

Excellent Integrated System Limited

Stocking Distributor

Click to view price, real time Inventory, Delivery & Lifecycle Information:

[Panduit](#)
[P18-10SLF-C](#)

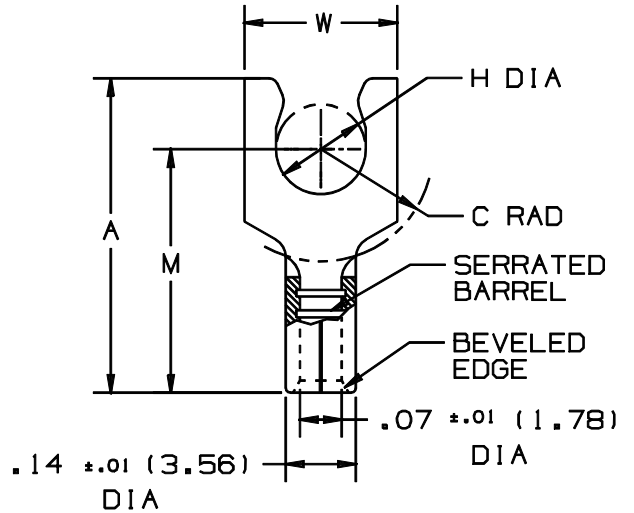
For any questions, you can email us directly:
sales@integrated-circuit.com

THIS COPY IS PROVIDED ON A RESTRICTED BASIS AND IS NOT TO BE USED IN ANY WAY DETRIMENTAL TO THE INTERESTS OF PANDUIT CORP.

PANDUIT PART NUMBER	STUD SIZE	DIMENSIONS in.				
		A $\pm .02$	W $\pm .01$	C $\pm .02$	M $\pm .02$	H $\pm .01$
P18-5SLF	#5	.51 (12.95)	.25 (6.35)	.22 (5.59)	.39 (9.91)	.12 (3.05)
P18-6SLF	#6	.51 (12.95)	.27 (6.86)	.22 (5.59)	.39 (9.91)	.14 (3.56)
P18-8SLF	#8	.56 (14.22)	.29 (7.37)	.25 (6.35)	.44 (11.18)	.16 (4.06)
P18-10SLF	#10	.57 (14.48)	.33 (8.38)	.25 (6.35)	.44 (11.18)	.19 (4.83)

NOTES:

- UL LISTED AND CSA CERTIFIED FOR:
 - #22-18 AWG SOLID OR STRANDED COPPER WIRE
 - 302° F (150° C) MAX. TEMP. RATING
- MATERIAL:
 - STAMPING - .03" (.76) THK COPPER, TIN PLATED
- PACKAGE QTY: STD. PKG. - C = 100
BULK PKG. - M = 1000
- DIMENSIONS IN BRACKETS ARE IN MILLIMETERS
- INSTALLATION TOOLS:
 - UL LISTED AND CSA CERTIFIED: CT-100, CT-200, CT-570, CT-1570
 - PANDUIT APPROVED: CT-160, CT-260
- WIRE STRIP LENGTH: $9/32'' \pm 1/32''$



LISTED
587H
E52184



CERTIFIED
LR31212

A41242_03

03	1/01	KMD		CAD FILE SPEC. WAS N41242AA_PCD_02						 TINLEY PARK, ILLINOIS #22-18 BARREL NON-INSULATED SHORT LOCKING FORK	
02	2/96	ED		REV.S TO DIMEN.S, TABLE, & NOTES/ FILESPEC WAS: A41242A	04054						
01	7/88	DW		REDRAWN WITH REVISIONS		JRB					
REV	DATE	BY	CHK	DESCRIPTION	ECN #	CUST	PM	DRAWN BY	CHK'D	SCALE	DWGING NO.
								DAW	CKH	NONE	A41242