

## Excellent Integrated System Limited

Stocking Distributor

Click to view price, real time Inventory, Delivery & Lifecycle Information:

[Molex Connector Corporation](#)  
[1700010102](#)

For any questions, you can email us directly:

[sales@integrated-circuit.com](mailto:sales@integrated-circuit.com)

# Mega-Fit™ Power Connectors

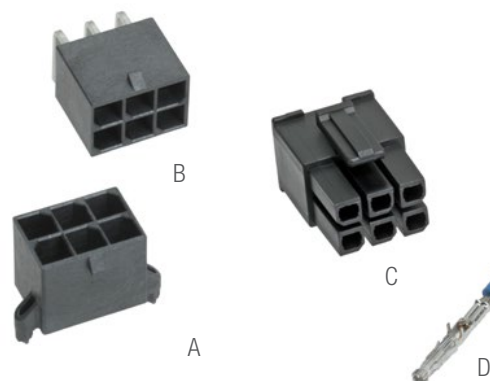
## 5.70mm Pitch

**molex**®

**Delivering cutting-edge current density at 23.0A per circuit through a split-box terminal design, Mega-Fit Power Connectors incorporate the option for Tin-plated contacts to enhance design flexibility while providing significant cost savings**

### Features and Benefits

Power-dense design with high-current terminals, tight pitch and row spacing	Provides more power per linear and square millimeter than other mid-range power products in the industry
Terminal interface with six independent points of contact (split-box terminal design)	Offers redundant, secondary current paths for long-term performance and reliability
Tin-plated contacts now available	Enhances design flexibility. Provides significant cost savings
Extended barrel conductor crimp	Provides extremely strong terminal-to-wire retention for long-term reliability
Sacrificial contacts	Allows system to be "hot plugged" at 48V/23.0A up to 30 cycles
Fully isolated header pins and receptacle terminals	Protects against potential damage during handling and mating
Positive locking housing	Ensures secure retention when receptacle and header are mated. Delivers an audible click to provide feedback that connector is fully mated



**Mega-Fit Power Connector Family**  
A. Vertical Header (Series 172065, 76829)  
B. Right-Angle Header (Series 172064, 76825)  
C. Receptacle (Series 171692, 170001)  
D. Female Crimp Terminal (Series 172063, 76823)

### Applications

#### Consumer / Home Appliance

Washers and Dryers  
Heaters and Air Conditioners

#### Networking and Telecommunication

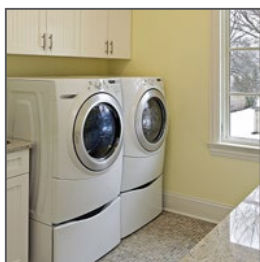
Hubs and Servers  
Power Supplies and Distribution

#### Industrial

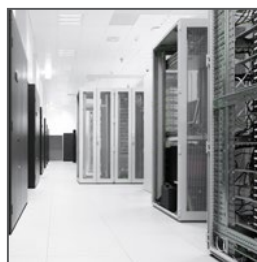
Machinery and Heavy Equipment  
Lighting and Automation

#### Commercial Vehicle

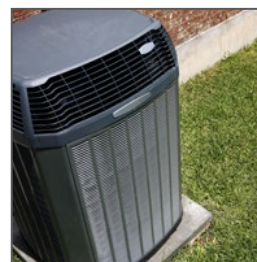
Unsealed Electronic Control Modules  
Power Converters



Washers and Dryers



Servers



Heaters and Air Conditioners

# Mega-Fit™ Power Connectors

## 5.70mm Pitch

**molex®**

### Specifications

#### REFERENCE INFORMATION

UL File No.: E29179  
CSA File No.: LR19980  
IEC: 1400024  
RoHS: Yes  
Halogen Free: Headers only  
Glow Wire Compliant: Yes, with 170001 series receptacle, VDE approved

#### MECHANICAL

Contact Retention to Housing: 30N  
Mating Force (max.): 5.6N per circuit (Gold), 6.8N (Tin)  
Unmating Force (max.): 5.6N per circuit (Gold), 6.5N (Tin)  
Durability (max.): 200 mating cycles (Gold), 25 cycles (Tin)  
Wire Pull-Out Force (min.): 12 AWG / 4.0mm<sup>2</sup>: 220N

#### ELECTRICAL

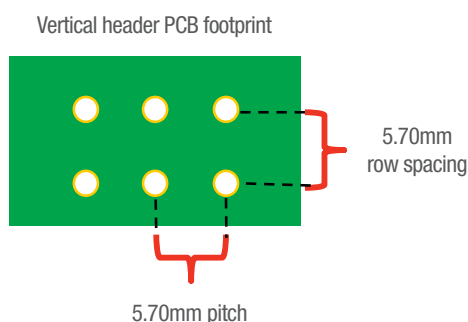
Voltage (max.): 600V  
Current (max.): 23.0A  
Contact Resistance (max. change): 6 milliohms  
Current Interrupt Rating: 48V AC/DC, 23.0A max.  
up to 30 mate and un-mate cycles

#### PHYSICAL

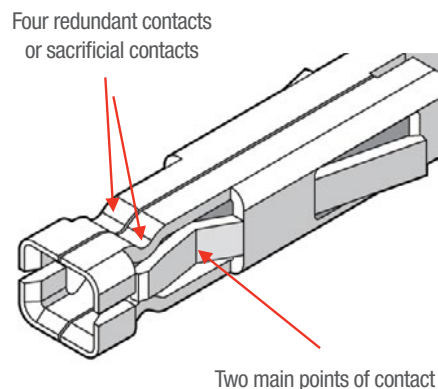
Material: LCP  
Header: UL 94 V-0, Glow-Wire and Low-Halogen  
Contact: High-Conductivity Copper  
Plating:  
Contact Area —  
Gold (Au) 30u" and 15u" options or Tin (Sn)  
Solder Tail Area — Tin (Sn)  
Underplating — Nickel (Ni)  
PCB Thickness: 1.60 and 2.40mm (.062 and .093")  
Operating Temperature (max.):  
Gold: -40 to +120°C  
Tin: -40 to +105°C

### ADDITIONAL PRODUCT FEATURES

#### THE MOST POWER-DENSE MID-RANGE PRODUCT — 23.0A PER CONTACT



#### SIX INDEPENDENT POINTS OF CONTACT



### Ordering Information

Series No.	Component	Orientation	Plating	Flammability Rating
<a href="#">171692</a>	Receptacles	Straight	---	UL 94 V-0
<a href="#">170001</a>				Glow-Wire
<a href="#">172064</a>	Headers	Right-Angle	Gold	UL 94 V-0 and Glow-Wire
<a href="#">76825</a>			Tin	
<a href="#">172065</a>		Vertical	Gold	
<a href="#">76829</a>			Tin	
		Wire Size - AWG	Wire Size - Metric	Base Material
<a href="#">172063</a>	Crimp Terminals	12, 14, or 16	1.50, 2.50, or 4.00mm²	Copper Alloy
<a href="#">76823</a>				

[www.molex.com/link/megafit.html](http://www.molex.com/link/megafit.html)