



Excellent Integrated System Limited

Stocking Distributor

Click to view price, real time Inventory, Delivery & Lifecycle Information:

[Visual Communications Company, LLC](#)

[LSV_020_CTP](#)

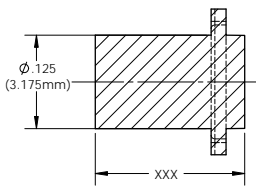
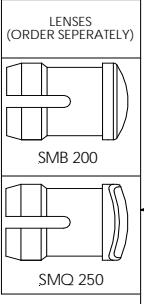
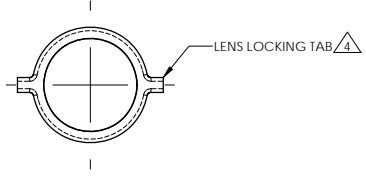
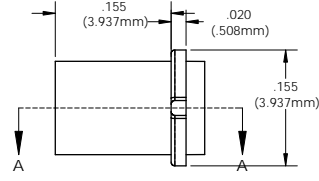
For any questions, you can email us directly:

sales@integrated-circuit.com

NOTES:

1. DESIGN: Lens mounts the Litepipe securely to display panel providing 180° viewing angle
2. MOUNTING: Panel mounting hole .171 (4.3mm) on 1/4" centers
3. PANEL THICKNESS: For SMB 200 & SMO 250: 1/32" to 1/8"
4. LENS LOCK: Insert Litepipe into lens aligning the tabs with the lens slot
5. Standoff used to adjust the height of a standard LED above the PCB and maintain a maximum .050" clearance between the Litepipe and LED.
6. Length is from front of panel to LED
7. Custom lengths available upon request (Minimum order quantity may apply)
8. U.S. & Foreign Pat. Issued & Pend.

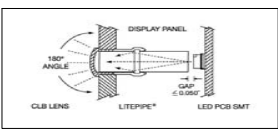
REVISIONS				
ECN #	REV	DESCRIPTION	DATE	INITIALS
	N/A	INITIAL RELEASE	4/4/96	JS
	001	REVISED PER ECR111009A201	4/23/10	KH



ORDERING CODE: **LSV XXX CTP**

LENGTH CODE		COLOR	
020	= .200"	CTP	CLEAR

040	.400
060	.600
080	.800
100	1.000
120	1.200



<small>UNLESS OTHERWISE SPECIFIED DIMENSIONS ARE IN INCHES</small> ANGLES: 1° DECIMALS X .001 FINISH: XXX .015 XXX .005 	MATERIAL ACRYLIC (OPTICAL GRADE) U.L. 94-HB	VISUAL COMMUNICATIONS COMPANY, INC. 190 Bostwick Boulevard, Suite101 San Marcos, CA 92069 USA Phone (760) 950-1300 Fax (760) 950-1301 email vccsales@vcc.com
	FINISH SEE NOTES	TITLE: 3MM ROUND LITEPIPE
APPROVAL DRAWN: KHoward CHECKED: DPZ	DATE 4/23/10 5/4/10	SIZE B
DO NOT SCALE DRAWING	DWG. NO. LSV XXX CTP	REV 001
	SCALE: 8:1	SHEET 1 OF 1

CUSTOM LENGTHS AVAILABLE UPON REQUEST (SEE NOTE 7)