



**Distributor of Molex Connector Corporation: Excellent Integrated System Limited**  
Datasheet of 0475901001 - Connector Receptacle USB micro AB 5 Position Surface Mount,  
Right Angle, Horizontal

Contact us: [sales@integrated-circuit.com](mailto:sales@integrated-circuit.com) Website: [www.integrated-circuit.com](http://www.integrated-circuit.com)

---

## **Excellent Integrated System Limited**

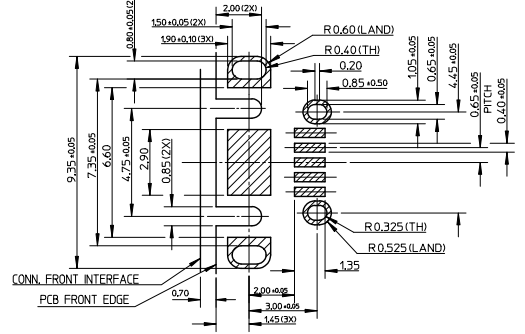
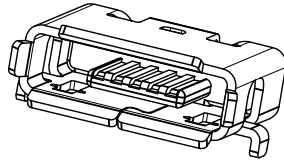
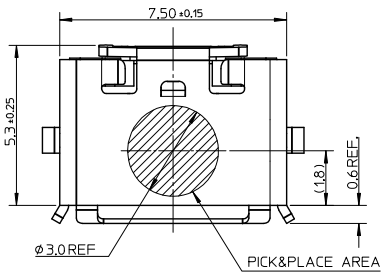
Stocking Distributor

Click to view price, real time Inventory, Delivery & Lifecycle Information:

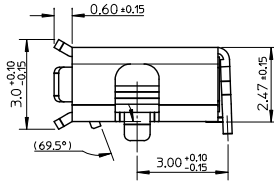
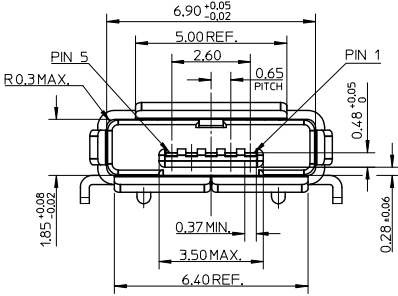
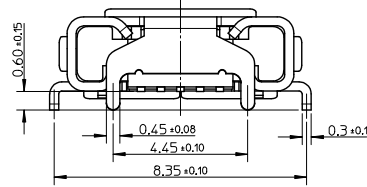
[Molex Connector Corporation](#)  
[0475901001](#)

For any questions, you can email us directly:  
[sales@integrated-circuit.com](mailto:sales@integrated-circuit.com)

Contact us: sales@integrated-circuit.com Website: www.integrated-circuit.com

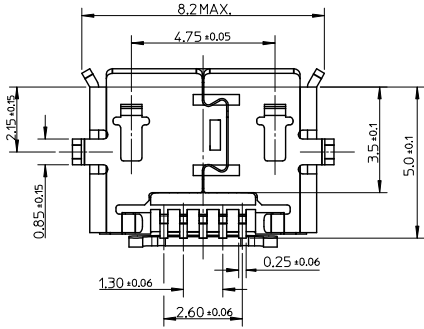


RECOMMENDED P.C.B. PATTERN LAYOUT



NOTE :

- MATERIAL :**  
HOUSING : LCP, GRAY, UL94V-0  
TERMINAL : COPPER ALLOY THICKNESS = 0.15 MM  
SHIELD CASE : STAINLESS STEEL THICKNESS = 0.30 MM
- PLATING :**  
TERMINAL: CONTACT AREA : GOLD FLASH (0.11 MICRON MIN.) OVER MINIMUM 0.75 MICRON Pd/Ni.  
SOLDER TAIL AREA : GOLD FLASH (0.05 MICRON MIN.).  
UNDER PLATING : NICKEL 2.0 MICROMN MINIMUM.  
SHIELD : MATTE TIN 1.27 MICRON MINIMUM.  
UNDER PLATING : NICKEL 1.27 MICRON MINIMUM.
- TAIL COPLANARITY 0.08 MM MAXIMUM.**
- COMPLIANT TO RoHS DIRECTIVE 2002/95/EC AND ELV IDRECTIVE 2000/53/EC.**



NEW RELEASE EC. NO. SH2011-0342 DRAWN BY XJSONG CHKD: APPR: RZHANG REV: A	DESCRIPTION 2011/09/05	QUALITY SYMBOLS		GENERAL TOLERANCES (UNLESS SPECIFIED)		DIMENSION STYLE MM ONLY		SCALE 1:1	DESIGN UNITS METRIC	THIRD ANGLE PROJECTION	
		4 PLACES ± --- ± ---	3 PLACES ± --- ± ---	2 PLACES ± 0.15 ± ---	1 PLACE ± 0.25 ± ---	mm	INCH	DRAWN BY XJSONG	DATE 2011/05/18	TITLE MICRO USB AB REC. TOP MOUNT ASS'Y	
		DRAFT WHERE APPLICABLE MUST REMAIN WITHIN DIMENSIONS		ANGULAR ± 3°		APPROVED BY RZHANG		DATE 2011/09/05		MATERIAL NO. 47590-1001	DOCUMENT NO. SD-47590-101
		SIZE A3		THIS DRAWING CONTAINS INFORMATION THAT IS PROPRIETARY TO MOLEX INCORPORATED AND SHOULD NOT BE USED WITHOUT WRITTEN PERMISSION							