



Distributor of Molex Connector Corporation: Excellent Integrated System Limited
Datasheet of 0709291003 - D-Sub Connector Plug, Male Pins 60 Position Panel Mount,
Through Hole Solder

Contact us: sales@integrated-circuit.com Website: www.integrated-circuit.com

Excellent Integrated System Limited

Stocking Distributor

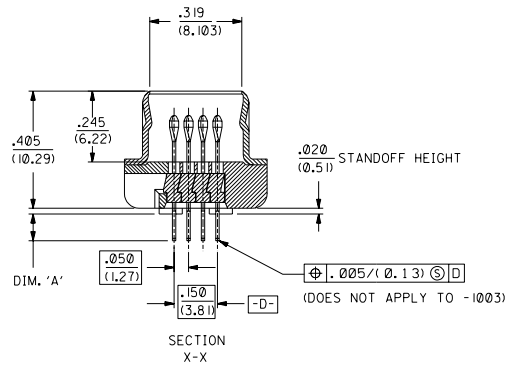
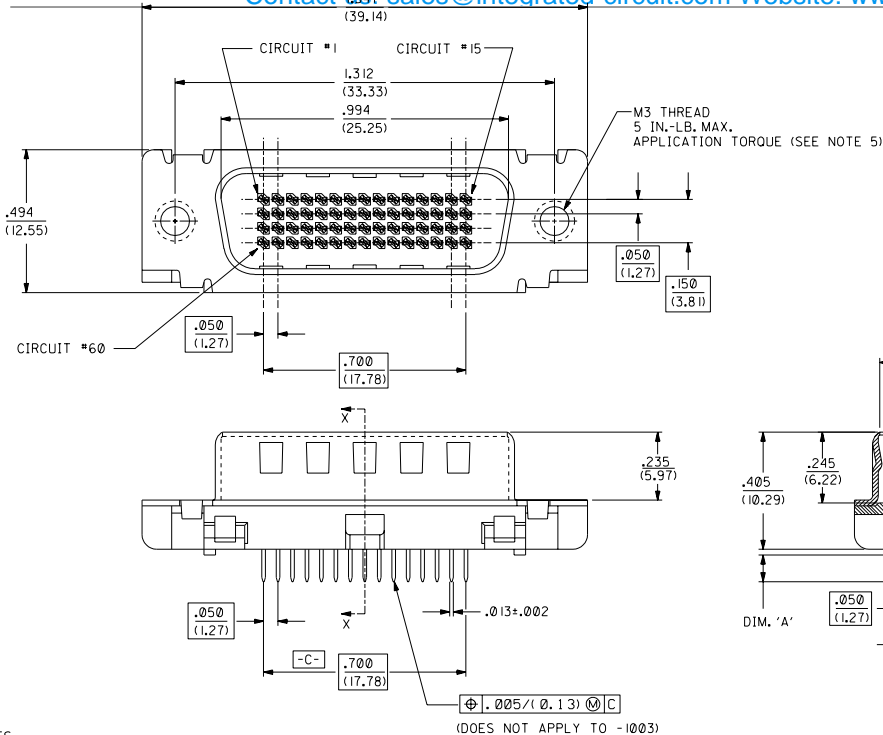
Click to view price, real time Inventory, Delivery & Lifecycle Information:

[Molex Connector Corporation](#)
[0709291003](#)

For any questions, you can email us directly:
sales@integrated-circuit.com

Contact us: sales@integrated-circuit.com Website: www.integrated-circuit.com

ENGINEERING NUMBER	ORDERING NUMBER	DIM. 'A'	PACKAGING SPEC.
A-70929-1001	15-92-2251	.092±.012 (2.34±0.30)	PK-70873-0226
A-70929-1003	70929-1003	.570±.012 (14.48±0.30)	PK-70873-640



- NOTES:
- MATERIALS:
 - HOUSING: GLASS FILLED LCP (LIQUID CRYSTAL POLYMER), UL 94V-0, COLOR: BLACK.
 - MOLDED STICK: GLASS FILLED LCP (LIQUID CRYSTAL POLYMER), UL 94V-0, COLOR: BLACK.
 - MALE TERMINAL: PHOSPHOR BRONZE
 - OUTER SHELL: DEEP DRAWN STEEL.
 - PLATING:
 - TERMINAL: .000030/(0.000762) MINIMUM GOLD IN SELECTIVE AREA; .000100/(0.00254) MINIMUM TIN IN SELECTIVE AREA; OVER NICKEL UNDERPLATE OVERALL.
 - OUTER SHELL: .000100/(0.00254) MINIMUM BRIGHT NICKEL OVER COPPER FLASH (OPTIONAL).
 - CONFORMS TO PRODUCT SPECIFICATION PS-70928.
 - PARTS TO BE PACKAGED PER CHART.
 - THREAD GAUGE MAY REQUIRE UP TO 1 IN.-LB. OF TORQUE DURING GAUGING PROCESS.

NOTE FOR LEAD FREE CONVERSION:
 THE PRIMARY SHIPPING CARTON WILL BE LABELED *COMPLIANT TO ROHS DIRECTIVE 2002/95/EC AND ELV ANNEX II OF DIRECTIVE 2000/53/EC*. CARTONS WITHOUT THIS LABEL MAY CONTAIN PRODUCT WITH LEAD.

LTR.		REVISIONS		LTR.		REVISIONS	

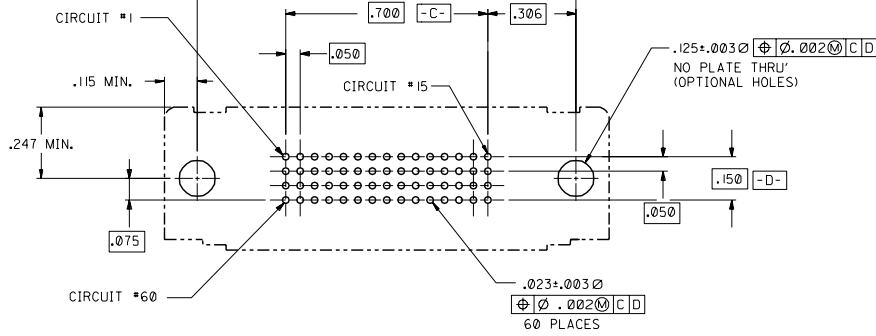
DIMENSIONS SHOWN (METRIC) INCH UNLESS OTHERWISE SPECIFIED TOLERANCES ARE AS SHOWN		INCH		METRIC	
1 PLACE	±	---	---	---	---
2 PLACE	±	---	---	---	---
3 PLACE	±	---	---	---	---

DRAWING APPLICABLE MUST REMAIN WITHIN DIMENSIONS		DRAWING		SCALE	
DRG:	MOS	CHK'D:	CAB	SCALE:	4:1
APP'D:	CAB	BY:			

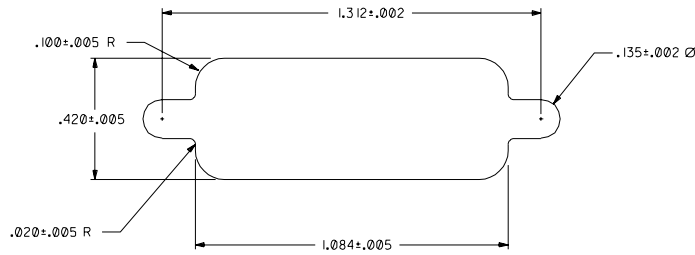
TITLE		SHEET NO.		DATE	
.050" PITCH LFH 60 CKT VERTICAL D-SUB SALES ASSY MALE		1 OF 2		01/21/92	

MFG, SKL, REV.		FILE NAME		TYP. TITL.	
		S78929X2		CD C	

Contact us: sales@integrated-circuit.com Website: www.integrated-circuit.com



RECOMMENDED P.C.B. LAYOUT
COMPONENT SIDE



RECOMMENDED PANEL CUT-OUT

				DIMENSIONS SHOWN (METRIC) INCH		UNLESS OTHERWISE SPECIFIED TOLERANCES: ANGULAR ±1/2°		MFG. SH. REV.	
				INCH		METRIC		TITLE	
		D		3 PLACE ±		---		.050" PITCH LFH 60 CKT	
				2 PLACE ±		.3		VERTICAL D-SUB SALES ASSY	
				1 PLACE ---		.3		MALE	
		C.I		DRAWN BY: MOS		CHK'D BY: CAB		MOLEX INCORPORATED	
				APP'D: CAB		SCALE: 4:1		PART NO. 15-92-2251	
								SHEET NO. 2	
								DATE 01/21/92	
								SDA-70929-1001	
								THIS DRAWING CONTAINS INFORMATION THAT IS PROPRIETARY TO MOLEX INC. AND SHOULD NOT BE USED WITHOUT WRITTEN PERMISSION.	
								TOL. STYLE CD	