

Excellent Integrated System Limited

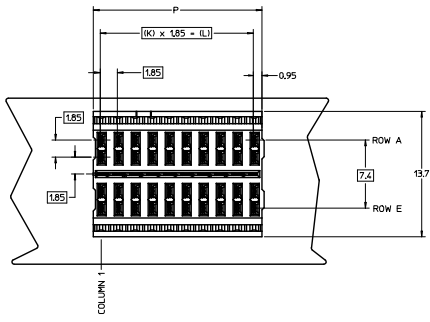
Stocking Distributor

Click to view price, real time Inventory, Delivery & Lifecycle Information:

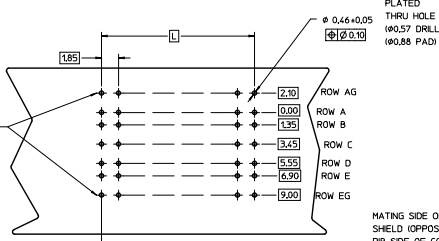
[Molex Connector Corporation](#)
[0758320204](#)

For any questions, you can email us directly:

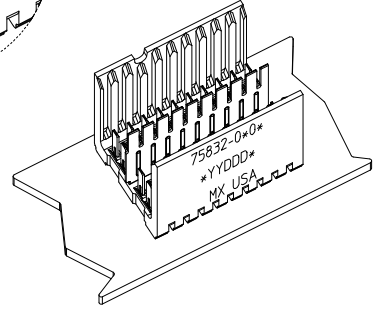
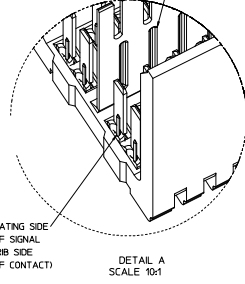
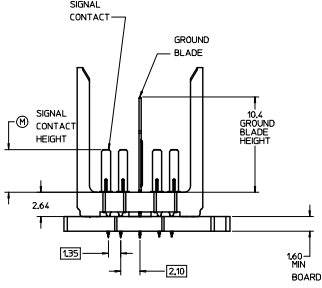
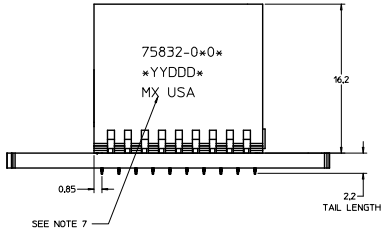
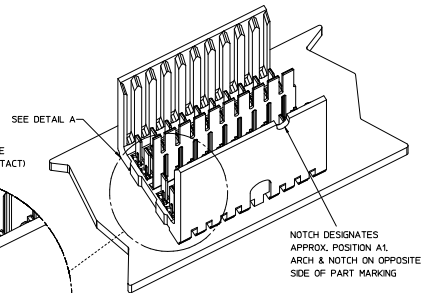
sales@integrated-circuit.com



ROWS AG & EG RECOMMENDED FOR ALL APPLICATIONS. THESE ROWS SHOULD BE CONNECTED TO GROUND.



BACKPLANE HOLE PATTERN (COMPONENT SIDE 10-POSITION SHOWN)



LEAD-FREE PLATING ON SIGNALS & GROUNDS.

- NOTES:
1. MATERIAL: HOUSING - LIQUID CRYSTAL POLYMER (LCP) GLASS-FILLED, UL 94V-0, COLOR - GRAY, SIGNAL CONTACT AND GROUND BLADE - HIGH PERFORMANCE COPPER ALLOY.
 2. FINISHES: SELECTIVE GOLD (Au) ON CONTACT AREA, SELECTIVE MATTE TIN (Sn) ON PCB TAILS, NICKEL (Ni) OVERALL.
 3. THIS PART CONFORMS TO MOLEX PRODUCT SPECIFICATION PS-75221-999.
 4. FOR MIXED CONTACT MATING LENGTHS CONSULT MOLEX FOR AVAILABILITY, CONTACT PAIRS MUST BE THE SAME LENGTH.
 5. FOR SPECIFIC PART NUMBER AND MATING INFORMATION PLEASE REFER TO CHART.
 6. PACKAGE PER PK-70873-5058.
 7. EITHER MARK PART NUMBER AND DATE CODE APPROXIMATELY WHERE SHOWN OR PLACE A LABEL ON THE TUBE.
 8. THESE PARTS CONFORM TO MOLEX COSMETIC SPECIFICATION PS-45499-002 CLASS B.
 9. MAPS (MOLEX ADVANCED PLATING SYSTEM).

COLUMNS	75832-**0*	PIN LENGTH (MM)	GOLD (Au) THICKNESS (micrometers)
01 = 10 COL		0-3.55 mm	0.25 (MAPS)
02 = 25 COL		1-4.55 mm	
05 = 5 COL		2-5.55 mm	
		3-3.55 mm	0.76
		4-4.55 mm	
		5-5.55 mm	
		7-3.55 mm	1.27
		8-4.55 mm	
		9-5.55 mm	

ASSY PART NO.	K	L	P	TOTAL NO. OF DIFFERENTIAL PAIRS
75832-050*	4	7.40	9.10	10
75832-010*	9	16.65	18.35	20
75832-020*	24	44.40	46.10	50

QUALITY SYMBOLS ∇=0 ∇=0 ∇=0	GENERAL TOLERANCES (UNLESS SPECIFIED) 4 PLACES ± --- ± --- 3 PLACES ± --- ± --- 2 PLACES ± 0.13 ± --- 1 PLACE ± 0.25 ± --- 0 PLACE ± ±	DIMENSION STYLE MM ONLY	SCALE 5:1 DESIGN UNITS METRIC	THIRD ANGLE PROJECTION	
	DRAWN BY THOMAS 2006/10/13 CHECKED BY J.BINGHAM 2006/10/16 APPROVED BY KMULVEY 2006/10/17	MATERIAL NO. SEE TABLE	DOCUMENT NO. SD-75832-010	SHEET NO. 1 OF 1	TITLE: GBX 2-PAIR OPEN END BACKPLANE ASSEMBLY LEAD-FREE SALES DRAWING
	DRAFT WHERE APPLICABLE MUST REMAIN WITHIN DIMENSIONS	SEE TABLE	THIS DRAWING CONTAINS INFORMATION THAT IS PROPRIETARY TO MOLEX INCORPORATED AND SHOULD NOT BE USED WITHOUT WRITTEN PERMISSION		
	ADD MAPS EC NO. IEP7013-5239 20/10/08 DRWSVANG1 20/10/08 CHKDMULE 20/10/08 APPRKMULVEY 20/10/08				