

Excellent Integrated System Limited

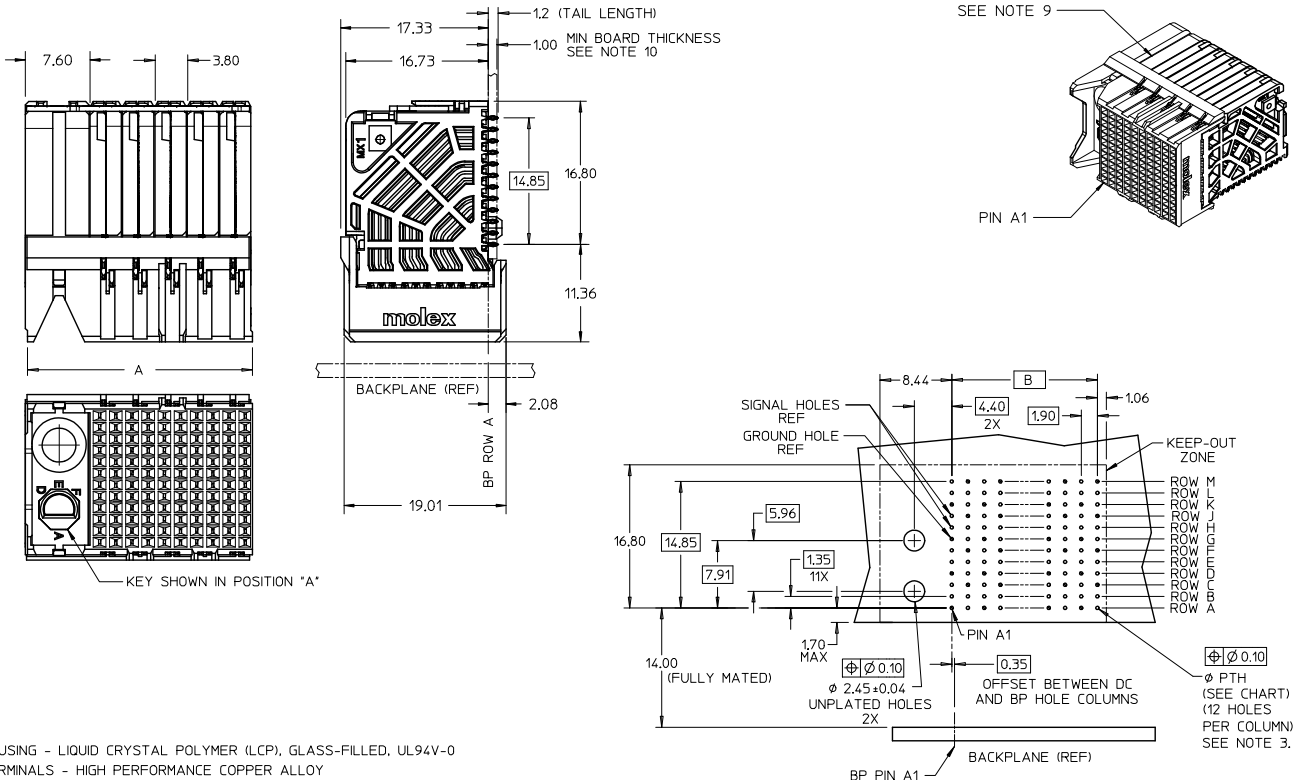
Stocking Distributor

Click to view price, real time Inventory, Delivery & Lifecycle Information:

[Molex Connector Corporation](#)
[0761603036](#)

For any questions, you can email us directly:

sales@integrated-circuit.com



- NOTES:
1. MATERIALS: HOUSING - LIQUID CRYSTAL POLYMER (LCP), GLASS-FILLED, UL94V-0
TERMINALS - HIGH PERFORMANCE COPPER ALLOY
 2. FINISH: 30μN MIN SELECTIVE GOLD IN CONTACT AREA, SELECTIVE TIN ON PCB TAILS, NICKEL OVERALL.
 3. REFER TO MOLEX PRODUCT SPEC PS-76060-999 FOR PERFORMANCE SPECIFICATIONS AND ADDITIONAL PCB INFORMATION.
 4. EACH SIGNAL WAFER CONTAINS 2 COLUMNS OF TERMINALS.
 5. PRODUCT IS PACKAGED PER PK-70873-610.
 6. THIS PART CONFORMS TO CLASS B REQUIREMENTS OF COSMETIC SPEC PS-45499-002.
 7. REFER TO MOLEX SALES DRAWING SD-76155-002 FOR THE MATING HEADERS AND SD-76500-004 FOR THE MATING RAM CONNECTORS.
 8. REFER TO MOLEX PCB ROUTING GUIDE AS-76060-990 FOR ANTIPAD AND ROUTING RECOMMENDATIONS.
 9. PART NUMBER 76160-3120 SHOWN ON DRAWING. KEYING FEATURES WILL CHANGE WITH COLUMN SIZE.
 10. MINIMUM BOARD THICKNESS IS 1.00 mm FOR COMPLIANT PIN FUNCTIONALITY.
 11. WHEN USING MOLEX SUPPLIED #2-32 SCREW 73726-0000 (9.50mm +0.38 THREADABLE SCREW LENGTH), THE MAXIMUM BOARD THICKNESS IS 4.4mm.

| | | | | | | | | |
|---|-----------------------------------|---------------------------------------|-----|----------------------------|-----------------------|--------------------|---|------------------------|
| STANDARDIZATION EC NO: UCP2019-5285 2019/06/12 DRAWN: JOPSKY CHKD: TEL0 APPR: TEL0 2013/07/18 | QUALITY SYMBOLS =0 =0 =0 | GENERAL TOLERANCES (UNLESS SPECIFIED) | | DIMENSION STYLE MM ONLY | | SCALE 3:1 | DESIGN UNITS METRIC | THIRD ANGLE PROJECTION |
| | | | mm | INCH | DRAWN BY JLAURX | DATE 2008/03/03 | TITLE IMPACT 100 OIHM DC 4 PAIR SIGNAL MODULE GUIDE LEFT SALES DWG | |
| H1 | REV | 4 PLACES ± | --- | --- | CHECKED BY TELO | DATE 2008/03/03 | molex | SHEET NO. 1 OF 2 |
| | | 3 PLACES ± | --- | --- | APPROVED BY JLAURX | DATE 2010/09/15 | | |
| DRAFT WHERE APPLICABLE MUST REMAIN WITHIN DIMENSIONS | | ANGULAR ±1/2° | | SEE CHART | | | | |
| THIS DRAWING CONTAINS INFORMATION THAT IS PROPRIETARY TO MOLEX INCORPORATED AND SHOULD NOT BE USED WITHOUT WRITTEN PERMISSION | | | | | | | | |

| MATERIAL NUMBER | # OF COLUMNS | # OF DIFF PAIR | DIM 'A' MAX | DIM 'B' | PTH ϕ |
|-----------------|--------------|----------------|-------------|---------|---------------|
| 76160-***06 | 6 | 24 | 19.00 | 9.50 | 0.46 +0.05 |
| 76160-***08 | 8 | 32 | 22.80 | 13.30 | |
| 76160-***10 | 10 | 40 | 26.60 | 17.10 | |
| 76160-***16 | 16 | 64 | 38.00 | 28.50 | 0.39 +0.05 |
| 76160-***36 | 6 | 24 | 19.00 | 9.50 | |
| 76160-***38 | 8 | 32 | 22.80 | 13.30 | |
| 76160-***20 | 10 | 40 | 26.60 | 17.10 | |
| 76160-***26 | 16 | 64 | 38.00 | 28.50 | |

76160-***

MODULE AND TAIL PLATING TYPE
3 = LEFT GUIDED LEAD-FREE

POLARIZATION KEY ORIENTATION

- 0 = NO KEY
- 1 = A 5 = E
- 2 = B 6 = F
- 3 = C 7 = G
- 4 = D 8 = H

- # OF COLUMNS
- 06 = 6 COL 0.46 PTH
- 08 = 8 COL 0.46 PTH
- 10 = 10 COL 0.46 PTH
- 16 = 16 COL 0.46 PTH
- 20 = 10 COL 0.39 PTH
- 26 = 16 COL 0.39 PTH
- 38 = 8 COL 0.39 PTH
- 36 = 6 COL 0.39 PTH

| | | | | | | |
|--|--|---------------------------------------|-----------------|--|--------------|------------------------|
| SEE SHEET 1 EC NO: UCP2015-5285 DRAWN: JUPESKY 2013/06/12 CHKD: APPR: TELO 2013/07/18 REV | QUALITY SYMBOLS | GENERAL TOLERANCES (UNLESS SPECIFIED) | DIMENSION STYLE | SCALE | DESIGN UNITS | THIRD ANGLE PROJECTION |
| | ▽=0 | mm INCH | MM ONLY | 3:1 | METRIC | |
| | ▽=0 | 4 PLACES ± --- ± --- | DRAWN BY DATE | TITLE IMPACT 100 OIHM DC 4 PAIR SIGNAL MODULE GUIDE LEFT SALES DWG molex MATERIAL NO. SD-76160-002 DOCUMENT NO. SHEET NO. 2 OF 2 | | |
| | ▽=0 | 3 PLACES ± --- ± --- | CHECKED BY DATE | | | |
| ▽=0 | 2 PLACES ± 0.13 ± --- | TELO 2008/03/03 | | | | |
| ▽=0 | 1 PLACE ± 0.25 ± --- | APPROVED BY DATE | | | | |
| | 0 PLACE ± ± | JLAURX 2010/09/15 | | | | |
| | ANGULAR ± 1/2° | | | | | |
| | DRAFT WHERE APPLICABLE MUST REMAIN WITHIN DIMENSIONS | | SIZE C | | | |