

## Excellent Integrated System Limited

Stocking Distributor

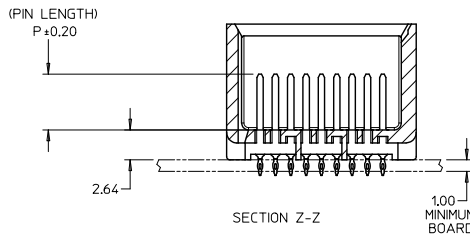
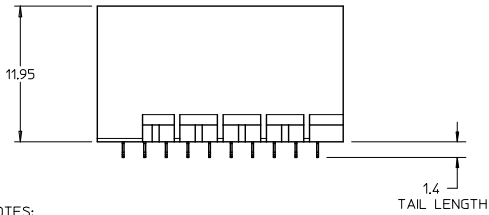
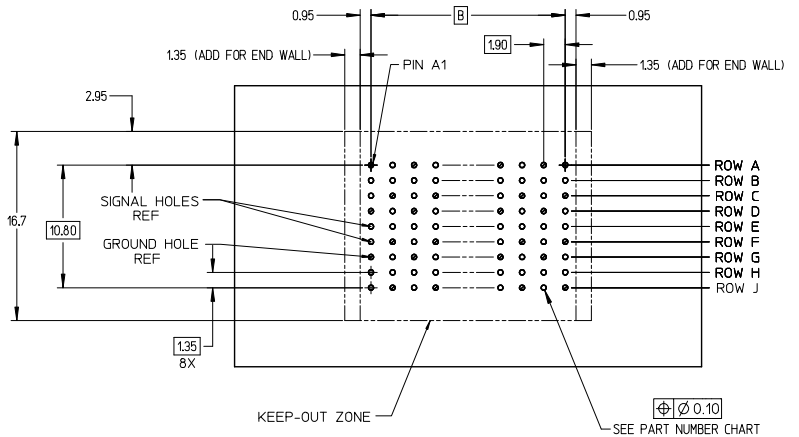
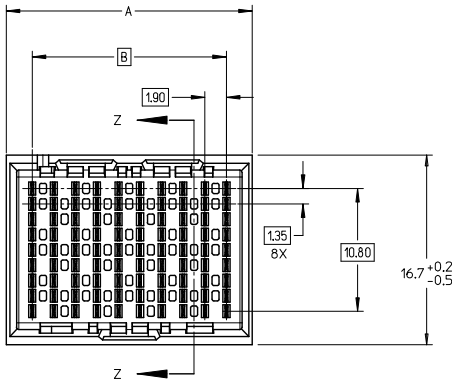
Click to view price, real time Inventory, Delivery & Lifecycle Information:

[Molex Connector Corporation](#)  
[0761651317](#)

For any questions, you can email us directly:

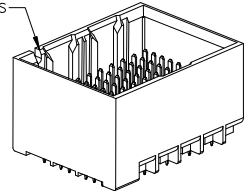
[sales@integrated-circuit.com](mailto:sales@integrated-circuit.com)

13 12 11 10 9 8 7 6 5 4 3 2 1



UNGUIDED BACKPLANE HOLE PATTERN (CONNECTOR SIDE) SEE NOTE 9

NOTCH DESIGNATES ROW A



NOTES:

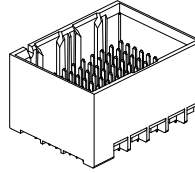
- MATERIALS: HOUSING - LIQUID CRYSTAL POLYMER (LCP)  
GLASS-FILLED, UL94V-0  
TERMINALS - HIGH PERFORMANCE COPPER ALLOY
- FINISH: 30μ MIN GOLD IN CONTACT AREA.  
SELECTIVE TIN ON PCB TAILS.  
NICKEL OVERALL.
- REFER TO MOLEX PRODUCT SPECIFICATION PS-76060-999 FOR PERFORMANCE SPECIFICATIONS AND ADDITIONAL PCB INFORMATION.
- THIS PART CONFORMS TO CLASS B REQUIREMENTS OF MOLEX COSMETIC SPEC PS-45499-002.
- PARTS PACKAGED PER PK-70873-7700.
- SEE SHEETS 2 & 3 FOR PART NUMBERS AND BOARD RELATIONSHIPS.
- MATES WITH IMPACT DC SERIES NO. 76170.
- REFER TO MOLEX PCB ROUTING GUIDE AS-76060-990 FOR ANTIPAD AND ROUTING RECOMMENDATIONS.
- \*THESE DIMENSIONS REPRESENT THE AREA NEEDED TO ACCOMMODATE CONNECTOR INSERTION AND REPAIR ON THE PC BOARD. THIS IS REFERRED TO AS THE "CONNECTOR KEEP OUT ZONE" AND DOES NOT REPRESENT THE ACTUAL PERIMETER OF THE CONNECTOR. WHEN LAYING OUT A PC BOARD FOR CONNECTORS STACKED TOGETHER, USE A 1.9mm PROGRESSION.\*

|  |                                      |  |  |                    |  |   |              |   |  |  |
|--|--------------------------------------|--|--|--------------------|--|---|--------------|---|--|--|
| CONVERT TO LEAD-FREE<br>EC NO: UCP2015-2078<br>DRAWN: IBARRA 2017/11/28<br>CHKD: BINGHAM 2017/12/18<br>APPR: MILLER 2017/12/31 | QUALITY SYMBOLS<br>∇=0<br>∇=0<br>∇=0 | GENERAL TOLERANCES (UNLESS SPECIFIED)                |  | DIMENSION STYLE    |  | SCALE   | DESIGN UNITS | THIRD ANGLE PROJECTION  |  |  |
|  |                                      |  |  | MM ONLY            |  | 4:1   | METRIC       |   |  |  |
|  |                                      | 4 PLACES ± --- ± ---                                 |  | DRAWN BY MSANDBERG |  | DATE 2007/06/18   |              | TITLE<br>IMPACT BP 3 PAIR UNGUIDED ASSEMBLY SALES DRAWING<br><b>molex</b> |  |  |
|  |                                      | 3 PLACES ± --- ± ---                                 |  | CHECKED BY JLAURX  |  | DATE 2007/06/18   |              |   |  |  |
| 2 PLACES ± 0.13 ± ---  |                                      | APPROVED BY JLAURX                                   |  | DATE 2010/10/15    |  | DOCUMENT NO.  |              | SHEET NO.   |  |  |
| 1 PLACE ± 0.25 ± ---   |                                      | ANGULAR ± 1/2°                                       |  | SEE TABLE          |  | SD-76165-001  |              | 1 OF 3  |  |  |
| 0 PLACE ± ±  |                                      | DRAFT WHERE APPLICABLE MUST REMAIN WITHIN DIMENSIONS |  | SIZE C             |  | THIS DRAWING CONTAINS INFORMATION THAT IS PROPRIETARY TO MOLEX INCORPORATED AND SHOULD NOT BE USED WITHOUT WRITTEN PERMISSION |              |   |  |  |

12 11 10 9 8 7 6 5 4 3 2 1

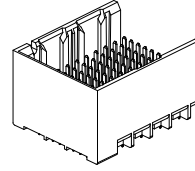
PART NUMBER TABLE

| MATERIAL NUMBER    | # OF COLUMNS | # OF DIFF PAIR | DIM 'A' | DIM 'B' | DUAL<br>END WALL<br>OPTION |
|--------------------|--------------|----------------|---------|---------|----------------------------|
| 76165- <b>*32*</b> | 6            | 18             | 14.1    | 9.50    |                            |
| 76165- <b>*82*</b> | 8            | 24             | 17.9    | 13.30   |                            |
| 76165- <b>*12*</b> | 10           | 30             | 21.7    | 17.10   |                            |
| 76165- <b>*62*</b> | 16           | 48             | 33.1    | 28.50   |                            |



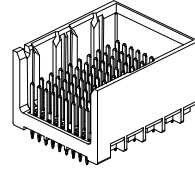
DUAL END  
WALL OPTION

| MATERIAL NUMBER    | # OF COLUMNS | # OF DIFF PAIR | DIM 'A' | DIM 'B' | LEFT<br>END WALL<br>OPTION |
|--------------------|--------------|----------------|---------|---------|----------------------------|
| 76165- <b>*31*</b> | 6            | 18             | 12.7    | 9.50    |                            |
| 76165- <b>*81*</b> | 8            | 24             | 16.5    | 13.30   |                            |
| 76165- <b>*11*</b> | 10           | 30             | 20.3    | 17.10   |                            |
| 76165- <b>*61*</b> | 16           | 48             | 31.7    | 28.50   |                            |



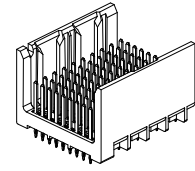
LEFT END  
WALL OPTION

| MATERIAL NUMBER    | # OF COLUMNS | # OF DIFF PAIR | DIM 'A' | DIM 'B' | RIGHT<br>END WALL<br>OPTION |
|--------------------|--------------|----------------|---------|---------|-----------------------------|
| 76165- <b>*33*</b> | 6            | 18             | 12.7    | 9.50    |                             |
| 76165- <b>*83*</b> | 8            | 24             | 16.5    | 13.30   |                             |
| 76165- <b>*13*</b> | 10           | 30             | 20.3    | 17.10   |                             |
| 76165- <b>*63*</b> | 16           | 48             | 31.7    | 28.50   |                             |



RIGHT END  
WALL OPTION

| MATERIAL NUMBER    | # OF COLUMNS | # OF DIFF PAIR | DIM 'A' | DIM 'B' | OPEN<br>WALL<br>OPTION |
|--------------------|--------------|----------------|---------|---------|------------------------|
| 76165- <b>*30*</b> | 6            | 18             | 11.3    | 9.50    |                        |
| 76165- <b>*80*</b> | 8            | 24             | 15.1    | 13.30   |                        |
| 76165- <b>*10*</b> | 10           | 30             | 18.9    | 17.10   |                        |
| 76165- <b>*60*</b> | 16           | 48             | 30.4    | 28.50   |                        |



OPEN  
WALL OPTION

PART NUMBER LOGIC

76165-\*\*\*\*

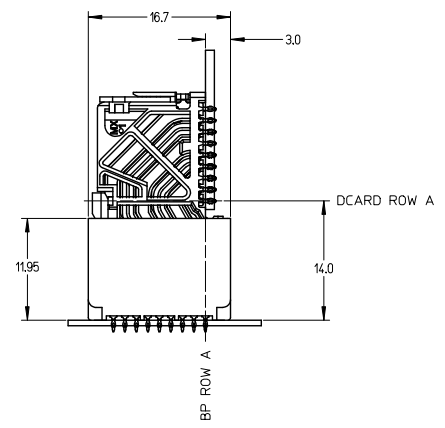
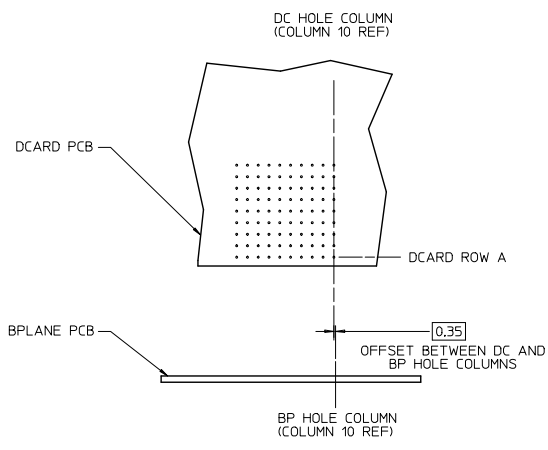
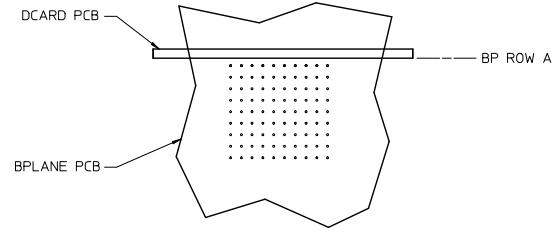
MODULE TYPE  
1 = UNGUIDED, TIN

- PIN LENGTH (P)
- 3 = 4.50 (SHORT COMPLIANT, 0.46±0.05 PTH)
  - 4 = 4.90 (SHORT COMPLIANT, 0.46±0.05 PTH)
  - 5 = 5.50 (SHORT COMPLIANT, 0.46±0.05 PTH)
  - 6 = 4.50 (MICRO COMPLIANT, 0.39±0.05 PTH)
  - 7 = 4.90 (MICRO COMPLIANT, 0.39±0.05 PTH)
  - 8 = 5.50 (MICRO COMPLIANT, 0.39±0.05 PTH)
- END WALL OPTIONS
- 0 = OPEN ENDS
  - 1 = LEFT END WALL
  - 2 = DUAL END WALL
  - 3 = RIGHT END WALL

- # OF COLUMNS
- 1 = 10 COL
  - 3 = 6 COL
  - 6 = 16 COL
  - 8 = 8 COL

|   |                                      |  |  |  |                           |                              |                     |
|---|--------------------------------------|--|--|--|---------------------------|------------------------------|---------------------|
| SEE SHEET 1<br>EC NO: UCP2013-2078<br>DRAWN BY: BARBA 2012/11/28<br>CHKCD: B. INGHAM 2012/12/18<br>APPR: S. MILLER 2012/12/31 | QUALITY SYMBOLS<br>∇=0<br>∇=0<br>∇=0 | GENERAL TOLERANCES (UNLESS SPECIFIED)  | DIMENSION STYLE<br>MM ONLY   | SCALE<br>2.5:1   | DESIGN UNITS<br>METRIC    | THIRD ANGLE PROJECTION       |                     |
|   |                                      | 4 PLACES ± --- ± ---<br>3 PLACES ± --- ± ---<br>2 PLACES ± 0.13 ± ---<br>1 PLACE ± 0.25 ± ---<br>0 PLACE ± ± | DRAWN BY DATE<br>MSANDBERG 2007/06/18<br>CHECKED BY DATE<br>JLAURX 2007/06/18<br>APPROVED BY DATE<br>JLAURX 2010/10/15 | TITLE<br>IMPACT BP 3 PAIR<br>UNGUIDED ASSEMBLY<br>SALES DRAWING  | MATERIAL NO.<br>SEE TABLE | DOCUMENT NO.<br>SD-76165-001 | SHEET NO.<br>2 OF 3 |
|   |                                      | DRAFT WHERE APPLICABLE<br>MUST REMAIN<br>WITHIN DIMENSIONS   | ANGLE ± 1/2°   | THIS DRAWING CONTAINS INFORMATION THAT IS PROPRIETARY TO MOLEX<br>INCORPORATED AND SHOULD NOT BE USED WITHOUT WRITTEN PERMISSION |                           |                              |                     |

IMPACT 3 PAIR  
BOARD RELATIONSHIPS



|   |                       |                                       |  |  |              |                        |
|---|-----------------------|---------------------------------------|--|--|--------------|------------------------|
| SEE SHEET 1<br>EC NO: UCP2015-2078<br>DRAWN BY: BARBARA 2012/11/28<br>CHECKED BY: B INGHAM 2012/12/18<br>APPROVED BY: S MILLER 2012/12/21 | QUALITY SYMBOLS       | GENERAL TOLERANCES (UNLESS SPECIFIED) | DIMENSION STYLE  | SCALE  | DESIGN UNITS | THIRD ANGLE PROJECTION |
|   | ▽=0                   | mm INCH                               | MM ONLY  | 3:1  | METRIC       |                        |
|   | ▽=0                   | 4 PLACES ± --- ± ---                  | DRAWN BY DATE  | TITLE  |              |                        |
|   | ▽=0                   | 3 PLACES ± --- ± ---                  | MSANDBERG 2007/06/18   | IMPACT BP 3 PAIR<br>UNGUIDED ASSEMBLY<br>SALES DRAWING |              |                        |
|   | 2 PLACES ± 0.13 ± --- | CHECKED BY DATE                       | molex  |  |              |                        |
|   | 1 PLACE ± 0.25 ± ---  | JLAURX 2007/06/18                     | SD-76165-001   |  |              |                        |
|   | 0 PLACE ± ±           | APPROVED BY DATE                      | SHEET NO. 3 OF 3   |  |              |                        |
|   |                       | JLAURX 2010/10/15                     | INCORPORATED AND SHOULD NOT BE USED WITHOUT WRITTEN PERMISSION |  |              |                        |
|   |                       |                                       | THIS DRAWING CONTAINS INFORMATION THAT IS PROPRIETARY TO MOLEX |  |              |                        |