

Excellent Integrated System Limited

Stocking Distributor

Click to view price, real time Inventory, Delivery & Lifecycle Information:

[Molex Connector Corporation](#)
[0764105804](#)

For any questions, you can email us directly:

sales@integrated-circuit.com

MATERIAL NUMBER	# OF COLUMNS	# OF DIFF PAIR	DN 'A' MAX	DN 'B'	PTH
76410-8**	8	24	22.80	13.30	0.46±0.05
76410-10**	10	30	26.60	17.10	0.46±0.05
76410-14**	14	42	34.20	24.70	0.46±0.05
76410-16**	16	48	38.00	28.50	0.46±0.05
76410-8**	8	24	22.80	13.30	0.39±0.05
76410-10**	10	30	26.60	17.10	0.39±0.05
76410-14**	14	42	34.20	24.70	0.39±0.05
76410-16**	16	48	38.00	28.50	0.39±0.05

76410-***

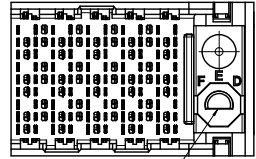
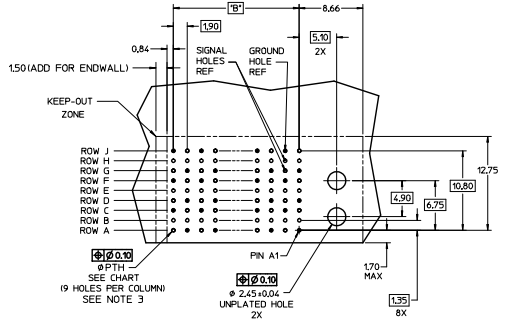
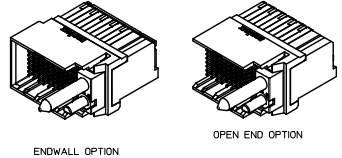
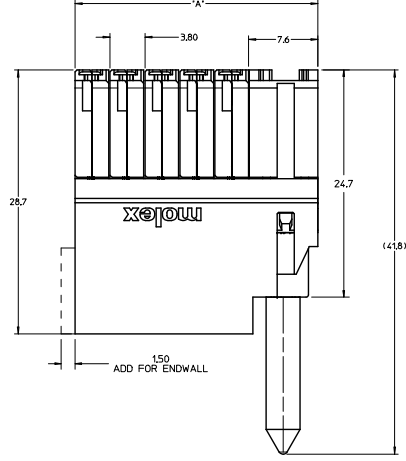
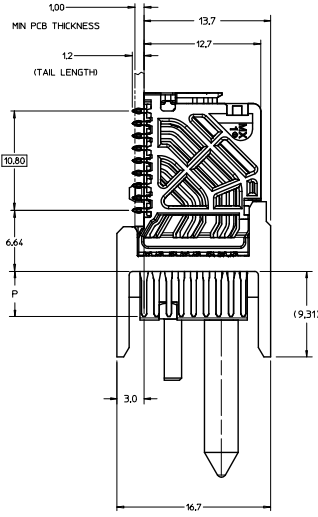
MODULE & TAIL PLATING TYPE
 5 - RIGHT GUIDED LEAD-FREE
 9 - RIGHT GUIDED LEAD-FREE W/ ENDWALL

OF COLUMNS
 1 = 10 COL
 2 = 14 COL
 3 = 16 COL
 4 = 8 COL

POLARIZATION KEY ORIENTATION
 0 = NO KEY
 1 = A 5 = E
 2 = B 6 = F
 3 = C 7 = G
 4 = D 8 = H

PIN LENGTH (P)
 4 = 4.90 (0.46 PTH)
 5 = 5.50 (0.46 PTH)
 7 = 4.90 (0.39 PTH)
 8 = 5.50 (0.39 PTH)

- NOTES:
- MATERIALS: HOUSING - LIQUID CRYSTAL POLYMER (LCP), GLASS-FILLED, UL94V-0
 - TERMINALS - HIGH PERFORMANCE COPPER ALLOY
 - FINISH: 30µm SELECTIVE GOLD IN CONTACT AREA, SELECTIVE TIN ON PCB TAILS, NICKEL OVERALL.
 - REFER TO MOLEX PRODUCT SPECIFICATION PS-76060-999 FOR PERFORMANCE SPECIFICATIONS AND ADDITIONAL PCB INFORMATION.
 - EACH SIGNAL WAFER CONTAINS 2 COLUMNS OF TERMINALS.
 - PRODUCT IS PACKAGED PER PK-70973-762.
 - THIS PART CONFORMS TO CLASS B REQUIREMENTS OF COSMETIC SPEC PS-15499-002.
 - REFER TO MOLEX SALES DRAWING SD-7610-002 FOR THE MATING RECEPTABLES.
 - REFER TO MOLEX PCB ROUTING GUIDE AS-76060-990 FOR ANTIAD AND ROUTING RECOMMENDATIONS.
 - WHEN USING MOLEX SUPPLIED #2-32 SCREW 73726-0005 (7.62 ±0.38/-0.76 mm THREADABLE SCREW LENGTH), THE BOARD THICKNESS RANGE IS 1.00 TO 1.80 mm.
 - GUIDE RIGHT RAM MATES WITH A GUIDE LEFT DAUGHTERCARD.
 - OPEN END VERSION SHOWN FOR CLARITY.



RAM HOLE PATTERN (CONNECTOR SIDE)

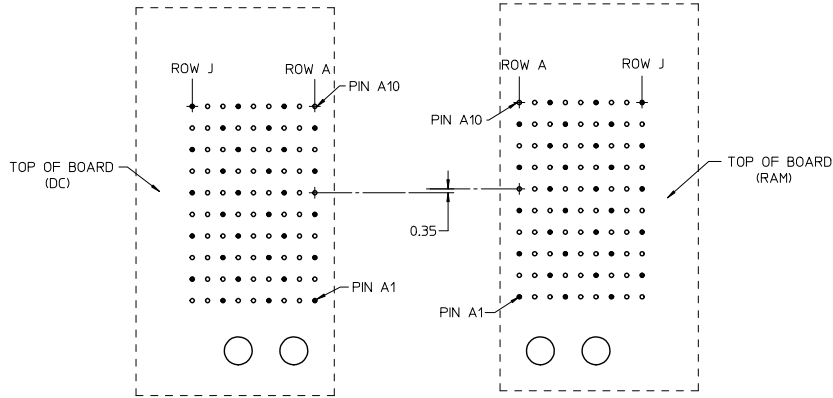
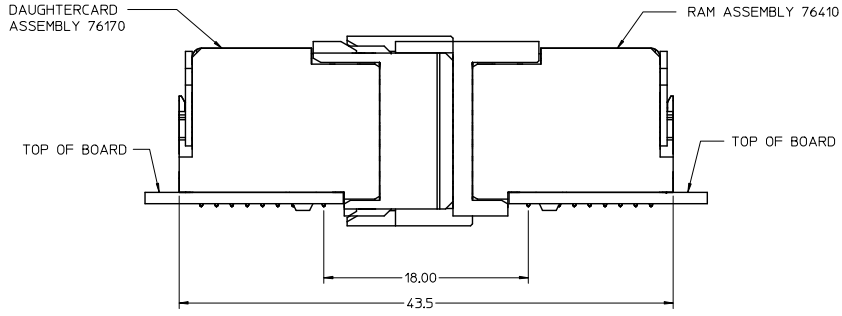
QUALITY SYMBOLS	GENERAL TOLERANCES (UNLESS SPECIFIED)	DIMENSION STYLE		SCALE	DESIGN UNITS	THIRD ANGLE PROJECTION
		MM ONLY	INCH			
▽=0	4 PLACES ±---	mm	INCH			
▽=0	3 PLACES ±---					
▽=0	2 PLACES ±0.13					
▽=0	1 PLACE ±0.25					
▽=0	0 PLACE ±					

APPROVED	DATE	DRAWN BY	DATE	TITLE
JLAUR	2008/10/21	JLAUR	2008/10/21	IMPACT 3 PAIR RAM GUIDE RIGHT
JUNI AK	2008/10/21	JUNI AK	2008/10/21	SIGNAL MODULE SALES DWG

MATERIAL NO.	DOCUMENT NO.	SHEET NO.
SEE TABLE	SD-76410-004	1 OF 2

THIS DRAWING CONTAINS INFORMATION THAT IS PROPRIETARY TO MOLEX INCORPORATED AND SHOULD NOT BE USED WITHOUT WRITTEN PERMISSION

COPLANAR APPLICATION



COPLANAR MATED SIGNAL PATHS



SEE SHEET 1 EC NO: UCP2016-0079 DRAWN BY: MILLER CHKD: APPR: TELD 2015/07/07	QUALITY SYMBOLS	GENERAL TOLERANCES (UNLESS SPECIFIED)	DIMENSION STYLE	SCALE	DESIGN UNITS	THIRD ANGLE PROJECTION
	▽=0	mm INCH	MM ONLY	4:1	METRIC	
	▽=0.13	4 PLACES ± --- ± ---	DRAWN BY: JLAURX DATE: 2008/10/21	TITLE IMPACT 3 PAIR RAM GUIDE RIGHT SIGNAL MODULE SALES DWG 		
	▽=0.25	3 PLACES ± --- ± ---	CHECKED BY: JJONIAK DATE: 2008/10/21			
▽=0	2 PLACES ± 0.13 ± ---	APPROVED BY: JLAURX DATE: 2008/10/21				
▽=0	1 PLACE ± 0.25 ± ---	MATERIAL NO. SEE TABLE				
REV	DESCRIPTION	ANGULAR ±1/2°	DOCUMENT NO. SD-76410-004		SHEET NO. 2 OF 2	
		DRAFT WHERE APPLICABLE MUST REMAIN WITHIN DIMENSIONS	THIS DRAWING CONTAINS INFORMATION THAT IS PROPRIETARY TO MOLEX INCORPORATED AND SHOULD NOT BE USED WITHOUT WRITTEN PERMISSION			