

Excellent Integrated System Limited

Stocking Distributor

Click to view price, real time Inventory, Delivery & Lifecycle Information:

[Molex Connector Corporation](#)
[0764501117](#)

For any questions, you can email us directly:

sales@integrated-circuit.com

MATERIAL NUMBER	# OF COLUMNS	# OF DIFF. PAIR	DM 'A' MAX	DM 'B'
76450-11**	10	20	19.00	17.10
76450-16**	16	32	30.40	28.50

76450-***

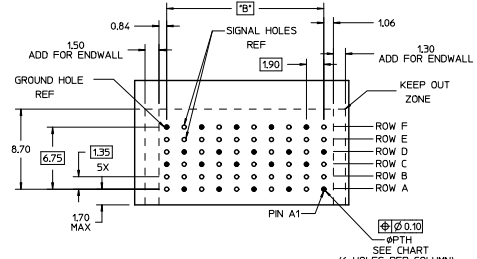
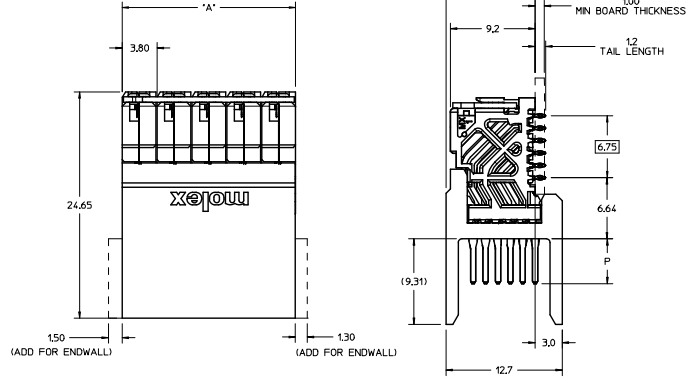
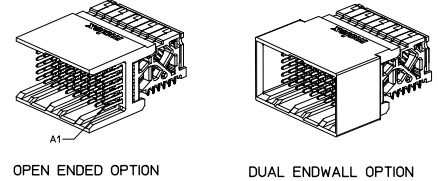
MODULE TYPE
1 = UNGUIDED, LEAD-FREE

OF COLUMNS
1 = 10 COL
6 = 16 COL

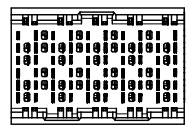
PIN LENGTH (P)
4 = 4.90 (0.46 PTH)
5 = 5.50 (0.46 PTH)
7 = 4.90 (0.39 PTH)
8 = 5.50 (0.39 PTH)

END WALL OPTIONS
0 = OPEN ENDS
1 = LEFT ENDWALL
2 = DUAL ENDWALL
3 = RIGHT ENDWALL

- NOTES:
1. MATERIALS: HOUSING - LIQUID CRYSTAL POLYMER (LCP), GLASS-FILLED, UL94V-0
TERMINALS - HIGH PERFORMANCE COPPER ALLOY
 2. FINISH: 30µm SELECTIVE GOLD IN CONTACT AREA, SELECTIVE TIN ON PCB TAILS; NICKEL OVERALL
 3. FOR FURTHER INFORMATION SEE PRODUCT SPECIFICATION PS-76060-999.
 4. EACH SIGNAL WAFER CONTAINS 2 COLUMNS OF TERMINALS.
 5. PRODUCT TO BE PACKAGE PER PACKAGING SPECIFICATION PK-70873-077.
 6. THIS PART CONFORMS TO CLASS B REQUIREMENTS OF COSMETIC SPEC PS-15499-002.
 7. REFER TO MOLEX SALES DRAWING SD-76460-001 FOR MATING DAUGHTERCARDS.
 8. REFER TO MOLEX PCB ROUTING GUIDE AS-76060-990 FOR ANTIPOP AND ROUTING RECOMMENDATIONS.

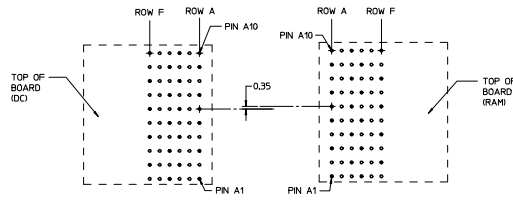
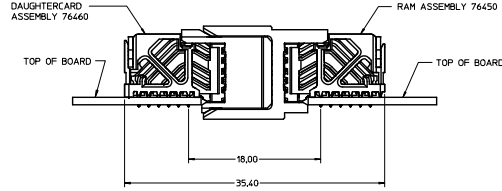


RAM HOLE PATTERN
(CONNECTOR SIDE)



QUALITY SYMBOLS	GENERAL TOLERANCES (UNLESS SPECIFIED)		DIMENSION STYLE		SCALE	DESIGN UNITS	THIRD ANGLE PROJECTION
	mm	INCH	MM ONLY	DATE			
▽=0	4 PLACES ±---	±---	JJONIAK	2009/06/05	5:1	METRIC	IMPACT 2 PAIR RAM UNGUIDED SIGNAL MODULE SALES DRAWING molex DOCUMENT NO. SD-76450-001 SHEET NO. 1 OF 2
▽=0	3 PLACES ±---	±---	CHECKED BY	DATE			
▽=0	2 PLACES ±0.13	±---	JLAURX	2009/06/05			
▽=0	1 PLACE ±0.25	±---	APPROVED BY	DATE			
▽=0	0 PLACE ±---	±---	JLAURX	2010/02/09			
DRAFT WHERE APPLICABLE MUST REMAIN WITHIN DIMENSIONS			ANGULAR ±1/2°		MATERIAL NO.		
			SEE TABLE		THIS DRAWING CONTAINS INFORMATION THAT IS PROPRIETARY TO MOLEX INCORPORATED AND SHOULD NOT BE USED WITHOUT WRITTEN PERMISSION		

COPLANAR APPLICATION



COPLANAR MATED SIGNAL PATHS

DC PIN A10 ----- RAM PIN A10
DC PIN A1 ----- RAM PIN A1

SEE SHEET 1 DEC. NO. 067204-4388 DRAWING: 00764501 28/04/12 CHKD: B3 APPR: [Signature] REV:	QUALITY SYMBOLS	GENERAL TOLERANCES (UNLESS SPECIFIED)	DIMENSION STYLE	SCALE	DESIGN UNITS	THIRD ANGLE PROJECTION	
	4 PLACES ±0 3 PLACES ±0 2 PLACES ±0.13 1 PLACE ±0.25 0 PLACE ±0	mm INCH ±--- ±--- ±--- ±--- ±--- ±--- ±--- ±---	MM ONLY	5:1	METRIC	DRAWN BY: JJONIAK CHECKED BY: JL AURX APPROVED BY: JL AURX DATE: 2009/06/05 DATE: 2009/06/05 DATE: 2010/02/09	TITLE: IMPACT 2 PAIR RAM UNGUIDED SIGNAL MODULE SALES DRAWING
	ANGULAR ±1/2° DRAFT WHERE APPLICABLE MUST REMAIN WITHIN DIMENSIONS	MATERIAL NO. SEE TABLE SIZE D	DOCUMENT NO. SD-76450-001	SHEET NO. 2 OF 2		THIS DRAWING CONTAINS INFORMATION THAT IS PROPRIETARY TO MOLEX INCORPORATED AND SHOULD NOT BE USED WITHOUT WRITTEN PERMISSION	