

Excellent Integrated System Limited

Stocking Distributor

Click to view price, real time Inventory, Delivery & Lifecycle Information:

[Molex Connector Corporation](#)
[0765001807](#)

For any questions, you can email us directly:

sales@integrated-circuit.com

MATERIAL NUMBER	# OF COLUMNS	# OF DIFF PAIR	DM 'A' MAX	DM 'B'	PTH ϕ
76500-8**	8	32	15.20	13.30	0.46±0.05
76500-16**	10	40	19.00	17.10	0.46±0.05
76500-6**	16	64	30.40	28.50	0.46±0.05
76500-8**	8	32	15.20	13.30	0.39±0.05
76500-16**	10	40	19.00	17.10	0.39±0.05
76500-6**	16	64	30.40	28.50	0.39±0.05

76500-***

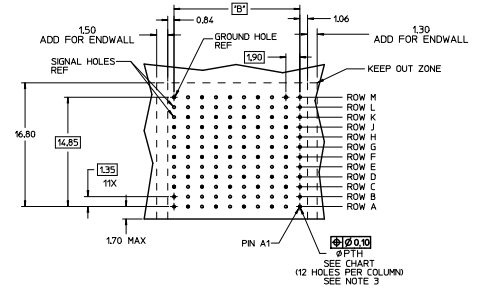
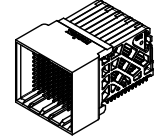
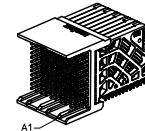
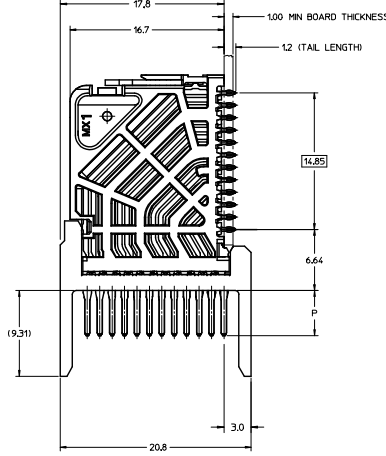
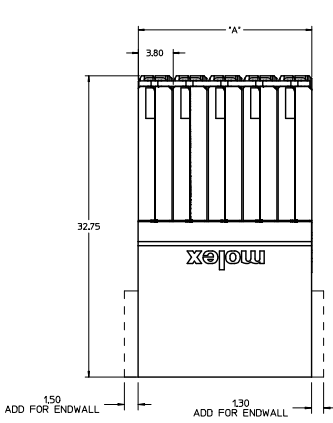
MODULE TYPE
1 = UNGUIDED, LEAD-FREE

PIN LENGTH (P)
4 = 4.90 (0.66 PTH)
5 = 5.50 (0.66 PTH)
7 = 4.90 (0.39 PTH)
8 = 5.50 (0.39 PTH)

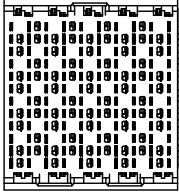
OF COLUMNS
1 = 10 COLUMNS
6 = 16 COLUMNS
8 = 8 COLUMNS

END WALL OPTIONS
0 = OPEN ENDS
1 = LEFT ENDWALL
2 = DUAL ENDWALL
3 = RIGHT ENDWALL

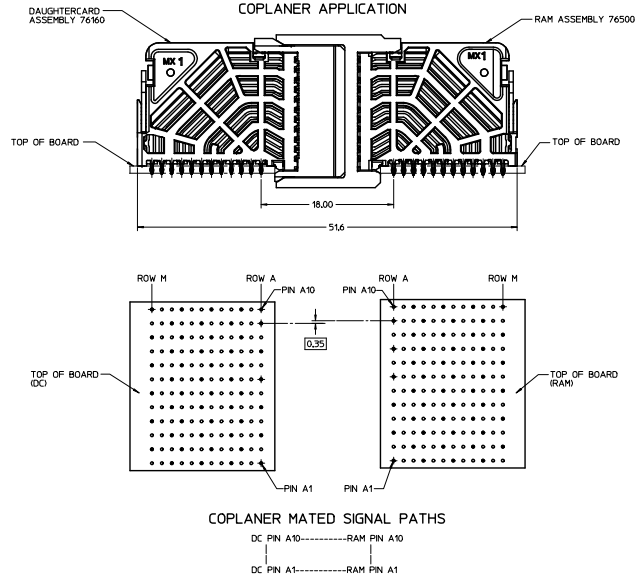
- NOTES:
1. MATERIALS: HOUSING - LIQUID CRYSTAL POLYMER (LCP), GLASS-FILLED UL94V-0 TERMINALS - HIGH PERFORMANCE COPPER ALLOY
 2. FINISH: 30MIN SELECTIVE GOLD IN CONTACT AREA, SELECTIVE TIN ON PCB TAILS, NICKEL OVERALL.
 3. REFER TO MOLEX PRODUCT SPECIFICATION PS-76060-999 FOR PERFORMANCE SPECIFICATIONS AND ADDITIONAL PCB INFORMATION.
 4. EACH SIGNAL WAFER CONTAINS 2 COLUMNS OF TERMINALS.
 5. PRODUCT IS PACKAGED PER PK-70873-041.
 6. THIS PART CONFORMS TO CLASS B REQUIREMENTS OF COSMETIC SPEC PS-45499-002.
 7. REFER TO MOLEX SALES DRAWING SD-76160-001 FOR THE MATING RECEPTABLES.
 8. REFER TO MOLEX PCB ROUTING GUIDE AS-76060-990 FOR ANTIPAD AND ROUTING RECOMMENDATIONS.



RAM HOLE PATTERN (CONNECTOR SIDE)



QUALITY SYMBOLS	GENERAL TOLERANCES (UNLESS SPECIFIED)		DIMENSION STYLE		SCALE	DESIGN UNITS	THIRD ANGLE PROJECTION
	mm	INCH	MM ONLY	DATE			
∇=0	4 PLACES	±.005	+	---	5:1	METRIC	THIRD ANGLE PROJECTION
∇=0	3 PLACES	±.005	+	---			
∇=0	2 PLACES	±0.13	+	±0.10			
∇=0	1 PLACE	±0.25	+	---			
∇=0	0 PLACE	±.005	+	---			
		ANGULAR ±1/2°					
	DRAFT WHERE APPLICABLE	MUST REMAIN WITHIN DIMENSIONS					
		SEE TABLE					
		THIS DRAWING CONTAINS INFORMATION THAT IS PROPRIETARY TO MOLEX INCORPORATED AND SHOULD NOT BE USED WITHOUT WRITTEN PERMISSION					



SEE SHEET 1 DEC. NO. 11/27/04-4979 DRAWN: JGONZALEZ/01 20/11/05/28 CHECK: JAPPELLO 20/05/01/28 DZ	QUALITY SYMBOLS	GENERAL TOLERANCES (UNLESS SPECIFIED)	DIMENSION STYLE	SCALE	DESIGN UNITS	THIRD ANGLE PROJECTION
	▽=0	mm INCH	MM ONLY	4:1	METRIC	⊙
	▽=0	4 PLACES ± --- ± ---	DRAWN BY	DATE	TITLE	
	▽=0	3 PLACES ± --- ± ---	JLAURX	2008/11/24	IMPACT 4 PAIR RAM UNGUIDED SIGNAL MODULE SALES DRAWING	
▽=0	2 PLACES ± 0.13 ± 0.10	CHECKED BY	DATE			
	1 PLACE ± 0.25 ± ---	APPROVED BY	DATE			
	0 PLACE ± --- ± ---	JLAURX	2008/11/26			
	ANGULAR ±1/2°	MATERIAL NO.	SEE TABLE	DOCUMENT NO.	SD-76500-001	SHEET NO.
	DRAFT WHERE APPLICABLE MUST REMAIN WITHIN DIMENSIONS	SIZE	D THIS DRAWING CONTAINS INFORMATION THAT IS PROPRIETARY TO MOLEX INCORPORATED AND SHOULD NOT BE USED WITHOUT WRITTEN PERMISSION			2 OF 2