

## Excellent Integrated System Limited

Stocking Distributor

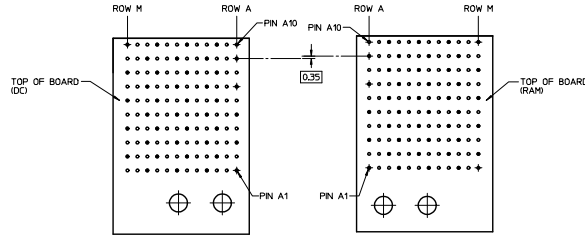
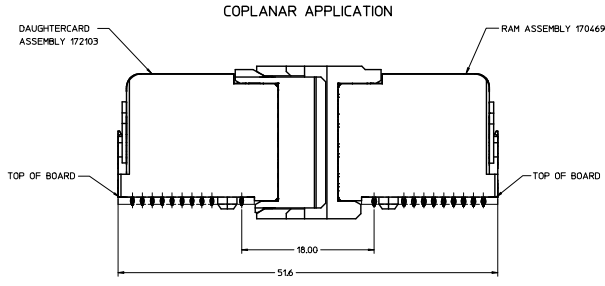
Click to view price, real time Inventory, Delivery & Lifecycle Information:

[Molex Connector Corporation](#)  
[0765005618](#)

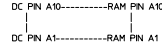
For any questions, you can email us directly:

[sales@integrated-circuit.com](mailto:sales@integrated-circuit.com)





**COPLANAR MATED SIGNAL PATHS**



SEE SHEET 1 EC NO. 07204-4979 DRAWN: GONZALEZ 20/04/18 CHKD: A1 APPR: TEL DATE: 20/07/18	QUALITY SYMBOLS	GENERAL TOLERANCES (UNLESS SPECIFIED)	DRAGON STYLE	SCALE	DESIGN UNITS	THIRD ANGLE PROJECTION
	∇=0	mm INCH	MM ONLY	4:1	METRIC	☉
	∇=0	4 PLACES ± --- ± ---	DRAWN BY	DATE	TITLE	
	∇=0	3 PLACES ± --- ± ---	DVARVARA	2013/07/02	IMPACT 4-PAIR 100-OHM GUIDE RIGHT RAM SIGNAL MODULE SALES DWG. MAPS	
	2 PLACES ± 0.13 ± ---	CHECKED BY	DATE			
	1 PLACE ± 0.25 ± ---	APPROVED BY	DATE			
	0 PLACE ± --- ± ---	TELO	2013/10/18			
	ANGULAR ± 1/2°	MATERIAL NO.				
	DRAFT WHERE APPLICABLE MUST REMAIN WITHIN DIMENSIONS	SEE TABLE				
		SIZE D	THIS DRAWING CONTAINS INFORMATION THAT IS PROPRIETARY TO MOLEX INCORPORATED AND SHOULD NOT BE USED WITHOUT WRITTEN PERMISSION			
			DOCUMENT NO.	SD-170469-0004	SHEET NO.	2 OF 2

MATERIAL NUMBER	# OF COLUMNS	# OF DIFF. PAIR	DIM 'A' MAX	DIM 'B'	PTH Ø
76500-8**	8	32	22.80	13.30	0.46±0.05
76500-16**	10	40	26.60	17.10	0.46±0.05
76500-6**	16	64	38.00	28.50	0.46±0.05
76500-8**	8	32	22.80	13.30	0.39±0.05
76500-16**	10	40	26.60	17.10	0.39±0.05
76500-6**	16	64	38.00	28.50	0.39±0.05

**76500-\*\*\***

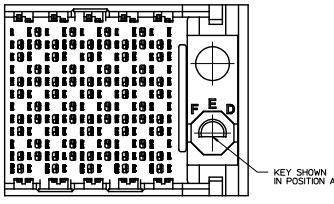
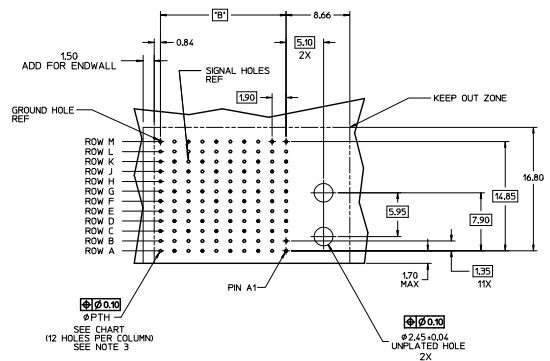
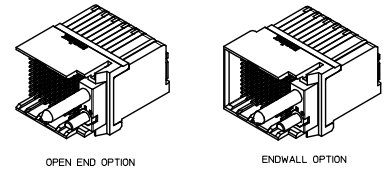
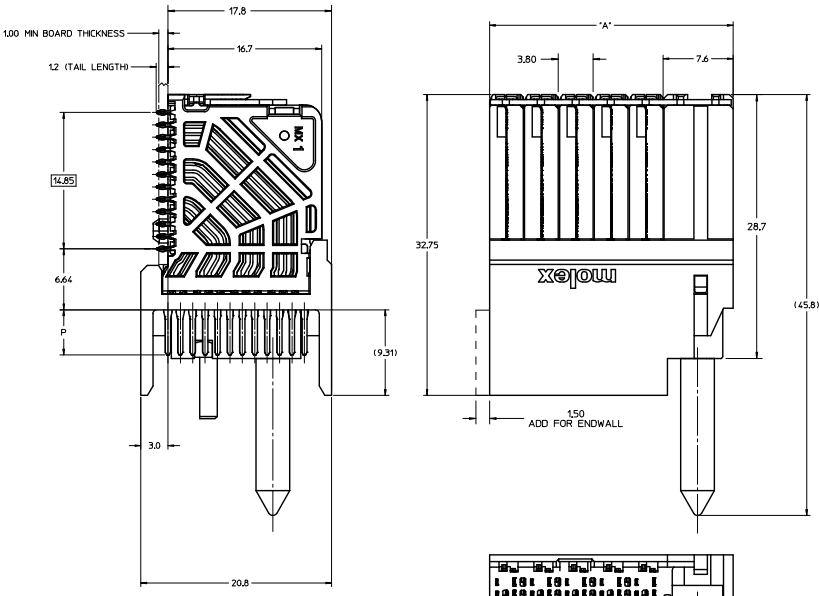
MODULE TYPE  
 5 = RIGHT GUIDED, LEAD-FREE  
 9 = RIGHT GUIDED, LEAD-FREE W/ ENDWALL

PIN LENGTH (Ø)  
 4 = 4.90 10.46 PTH  
 5 = 5.50 10.46 PTH  
 7 = 4.90 10.39 PTH  
 8 = 5.50 10.39 PTH

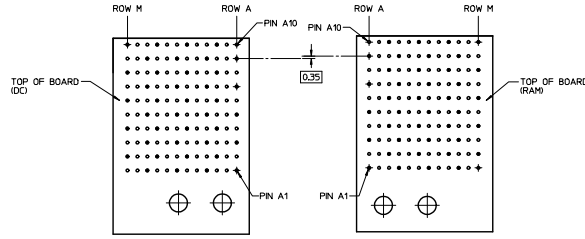
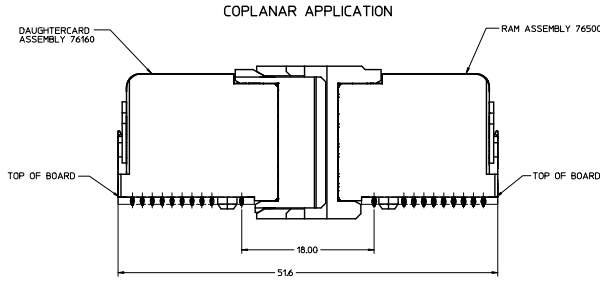
# OF COLUMNS  
 1 = 10 COLUMNS  
 6 = 16 COLUMNS  
 8 = 8 COLUMNS

KEY ORIENTATION  
 0 = NO KEY  
 1 = A    5 = E  
 2 = B    6 = F  
 3 = C    7 = G  
 4 = D    8 = H

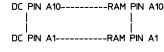
- NOTES:
1. MATERIALS: HOUSING - LIQUID CRYSTAL POLYMER (LCP), GLASS-FILLED, 14,241-2  
TERMINALS - HIGH PERFORMANCE COPPER ALLOY
  2. FINISH: ROHM SELECTIVE GOLD IN CONTACT AREA, SELECTIVE TIN ON PCB TAILS, NICKEL OVERALL.
  3. REFER TO MOLEX PRODUCT SPECIFICATION PS-76060-999 FOR PERFORMANCE SPECIFICATIONS AND ADDITIONAL PCB INFORMATION.
  4. EACH SIGNAL WAFER CONTAINS 2 COLUMNS OF TERMINALS.
  5. PRODUCT IS PACKAGED PER PK-70873-041.
  6. THIS PART CONFORMS TO CLASS B REQUIREMENTS OF COSMETIC SPEC. PS-4509-002.
  7. REFER TO MOLEX SALES DRAWING SD-76160-002 FOR THE MATING RECEPTACLES.
  8. REFER TO MOLEX PCB ROUTING GUIDE AS-76060-990 FOR ANTIPAD AND ROUTING RECOMMENDATIONS.
  9. WHEN USING MOLEX SUPPLIED #2-32 SCREW 73726-0000 (9.50mm ±0.38 THREADABLE SCREW LENGTH). THE MAXIMUM BOARD THICKNESS IS 4.2mm.
  10. GUIDE RIGHT RAM MATES WITH A GUIDE LEFT DAUGHTERCARD.



QUALITY SYMBOLS	GENERAL TOLERANCES (UNLESS SPECIFIED)		DIMENSION STYLE		SCALE	DESIGN UNITS	THIRD ANGLE PROJECTION
	mm	INCH	MM ONLY	DATE	5:1	METRIC	☉
▽=0	4 PLACES ±---	±---	JOULES	2008/12/10	<b>IMPACT 4 PAIR RAM GUIDE RIGHT SIGNAL MODULE SALES DWG</b>  <b>molex</b> DOCUMENT NO. SD-76500-004 SHEET NO. 1 OF 2		
▽=0	3 PLACES ±---	±---	CHECKED BY	DATE			
▽=0	2 PLACES ±0.13	±---	JLAURX	2008/12/11			
▽=0	1 PLACE ±0.25	±---	APPROVED BY	DATE			
▽=0	0 PLACE ±---	±---	JLAURX	2008/12/12			
DRAFT WHERE APPLICABLE MUST REMAIN WITHIN DIMENSIONS		ANGULAR ±1/2°		WATERMARK			
SIZE D		SEE TABLE		THIS DRAWING CONTAINS INFORMATION THAT IS PROPRIETARY TO MOLEX INCORPORATED AND SHOULD NOT BE USED WITHOUT WRITTEN PERMISSION			



**COPLANAR MATED SIGNAL PATHS**



<p>SEE SHEET 1 DEC NO. 072014-4979 DRAWN: GONZALEZ 20/04/05/08 CHKD: Z APPROVED: 20/05/07/09</p>	QUALITY SYMBOLS	GENERAL TOLERANCES (UNLESS SPECIFIED)	DRAGON STYLE	SCALE	DESIGN UNITS	THIRD ANGLE PROJECTION
	∇=0	mm INCH	MM ONLY	4:1	METRIC	☉
	∇=0	4 PLACES ± --- ± ---	DRAWN BY	DATE	TITLE	
	∇=0	3 PLACES ± --- ± ---	JOUILES	2008/12/10	IMPACT 4 PAIR RAM	
	2 PLACES ± 0.13 ± ---	CHECKED BY	DATE	GUIDE RIGHT		
	1 PLACE ± 0.25 ± ---	J.LAURX	2008/12/11	SIGNAL MODULE SALES DWG		
	0 PLACE ± --- ± ---	APPROVED BY	DATE	<b>molex</b>		
	ANGULAR ± 1/2°	J.LAURX	2008/12/12	DOCUMENT NO.		
	DRAFT WHERE APPLICABLE MUST REMAIN WITHIN DIMENSIONS	MATERIAL NO.	SEE TABLE	SD-76500-004	SHEET NO.	
		SIZE	D THIS DRAWING CONTAINS INFORMATION THAT IS PROPRIETARY TO MOLEX INCORPORATED AND SHOULD NOT BE USED WITHOUT WRITTEN PERMISSION		2 OF 2	