

Excellent Integrated System Limited

Stocking Distributor

Click to view price, real time Inventory, Delivery & Lifecycle Information:

[Molex Connector Corporation](#)
[0765009108](#)

For any questions, you can email us directly:

sales@integrated-circuit.com

MATERIAL NUMBER	# OF COLUMNS	# OF DIFF. PAIR	DIM 'A' MAX	DIM 'B'	PTH Ø
76500-8**	8	32	22.80	13.30	0.46±0.05
76500-10**	10	40	26.60	17.10	0.46±0.05
76500-16**	16	64	38.00	28.50	0.46±0.05
76500-8**	8	32	22.80	13.30	0.39±0.05
76500-10**	10	40	26.60	17.10	0.39±0.05
76500-16**	16	64	38.00	28.50	0.39±0.05

76500-***

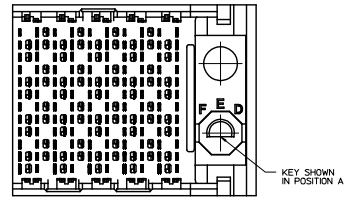
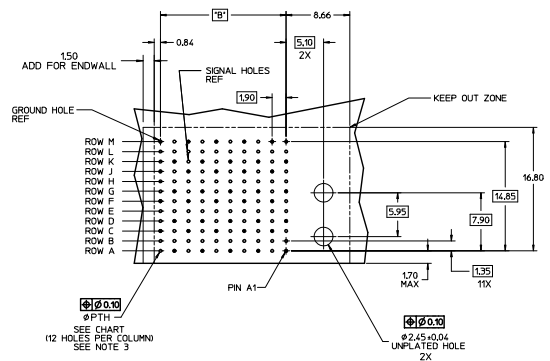
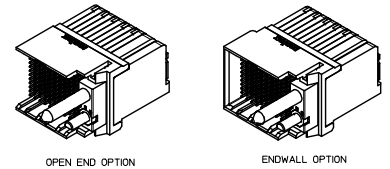
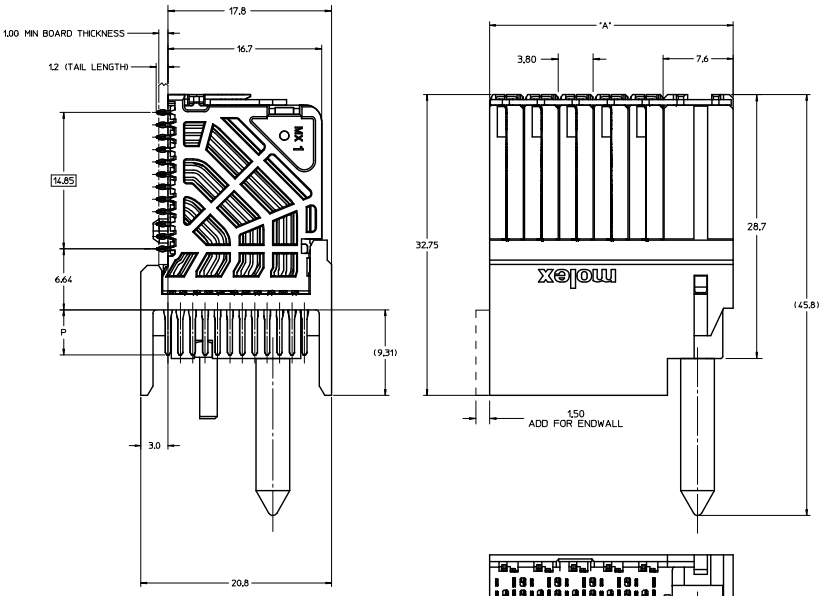
MODULE TYPE
 5 = RIGHT GUIDED, LEAD-FREE
 9 = RIGHT GUIDED, LEAD-FREE W/ ENDWALL

PIN LENGTH (Ø)
 4 = 4.90 10.46 PTH
 5 = 5.50 10.46 PTH
 7 = 4.90 10.39 PTH
 8 = 5.50 10.39 PTH

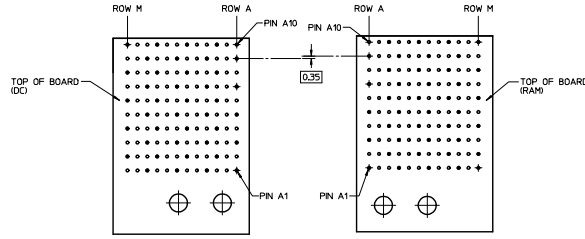
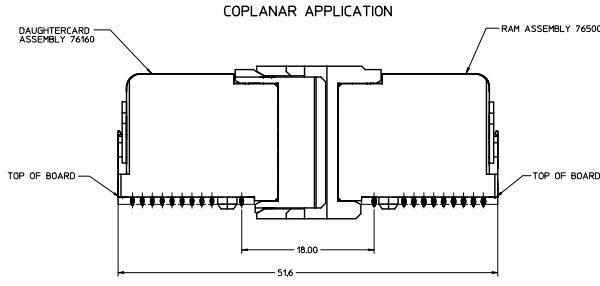
OF COLUMNS
 1 = 10 COLUMNS
 6 = 16 COLUMNS
 8 = 8 COLUMNS

KEY ORIENTATION
 0 = NO KEY
 1 = A 5 = E
 2 = B 6 = F
 3 = C 7 = G
 4 = D 8 = H

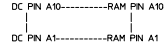
- NOTES:
1. MATERIALS: HOUSING - LIQUID CRYSTAL POLYMER (LCP), GLASS-FILLED, 14,241-2
TERMINALS - HIGH PERFORMANCE COPPER ALLOY
 2. FINISH: ROAM SELECTIVE GOLD IN CONTACT AREA, SELECTIVE TIN ON PCB TAILS, NICKEL OVERALL.
 3. REFER TO MOLEX PRODUCT SPECIFICATION PS-76060-999 FOR PERFORMANCE SPECIFICATIONS AND ADDITIONAL PCB INFORMATION.
 4. EACH SIGNAL WAFER CONTAINS 2 COLUMNS OF TERMINALS.
 5. PRODUCT IS PACKAGED PER PK-70873-041.
 6. THIS PART CONFORMS TO CLASS B REQUIREMENTS OF COSMETIC SPEC. PS-4509-002.
 7. REFER TO MOLEX SALES DRAWING SD-76160-002 FOR THE MATING RECEPTACLES.
 8. REFER TO MOLEX PCB ROUTING GUIDE AS-76060-990 FOR ANTIPAD AND ROUTING RECOMMENDATIONS.
 9. WHEN USING MOLEX SUPPLIED #2-32 SCREW 73226-0000 (9.50mm ±0.38 THREADABLE SCREW LENGTH), THE MAXIMUM BOARD THICKNESS IS 4.4mm.
 10. GUIDE RIGHT RAM MATES WITH A GUIDE LEFT DAUGHTERCARD.



QUALITY SYMBOLS	GENERAL TOLERANCES (UNLESS SPECIFIED)		DIMENSION STYLE		SCALE	DESIGN UNITS	THIRD ANGLE PROJECTION
	mm	INCH	MM ONLY	DATE			
∇=0	4 PLACES ±---	±---	JOULES	2008/12/10	5:1	METRIC	IMPACT 4 PAIR RAM GUIDE RIGHT SIGNAL MODULE SALES DWG
∇=0	3 PLACES ±---	±---	CHECKED BY	DATE			molex
∇=0	2 PLACES ±0.13	±---	JLAURX	2008/12/11			
∇=0	1 PLACE ±0.25	±---	APPROVED BY	DATE			DOCUMENT NO. SD-76500-004 SHEET NO. 1 OF 2
∇=0	0 PLACE ±---	±---	JLAURX	2008/12/12			
DRAFT WHERE APPLICABLE WITHIN DIMENSIONS		ANGULAR ±1/2°		WATERMARK		SEE TABLE	
SIZE D THIS DRAWING CONTAINS INFORMATION THAT IS PROPRIETARY TO MOLEX INCORPORATED AND SHOULD NOT BE USED WITHOUT WRITTEN PERMISSION							



COPLANAR MATED SIGNAL PATHS



<p>SEE SHEET 1 DEC NO. 072034-4979 DRAWN: GONZALEZ 20/04/05/08 CHKD: Z APPR: J.L. LAURX DATE: 20/05/07/09</p>	QUALITY SYMBOLS	GENERAL TOLERANCES (UNLESS SPECIFIED)	DRAGON STYLE	SCALE	DESIGN UNITS	THIRD ANGLE PROJECTION
	∇=0	mm INCH	MM ONLY	4:1	METRIC	⊙
	∇=0	4 PLACES ± --- ± ---	DRAWN BY	DATE	TITLE	
	∇=0	3 PLACES ± --- ± ---	J. LAURX	2008/12/10	IMPACT 4 PAIR RAM	
	2 PLACES ± 0.13 ± ---	CHECKED BY	DATE	GUIDE RIGHT		
	1 PLACE ± 0.25 ± ---	J. LAURX	2008/12/11	SIGNAL MODULE SALES DWG		
	0 PLACE ± --- ± ---	APPROVED BY	DATE	molex		
	ANGULAR ± 1/2°	J. LAURX	2008/12/12	DOCUMENT NO.		
	DRAFT WHERE APPLICABLE MUST REMAIN WITHIN DIMENSIONS	SEE TABLE		SD-76500-004	SHEET NO.	
		SIZE D			2 OF 2	
		THIS DRAWING CONTAINS INFORMATION THAT IS PROPRIETARY TO MOLEX INCORPORATED AND SHOULD NOT BE USED WITHOUT WRITTEN PERMISSION				