

Excellent Integrated System Limited

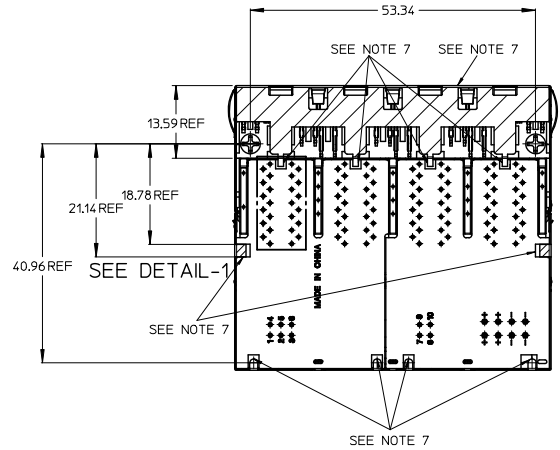
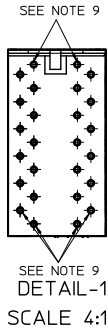
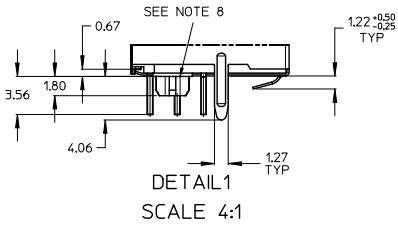
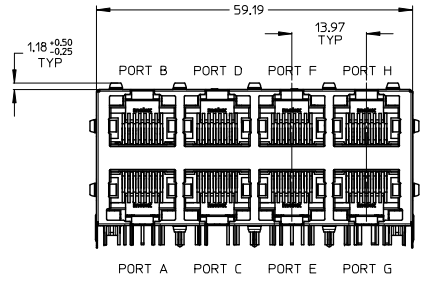
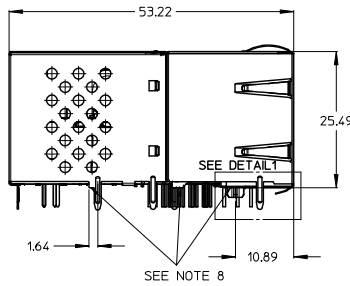
Stocking Distributor

Click to view price, real time Inventory, Delivery & Lifecycle Information:

[Molex Connector Corporation](#)
[0857261001](#)

For any questions, you can email us directly:
sales@integrated-circuit.com

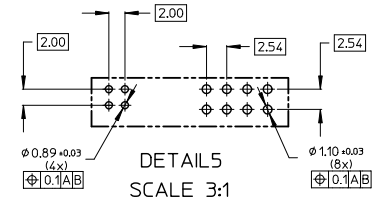
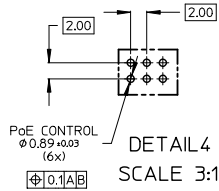
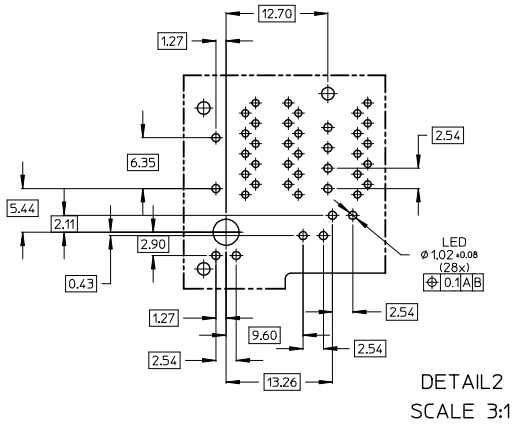
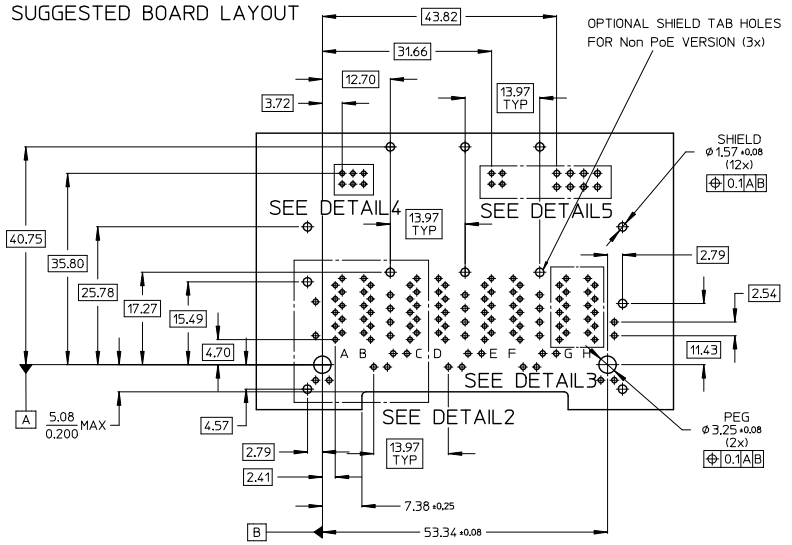
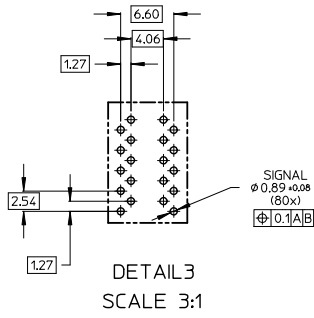
ALL IN ONE POWER SOURCING EQUIPMENT SOLUTION ACCORDING IEEE Std802.3-2012 WITH INTEGRATED POWER OVER ETHERNET PLUS CONTROL CIRCUITRY, I2C BUS CONTROL INTERFACE, GIGABIT ETHERNET TRANSFORMERS AND BICOLOR LED'S. AUTONOMOUS POE PLUS PSE OPERATION OR COMPREHENSIVE PORT CONTROL WITH EXTERNAL POWER MANAGEMENT.



- NOTES:
- 1 - SHIELD MATERIAL: BRASS; PLATING: Ni PRE-PLATING
 - 2 - PLASTIC MATERIAL: POLYESTER (PBT) BLACK, 30%GR. UL 94V-0
 - 3 - TERMINALS MATERIAL: COPPER ALLOY
-BASE FINISH: NICKEL
-CONTACT SURFACE FINISH GOLD OR GOLD FLASH OVER PALLADIUM NICKEL EXCEEDS PRODUCT REQUIREMENTS BASED ON PS-85717-001
 - 4 - MATING INTERFACE ACCORDING TO IEC 60603-7
 - 5 - PRODUCT SPECIFICATION: PS-85717-001
 - 6 - PACKAGING SPECIFICATION: PK-85729-101
 - 7 - TRACES WITHOUT INSULATION NOT ALLOWED IN THE DASHED AREAS. (TO AVOID SHORTS TO SHIELD)
 - 8 - STAND OFF TO SYSTEM BOARD
 - 9 - STUBBED PINS -> AVOID TO ROUTE TRACES OR TO PLACE ANY VIAS OR PADS BELOW THESE PINS
 - 10 - MISSING MAGNETICS AND LED INFORMATIONS SEE PS-85717-001

NO CHANGE IEC NO: 2013/04/09 DRAWN: JBADER 2013/07/29 CHK: MMANGARUDOV 2013/07/29 APPR: SSTEINKE 2015/11/26	QUALITY SYMBOLS	GENERAL TOLERANCES (UNLESS SPECIFIED)	DIMENSION STYLE	SCALE	DESIGN UNITS	THIRD ANGLE PROJECTION															
	$\nabla=0$ $\nabla=0$	<table border="1"> <thead> <tr> <th></th> <th>mm</th> <th>INCH</th> </tr> </thead> <tbody> <tr> <td>4 PLACES</td> <td>±---</td> <td>±---</td> </tr> <tr> <td>3 PLACES</td> <td>±---</td> <td>±---</td> </tr> <tr> <td>2 PLACES</td> <td>±0.25</td> <td>±0.01</td> </tr> <tr> <td>1 PLACE</td> <td>±0.5</td> <td>±0.02</td> </tr> </tbody> </table> ANGULAR ± 5°		mm	INCH	4 PLACES	±---	±---	3 PLACES	±---	±---	2 PLACES	±0.25	±0.01	1 PLACE	±0.5	±0.02	MM ONLY	2:1	METRIC	
		mm	INCH																		
	4 PLACES	±---	±---																		
3 PLACES	±---	±---																			
2 PLACES	±0.25	±0.01																			
1 PLACE	±0.5	±0.02																			
DESCRIPTION	DRAFT WHERE APPLICABLE MUST REMAIN WITHIN DIMENSIONS	DRAWN BY: JBADER DATE: 2011/05/20 CHECKED BY: MMANGARUDOV DATE: 2011/05/23 APPROVED BY: SSTEINKE DATE: 2013/01/28	TITLE	GIGABIT MAGNETIC JACK INTEGRATED PSE POEPLUS 2X4 LED																	
REV		MATERIAL NO. 857261001	MOLEX INCORPORATED		DOCUMENT NO. SD-85726-101	SHEET NO. 1 OF 3															

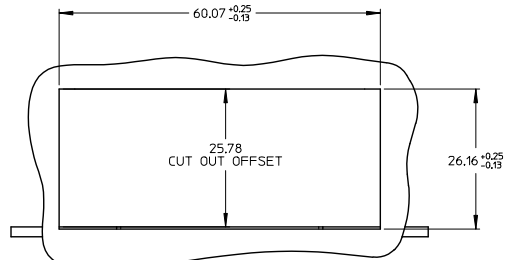
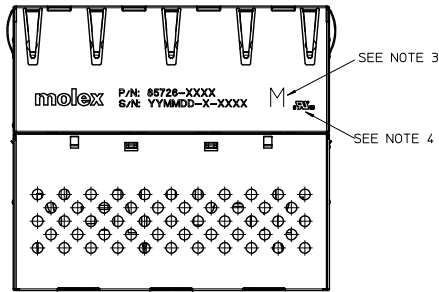
SUGGESTED BOARD LAYOUT



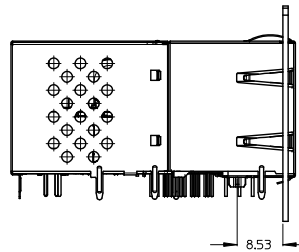
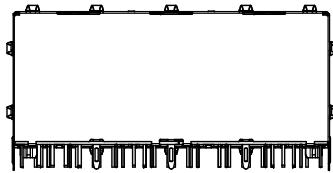
NO CHANGES EC NO: 2013/04/09 DRAWN BY: JIBADER CHKD BY: MMANGARUDOV DATE: 2013/07/29 APPROV. SITE TIME: 2015/11/26	QUALITY SYMBOLS	GENERAL TOLERANCES (UNLESS SPECIFIED)	DIMENSION STYLE	SCALE	DESIGN UNITS	THIRD ANGLE PROJECTION
	▽=0	mm INCH	MM ONLY	2:1	METRIC	☉
	▽=0	4 PLACES ± --- ± ---	DRAWN BY	DATE	TITLE	
		3 PLACES ± --- ± ---	JIBADER	2011/05/20	GIGABIT MAGNETIC JACK INTEGRATED PSE POEPLUS 2X4 LED	
	2 PLACES ± 0.25 ± 0.01	CHECKED BY	DATE			
	1 PLACE ± 0.5 ± 0.02	MMANGARUDOV	2011/05/23			
	ANGULAR ± 5 °	APPROVED BY	DATE			
		SSTEINKE	2013/01/28			
	DRAFT WHERE APPLICABLE MUST REMAIN WITHIN DIMENSIONS	MATERIAL NO.	DOCUMENT NO.			
		SEE SHEET 1	SD-85726-101			
		SIZE: THIS DRAWING CONTAINS INFORMATION THAT IS PROPRIETARY TO MOLEX INCORPORATED AND SHOULD NOT BE USED WITHOUT WRITTEN PERMISSION				

PRINTING
LED VERSION
P/N: 85726-1001
S/N: YYMMDD-CM-CONSECUTIVE NUMBER

PRINTING



SUGGESTED PANEL CUT OUT



- NOTES:
1 - PRINTING MARKED BY LASER
2 - INSCRIPTION:
1st LINE: PART NUMBER
2nd LINE: DATE CODE (YEAR, MONTH, DAY)- MANUFACTURER ID - CONSECUTIVE NUMBER
3 - MICROSEMI VERSION MARKED BY CAPITAL M
4 - UL LOGO

3D UPDATED EC NO: 2013/04/09 DRAWN: JBADER 2013/07/29 CHK: MMANGARUDOV 2013/07/29 APP: SSTEINKE 2015/11/26	QUALITY SYMBOLS ▽=0 ▽=0	GENERAL TOLERANCES (UNLESS SPECIFIED)		DIMENSION STYLE MM ONLY	SCALE 2:1	DESIGN UNITS METRIC	THIRD ANGLE PROJECTION
		4 PLACES ±--- ±---	3 PLACES ±--- ±---	2 PLACES ±0.25 ±0.01	1 PLACE ±0.5 ±0.02	ANGULAR ± 5 °	DRAWN BY JBADER
DRAFT WHERE APPLICABLE MUST REMAIN WITHIN DIMENSIONS		MATERIAL NO. SEE SHEET 1		DOCUMENT NO. SD-85726-101		SHEET NO. 3 OF 3	
THIS DRAWING CONTAINS INFORMATION THAT IS PROPRIETARY TO MOLEX INCORPORATED AND SHOULD NOT BE USED WITHOUT WRITTEN PERMISSION							