

Excellent Integrated System Limited

Stocking Distributor

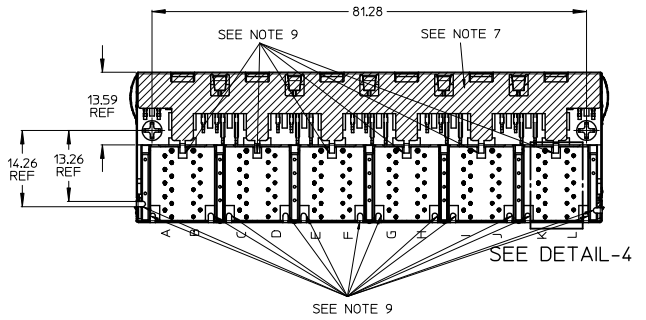
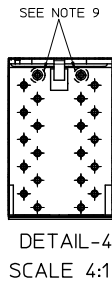
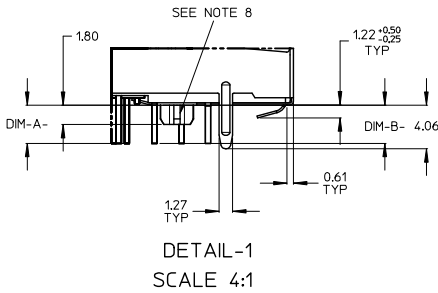
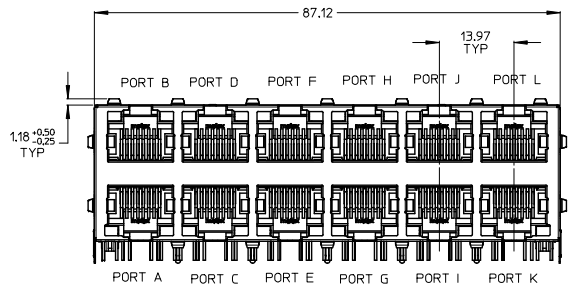
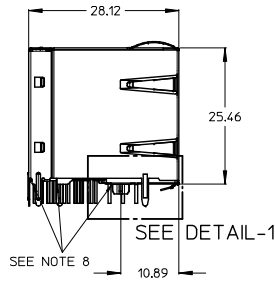
Click to view price, real time Inventory, Delivery & Lifecycle Information:

[Molex Connector Corporation](#)
[0857281004](#)

For any questions, you can email us directly:

sales@integrated-circuit.com

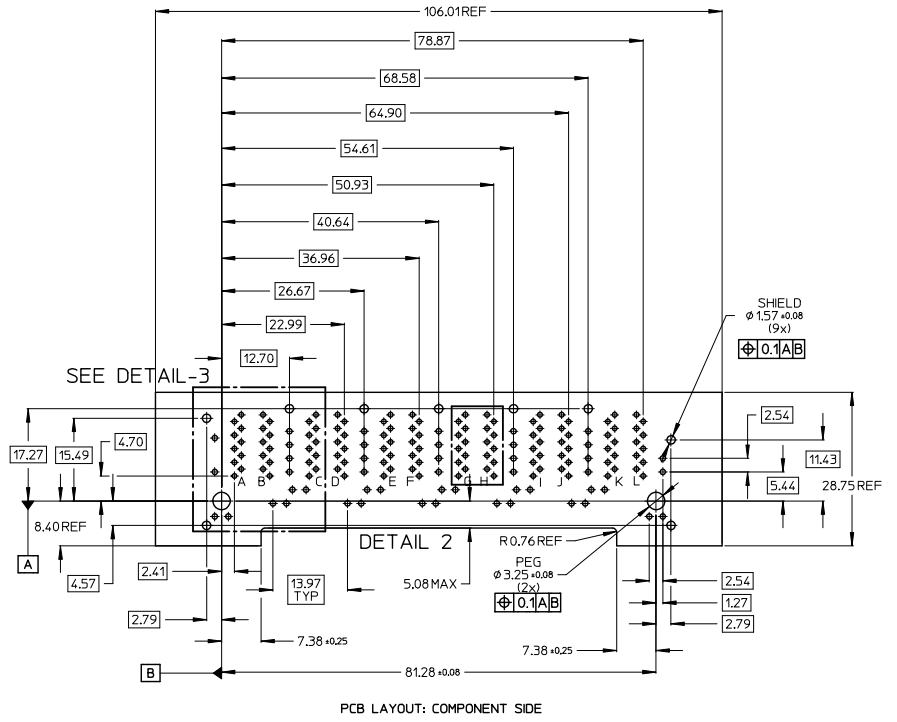
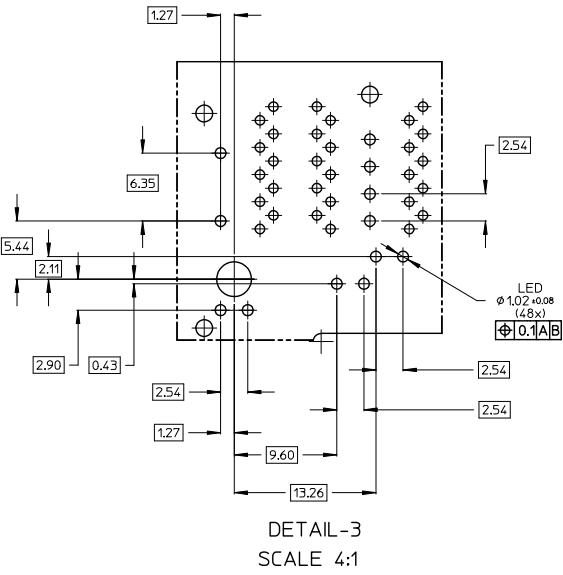
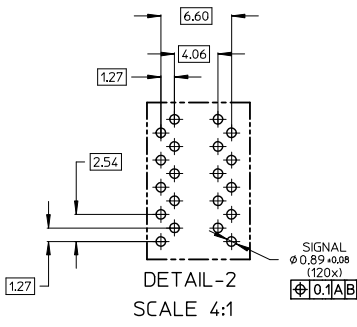
GIGABIT MAGNETIC JACK 2x6 LED



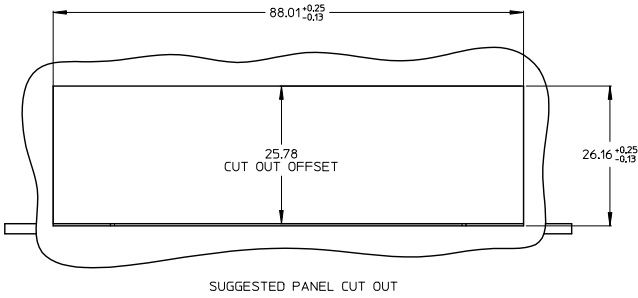
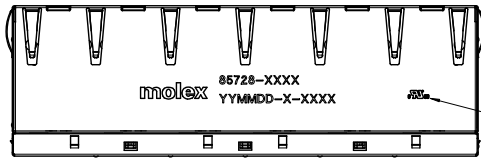
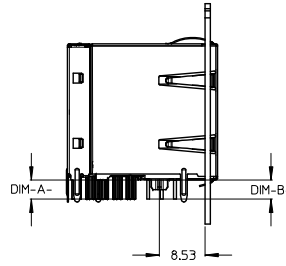
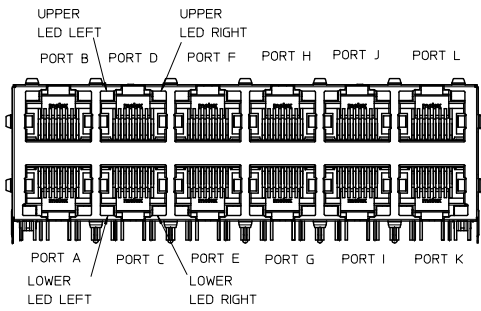
NOTES:

- 1 - SHIELD MATERIAL: BRASS; PLATING: NICKEL PRE-PLATING
- 2 - PLASTIC MATERIAL: POLYESTER (PBT), BLACK, UL 94V-0
- 3 - RJ45 TERMINALS MATERIAL: COPPER ALLOY
CONTACT AREA PLATING: 0.76 MICROMETER GOLD OVER 1.9 MICROMETER NICKEL
PHY TERMINALS: TIN PLATED
- 4 - MATING INTERFACE ACCORDING TO IEC 60603-7
- 5 - PRODUCT SPECIFICATION: PS-85728-001
- 6 - PACKAGING SPECIFICATION: PK-85728-001
- 7 - TRACES WITHOUT INSULATION NOT ALLOWED IN THE DASHED AREAS.
(TO AVOID SHORTS TO SHIELD)
- 8 - STAND OFF TO SYSTEM BOARD
- 9 - STUB PINS AND SHIELD LATCHES; AVOID TO ROUTE TRACES OR TO PLACE ANY
VIAS OR PADS BELOW THESE PINS
- 10 - FOR MAGNETIC AND LED INFORMATIN SEE SPEC PS-85728-001

NO CHANGE IEC NO: 2015/10/05 TIT: JWBADER CHK: CHIKMANGARUDOV APPR: SSTEINKE DATE: 2015/10/05 APPR: SSTEINKE DATE: 2016/04/27	QUALITY SYMBOLS ▽=0 ▽=0	GENERAL TOLERANCES (UNLESS SPECIFIED) mm INCH 4 PLACES ±--- ±--- 3 PLACES ±--- ±--- 2 PLACES ±0.25 ±--- 1 PLACE ±0.5 ±--- ANGULAR ± 1 °	DIMENSION STYLE MM ONLY	SCALE 2:1	DESIGN UNITS METRIC	THIRD ANGLE PROJECTION
	DRAWN BY: MMANGARUDOV CHECKED BY: JWBADER APPROVED BY: SSTEINKE DATE: 2010/03/19 DATE: 2010/03/22 DATE: 2010/05/11	TITLE GIGABIT MAGNETIC JACK 2X6 LED	MATERIAL NO. SEE SHEET 3	DOCUMENT NO. SD-85728-001	SHEET NO. 1 OF 4	
	DRAFT WHERE APPLICABLE MUST REMAIN WITHIN DIMENSIONS					
	THIS DRAWING CONTAINS INFORMATION THAT IS PROPRIETARY TO MOLEX INCORPORATED AND SHOULD NOT BE USED WITHOUT WRITTEN PERMISSION					



NO CHANGE	EC NO:	2015/10/05	QUALITY SYMBOLS ▽=0 ∇=0	GENERAL TOLERANCES (UNLESS SPECIFIED)		DIMENSION STYLE MM ONLY		SCALE	DESIGN UNITS	THIRD ANGLE PROJECTION
	DRWING: JBADER	2015/10/05		mm	INCH	DATE	METRIC	TITLE		
	CHK: CHIKMANGARUDOV	2015/10/05		4 PLACES ± --- ± ---	DRAWN BY	MMANGARUDOV	2010/03/19	GIGABIT MAGNETIC JACK 2X6 LED		
	APP: SSTEINKE	2010/04/27		3 PLACES ± --- ± ---	CHECKED BY	JBADER	2010/03/22	MOLEX INCORPORATED		
		2 PLACES ± 0.25 ± ---	1 PLACE ± 0.5 ± ---	APPROVED BY	SSTEINKE	2010/05/11	MATERIAL NO.	DOCUMENT NO.	SHEET NO.	
		ANGULAR ± 1 °		DRAFT WHERE APPLICABLE MUST REMAIN WITHIN DIMENSIONS		SEE SHEET 3		SD-85728-001	2 OF 4	
<p>SIZE: THIS DRAWING CONTAINS INFORMATION THAT IS PROPRIETARY TO MOLEX INCORPORATED AND SHOULD NOT BE USED WITHOUT WRITTEN PERMISSION</p>										



PART NUMBER	UPPER & LOWER LED LEFT		UPPER & LOWER LED RIGHT		DIMENSION -A- FOR SIGNAL PIN LENGTH	DIMENSION -B- FOR LED PIN LENGTH
	COLOUR 1	COLOUR 2	COLOUR 1	COLOUR 2		
85728-1001	GREEN	GREEN	GREEN	GREEN	3.56	3.56
85728-1002	GREEN	ORANGE	GREEN	ORANGE	3.56	3.56
85728-1003	GREEN	GREEN	GREEN	YELLOW	3.56	3.56
85728-1004	GREEN	ORANGE	GREEN	ORANGE	3.56	3.56
85728-1006	GREEN	GREEN	GREEN	ORANGE	3.56	3.56
85728-1008	GREEN	YELLOW	GREEN	YELLOW	3.56	3.56
85728-1012	GREEN	YELLOW	GREEN	YELLOW	3.56	3.56
85728-1013	GREEN	GREEN	GREEN	GREEN	3.56	3.56
85728-1014	YELLOW	GREEN	GREEN	GREEN	3.56	3.56
85728-1016	GREEN	GREEN	GREEN	YELLOW	3.56	3.56

85728-3001	GREEN	GREEN	GREEN	GREEN	2.2	3.56
------------	-------	-------	-------	-------	-----	------

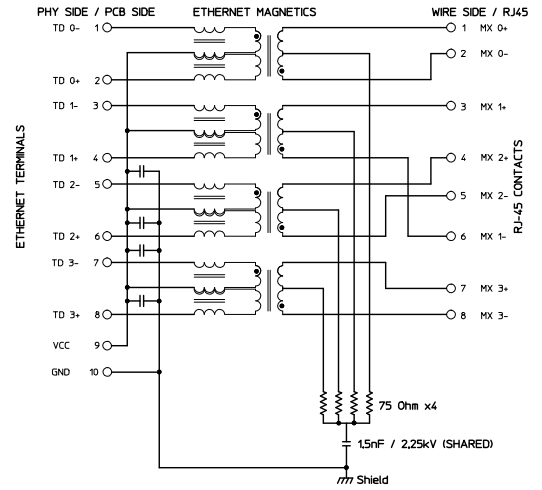
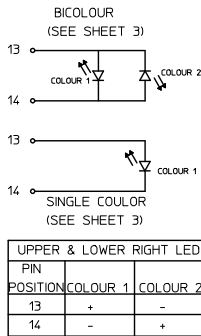
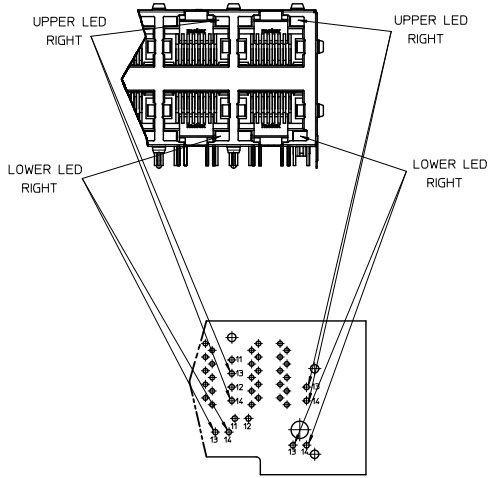
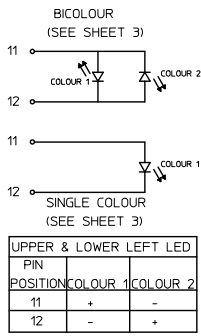
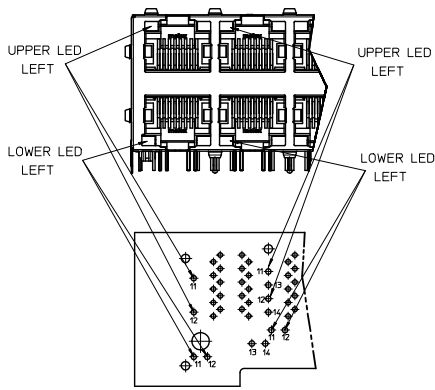
85728-4001	GREEN	GREEN	GREEN	GREEN	2.5	3.56
------------	-------	-------	-------	-------	-----	------

ADDITIONAL LED COLOURS AND CONFIGURATIONS AVAILABLE ON REQUEST

NOTES:

- 1 - PRINTING MARKED BY LASER
- 2 - INSCRIPTION:
 - 1st LINE: PART NUMBER
 - 2nd LINE: DATE CODE (YEAR.MONTH.DAY) - MANUFACTURER ID - COSECUTIVE NUMBER
 - 3 - UL LOGO

NEW P/N 85728-4001 EC NO: 2015/10/05 DRAWN BY: JBADER CHECKED BY: CHIKOMANGARUDOV APPROVED BY: SSTEINKE APPROVAL TIME: 2016/04/21	QUALITY SYMBOLS	GENERAL TOLERANCES (UNLESS SPECIFIED)	DIMENSION STYLE	SCALE	DESIGN UNITS	THIRD ANGLE PROJECTION
	▽=0 ▽=0	mm INCH 4 PLACES ±--- ±--- 3 PLACES ±--- ±--- 2 PLACES ±0.25 ±--- 1 PLACE ±0.5 ±--- ANGULAR ± 1 °	MM ONLY	2:1	METRIC	TITLE: GIGABIT MAGNETIC JACK 2X6 LED MOLEX INCORPORATED MATERIAL NO. SEE BOM DOCUMENT NO. SD-85728-001
	DRAFT WHERE APPLICABLE MUST REMAIN WITHIN DIMENSIONS					SHEET NO. 3 OF 4
						THIS DRAWING CONTAINS INFORMATION THAT IS PROPRIETARY TO MOLEX INCORPORATED AND SHOULD NOT BE USED WITHOUT WRITTEN PERMISSION



PIN#	ETHERNET SIGNAL
1	TD 0+
2	TD 0-
3	TD 1+
4	TD 1-
5	TD 2+
6	TD 2-
7	TD 3+
8	TD 3-
9	VCC
10	GND

SCHEMATIC UPDATED	DATE: 2015/10/05	QUALITY SYMBOLS	GENERAL TOLERANCES (UNLESS SPECIFIED)	DIMENSION STYLE	SCALE	DESIGN UNITS	THIRD ANGLE PROJECTION
	DRWING: JBADER	2015/10/05	▽=0	MM ONLY	2:1	METRIC	
REV	DESCRIPTION		4 PLACES ±--- ±---	DRAWN BY	DATE	TITLE	
	CHIKOMANGARUDOV		3 PLACES ±--- ±---	MMANGARUDOV	2010/03/19	GIGABIT MAGNETIC JACK	
	APPROVAL TIME		2 PLACES ±0.25 ±---	CHECKED BY	DATE	2X6 LED	
	2016/04/21		1 PLACE ±0.5 ±---	JBADER	2010/03/22	MOLEX INCORPORATED	
			ANGULAR ± 1 °	APPROVED BY	DATE	MATERIAL NO.	
				SSTEINKE	2010/05/11	SEE SHEET 3	
						DOCUMENT NO.	
						SD-85728-001	
						SHEET NO.	
						4 OF 4	
						THIS DRAWING CONTAINS INFORMATION THAT IS PROPRIETARY TO MOLEX INCORPORATED AND SHOULD NOT BE USED WITHOUT WRITTEN PERMISSION	