



Distributor of Molex Connector Corporation: Excellent Integrated System Limited
Datasheet of 0873813474 - Connector Receptacle 34 Position 0.079" (2.00mm) Gold Surface Mount

Contact us: sales@integrated-circuit.com Website: www.integrated-circuit.com

Excellent Integrated System Limited

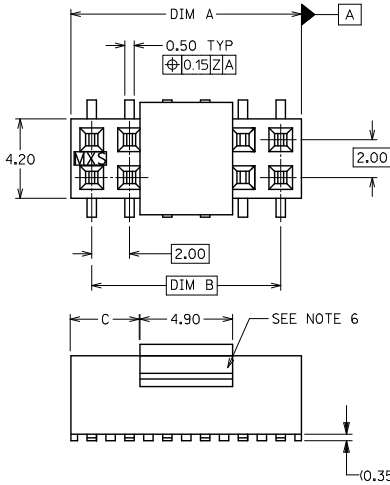
Stocking Distributor

Click to view price, real time Inventory, Delivery & Lifecycle Information:

[Molex Connector Corporation](#)
[0873813474](#)

For any questions, you can email us directly:
sales@integrated-circuit.com

Contact us: sales@integrated-circuit.com Website: www.integrated-circuit.com



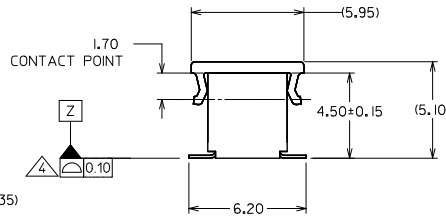
PART NO. LEGEND
FOR TUBE PACKAGING ONLY

87381 - * * * *

CIRCUIT SIZE PLATING (SEE NOTE 1)

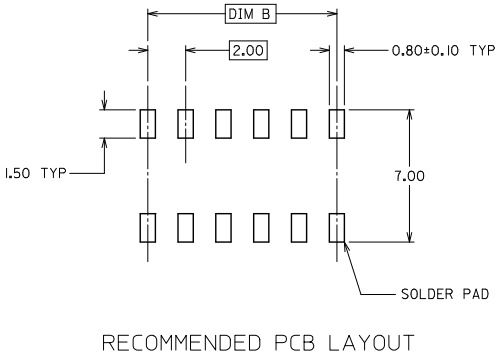
3
4
5

6 COVER
7 NO COVER



NOTES:

- PLATING FINISH:
 - 0.76um MIN. GOLD IN CONTACT AREA 1.27um MIN. TIN IN SOLDER TAIL AREA BOTH OVER 1.27um MIN. NICKEL OVERALL
 - 0.38um MIN. GOLD IN CONTACT AREA 1.27um MIN. TIN IN SOLDER TAIL AREA BOTH OVER 1.27um MIN. NICKEL OVERALL
 - 0.05um MIN. GOLD FLASH IN CONTACT AREA 1.90um MIN. TIN IN SOLDER TAIL AREA BOTH OVER 1.27um MIN. NICKEL OVERALL
- 12 CKT SIZE SHOWN FOR ASSY ILLUSTRATION ONLY. (SEE CHART FOR ALL PART SIZES). 6 CKT & 30 CKT ILLUSTRATED FOR TAPE/REEL VERSION ON SHT 2.
- PRODUCT SPECIFICATION PS-87380 APPLIES. COPLANARITY OF SOLDER TAILS ARE TO BE MEASURED BY RESTING THE PART ON A FLAT GAUGE SURFACE ↑+0.05 UPWARDS AND ↓-0.05 DOWNWARDS.
- TUBE PACKAGING STANDARD.
- COVER IS OPTIONAL. SEE LEGEND.
- PARTS SHALL BE PACKED IN MOISTURE BARRIER BAG.
- REFER SHT 3 FOR P/N: 87381-6000 T&R ILLUSTRATION.

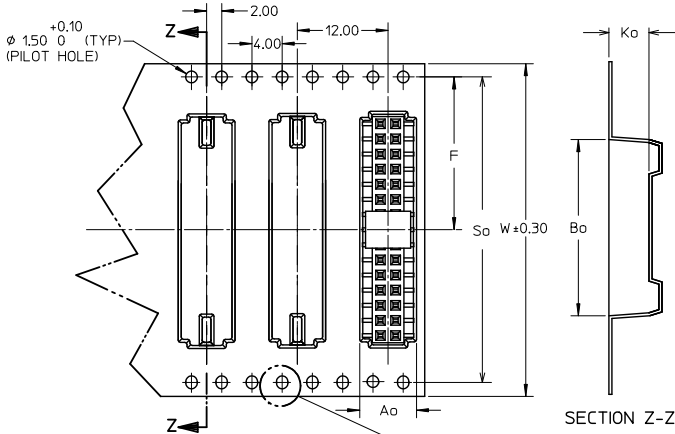


RECOMMENDED PCB LAYOUT

| REV | DESCRIPTION | QUALITY SYMBOLS | GENERAL TOLERANCES (UNLESS SPECIFIED) | | DIMENSION STYLE | | SCALE | DESIGN UNITS | THIRD ANGLE PROJECTION |
|-----|-------------|-----------------|---------------------------------------|------|---|------------|-------|--------------|------------------------|
| | | | mm | INCH | MM ONLY | DATE | | | |
| 4 | PLACES | ± --- | ± --- | | DRAWN BY | DATE | TITLE | | |
| 3 | PLACES | ± --- | ± --- | | CHECKED BY | DATE | | | |
| 2 | PLACES | ± 0.20 | ± --- | | LCHANG | 1999/04/23 | | | |
| 1 | PLACE | ± --- | ± --- | | APPROVED BY | DATE | | | |
| | | ANGULAR ± 3° | | | SQUEK | 1999/04/26 | | | |
| | | | | | MATERIAL NO. | | | | |
| | | | | | SEE TABLE | | | | |
| | | | | | THIS DRAWING CONTAINS INFORMATION THAT IS PROPRIETARY TO MOLEX INCORPORATED AND SHOULD NOT BE USED WITHOUT WRITTEN PERMISSION | | | | |

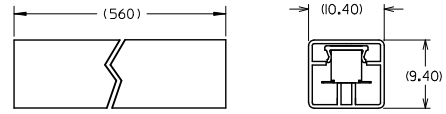
| PART NUMBER | CKT. SIZE | DIM A | DIM B | DIM C |
|-------------|-----------|-------|-------|-------|
| 87381-06** | 6 | 6.00 | 4.00 | 0.55 |
| 87381-08** | 8 | 8.00 | 6.00 | 1.55 |
| 87381-10** | 10 | 10.00 | 8.00 | 2.55 |
| 87381-12** | 12 | 12.00 | 10.00 | 3.55 |
| 87381-14** | 14 | 14.00 | 12.00 | 4.55 |
| 87381-16** | 16 | 16.00 | 14.00 | 5.55 |
| 87381-18** | 18 | 18.00 | 16.00 | 6.55 |
| 87381-20** | 20 | 20.00 | 18.00 | 7.55 |
| 87381-22** | 22 | 22.00 | 20.00 | 8.55 |
| 87381-24** | 24 | 24.00 | 22.00 | 9.55 |
| 87381-26** | 26 | 26.00 | 24.00 | 10.55 |
| 87381-28** | 28 | 28.00 | 26.00 | 11.55 |
| 87381-30** | 30 | 30.00 | 28.00 | 12.55 |
| 87381-32** | 32 | 32.00 | 30.00 | 13.55 |
| 87381-34** | 34 | 34.00 | 32.00 | 14.55 |
| 87381-36** | 36 | 36.00 | 34.00 | 15.55 |
| 87381-38** | 38 | 38.00 | 36.00 | 16.55 |
| 87381-40** | 40 | 40.00 | 38.00 | 17.55 |
| 87381-42** | 42 | 42.00 | 40.00 | 18.55 |
| 87381-44** | 44 | 44.00 | 42.00 | 19.55 |
| 87381-46** | 46 | 46.00 | 44.00 | 20.55 |
| 87381-48** | 48 | 48.00 | 46.00 | 21.55 |
| 87381-50** | 50 | 50.00 | 48.00 | 22.55 |

Contact us: sales@integrated-circuit.com Website: www.integrated-circuit.com

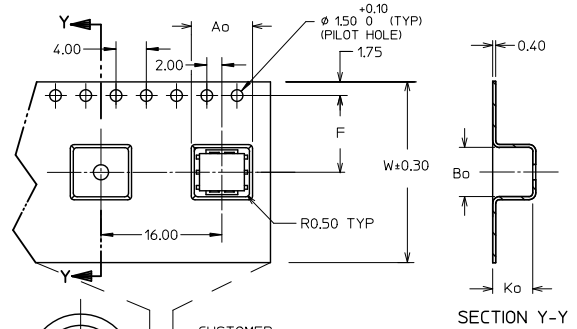
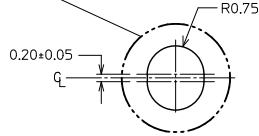


SECTION Z-Z

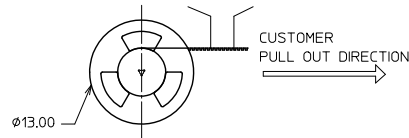
CONNECTOR ORIENTATION
IN TUBE



30 CKT FOR ILLUSTRATION ONLY
TAPE & REEL TYPE 'B'



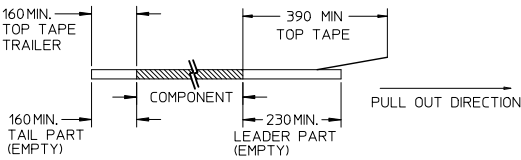
SECTION Y-Y



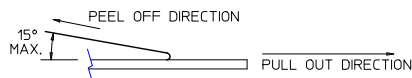
6 CKT FOR ILLUSTRATION ONLY
TAPE & REEL TYPE 'A'

NOTES:

1. LEADER AND TRAILER TAPE



2. PEELING OFF FORCE OF THE TOP TAPE: 20-80gf.
(PEELING DIRECTION AS SHOWN IN FOLLOWING FIGURE)



3. PACKAGING STANDARD IS AS PER EIA-481.

4. TAPE & REEL QUANTITY = SEE TABLE

| | | | | | | |
|---|--|--|---|--|----------------|------------------------|
| REVISE NOTE 4. EC NO. S2012-0026 DRAWN BY DRWNSKANG CHKD BY SEE APPR: HLONG 2011/07/29 2011/08/03 2011/08/03 | QUALITY SYMBOLS | GENERAL TOLERANCES (UNLESS SPECIFIED) | DIMENSION STYLE | SCALE | DESIGN UNITS | THIRD ANGLE PROJECTION |
| | $\nabla=0$ $\nabla=0$ $\nabla=0$ | mm INCH 4 PLACES ± --- ± --- 3 PLACES ± --- ± --- 2 PLACES ± 0.20 ± --- 1 PLACE ± --- ± --- ANGULAR ± 3 ° | MM ONLY | NTS | METRIC | |
| | | DRAFT WHERE APPLICABLE MUST REMAIN WITHIN DIMENSIONS | SEE TABLE | MGRID, TOP ENTRY RECEPT. 4.50MM HT., SMT | | |
| | | | | MOLEX INCORPORATED | | |
| | | | | | SD-87381-***6* | SHEET NO. 2 OF 4 |
| | | | THIS DRAWING CONTAINS INFORMATION THAT IS PROPRIETARY TO MOLEX INCORPORATED AND SHOULD NOT BE USED WITHOUT WRITTEN PERMISSION | | | |

Contact us: sales@integrated-circuit.com Website: www.integrated-circuit.com

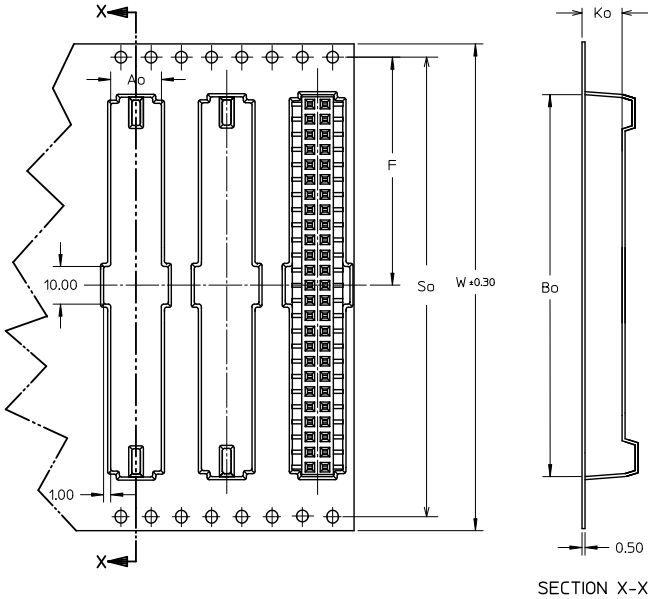
| CKT SIZE | PART NO. WITH CAP IN TUBE | PART NO. WITH CAP IN TAPE / REEL | W | So | Ao | F | Bo | Ko | T&R TYPE (SHT 2) | T&R QTY PER REEL |
|----------|---------------------------|----------------------------------|----|-------|------|-------|-------|------|------------------|------------------|
| 6 | 87381-0664 | 87381-9002 | 24 | - | 7.00 | 11.50 | 6.50 | 5.30 | A | 500 |
| 8 | 87381-0864 | 87381-9003 | 24 | - | 7.00 | 11.50 | 8.50 | 5.30 | A | 600 |
| 10 | 87381-1064 | 87381-9005 | 24 | - | 7.00 | 11.50 | 10.50 | 5.30 | A | 680 |
| 14 | 87381-1464 | 87381-9006 | 32 | 28.40 | 7.20 | 14.20 | 14.50 | 5.30 | B | 750 |
| 16 | 87381-1664 | 87381-9004 | 32 | 28.40 | 7.20 | 14.20 | 16.50 | 5.30 | B | 800 |
| 18 | 87381-1864 | 87381-1800 | 32 | 28.40 | 7.20 | 14.20 | 18.50 | 5.30 | B | 750 |
| 20 | 87381-2063 | 87381-2000 | 32 | 28.40 | 7.20 | 14.20 | 20.50 | 5.30 | B | 800 |
| 22 | 87381-2264 | 87381-2200 | 44 | 40.40 | 7.20 | 20.20 | 22.50 | 5.30 | B | 500 |
| 30 | 87381-3064 | 87381-3000 | 44 | 40.40 | 7.20 | 20.20 | 30.50 | 5.30 | B | 500 |
| 32 | 87381-3264 | 87381-3200 | 44 | 40.40 | 7.20 | 20.20 | 32.50 | 5.30 | B | 500 |
| 34 | 87381-3464 | 87381-3400 | 56 | 52.40 | 7.20 | 26.20 | 34.50 | 5.30 | B | 500 |
| 44 | 87381-4464 | 87381-4400 | 56 | 52.40 | 7.20 | 26.20 | 44.50 | 5.30 | B | 500 |
| 46 | 87381-4664 | 87381-4600 | 72 | 68.40 | 7.20 | 34.20 | 46.50 | 5.30 | B | 750 |
| 50 | 87381-5063 | 87381-5030 | 72 | 68.40 | 7.20 | 34.20 | 50.50 | 5.30 | B | 500 |
| 50 | 87381-5064 | 87381-5000 | 72 | 68.40 | 7.20 | 34.20 | 50.50 | 5.30 | B | 500 |

| | | | | | | |
|--|-----------------------|---------------------------------------|---|---|--------------|------------------------|
| REVISE NOTE 4. EC NO: S2012-0026 DRAWN: KANG CHKD: ATSEE APPR: HLONG 2011/07/29 2011/08/03 2011/08/03 | QUALITY SYMBOLS | GENERAL TOLERANCES (UNLESS SPECIFIED) | DIMENSION STYLE | SCALE | DESIGN UNITS | THIRD ANGLE PROJECTION |
| | DESCRIPTION | mm INCH | MM ONLY | NTS | METRIC | |
| | ▽=0 | 4 PLACES ± --- ± --- | DRAWN BY DATE | TITLE | | |
| | ▽=0 | 3 PLACES ± --- ± --- | JAMES 1998/01/08 | MGRID, TOP ENTRY RECEPT. 4.50MM HT., SMT | | |
| ▽=0 | 2 PLACES ± 0.20 ± --- | CHECKED BY DATE | MATERIAL NO. | | | |
| ▽=0 | 1 PLACE ± --- ± --- | LCHANG 1999/04/23 | MOLEX INCORPORATED | | | |
| | ANGULAR ± 3 ° | APPROVED BY DATE | DOCUMENT NO. | | | |
| | | SOUK 1999/04/26 | SD-87381-***6* | | | |
| | | | SHEET NO. | | | |
| | | | 3 OF 4 | | | |
| | | | THIS DRAWING CONTAINS INFORMATION THAT IS PROPRIETARY TO MOLEX INCORPORATED AND SHOULD NOT BE USED WITHOUT WRITTEN PERMISSION | | | |

Contact us: sales@integrated-circuit.com Website: www.integrated-circuit.com

| CKT SIZE | PART NO. WITHOUT CAP IN TUBE | PART NO. WITHOUT CAP IN TAPE / REEL | W | So | Ao | F | Bo | Ko | T&R TYPE (SHT 2) | T&R QTY PER REEL |
|----------|------------------------------|-------------------------------------|----|-------|------|-------|-------|------|------------------|------------------|
| 50 | 87381-5074 | 87381-6000 | 72 | 68.40 | 6.80 | 34.20 | 50.50 | 8.00 | B | 500 |

ILLUSTRATION FOR P/N: 87381-6000
50 CKT IN T&R W/O CAP



SECTION X-X

| REVISE NOTE 4. EC. NO. S2012-0026 2011/07/29 DRAWN:KANG CHK:CATSEE 2011/08/03 APPR:MLONG 2011/08/03 REV E11 | QUALITY SYMBOLS | GENERAL TOLERANCES (UNLESS SPECIFIED) | DIMENSION STYLE | SCALE | DESIGN UNITS | THIRD ANGLE PROJECTION | | | | | | | | | | | | | | | |
|--|---|--|---|--|----------------|------------------------|------|------|----------|------|------|----------|-------|------|---------|------|------|---------|-----|--------|---|
| | $\sqrt{\text{A}}=0$ $\sqrt{\text{B}}=0$ $\sqrt{\text{C}}=0$ | <table border="1"> <thead> <tr> <th></th> <th>mm</th> <th>INCH</th> </tr> </thead> <tbody> <tr> <td>4 PLACES</td> <td>±---</td> <td>±---</td> </tr> <tr> <td>3 PLACES</td> <td>±---</td> <td>±---</td> </tr> <tr> <td>2 PLACES</td> <td>±0.20</td> <td>±---</td> </tr> <tr> <td>1 PLACE</td> <td>±---</td> <td>±---</td> </tr> </tbody> </table> | | mm | INCH | 4 PLACES | ±--- | ±--- | 3 PLACES | ±--- | ±--- | 2 PLACES | ±0.20 | ±--- | 1 PLACE | ±--- | ±--- | MM ONLY | NTS | METRIC | <input checked="" type="checkbox"/> THIRD ANGLE <input type="checkbox"/> FIRST ANGLE |
| | | mm | INCH | | | | | | | | | | | | | | | | | | |
| | 4 PLACES | ±--- | ±--- | | | | | | | | | | | | | | | | | | |
| 3 PLACES | ±--- | ±--- | | | | | | | | | | | | | | | | | | | |
| 2 PLACES | ±0.20 | ±--- | | | | | | | | | | | | | | | | | | | |
| 1 PLACE | ±--- | ±--- | | | | | | | | | | | | | | | | | | | |
| DESCRIPTION | DRAFT WHERE APPLICABLE MUST REMAIN WITHIN DIMENSIONS | DRAWN BY: JAMES DATE: 1998/01/08 CHECKED BY: LCHANG DATE: 1999/04/23 APPROVED BY: SQUEK DATE: 1999/04/26 | TITLE | MGRID, TOP ENTRY RECEPT. 4.50MM HT., SMT | | | | | | | | | | | | | | | | | |
| | | | MATERIAL NO. | MOLEX INCORPORATED | | | | | | | | | | | | | | | | | |
| | | | SEE TABLE | DOCUMENT NO. | SD-87381-***6* | SHEET NO. 4 OF 4 | | | | | | | | | | | | | | | |
| | | | THIS DRAWING CONTAINS INFORMATION THAT IS PROPRIETARY TO MOLEX INCORPORATED AND SHOULD NOT BE USED WITHOUT WRITTEN PERMISSION | | | | | | | | | | | | | | | | | | |