



**Distributor of Molex Connector Corporation: Excellent Integrated System Limited**  
Datasheet of 0873815019 - Connector Receptacle 50 Position 0.079" (2.00mm) Gold Surface Mount

Contact us: [sales@integrated-circuit.com](mailto:sales@integrated-circuit.com) Website: [www.integrated-circuit.com](http://www.integrated-circuit.com)

---

## **Excellent Integrated System Limited**

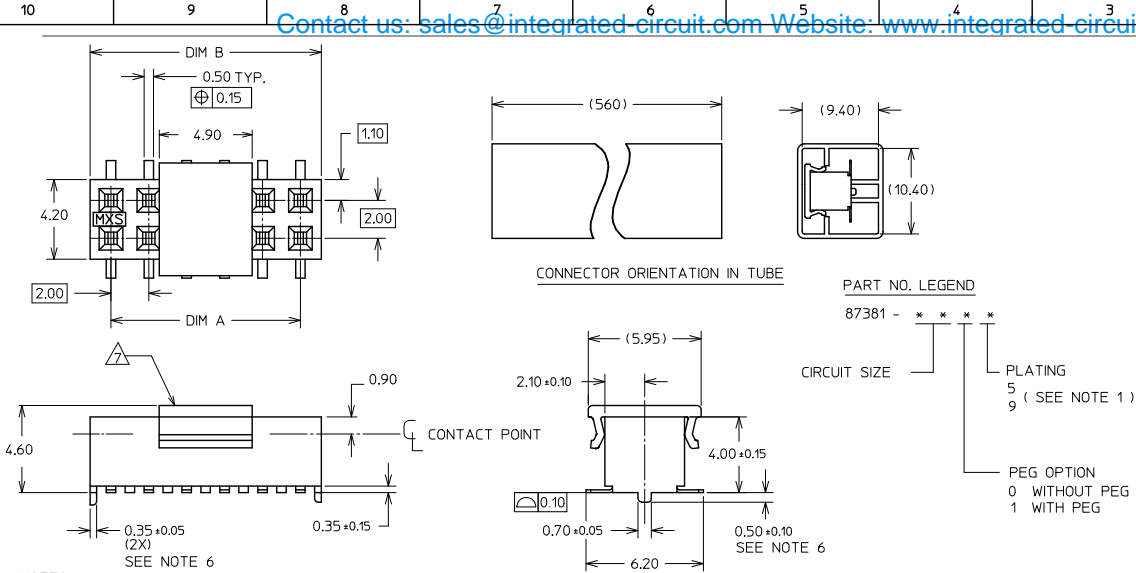
Stocking Distributor

Click to view price, real time Inventory, Delivery & Lifecycle Information:

[Molex Connector Corporation](#)  
[0873815019](#)

For any questions, you can email us directly:  
[sales@integrated-circuit.com](mailto:sales@integrated-circuit.com)

Contact us: sales@integrated-circuit.com Website: www.integrated-circuit.com



PART NUMBER W/ CAP IN TUBE	CKT. SIZE	DIM A	DIM B
87381-04**	4	2.00	4.00
87381-06**	6	4.00	6.00
87381-08**	8	6.00	8.00
87381-10**	10	8.00	10.00
87381-12**	12	10.00	12.00
87381-14**	14	12.00	14.00
87381-16**	16	14.00	16.00
87381-18**	18	16.00	18.00
87381-20**	20	18.00	20.00
87381-22**	22	20.00	22.00
87381-24**	24	22.00	24.00
87381-26**	26	24.00	26.00
87381-28**	28	26.00	28.00
87381-30**	30	28.00	30.00
87381-32**	32	30.00	32.00
87381-34**	34	32.00	34.00
87381-36**	36	34.00	36.00
87381-38**	38	36.00	38.00
87381-40**	40	38.00	40.00
87381-42**	42	40.00	42.00
87381-44**	44	42.00	44.00
87381-46**	46	44.00	46.00
87381-48**	48	46.00	48.00
87381-50**	50	48.00	50.00

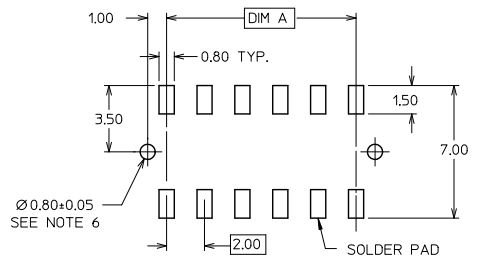
**PART NO. LEGEND**  
87381 - \* \* \* \* \*

**CIRCUIT SIZE**     \* \* \* \* \*

**PLATING**  
5  
9 (SEE NOTE 1)

**PEG OPTION**  
0 WITHOUT PEG  
1 WITH PEG

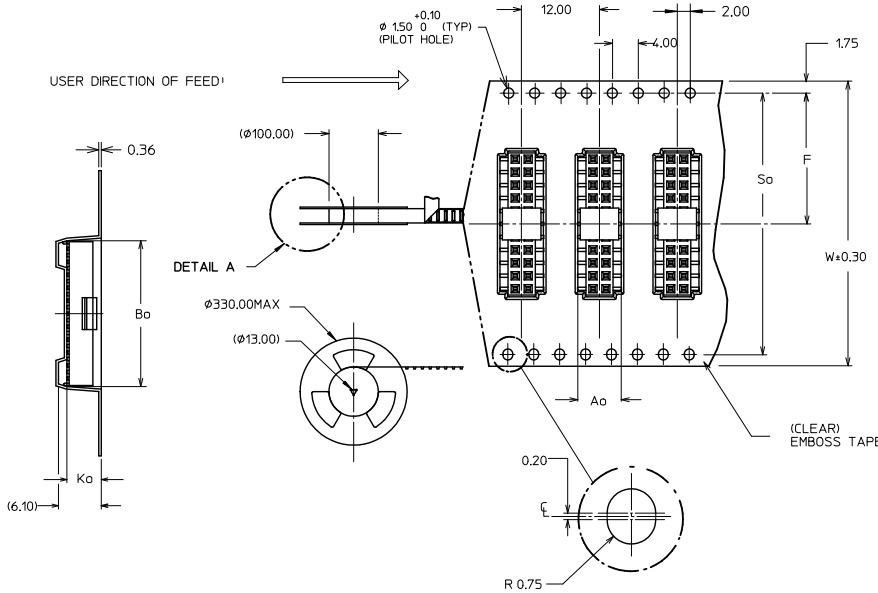
- NOTES:**
- PLATING FINISH :
    - 5 - 0.76um MIN. GOLD IN CONTACT AREA  
1.27um MIN TIN IN SOLDER TAIL AREA  
BOTH OVER 1.27um MIN NICKEL OVERALL
    - 9 - 0.38um MIN GOLD IN CONTACT AREA  
1.27um MIN TIN IN SOLDER TAIL AREA  
BOTH OVER 1.27um MIN NI OVERALL
  - MATERIAL:  
HOUSING : NYLON 4/6, 94V-0, COLOUR BLACK  
CAP : NYLON, GLASS FILLED, COLOUR BLACK  
TERMINAL : COPPER ALLOY  
EMBOSS TAPE : CLEAR POLYSTYRENE  
COVER TAPE : CLEAR POLYESTER
  - PRODUCT SPECIFICATION PS-87380 APPLIES
  - COPLANARITY OF SOLDER TAILS ARE TO BE MEASURED BY RESTING THE PART ON A FLAT GAUGE SURFACE
  - OTHER PLATING OPTIONS AVAILABLE. PLEASE CONTACT FACTORY
  - PEG AND PCB HOLE OPTIONAL. SEE PART LEGEND FOR PART CONFIGURATON
  - POSITION OF CAP TO BE LOCATED AT CENTER OF DIM A REGARDLESS OF CKT SIZES.
  - 12 CKT SIZE SHOWN FOR ILLUSTRATION ONLY. SEE CHART FOR ALL AVAILABLE PART SIZES. 22 CKT ILLUSTRATED FOR TAPE/REEL VERSION ON SHT 2.
  - PACKING QTY PER REEL IS APPROX. 800PCS.
  - PARTS SHALL BE PACKED IN MOISTURE BARRIER BAG.



ADD P/N: 87381-9013 EC No. S2012-0584 DRAWN:SKANG 2012/01/31 CHK:DATSEE 2012/02/23 APPR:MLONG 2012/02/24 REV DESCRIPTION	QUALITY SYMBOLS ▼=0 ▽=0	GENERAL TOLERANCES (UNLESS SPECIFIED) <table border="1"> <tr><th></th><th>mm</th><th>INCH</th></tr> <tr><td>4 PLACES</td><td>± ---</td><td>± ---</td></tr> <tr><td>3 PLACES</td><td>± ---</td><td>± ---</td></tr> <tr><td>2 PLACES</td><td>± 0.2</td><td>± ---</td></tr> <tr><td>1 PLACE</td><td>± ---</td><td>± ---</td></tr> </table> ANGULAR ± 3°		mm	INCH	4 PLACES	± ---	± ---	3 PLACES	± ---	± ---	2 PLACES	± 0.2	± ---	1 PLACE	± ---	± ---	DIMENSION STYLE MM ONLY	SCALE NTS	DESIGN UNITS METRIC	THIRD ANGLE PROJECTION
		mm	INCH																		
4 PLACES	± ---	± ---																			
3 PLACES	± ---	± ---																			
2 PLACES	± 0.2	± ---																			
1 PLACE	± ---	± ---																			
DRAWN BY: KSEE DATE: 1999/01/06 CHECKED BY: DATE: 1999/01/11 APPROVED BY: DATE: 1999/01/11 MATERIAL NO. SKTOH SEE TABLE THIS DRAWING CONTAINS INFORMATION THAT IS PROPRIETARY TO MOLEX INCORPORATED AND SHOULD NOT BE USED WITHOUT WRITTEN PERMISSION	TITLE MGRID, TOP ENTRY RECEPT. 4MM HT., W/PEGS/CAP IN TUBE AND T&R, SMT MOLEX INCORPORATED DOCUMENT NO. SD-87381-***3 SHEET NO. 1 OF 2																				

Contact us: sales@integrated-circuit.com Website: www.integrated-circuit.com

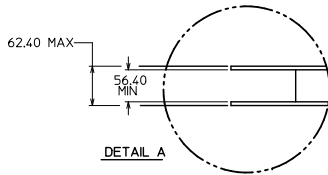
CKT SIZE	PLATING FINISH (SEE NOTE #1)	PART NO WITH CAP IN TAPE / REEL	PART NO WITH CAP IN TUBE	W	So	Ao	F	Bo	Ko
06	9	87381-9013	87381-0619	24.00	-	7.00	11.50	6.50	4.80
08	9	87381-9016	87381-0819	24.00	-	7.00	11.50	8.50	4.80
10	5	87381-9030	87381-1015	24.00	-	7.00	11.50	10.50	4.80
30	9	87381-9015	87381-3019	56.00	52.40	7.00	26.20	30.50	4.80
50	9	87381-9027	87381-5019	72.00	68.40	7.00	34.20	50.50	4.80
50	5	87381-9028	87381-5015	72.00	68.40	7.00	34.20	50.50	4.80



**NOTES:**

- LEADER AND TRAILER TAPE
- PEELING OFF FORCE OF THE TOP TAPE: 20-80gf.  
 (PEELING DIRECTION AS SHOWN IN FOLLOWING FIGURE)
- PACKAGING STANDARD IS AS PER EIA-481.
- TAPE & REEL QUANTITY = 800 PCS/REEL

TAPE & REEL ORIENTATION (22 CKT SHOWN FOR REF)  
(NTS)



ADD P/N: 87381-9013 EC NO: S2012-0584 DRAWN: SKANG 2012/01/31 CHK: DATSEE 2012/02/23 APPR: HLONG 2012/02/24 REV: E1	QUALITY SYMBOLS ▽=0 ▽=0	GENERAL TOLERANCES (UNLESS SPECIFIED)		DIMENSION STYLE MM ONLY		SCALE NTS	DESIGN UNITS METRIC	THIRD ANGLE PROJECTION
		4 PLACES ± --- ± --- 3 PLACES ± --- ± --- 2 PLACES ± 0.2 ± --- 1 PLACE ± --- ± --- ANGULAR ± 3 °	DRAWN BY KSEE 1999/01/06 CHECKED BY KCLING 1999/01/11 APPROVED BY SKTOH 1999/01/11	DATE 1999/01/06 DATE 1999/01/11 DATE 1999/01/11	TITLE MGRID, TOP ENTRY RECEPT. 4MM HT., W/PEGS/CAP IN TUBE AND T&R, SMT	MOLEX INCORPORATED	SHEET NO. 2 OF 2	
DRAFT WHERE APPLICABLE MUST REMAIN WITHIN DIMENSIONS		MATERIAL NO. SEE TABLE		DOCUMENT NO. SD-87381-***3		THIS DRAWING CONTAINS INFORMATION THAT IS PROPRIETARY TO MOLEX INCORPORATED AND SHOULD NOT BE USED WITHOUT WRITTEN PERMISSION		