

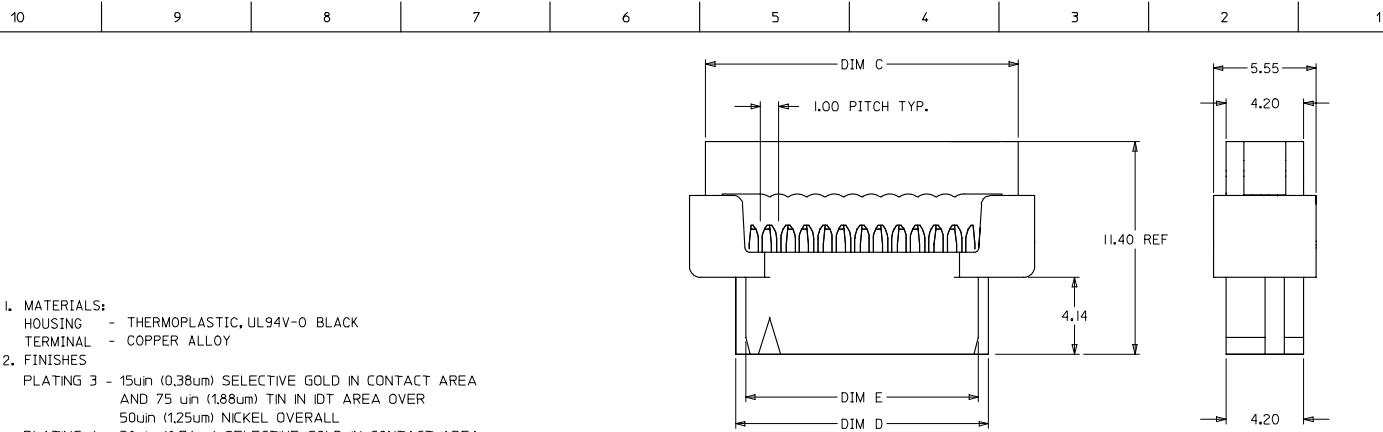
## Excellent Integrated System Limited

Stocking Distributor

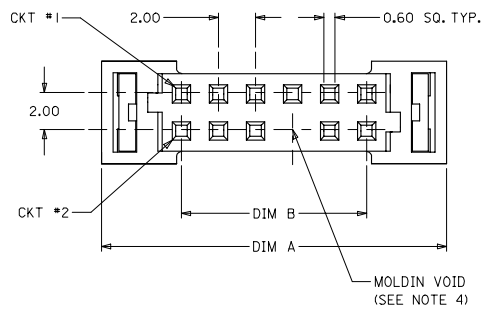
Click to view price, real time Inventory, Delivery & Lifecycle Information:

[Molex Connector Corporation](#)  
[0875687004](#)

For any questions, you can email us directly:  
[sales@integrated-circuit.com](mailto:sales@integrated-circuit.com)

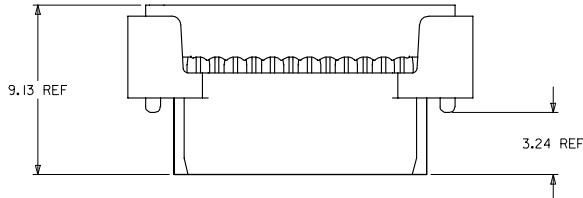


1. MATERIALS:  
HOUSING - THERMOPLASTIC, UL94V-0 BLACK  
TERMINAL - COPPER ALLOY
2. FINISHES  
PLATING 3 - 15µin (0.38µm) SELECTIVE GOLD IN CONTACT AREA  
AND 75 µin (1.88µm) TIN IN IDT AREA OVER  
50µin (1.25µm) NICKEL OVERALL  
PLATING 4 - 30µin (0.76µm) SELECTIVE GOLD IN CONTACT AREA  
AND 75 µin (1.88µm) TIN IN IDT AREA OVER  
50µin (1.25µm) NICKEL OVERALL
3. PRODUCT SPEC PS-87568-004 APPLIES
4. FOR ILLUSTRATION, CKT 12 IS SHOWN WITH MOLDIN VOID. TERMINALS FULLY LOADED. SEE TABLE FOR MOLDIN CONFIGURATION
5. PART MATES WITH ALL MILLIGRID HEADERS WITH MATING LENGTH BETWEEN 2.50mm AND 4.20mm
6. PART IS DESIGNED FOR 1.00mm PITCH FLAT CABLE, 7 STRANDS, AWG #28, UL2651 AND UL2678

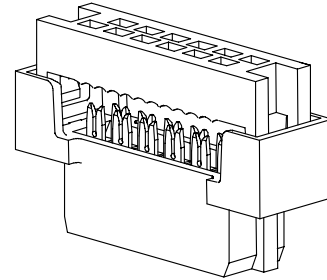


OBS. TIN/LEAD P/N EC NO. S2006-0732 2006/04/08 2006/04/08 2006/04/08	DESCRIPTION DRINKING CHROMIUM APPROX. 11M	QUALITY SYMBOLS ▽=0 ▽=0	GENERAL TOLERANCES (UNLESS SPECIFIED)		DIMENSION STYLE MM ONLY		SCALE NTS	DESIGN UNITS METRIC	THIRD ANGLE PROJECTION	
			4 PLACES ± --- ± ---	3 PLACES ± --- ± ---	DRAWN BY JAMES	DATE 1998/06/23	TITLE MGRID 2MM DUAL ROW IDT WITH MOLDIN VOID			
			2 PLACES ± 0.15 ± ---	1 PLACE ± --- ± ---	CHECKED BY SQUEK	DATE 1998/07/15	MOLEX INCORPORATED			
			ANGULAR ± 3 °		APPROVED BY SKTOH	DATE 1998/07/16	MATERIAL NO. SEE TABLE		DOCUMENT NO. SD-87568-005	SHEET NO. 1 OF 2
DRAFT WHERE APPLICABLE MUST REMAIN WITHIN DIMENSIONS			THIS DRAWING CONTAINS INFORMATION THAT IS PROPRIETARY TO MOLEX INCORPORATED AND SHOULD NOT BE USED WITHOUT WRITTEN PERMISSION							

10	9	8	7	6	5	4	3	2	1					
						ENGINEERING NUMBER	MOLDIN VOID POSITION	PLATING OPTION	CKT. SIZE	A	B	C	D	E
						87568-7003	20	3	44	50.65	42.00	48.90	45.65	44.55
						87568-7004		4						



CABLE LOADED ASSEMBLY  
(12 CKT SHOWN FOR ILLUSTRATION ONLY)



ISO VIEW  
(12 CKT SHOWN FOR ILLUSTRATION ONLY)

OBS. TIN/LEAD P/N EC. NO. S2006-0732 2006/06/03 CHK'D: MONG 2006/07/04 APPROVED: SKIN 2006/04/06 APPR: PLIM	QUALITY SYMBOLS ▽=0 ▽=0	GENERAL TOLERANCES (UNLESS SPECIFIED)		DIMENSION STYLE MM ONLY	SCALE NTS	DESIGN UNITS METRIC	THIRD ANGLE PROJECTION		
		4 PLACES ± --- ± --- 3 PLACES ± --- ± --- 2 PLACES ± 0.15 ± --- 1 PLACE ± --- ± ---	mm      INCH	DRAWN BY JAMES	DATE 1998/06/23	TITLE MGRID 2MM DUAL ROW IDT WITH MOLDIN VOID			
		ANGULAR ± 3 °		CHECKED BY SQUEK	DATE 1998/07/15	MOLEX INCORPORATED			
		DRAFT WHERE APPLICABLE MUST REMAIN WITHIN DIMENSIONS		APPROVED BY SKTOH	DATE 1998/07/16	MATERIAL NO. SEE TABLE	DOCUMENT NO. SD-87568-005	SHEET NO. 2 OF 2	