

Excellent Integrated System Limited

Stocking Distributor

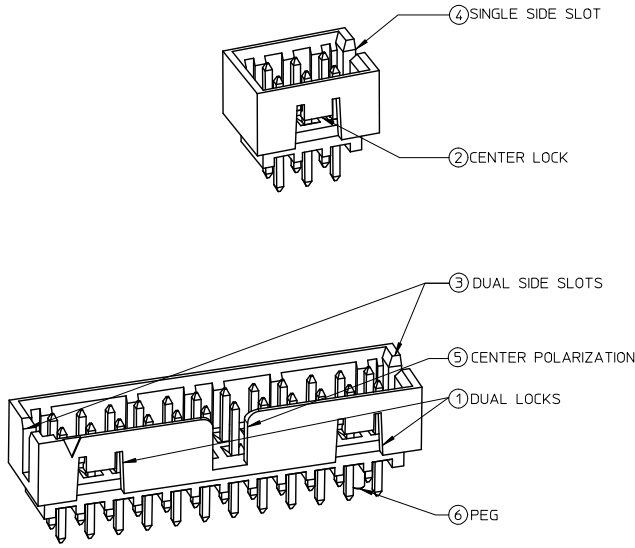
Click to view price, real time Inventory, Delivery & Lifecycle Information:

[Molex Connector Corporation](#)
[0878311029](#)

For any questions, you can email us directly:

sales@integrated-circuit.com

FEATURES SELECTION GUIDE



CIRCUIT SIZE	FEATURES						SHEET NO
	FRICTION LOCKS		SIDE SLOTS		⑤ CENTER POLARIZATION	⑥ PEG	
	① DUAL	② CENTER	③ DUAL	④ SINGLE			
4	N.A	N.A	YES	N.A	N.A	N.A	2 - 3
	N.A	YES	YES	N.A	N.A	N.A	
	N.A	YES	N.A	YES	N.A	N.A	
6	N.A	N.A	YES	N.A	N.A	N.A	4 - 5
	N.A	N.A	YES	N.A	N.A	YES	
	N.A	YES	YES	N.A	N.A	N.A	
	N.A	YES	YES	N.A	N.A	YES	
	N.A	YES	N.A	YES	N.A	N.A	
	N.A	YES	N.A	YES	N.A	YES	
8 TO 12	N.A	N.A	YES	N.A	YES	N.A	6 - 8
	N.A	N.A	YES	N.A	YES	YES	
	N.A	YES	YES	N.A	N.A	N.A	
	N.A	YES	YES	N.A	N.A	YES	
	N.A	YES	N.A	YES	N.A	N.A	
	N.A	YES	N.A	YES	N.A	YES	
14 TO 50	YES	N.A	YES	N.A	YES	N.A	9 - 13
	YES	N.A	YES	N.A	YES	YES	

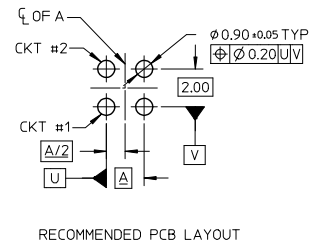
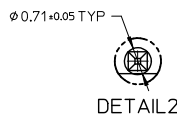
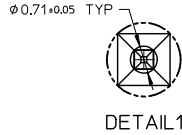
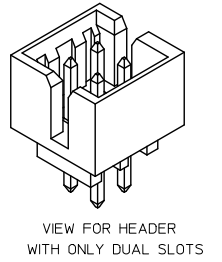
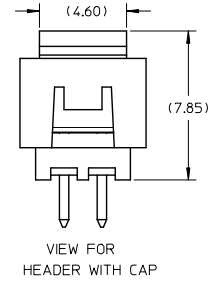
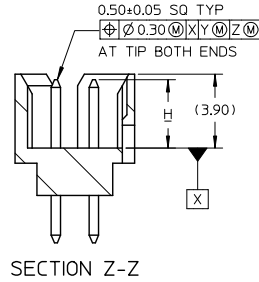
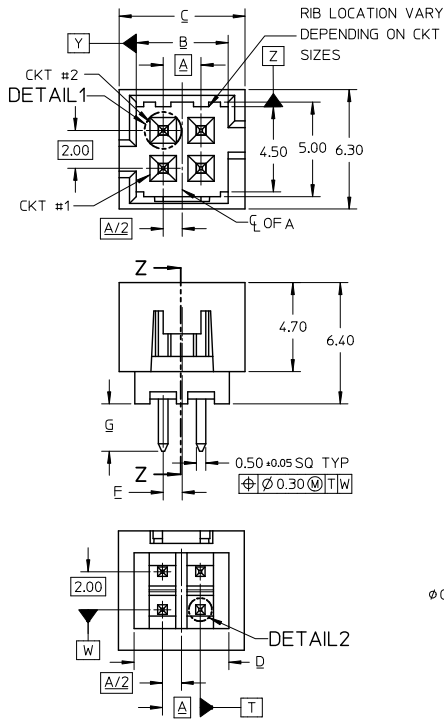
PACKAGING SPECIFICATION TABLE

TAPE AND REEL PACKAGING	PK-87831-300
TUBE STANDARD PACKAGING	PK-87831-001
TUBE NON-STANDARD PACKAGING FOR:	PK-87831-002
87831-0419 87831-0645	
87831-5141 87831-0632	
87831-0443 87831-5119	
87831-5241 87831-1011	
87831-5242 87831-1420	
87831-0643	

ADD PK TABLE EC NO: S2017-0022 DRAWN BY: 2016/07/04 CHECKED BY: 2016/07/27 APPR: KHLIM 2016/07/28 REV: A5	QUALITY SYMBOLS $\nabla=0$ $\nabla=0$ $\nabla=0$	GENERAL TOLERANCES (UNLESS SPECIFIED) mm INCH 4 PLACES ± --- ± --- 3 PLACES ± --- ± --- 2 PLACES ± 0.20 ± --- 1 PLACE ± --- ± --- 0 PLACE ± --- ± --- ANGULAR ± 3° DRAFT WHERE APPLICABLE MUST REMAIN WITHIN DIMENSIONS	DIMENSION STYLE MM ONLY DRAWN BY: G MENARLY DATE: 2015/04/15 CHECKED BY: CGOH DATE: 2015/06/29 APPROVED BY: KHLIM DATE: 2015/06/29	SCALE: NTS DESIGN UNITS: METRIC THIRD ANGLE PROJECTION	TITLE: MILLIGRID 2MM PITCH, THROUGH HOLE VERTICAL SHROUDED HEADER molex MATERIAL NO. DOCUMENT NO. SD-87831-0001	SHEET NO. 1 OF 13
	SEE TABLE THIS DRAWING CONTAINS INFORMATION THAT IS PROPRIETARY TO MOLEX INCORPORATED AND SHOULD NOT BE USED WITHOUT WRITTEN PERMISSION					
	SIZE: A3					
	INCORPORATED AND SHOULD NOT BE USED WITHOUT WRITTEN PERMISSION					

10 9 8 7 6 5 4 3 2 1

4 CIRCUITS



- NOTES:
- MATERIALS:
HOUSING: 30% GF, NYLON, UL94V-0, COLOR: BLACK
PIN: 0.50MM SQ PHOSPHOR BRONZE
 - FINISHES: REFER TO PLATING OPTIONS
 - PRODUCT SPECIFICATION: PS-87831-027
 - PACKAGING SPECIFICATION: SEE PACKAGING SPECS TABLE ON SHEET 1
 - MATES WITH: A. MOLEX CRIMP RECEPTACLE HOUSING: 51110 SERIES AND CRIMP TERMINAL: 50394 SERIES
B. MOLEX 2MM MILLIGRID DUAL ROW IDT: 87568 SERIES
C. MOLEX 2MM MILLIGRID DUAL ROW RECEPTACLE: 79107 (GOLD PLATED), 78787 (TIN PLATED)

EDIT NOTE 4 EC NO: S2017-0022 DRAWN: MENARLY 2016/07/04 CHKD: SCHEONG 2016/07/27 APPR: KHLIM 2016/07/28 REV A5	QUALITY SYMBOLS	GENERAL TOLERANCES (UNLESS SPECIFIED)	DIMENSION STYLE	SCALE	DESIGN UNITS	THIRD ANGLE PROJECTION
	$\nabla=0$ $\nabla=0$ $\nabla=0$	4 PLACES ± --- ± --- 3 PLACES ± --- ± --- 2 PLACES ± 0.20 ± --- 1 PLACE ± --- ± --- 0 PLACE ± --- ± ---	MM ONLY	NTS	METRIC	<input checked="" type="checkbox"/> THIRD ANGLE <input type="checkbox"/> FIRST ANGLE
	ANGULAR ± 3° DRAFT WHERE APPLICABLE MUST REMAIN WITHIN DIMENSIONS	DRAWN BY: GMENARLY 2015/04/15 CHECKED BY: CGOH 2015/06/29 APPROVED BY: KHLIM 2015/06/29	TITLE	MILLIGRID 2MM PITCH, THROUGH HOLE VERTICAL SHROUDED HEADER		
	MATERIAL NO. SEE TABLE SIZE A3 THIS DRAWING CONTAINS INFORMATION THAT IS PROPRIETARY TO MOLEX INCORPORATED AND SHOULD NOT BE USED WITHOUT WRITTEN PERMISSION	DOCUMENT NO. SD-87831-0001	SHEET NO. 2 OF 13			

10 9 8 7 6 5 4 3 2 1



10 9 8 7 6 5 4 3 2 1

4 CIRCUITS

CKT SIZE	ASSY P/N WITHOUT CAP IN TUBE	ASSY P/N WITH CAP IN TUBE	ASSY P/N WITH CAP IN T&R	PLATING OPTIONS	FRICTION LOCKS		SIDE SLOTS		CENTER POLARIZATION	PEG	DIMENSION							
					DUAL	CENTER	DUAL	SINGLE			A	B	C	D	E	F	G	H
4	87831-0419	N.A	N.A	1	N.A	N.A	YES	N.A	N.A	N.A	2.00	4.85	6.65	5.00	N.A	N.A	2.50	3.60±0.20
	87831-0420	N.A	N.A	2														
	87831-0421	N.A	N.A	3														
	87831-0436	N.A	N.A	4														
	87831-0441	87831-0456	N.A	2														
	87831-0442	N.A	N.A	3														
	87831-5141	N.A	N.A	2														
	87831-5142	N.A	N.A	3														
	87831-6141	N.A	N.A	2														
	87831-6142	N.A	N.A	3														
87831-6143	N.A	N.A	2	N.A	YES	N.A	YES	N.A	N.A	2.00	4.85	6.65	5.00	N.A	1.00	2.50	3.60±0.15 -0.30	
87831-0443	N.A	N.A	2															
87831-0444	N.A	N.A	3	N.A	YES	N.A	YES	N.A	N.A	N.A	2.00	4.85	6.65	5.00	N.A	1.00	2.50	3.60±0.15 -0.30

PLATING OPTIONS:

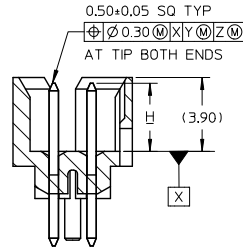
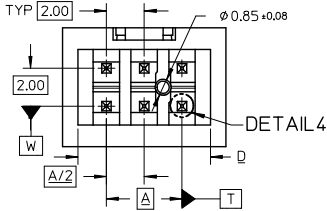
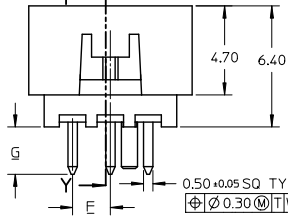
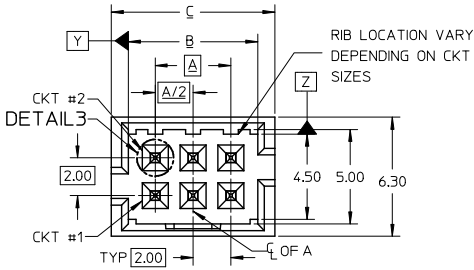
- 1 - 0.05-0.13um/2-5uin GOLD IN CONTACT AREA AND 1.88um/75uin MIN. MATTE TIN IN SOLDER TAIL AREA OVER 1.27um/50uin MIN. NICKEL OVERALL.
- 2 - 0.38um/15uin GOLD IN CONTACT AREA AND 1.88um/75uin MIN. MATTE TIN IN SOLDER TAIL AREA OVER 1.27um/50uin MIN. NICKEL OVERALL.
- 3 - 0.76um/30uin GOLD IN CONTACT AREA AND 1.88um/75uin MIN. MATTETIN IN SOLDER TAIL AREA OVER 1.27um/50uin MIN. NICKEL OVERALL.
- 4 - 2.50um/100uin MIN. MATTE TIN OVER 1.25um/50uin MIN. NICKEL OVERALL.

<p>SEE SHEET 1,2,4,6,8-10</p> <p>EC NO: S2017-0022</p> <p>DRAWN BY: 2016/07/04</p> <p>CHKD: SCHEONG 2016/07/27</p> <p>APPR: KHLIM 2016/07/28</p> <p>REV: A5</p>	QUALITY SYMBOLS	GENERAL TOLERANCES (UNLESS SPECIFIED)	DIMENSION STYLE	SCALE	DESIGN UNITS	THIRD ANGLE PROJECTION																		
	<p>√=0</p> <p>√=0</p> <p>√=0</p>	<table border="1"> <tr> <th></th> <th>mm</th> <th>INCH</th> </tr> <tr> <td>4 PLACES</td> <td>±---</td> <td>±---</td> </tr> <tr> <td>3 PLACES</td> <td>±---</td> <td>±---</td> </tr> <tr> <td>2 PLACES</td> <td>±0.20</td> <td>±---</td> </tr> <tr> <td>1 PLACE</td> <td>±---</td> <td>±---</td> </tr> <tr> <td>0 PLACE</td> <td>±---</td> <td>±---</td> </tr> </table>		mm	INCH	4 PLACES	±---	±---	3 PLACES	±---	±---	2 PLACES	±0.20	±---	1 PLACE	±---	±---	0 PLACE	±---	±---	MM ONLY	NTS	METRIC	
		mm	INCH																					
	4 PLACES	±---	±---																					
3 PLACES	±---	±---																						
2 PLACES	±0.20	±---																						
1 PLACE	±---	±---																						
0 PLACE	±---	±---																						
<p>ANGULAR ± 3°</p> <p>DRAFT WHERE APPLICABLE MUST REMAIN WITHIN DIMENSIONS</p>	<table border="1"> <tr> <td>DRAWN BY</td> <td>DATE</td> <td>TITLE</td> </tr> <tr> <td>GMENARLY</td> <td>2015/04/15</td> <td rowspan="3">MILLIGRID 2MM PITCH, THROUGH HOLE VERTICAL SHROUDED HEADER</td> </tr> <tr> <td>CHECKED BY</td> <td>DATE</td> </tr> <tr> <td>CGOH</td> <td>2015/06/29</td> </tr> <tr> <td>APPROVED BY</td> <td>DATE</td> <td></td> </tr> <tr> <td>KHLIM</td> <td>2015/06/29</td> <td></td> </tr> </table>	DRAWN BY	DATE	TITLE	GMENARLY	2015/04/15	MILLIGRID 2MM PITCH, THROUGH HOLE VERTICAL SHROUDED HEADER	CHECKED BY	DATE	CGOH	2015/06/29	APPROVED BY	DATE		KHLIM	2015/06/29		SEE TABLE	DOCUMENT NO.	SHEET NO.				
DRAWN BY	DATE	TITLE																						
GMENARLY	2015/04/15	MILLIGRID 2MM PITCH, THROUGH HOLE VERTICAL SHROUDED HEADER																						
CHECKED BY	DATE																							
CGOH	2015/06/29																							
APPROVED BY	DATE																							
KHLIM	2015/06/29																							
			SD-87831-0001	3 OF 13																				

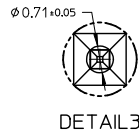
tb_frame_A3_P_AM_T
Rev. G 2012/01/11

9 8 7 6 5 4 3 2 1

6 CIRCUITS



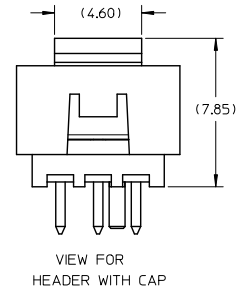
SECTION Y-Y



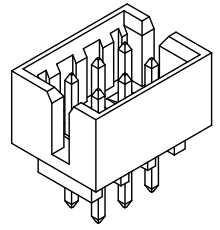
DETAIL 3



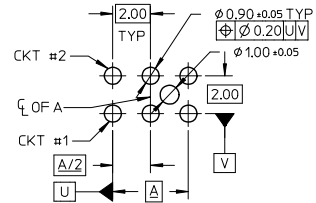
DETAIL 4



VIEW FOR HEADER WITH CAP



VIEW FOR HEADER WITH ONLY DUAL SLOTS



RECOMMENDED PCB LAYOUT

NOTES:

- MATERIALS:
HOUSING: 30% GF, NYLON, UL94V-0, COLOR: BLACK
PIN: 0.50MM SQ PHOSPHOR BRONZE
- FINISHES: REFER TO PLATING OPTIONS
- PRODUCT SPECIFICATION: PS-87831-027
- PACKAGING SPECIFICATION: SEE PACKAGING SPECS TABLE ON SHEET 1
- MATES WITH: A. MOLEX CRIMP RECEPTACLE HOUSING: 5110 SERIES AND CRIMP TERMINAL: 50394 SERIES
B. MOLEX 2MM MILLIGRID DUAL ROW IDT: 87568 SERIES
C. MOLEX 2MM MILLIGRID DUAL ROW RECEPTACLE: 79107 (GOLD PLATED), 78787 (TIN PLATED)

EDIT NOTE 4 EC NO: S2017-0022 DRAWN BY: GMENARLY 2016/07/06 CHECKED BY: CHYK-SCHONG 2016/07/27 APPR: KHL IM 2016/07/28 REV A5	QUALITY SYMBOLS	GENERAL TOLERANCES (UNLESS SPECIFIED)	DIMENSION STYLE	SCALE	DESIGN UNITS	THIRD ANGLE PROJECTION																																					
	$\sqrt{\text{---}}=0$ $\sqrt{\text{---}}=0$ $\sqrt{\text{---}}=0$	<table border="1"> <thead> <tr> <th></th> <th>mm</th> <th>INCH</th> </tr> </thead> <tbody> <tr> <td>4 PLACES</td> <td>±---</td> <td>±---</td> </tr> <tr> <td>3 PLACES</td> <td>±---</td> <td>±---</td> </tr> <tr> <td>2 PLACES</td> <td>±0.20</td> <td>±---</td> </tr> <tr> <td>1 PLACE</td> <td>±---</td> <td>±---</td> </tr> <tr> <td>0 PLACE</td> <td>±---</td> <td>±---</td> </tr> </tbody> </table>		mm	INCH	4 PLACES	±---	±---	3 PLACES	±---	±---	2 PLACES	±0.20	±---	1 PLACE	±---	±---	0 PLACE	±---	±---	<table border="1"> <thead> <tr> <th>DRAWN BY</th> <th>DATE</th> <th>TITLE</th> </tr> </thead> <tbody> <tr> <td>GMENARLY</td> <td>2015/04/15</td> <td>MILLIGRID 2MM PITCH, THROUGH HOLE VERTICAL SHROUDED HEADER</td> </tr> <tr> <td>CHECKED BY</td> <td>DATE</td> <td></td> </tr> <tr> <td>CGOH</td> <td>2015/06/29</td> <td></td> </tr> <tr> <td>APPROVED BY</td> <td>DATE</td> <td></td> </tr> <tr> <td>KHL IM</td> <td>2015/06/29</td> <td></td> </tr> </tbody> </table>	DRAWN BY	DATE	TITLE	GMENARLY	2015/04/15	MILLIGRID 2MM PITCH, THROUGH HOLE VERTICAL SHROUDED HEADER	CHECKED BY	DATE		CGOH	2015/06/29		APPROVED BY	DATE		KHL IM	2015/06/29		MM ONLY	NTS	METRIC	
		mm	INCH																																								
	4 PLACES	±---	±---																																								
3 PLACES	±---	±---																																									
2 PLACES	±0.20	±---																																									
1 PLACE	±---	±---																																									
0 PLACE	±---	±---																																									
DRAWN BY	DATE	TITLE																																									
GMENARLY	2015/04/15	MILLIGRID 2MM PITCH, THROUGH HOLE VERTICAL SHROUDED HEADER																																									
CHECKED BY	DATE																																										
CGOH	2015/06/29																																										
APPROVED BY	DATE																																										
KHL IM	2015/06/29																																										
DESCRIPTION	ANGULAR ± 3°	DRAFT WHERE APPLICABLE MUST REMAIN WITHIN DIMENSIONS	SEE TABLE	MATERIAL NO.	DOCUMENT NO.	SHEET NO.																																					
REV			SIZE A3		SD-87831-0001	4 OF 13																																					



10 9 8 7 6 5 4 3 2 1

6 CIRCUITS

CKT SIZE	ASSY P/N WITHOUT CAP IN TUBE	ASSY P/N WITH CAP IN TUBE	ASSY P/N WITH CAP IN T&R	PLATING OPTIONS	FRICTION LOCKS		SIDE SLOTS		CENTER POLARIZATION	PEG	DIMENSION							
					DUAL	CENTER	DUAL	SINGLE			A	B	C	D	E	F	G	H
6	87831-0619	N.A	N.A	1	N.A	N.A	YES	N.A	N.A	N.A	4.00	6.85	8.65	7.00	N.A	N.A	2.50	3.60±0.20
	87831-0620	N.A	N.A	2														
	87831-0621	N.A	N.A	3														
	87831-0636	N.A	N.A	4	N.A	N.A	YES	N.A	N.A	YES						N.A	2.50	
	87831-0628	N.A	N.A	2														
	87831-0629	N.A	N.A	3	2.00	2.50	3.50	2.80	2.50	3.60 ^{+0.15} _{-0.10}								
	87831-0641	N.A	N.A	2														
	87831-0642	N.A	87831-5552	3														
	87831-5241	N.A	N.A	2														
	87831-5242	N.A	N.A	3														
87831-6241	N.A	N.A	2															
87831-6242	N.A	N.A	3															
87831-0643	N.A	N.A	2															
87831-0644	N.A	N.A	3															
87831-0645	N.A	N.A	2	N.A							YES	N.A	YES	N.A	YES	2.50		
87831-0646	N.A	N.A	3															
87831-0632	N.A	N.A	2															
87831-5119	N.A	N.A	1	N.A	N.A	YES	N.A	YES	N.A	N.A	2.50	3.60±0.20						

PLATING OPTIONS:

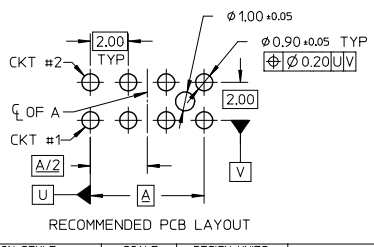
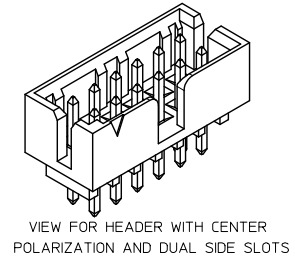
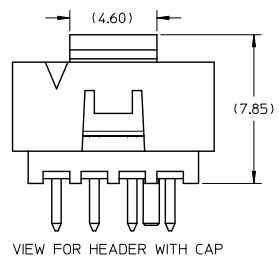
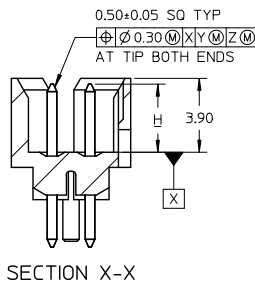
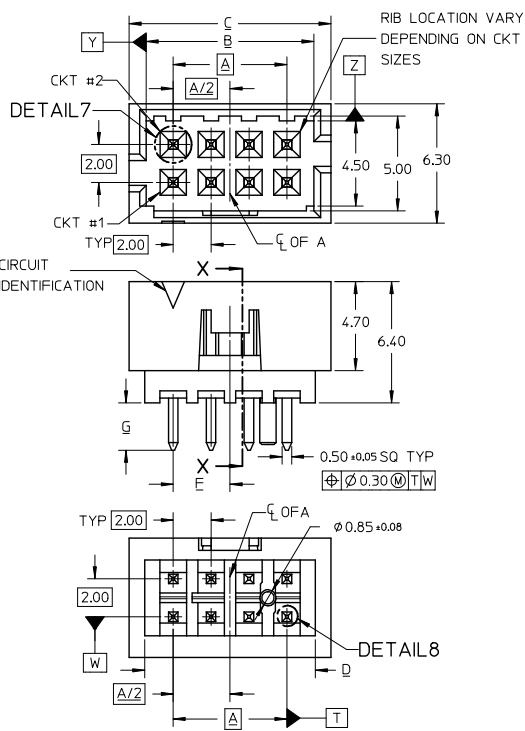
- 1 - 0.05-0.13um/2-5uin GOLD IN CONTACT AREA AND 1.88um/75uin MIN. MATTE TIN IN SOLDER TAIL AREA OVER 1.27um/50uin MIN. NICKEL OVERALL.
- 2 - 0.38um/15uin GOLD IN CONTACT AREA AND 1.88um/75uin MIN. MATTE TIN IN SOLDER TAIL AREA OVER 1.27um/50uin MIN. NICKEL OVERALL.
- 3 - 0.76um/30uin GOLD IN CONTACT AREA AND 1.88um/75uin MIN. MATTE TIN IN SOLDER TAIL AREA OVER 1.27um/50uin MIN. NICKEL OVERALL.
- 4 - 2.50um/100uin MIN. MATTE TIN OVER 1.25um/50uin MIN. NICKEL OVERALL.

SEE SHEET 1.2.4.6.8-10 EC NO: S2017-0022 DRAWN BY: 2016/07/04 CHKD: SCHEONG 2016/07/27 APPR: KHLIM 2016/07/28	QUALITY SYMBOLS	GENERAL TOLERANCES (UNLESS SPECIFIED)	DIMENSION STYLE	SCALE	DESIGN UNITS	THIRD ANGLE PROJECTION
	$\nabla=0$ $\nabla=0$ $\nabla=0$	mm INCH 4 PLACES ± --- ± --- 3 PLACES ± --- ± --- 2 PLACES ± 0.20 ± --- 1 PLACE ± --- ± --- 0 PLACE ± --- ± --- ANGULAR ± 3°	MM ONLY	NTS	METRIC	MILLIGRID 2MM PITCH, THROUGH HOLE VERTICAL SHROUDED HEADER
	DRAWN BY: GMENARLY CHECKED BY: CGOH APPROVED BY: KHLIM	DATE: 2015/04/15 DATE: 2015/06/29 DATE: 2015/06/29	MATERIAL NO. SEE TABLE	DOCUMENT NO. SD-87831-0001	SHEET NO. 5 OF 13	
	DRAFT WHERE APPLICABLE MUST REMAIN WITHIN DIMENSIONS					THIS DRAWING CONTAINS INFORMATION THAT IS PROPRIETARY TO MOLEX INCORPORATED AND SHOULD NOT BE USED WITHOUT WRITTEN PERMISSION

1b_frame_A3_P_AM_T Rev. G 2012/01/11 9 8 7 6 5 4 3 2 1

10 9 8 7 6 5 4 3 2 1

8 TO 12 CIRCUITS



- NOTES:
- MATERIALS:
HOUSING: 30% GF, NYLON, UL94V-0, COLOR: BLACK
PIN: 0.50MM SQ PHOSPHOR BRONZE
 - FINISHES: REFER TO PLATING OPTIONS
 - PRODUCT SPECIFICATION: PS-87831-027
 - PACKAGING SPECIFICATION: SEE PACKAGING SPECS TABLE ON SHEET 1
 - MATES WITH: A. MOLEX CRIMP RECEPTACLE HOUSING: 51110 SERIES AND CRIMP TERMINAL: 50394 SERIES
B. MOLEX 2MM MILLIGRID DUAL ROW IDT: 87568 SERIES
C. MOLEX 2MM MILLIGRID DUAL ROW RECEPTACLE: 79107 (GOLD PLATED), 78787 (TIN PLATED)

EDIT NOTE 4 EC NO: S2017-0022 DRAWN: MENARLY 2016/07/04 CHKD: SCHEONG 2016/07/27 APPR: KHLIM 2016/07/28 REV A5	QUALITY SYMBOLS	GENERAL TOLERANCES (UNLESS SPECIFIED)	DIMENSION STYLE	SCALE	DESIGN UNITS	THIRD ANGLE PROJECTION
	$\nabla=0$ $\nabla=0$ $\nabla=0$	mm INCH 4 PLACES ± --- ± --- 3 PLACES ± --- ± --- 2 PLACES ± 0.20 ± --- 1 PLACE ± --- ± --- 0 PLACE ± --- ± --- ANGULAR ± 3°	MM ONLY	NTS	METRIC	
	DRAFT WHERE APPLICABLE MUST REMAIN WITHIN DIMENSIONS	DRAWN BY: GMENARLY 2015/04/15 CHECKED BY: CGOH 2015/06/29 APPROVED BY: KHLIM 2015/06/29	TITLE			
		MATERIAL NO. SEE TABLE SIZE A3 THIS DRAWING CONTAINS INFORMATION THAT IS PROPRIETARY TO MOLEX INCORPORATED AND SHOULD NOT BE USED WITHOUT WRITTEN PERMISSION	DOCUMENT NO. SD-87831-0001 SHEET NO. 6 OF 13	MILLIGRID 2MM PITCH, THROUGH HOLE VERTICAL SHROUDED HEADER molex		

9 8 7 6 5 4 3 2 1



10 9 8 7 6 5 4 3 2 1

10 TO 12 CIRCUITS

CKT SIZE	ASSY P/N WITHOUT CAP IN TUBE	ASSY P/N WITH CAP IN TUBE	ASSY P/N WITH CAP IN T&R	PLATING OPTIONS	FRICTION LOCKS				SIDE SLOTS		CENTER POLARIZATION	PEG	DIMENSION							
					DUAL	CENTER	DUAL	SINGLE	A	B			C	D	E	F	G	H		
10	87831-1019	N.A	N.A	1									8.00	10.85	12.65	11.00	N.A	N.A	2.50	3.60±0.20
	87831-1020	N.A	N.A	2																
	87831-1021	N.A	N.A	3	N.A	N.A	YES	N.A	YES	N.A										
	87831-1036	N.A	N.A	4																
	87831-1010	N.A	N.A	2																
	87831-1011	N.A	N.A	3	N.A	N.A	YES	N.A	YES	N.A										
	87831-1028	N.A	N.A	2																
	87831-1029	N.A	87831-5557	3	N.A	N.A	YES	N.A	YES	YES										
	87831-1035	N.A	N.A	3	N.A	N.A	YES	N.A	YES	YES										
	87831-1041	N.A	N.A	2																
	87831-1042	N.A	87831-5553	3	N.A	YES	YES	N.A	N.A	N.A										
	87831-1032	N.A	N.A	2	N.A	YES	YES	N.A	N.A	YES										
	87831-1043	N.A	N.A	2																
	87831-1044	N.A	N.A	3	N.A	YES	N.A	YES	N.A	N.A										
87831-1045	N.A	N.A	2																	
87831-1046	N.A	N.A	3	N.A	YES	N.A	YES	N.A	YES											
12	87831-1219	N.A	N.A	1								10.00	12.85	14.65	13.00	N.A	N.A	2.50	3.60±0.20	
	87831-1220	N.A	87831-5556	2																
	87831-1221	N.A	N.A	3	N.A	N.A	YES	N.A	YES	N.A										
	87831-1236	N.A	N.A	4																
	87831-1228	N.A	N.A	2																
	87831-1229	N.A	87831-5558	3	N.A	N.A	YES	N.A	YES	YES										
	87831-1241	N.A	N.A	2																
	87831-1242	N.A	N.A	3	N.A	YES	YES	N.A	N.A	N.A										
	87831-1255	87831-1256	N.A	2	N.A	YES	YES	N.A	N.A	N.A										
	87831-1232	N.A	N.A	2	N.A	YES	YES	N.A	N.A	YES										
	87831-1243	N.A	N.A	2																
	87831-1244	N.A	N.A	3	N.A	YES	N.A	YES	N.A	N.A										
	87831-1245	N.A	N.A	2																
	87831-1246	N.A	N.A	3	N.A	YES	N.A	YES	N.A	YES										

PLATING OPTIONS:

- 1 - 0.05-0.13um/2-5uin GOLD IN CONTACT AREA AND 1.88um/75uin MIN. MATTE TIN IN SOLDER TAIL AREA OVER 1.27um/50uin MIN. NICKEL OVERALL.
- 2 - 0.38um/15uin GOLD IN CONTACT AREA AND 1.88um/75uin MIN. MATTE TIN IN SOLDER TAIL AREA OVER 1.27um/50uin MIN. NICKEL OVERALL.
- 3 - 0.76um/30uin GOLD IN CONTACT AREA AND 1.88um/75uin MIN. MATTE TIN IN SOLDER TAIL AREA OVER 1.27um/50uin MIN. NICKEL OVERALL.
- 4 - 2.50um/100uin MIN. MATTE TIN OVER 1.25um/50uin MIN. NICKEL OVERALL.

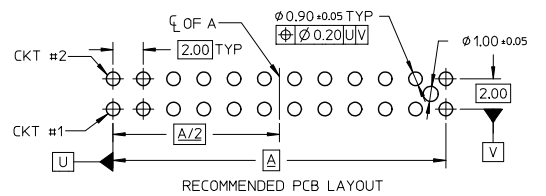
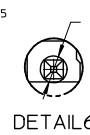
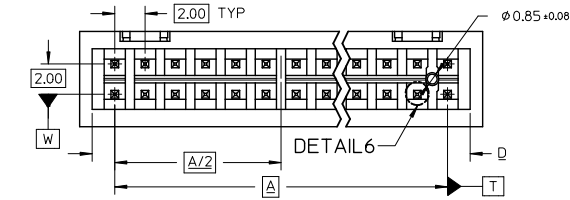
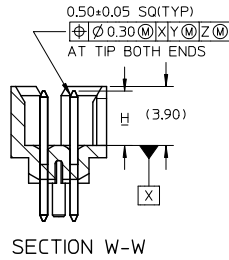
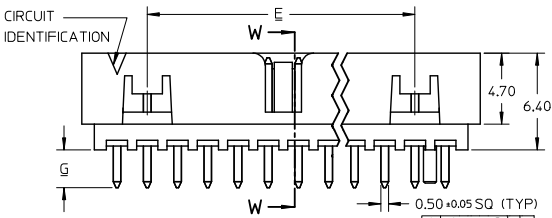
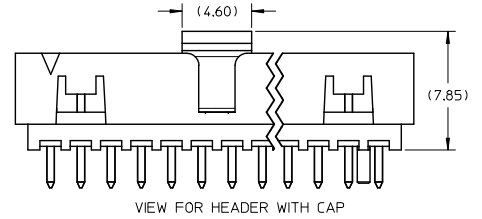
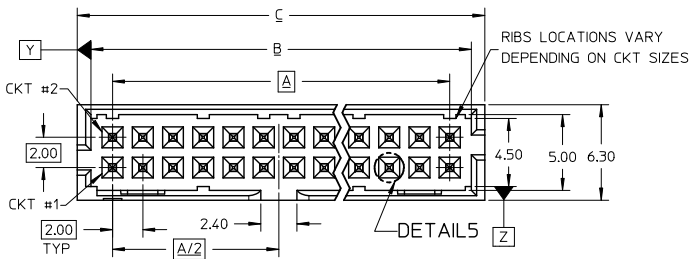
ADD: 87831-5557-5558 EC NO: S2017-0022 DRAWN BY: CHYK-SCHONG CHECKED BY: KHLIM APPR: KHLIM DATE: 2016/07/27 DATE: 2016/07/28	QUALITY SYMBOLS ∇=0 ∇=0 ∇=0	GENERAL TOLERANCES (UNLESS SPECIFIED)		DIMENSION STYLE		SCALE	DESIGN UNITS	THIRD ANGLE PROJECTION		
				MM ONLY		NTS	METRIC			
		4 PLACES ± --- ± ---		DRAWN BY: GMENARLY DATE: 2015/04/15		TITLE: MILLIGRID				
		3 PLACES ± --- ± ---		CHECKED BY: CGOH DATE: 2015/06/29		2MM PITCH, THROUGH HOLE				
2 PLACES ± 0.20 ± ---		APPROVED BY: KHLIM DATE: 2015/06/29		VERTICAL SHROUDED HEADER						
1 PLACE ± --- ± ---		MATERIAL NO. SEE TABLE		DOCUMENT NO. SD-87831-0001						
0 PLACE ± --- ± ---		DRAFT WHERE APPLICABLE MUST REMAIN WITHIN DIMENSIONS		SIZE: A3		THIS DRAWING CONTAINS INFORMATION THAT IS PROPRIETARY TO MOLEX INCORPORATED AND SHOULD NOT BE USED WITHOUT WRITTEN PERMISSION				

tb_frame_A3_P_AM_T
Rev. G 2012/01/11

9 8 7 6 5 4 3 2 1

10 9 8 7 6 5 4 3 2 1

14 TO 50 CIRCUITS



NOTES:

- MATERIALS:
HOUSING: 30% GF, NYLON, UL94V-0, COLOR: BLACK
PIN: 0.50MM SQ PHOSPHOR BRONZE
- FINISHES: REFER TO PLATING OPTIONS
- PRODUCT SPECIFICATION: PS-87831-027
- PACKAGING SPECIFICATION: SEE PACKAGING SPECS TABLE ON SHEET 1
- MATES WITH: A. MOLEX CRIMP RECEPTACLE HOUSING: 51110 SERIES AND CRIMP TERMINAL: 50394 SERIES
B. MOLEX 2MM MILLIGRID DUAL ROW IDT: 87568 SERIES
C. MOLEX 2MM MILLIGRID DUAL ROW RECEPTACLE: 79107 (GOLD PLATED), 78787 (TIN PLATED)

EDIT NOTE 4 EC NO: S2017-0022 DRAWN BY: GMENARLY CHKD: SCHEONG APPR: KHLIM 2016/07/27 2016/07/28	QUALITY SYMBOLS √=0 √=0 √=0	GENERAL TOLERANCES (UNLESS SPECIFIED)		DIMENSION STYLE MM ONLY		SCALE NTS	DESIGN UNITS METRIC	THIRD ANGLE PROJECTION
		4 PLACES ± --- ± --- 3 PLACES ± --- ± --- 2 PLACES ± 0.20 ± --- 1 PLACE ± --- ± --- 0 PLACE ± --- ± --- ANGULAR ± 3°	DRAWN BY: GMENARLY CHECKED BY: CGOH APPROVED BY: KHLIM DATE: 2015/04/15 DATE: 2015/06/29 DATE: 2015/06/29	TITLE MILLIGRID 2MM PITCH, THROUGH HOLE VERTICAL SHROUDED HEADER		MATERIAL NO. SEE TABLE		DOCUMENT NO. SD-87831-0001
DRAFT WHERE APPLICABLE MUST REMAIN WITHIN DIMENSIONS		THIS DRAWING CONTAINS INFORMATION THAT IS PROPRIETARY TO MOLEX INCORPORATED AND SHOULD NOT BE USED WITHOUT WRITTEN PERMISSION						

9 8 7 6 5 4 3 2 1



10 9 8 7 6 5 4 3 2 1

14 TO 20 CIRCUITS

CKT SIZE	ASSY P/N WITHOUT CAP IN TUBE	ASSY P/N WITH CAP IN TUBE	ASSY P/N WITH CAP IN T&R	PLATING OPTIONS	FRICTION LOCKS		SIDE SLOTS		CENTER POLARIZATION	PEG	DIMENSION							
					DUAL	CENTER	DUAL	SINGLE			A	B	C	D	E	F	G	H
14	87831-1419	N.A	N.A	1							12.00	14.85	16.65	15.00	8.00	N.A	2.50	3.60±0.20
	87831-1420	87831-1430	87831-5554	2	YES	N.A	YES	N.A	YES	N.A								
	87831-1421	N.A	N.A	3														
	87831-1436	N.A	N.A	4														
	87831-1428	N.A	N.A	2	YES	N.A	YES	N.A	YES	YES								
	87831-1429	N.A	N.A	3	YES	N.A	YES	N.A	YES	YES								
	87831-1435	N.A	N.A	3	YES	N.A	YES	N.A	YES	YES								
	87831-1410	N.A	N.A	2	YES	N.A	YES	N.A	YES	N.A								
87831-1411	N.A	N.A	3															
16	87831-1619	N.A	N.A	1							14.00	16.85	18.65	17.00	10.00	N.A	2.50	3.60±0.20
	87831-1620	N.A	N.A	2	YES	N.A	YES	N.A	YES	N.A								
	87831-1621	N.A	N.A	3														
	87831-1636	N.A	N.A	4														
	87831-1628	N.A	N.A	2	YES	N.A	YES	N.A	YES	YES								
	87831-1629	N.A	87831-5559	3	YES	N.A	YES	N.A	YES	YES								
87831-1635	N.A	N.A	3	YES	N.A	YES	N.A	YES	YES									
18	87831-1819	N.A	N.A	1							16.00	18.85	20.65	19.00	12.00	N.A	2.50	3.60±0.20
	87831-1820	N.A	N.A	2	YES	N.A	YES	N.A	YES	N.A								
	87831-1821	N.A	N.A	3														
	87831-1836	N.A	N.A	4														
	87831-1828	N.A	N.A	2	YES	N.A	YES	N.A	YES	YES								
	87831-1829	N.A	N.A	3	YES	N.A	YES	N.A	YES	YES								
20	87831-2019	N.A	N.A	1							18.00	20.85	22.65	21.00	14.00	N.A	2.50	3.60±0.20
	87831-2020	N.A	N.A	2	YES	N.A	YES	N.A	YES	N.A								
	87831-2021	N.A	N.A	3														
	87831-2036	N.A	N.A	4														
	87831-2028	N.A	N.A	2	YES	N.A	YES	N.A	YES	YES								
	87831-2029	N.A	N.A	3	YES	N.A	YES	N.A	YES	YES								
	87831-2035	N.A	N.A	3	YES	N.A	YES	N.A	YES	YES								
	87831-2010	N.A	N.A	2	YES	N.A	YES	N.A	YES	N.A								
87831-2011	N.A	N.A	3															

PLATING OPTIONS:

- 1 - 0.05-0.13um/2-5uin GOLD IN CONTACT AREA AND 1.88um/75uin MIN. MATTE TIN IN SOLDER TAIL AREA OVER 1.27um/50uin MIN. NICKEL OVERALL.
- 2 - 0.38um/15uin GOLD IN CONTACT AREA AND 1.88um/75uin MIN. MATTE TIN IN SOLDER TAIL AREA OVER 1.27um/50uin MIN. NICKEL OVERALL.
- 3 - 0.76um/30uin GOLD IN CONTACT AREA AND 1.88um/75uin MIN. MATTE TIN IN SOLDER TAIL AREA OVER 1.27um/50uin MIN. NICKEL OVERALL.
- 4 - 2.50um/100uin MIN. MATTE TIN OVER 1.25um/50uin MIN. NICKEL OVERALL.

ADD 87831-5559 EC NO. S2017-0022 DRAWN BY: CHYK-SCHONG CHKD: KHLIM APPR: KHLIM 2016/07/27 2016/07/28	QUALITY SYMBOLS ∇=0 ∇=0 ∇=0	GENERAL TOLERANCES (UNLESS SPECIFIED)		DIMENSION STYLE		SCALE	DESIGN UNITS	THIRD ANGLE PROJECTION	
				MM ONLY		NTS	METRIC		
		4 PLACES ± --- ± ---		DRAWN BY: GMENARLY DATE: 2015/04/15		TITLE: MILLIGRID			
		3 PLACES ± --- ± ---		CHECKED BY: CGOH DATE: 2015/06/29		2MM PITCH, THROUGH HOLE			
2 PLACES ± 0.20 ± ---		APPROVED BY: KHLIM DATE: 2015/06/29		VERTICAL SHROUDED HEADER					
1 PLACE ± --- ± ---		MATERIAL NO. SEE TABLE		DOCUMENT NO. SD-87831-0001					
0 PLACE ± --- ± ---		DRAFT WHERE APPLICABLE MUST REMAIN WITHIN DIMENSIONS		SHEET NO. 10 OF 13					
ANGULAR ± 3°		THIS DRAWING CONTAINS INFORMATION THAT IS PROPRIETARY TO MOLEX INCORPORATED AND SHOULD NOT BE USED WITHOUT WRITTEN PERMISSION							

9 8 7 6 5 4 3 2 1



10 9 8 7 6 5 4 3 2 1

22 TO 30 CIRCUITS

CKT SIZE	ASSY P/N WITHOUT CAP IN TUBE	ASSY P/N WITH CAP IN TUBE	ASSY P/N WITH CAP IN T&R	PLATING OPTIONS	FRICITION LOCKS				SIDE SLOTS		CENTER POLARIZATION	PEG	DIMENSION							
					DUAL	CENTER	DUAL	SINGLE	A	B			C	D	E	F	G	H		
22	87831-2219	N.A	N.A	1	YES	N.A	YES	N.A	YES	N.A	20.00	22.85	24.65	23.00	16.00	N.A	2.50	3.60±0.20		
	87831-2220	N.A	N.A	2																
	87831-2221	N.A	N.A	3																
	87831-2236	N.A	N.A	4																
	87831-2228	N.A	N.A	2																
24	87831-2229	N.A	N.A	3	YES	N.A	YES	N.A	YES	N.A	22.00	24.85	26.65	25.00	18.00	N.A	2.50	3.60±0.20		
	87831-2419	N.A	N.A	1																
	87831-2420	N.A	N.A	2																
	87831-2421	N.A	N.A	3																
	87831-2436	N.A	N.A	4																
26	87831-2428	N.A	N.A	2	YES	N.A	YES	N.A	YES	YES	24.00	26.85	28.65	27.00	20.00	N.A	2.50	3.60±0.20		
	87831-2429	N.A	N.A	3																
	87831-2435	N.A	N.A	3																
	87831-2410	N.A	N.A	2																
	87831-2619	N.A	N.A	1																
28	87831-2620	87831-2630	87831-5555	2	YES	N.A	YES	N.A	YES	N.A	26.00	28.85	30.65	29.00	22.00	N.A	2.50	3.60±0.20		
	87831-2621	N.A	N.A	3																
	87831-2636	N.A	N.A	4																
	87831-2628	N.A	N.A	2																
	87831-2629	N.A	N.A	3																
30	87831-2610	N.A	N.A	2	YES	N.A	YES	N.A	YES	N.A	28.00	30.85	32.65	31.00	24.00	N.A	2.50	3.60±0.20		
	87831-2819	N.A	N.A	1																
	87831-2820	N.A	N.A	2																
	87831-2821	N.A	N.A	3																
	87831-2836	N.A	N.A	4																
30	87831-2828	N.A	N.A	2	YES	N.A	YES	N.A	YES	YES	28.00	30.85	32.65	31.00	24.00	N.A	2.50	3.60±0.20		
	87831-2829	N.A	N.A	3																
	87831-3019	N.A	N.A	1																
	87831-3020	N.A	N.A	2																
	87831-3021	N.A	N.A	3																
30	87831-3036	N.A	N.A	4	YES	N.A	YES	N.A	YES	YES	28.00	30.85	32.65	31.00	24.00	N.A	2.50	3.60±0.20		
	87831-3028	N.A	N.A	2																
	87831-3029	N.A	N.A	3																
	87831-3035	N.A	N.A	3																
	87831-3010	87831-3030	87831-3050	2																

- PLATING OPTIONS:
- 1 - 0.05-0.13um/2-5uin GOLD IN CONTACT AREA AND 1.88um/75uin MIN. MATTE TIN IN SOLDER TAIL AREA OVER 1.27um/50uin MIN. NICKEL OVERALL.
 - 2 - 0.38um/15uin GOLD IN CONTACT AREA AND 1.88um/75uin MIN. MATTE TIN IN SOLDER TAIL AREA OVER 1.27um/50uin MIN. NICKEL OVERALL.
 - 3 - 0.76um/30uin GOLD IN CONTACT AREA AND 1.88um/75uin MIN. MATTE TIN IN SOLDER TAIL AREA OVER 1.27um/50uin MIN. NICKEL OVERALL.
 - 4 - 2.50um/100uin MIN. MATTE TIN OVER 1.25um/50uin MIN. NICKEL OVERALL.

SEE SHEET 1.2.4.6.8-10
 EC NO: S2017-0022
 DRAWN BY: CHYK-SCHONG
 CHECKED BY: KHLIM
 DATE: 2016/07/28
 APPROVED BY: KHLIM
 DATE: 2016/07/28

QUALITY SYMBOLS	GENERAL TOLERANCES (UNLESS SPECIFIED)	
	mm	INCH
∇=0	4 PLACES ±---	±---
∇=0	3 PLACES ±---	±---
∇=0	2 PLACES ±0.20	±---
∇=0	1 PLACE ±---	±---
∇=0	0 PLACE ±---	±---

DIMENSION STYLE MM ONLY		SCALE NTS	DESIGN UNITS METRIC	THIRD ANGLE PROJECTION
DRAWN BY GMENARLY	DATE 2015/04/15	TITLE MILLIGRID 2MM PITCH, THROUGH HOLE VERTICAL SHROUDED HEADER		
CHECKED BY CGOH	DATE 2015/06/29			
APPROVED BY KHLIM	DATE 2015/06/29			
MATERIAL NO. SEE TABLE		DOCUMENT NO. SD-87831-0001		SHEET NO. 11 OF 13

THIS DRAWING CONTAINS INFORMATION THAT IS PROPRIETARY TO MOLEX INCORPORATED AND SHOULD NOT BE USED WITHOUT WRITTEN PERMISSION

ib_frame_A3_P_AM_T Rev. G 2012/01/11



10 9 8 7 6 5 4 3 2 1

32 TO 40 CIRCUITS

F	CKT SIZE	ASSY P/N WITHOUT CAP IN TUBE	ASSY P/N WITH CAP IN TUBE	ASSY P/N WITH CAP IN T&R	PLATING OPTIONS	FRICTION LOCKS		SIDE SLOTS		CENTER POLARIZATION	PEG	DIMENSION							
						DUAL	CENTER	DUAL	SINGLE			A	B	C	D	E	F	G	H
32	87831-3219	N.A	N.A	1	YES	N.A	YES	N.A	YES	N.A	30.00	32.85	34.65	33.00	26.00	N.A	2.50	3.60±0.20	
	87831-3220	N.A	N.A	2															
	87831-3221	N.A	N.A	3															
	87831-3236	N.A	N.A	4															
	87831-3228	N.A	N.A	2															
34	87831-3419	N.A	N.A	1	YES	N.A	YES	N.A	YES	N.A	32.00	34.85	36.65	35.00	28.00	N.A	2.50	3.60±0.20	
	87831-3420	N.A	N.A	2															
	87831-3421	N.A	N.A	3															
	87831-3436	N.A	N.A	4															
	87831-3428	N.A	N.A	2															
36	87831-3619	N.A	N.A	1	YES	N.A	YES	N.A	YES	N.A	34.00	36.85	38.65	37.00	30.00	N.A	2.50	3.60±0.20	
	87831-3620	N.A	N.A	2															
	87831-3621	N.A	N.A	3															
	87831-3636	N.A	N.A	4															
	87831-3628	N.A	N.A	2															
38	87831-3819	N.A	N.A	1	YES	N.A	YES	N.A	YES	N.A	36.00	38.85	40.65	39.00	32.00	N.A	2.50	3.60±0.20	
	87831-3820	N.A	N.A	2															
	87831-3821	N.A	N.A	3															
	87831-3836	N.A	N.A	4															
	87831-3828	N.A	N.A	2															
40	87831-4019	N.A	N.A	1	YES	N.A	YES	N.A	YES	N.A	38.00	40.85	42.65	41.00	34.00	N.A	2.50	3.60±0.20	
	87831-4020	N.A	N.A	2															
	87831-4021	N.A	N.A	3															
	87831-4036	N.A	N.A	4															
	87831-4028	N.A	N.A	2															

PLATING OPTIONS:

- 1 - 0.05-0.13um/2-5uin GOLD IN CONTACT AREA AND 1.88um/75uin MIN. MATTE TIN IN SOLDER TAIL AREA OVER 1.27um/50uin MIN. NICKEL OVERALL.
- 2 - 0.38um/15uin GOLD IN CONTACT AREA AND 1.88um/75uin MIN. MATTE TIN IN SOLDER TAIL AREA OVER 1.27um/50uin MIN. NICKEL OVERALL.
- 3 - 0.76um/30uin GOLD IN CONTACT AREA AND 1.88um/75uin MIN. MATTE TIN IN SOLDER TAIL AREA OVER 1.27um/50uin MIN. NICKEL OVERALL.
- 4 - 2.50um/100uin MIN. MATTE TIN OVER 1.25um/50uin MIN. NICKEL OVERALL.

SEE SHEET 12.4.6.8-10 EC. NO. S2017-0022 DRAWN BY: IDRW:HEWARY 2016/07/04 CHKD: SCHEONG 2016/07/27 APPR: KHLIM 2016/07/28 REV: A5	QUALITY SYMBOLS ∇=0 ∇=0 ∇=0	GENERAL TOLERANCES (UNLESS SPECIFIED) 4 PLACES ± --- ± --- 3 PLACES ± --- ± --- 2 PLACES ± 0.20 ± --- 1 PLACE ± --- ± --- 0 PLACE ± --- ± --- ANGULAR ± 3°	DIMENSION STYLE MM ONLY DRAWN BY: G MENARLY DATE: 2015/04/15 CHECKED BY: CGOH DATE: 2015/06/29 APPROVED BY: KHLIM DATE: 2015/06/29	SCALE: NTS DESIGN UNITS: METRIC THIRD ANGLE PROJECTION	TITLE: MILLIGRID 2MM PITCH, THROUGH HOLE VERTICAL SHROUDED HEADER molex MATERIAL NO. SEE TABLE DOCUMENT NO. SD-87831-0001	SHEET NO. 12 OF 13
	DRAFT WHERE APPLICABLE MUST REMAIN WITHIN DIMENSIONS					
	THIS DRAWING CONTAINS INFORMATION THAT IS PROPRIETARY TO MOLEX INCORPORATED AND SHOULD NOT BE USED WITHOUT WRITTEN PERMISSION					
	SIZE: A3					

9 8 7 6 5 4 3 2 1

10 9 8 7 6 5 4 3 2 1

42 TO 50 CIRCUITS

CKT SIZE	ASSY P/N WITHOUT CAP IN TUBE	ASSY P/N WITH CAP IN TUBE	ASSY P/N WITH CAP IN T&R	PLATING OPTIONS	FRICTION LOCKS				SIDE SLOTS		CENTER POLARIZATION	PEG	DIMENSION										
					DUAL	CENTER	DUAL	SINGLE	A	B			C	D	E	F	G	H					
42	87831-4219	N.A	N.A	1									40.00	42.85	44.65	43.00	36.00	N.A	2.50	3.60±0.20			
	87831-4220	N.A	N.A	2	YES	N.A	YES	N.A	YES	N.A													
	87831-4221	N.A	N.A	3																			
	87831-4236	N.A	N.A	4																			
	87831-4228	N.A	N.A	2	YES	N.A	YES	N.A	YES	YES													
	87831-4229	N.A	N.A	3																			
44	87831-4419	N.A	N.A	1									42.00	44.85	46.65	45.00	38.00	N.A	2.50	3.60±0.20			
	87831-4420	N.A	N.A	2	YES	N.A	YES	N.A	YES	N.A													
	87831-4421	N.A	N.A	3																			
	87831-4436	N.A	N.A	4																			
	87831-4428	N.A	N.A	2	YES	N.A	YES	N.A	YES	YES													
	87831-4429	N.A	N.A	3																			
	87831-4435	N.A	N.A	3	YES	N.A	YES	N.A	YES	YES													
46	87831-4619	N.A	N.A	1									44.00	46.85	48.65	47.00	40.00	N.A	2.50	3.60±0.20			
	87831-4620	N.A	N.A	2	YES	N.A	YES	N.A	YES	N.A													
	87831-4621	N.A	N.A	3																			
	87831-4636	N.A	N.A	4																			
	87831-4628	N.A	N.A	2	YES	N.A	YES	N.A	YES	YES													
	87831-4629	N.A	N.A	3																			
48	87831-4819	N.A	N.A	1									46.00	48.85	50.65	49.00	42.00	N.A	2.50	3.60±0.20			
	87831-4820	N.A	N.A	2	YES	N.A	YES	N.A	YES	N.A													
	87831-4821	N.A	N.A	3																			
	87831-4836	N.A	N.A	4																			
	87831-4828	N.A	N.A	2	YES	N.A	YES	N.A	YES	YES													
	87831-4829	N.A	N.A	3																			
50	87831-5019	N.A	N.A	1									48.00	50.85	52.65	51.00	44.00	N.A	2.50	3.60±0.20			
	87831-5020	N.A	N.A	2	YES	N.A	YES	N.A	YES	N.A													
	87831-5021	N.A	N.A	3																			
	87831-5036	N.A	N.A	4																			
	87831-5028	N.A	N.A	2	YES	N.A	YES	N.A	YES	YES													
	87831-5029	N.A	N.A	3																			
	87831-5035	N.A	N.A	3	YES	N.A	YES	N.A	YES	YES													

PLATING OPTIONS:

- 1 - 0.05-0.13um/2-5uin GOLD IN CONTACT AREA AND 1.88um/75uin MIN. MATTE TIN IN SOLDER TAIL AREA OVER 1.27um/50uin MIN. NICKEL OVERALL.
- 2 - 0.38um/15uin GOLD IN CONTACT AREA AND 1.88um/75uin MIN. MATTE TIN IN SOLDER TAIL AREA OVER 1.27um/50uin MIN. NICKEL OVERALL.
- 3 - 0.76um/30uin GOLD IN CONTACT AREA AND 1.88um/75uin MIN. MATTE TIN IN SOLDER TAIL AREA OVER 1.27um/50uin MIN. NICKEL OVERALL.
- 4 - 2.50um/100uin MIN. MATTE TIN OVER 1.25um/50uin MIN. NICKEL OVERALL.

SEE SHEET 1.2.4.6.8-10 IEC NO. S2017-0022 DRAWN BY: G.MENARLY 2016/07/06 CHECKED BY: CHIKO-SCHEONG 2016/07/27 APPR: KHL IM 2016/07/28 REV: A5	QUALITY SYMBOLS √=0 √=0 √=0	GENERAL TOLERANCES (UNLESS SPECIFIED) 4 PLACES ± --- ± --- 3 PLACES ± --- ± --- 2 PLACES ± 0.20 ± --- 1 PLACE ± --- ± --- 0 PLACE ± --- ± ---	DIMENSION STYLE MM ONLY DRAWN BY: G.MENARLY DATE: 2015/04/15 CHECKED BY: CGOH DATE: 2015/06/29 APPROVED BY: KHL IM DATE: 2015/06/29	SCALE: NTS DESIGN UNITS: METRIC THIRD ANGLE PROJECTION	TITLE: MILLIGRID 2MM PITCH, THROUGH HOLE VERTICAL SHROUDED HEADER molex MATERIAL NO. SEE TABLE DOCUMENT NO. SD-87831-0001 SHEET NO. 13 OF 13
	ANGULAR ± 3° DRAFT WHERE APPLICABLE MUST REMAIN WITHIN DIMENSIONS		THIS DRAWING CONTAINS INFORMATION THAT IS PROPRIETARY TO MOLEX INCORPORATED AND SHOULD NOT BE USED WITHOUT WRITTEN PERMISSION		

tb_frame_A3_P_AM_T
Rev. G 2012/01/11

9 8 7 6 5 4 3 2 1