

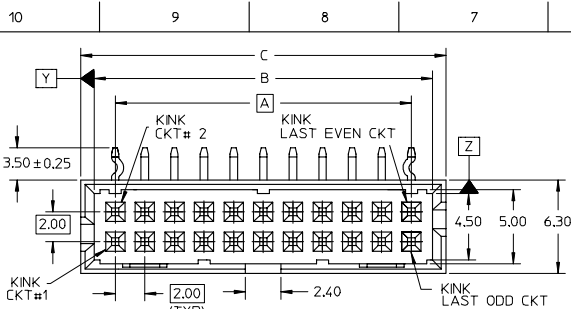
## Excellent Integrated System Limited

Stocking Distributor

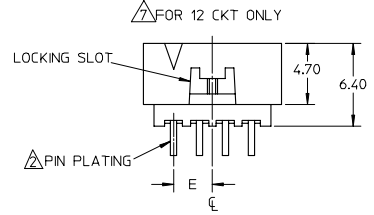
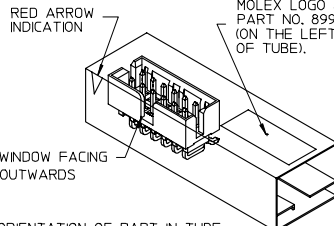
Click to view price, real time Inventory, Delivery & Lifecycle Information:

[Molex Connector Corporation](#)  
[0878331260](#)

For any questions, you can email us directly:  
[sales@integrated-circuit.com](mailto:sales@integrated-circuit.com)

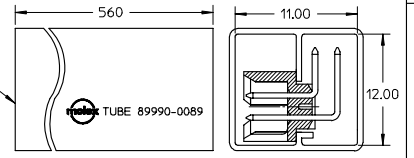


PART NO.	CKT SIZE	KINK CKT	DIMENSION					
			A	B	C	D	E	F
87833-1260	12	1, 2, 11 & 12	10.00	12.85	14.65	13.00	5.00	---
87833-1660	16	1, 2, 15 & 16	14.00	16.85	18.65	17.00	---	10.00



REF: ORIENTATION OF PART IN TUBE.  
(FOR THE REFERENCE OF PART/TUBE ASSEMBLY.)

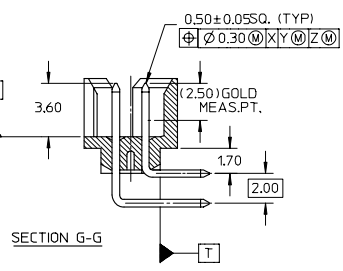
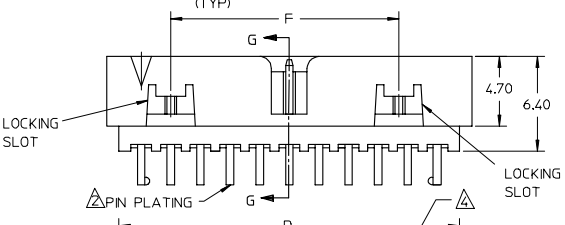
TUBE P/N :  
89990-0089



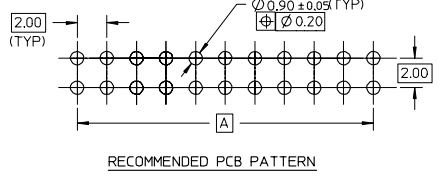
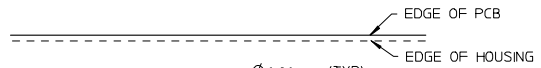
REF: ORIENTATION OF PART IN TUBE.

**NOTES:**

- MATERIAL :  
HOUSING : 30% GF., NYLON 46, UL94V-0, COLOR BLACK.  
PIN : 0.50MM SQ. PHOSPHOR BRONZE.
- PLATING :  
0.38um/15uin GOLD IN CONTACT AREA AND 1.88um/75uin MIN. IN SOLDER TAIL AREA OVER 1.27um/50uin MIN. NICKEL OVERALL.
- PRODUCT SPECIFICATION PS-87831-027 APPLIES.
- LINKWAYS VARIES FROM PART TO PART BECAUSE OF DIFFERENT MOLD.
- RECOMMENDED PCB THICKNESS : 1.60±0.10 MM.
- PARTS ARE TO BE PACKED IN TUBE WITH MOISTURE BARRIER BAG.
- 12 CKT HAS ONE LOCKING SLOT.



SECTION G-G



RECOMMENDED PCB PATTERN

ADD MOIST BAG NOTE EC NO: S2007-0931 DRAWING/REVISION CHKD:SKANG APPROV:HLONG 2007/05/20 2007/06/01 2007/06/01	QUALITY SYMBOLS ▽=0 ▽=0	GENERAL TOLERANCES (UNLESS SPECIFIED)		DIMENSION STYLE MM ONLY	SCALE NTS	DESIGN UNITS METRIC	THIRD ANGLE PROJECTION		
		4 PLACES ± --- ± --- 3 PLACES ± --- ± --- 2 PLACES ± 0.2 ± --- 1 PLACE ± --- ± ---	mm INCH	DRAWN BY BOKKOK DATE 2004/10/04	CHECKED BY PTLIM DATE 2004/10/14	TITLE MGRID SHROUDED HEADER W/SLOT/STANDOFF AND KINKED SOLDER TAIL, R/A			
		ANGULAR ± 3 °		APPROVED BY SLOW DATE 2004/10/14	MOLEX INCORPORATED				
		DRAFT WHERE APPLICABLE MUST REMAIN WITHIN DIMENSIONS		MATERIAL NO. SEE TABLE	DOCUMENT NO. SD-87833-039	SHEET NO. 1 OF 1			