

Excellent Integrated System Limited

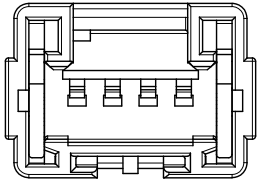
Stocking Distributor

Click to view price, real time Inventory, Delivery & Lifecycle Information:

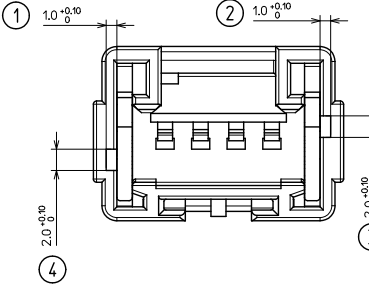
[Molex Connector Corporation](#)
[0988221045](#)

For any questions, you can email us directly:

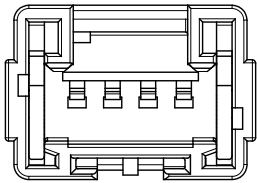
sales@integrated-circuit.com



WHITE CODING
P/N 0988221040



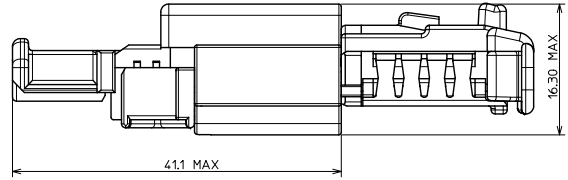
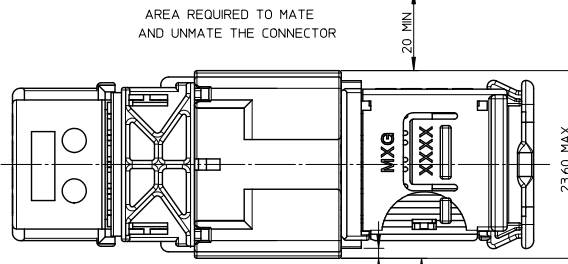
BLACK CODING
P/N 0988221041



GREEN CODING
P/N 0988221045

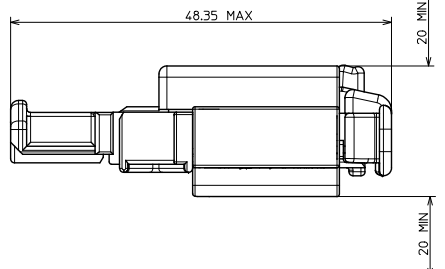
CODING 4:1

HANDLING AREA

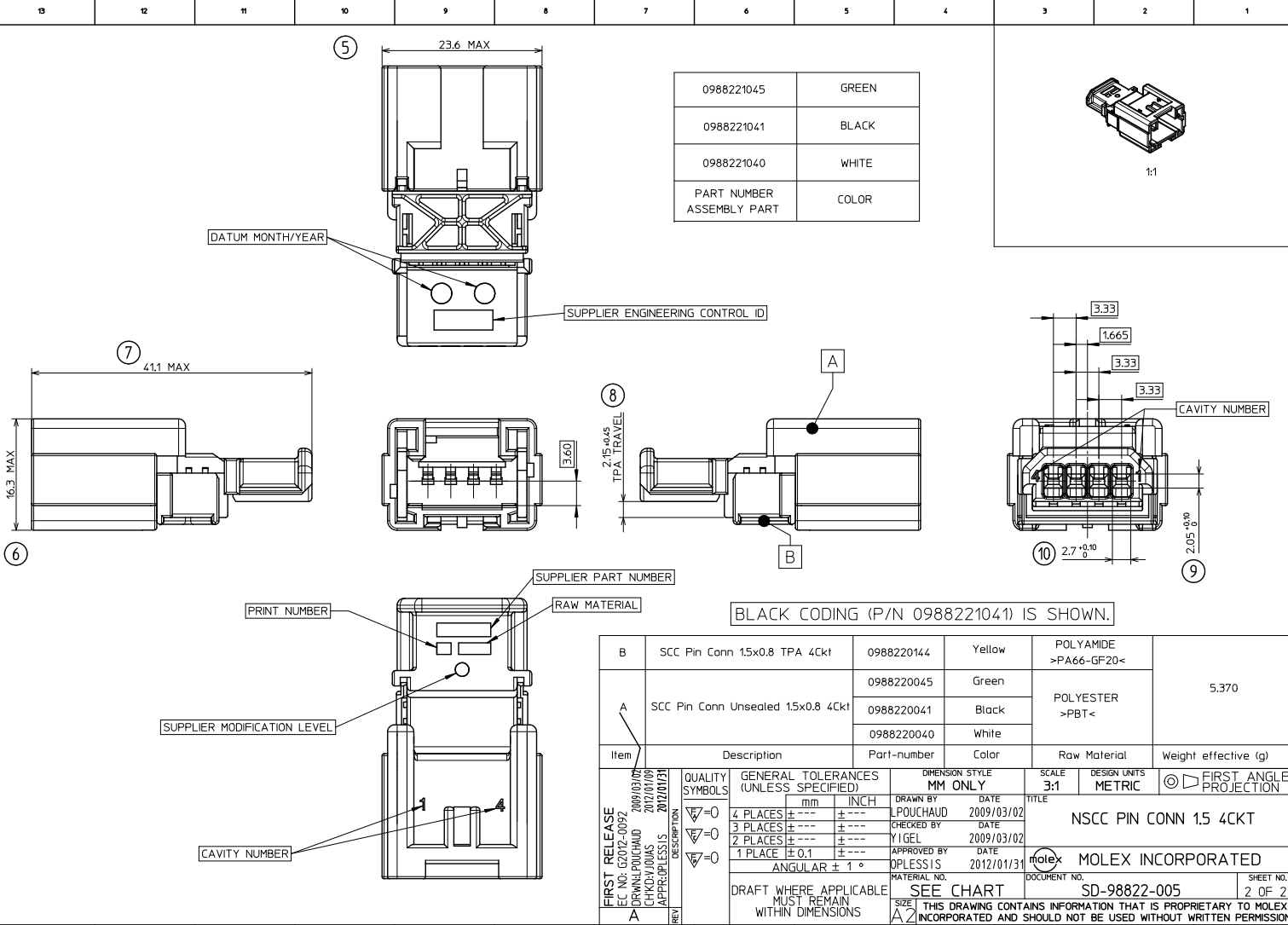


- NOTE : 1 - The using conditions are shown in the MOLEX specification n°AS-98821-001.
- 2 - Male terminal used : SICMA 3 1.5mm
- 3 - Male connector will mate with female connector P/N 098817104x

AREA REQUIRED WHEN THE CONNECTOR IS MATED



FIRST RELEASE IEC NO: GZ072-0092 DRAWN: LPOUCHAUD 2009/03/02 CHECKED: YIGEL 2009/03/02 APPROVED: OPLESSIS 2012/01/31 DESCRIPTION: NSCC PIN CONN 1.5 GRN 4CKT REV: A	QUALITY SYMBOLS	GENERAL TOLERANCES (UNLESS SPECIFIED)	DIMENSION STYLE	SCALE	DESIGN UNITS	FIRST ANGLE PROJECTION
	▽=0	mm INCH	MM ONLY	3:1	METRIC	
	▽=0	4 PLACES ± --- ± ---	DRAWN BY DATE			TITLE
	▽=0	3 PLACES ± --- ± ---	LPOUCHAUD 2009/03/02			NSCC PIN CONN 1.5 4CKT
	2 PLACES ± --- ± ---	CHECKED BY DATE				
	1 PLACE ± 0.1 ± ---	YIGEL 2009/03/02				
	ANGULAR ± 1 °	APPROVED BY DATE				
		OPLESSIS 2012/01/31				
	DRAFT WHERE APPLICABLE MUST REMAIN WITHIN DIMENSIONS	MATERIAL NO.				
		SEE SHEET 2				
		SIZE A2				
		THIS DRAWING CONTAINS INFORMATION THAT IS PROPRIETARY TO MOLEX INCORPORATED AND SHOULD NOT BE USED WITHOUT WRITTEN PERMISSION				
		DOCUMENT NO.				
		SD-98822-005				
		SHEET NO.				
		1 OF 2				



Item	Description	Part-number	Color	Raw Material	Weight effective (g)
B	SCC Pin Conn 1.5x0.8 TPA 4Ckt	0988220144	Yellow	POLYAMIDE >PA66-GF20<	5.370
A	SCC Pin Conn Unsealed 1.5x0.8 4Ckt	0988220045	Green	POLYESTER >PBT<	
		0988220041	Black		
		0988220040	White		

QUALITY SYMBOLS	GENERAL TOLERANCES (UNLESS SPECIFIED)	DIMENSION STYLE	SCALE	DESIGN UNITS	FIRST ANGLE PROJECTION
▽=0	mm INCH	MM ONLY	3:1	METRIC	◎
▽=0	4 PLACES ±--- ±---	DRAWN BY	DATE	TITLE	
▽=0	3 PLACES ±--- ±---	LPOUCHAUD	2009/03/02	NSCC PIN CONN 1.5 4CKT	
▽=0	2 PLACES ±--- ±---	CHECKED BY	DATE	MATERIAL NO. DOCUMENT NO. SHEET NO.	
▽=0	1 PLACE ±0.1 ±---	YIGEL	2009/03/02	SEE CHART SD-98822-005 2 OF 2	
	ANGULAR ± 1 °	APPROVED BY	DATE	MATERIAL NO. DOCUMENT NO. SHEET NO.	
		OPLESSIS	2012/01/31	SEE CHART SD-98822-005 2 OF 2	
	DRAFT WHERE APPLICABLE MUST REMAIN WITHIN DIMENSIONS	MATERIAL NO. DOCUMENT NO. SHEET NO.			
		SEE CHART SD-98822-005 2 OF 2			

MOLEX INCORPORATED

MATERIAL NO. DOCUMENT NO. SHEET NO.