

Excellent Integrated System Limited

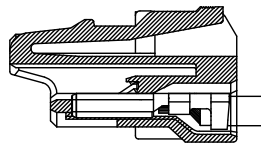
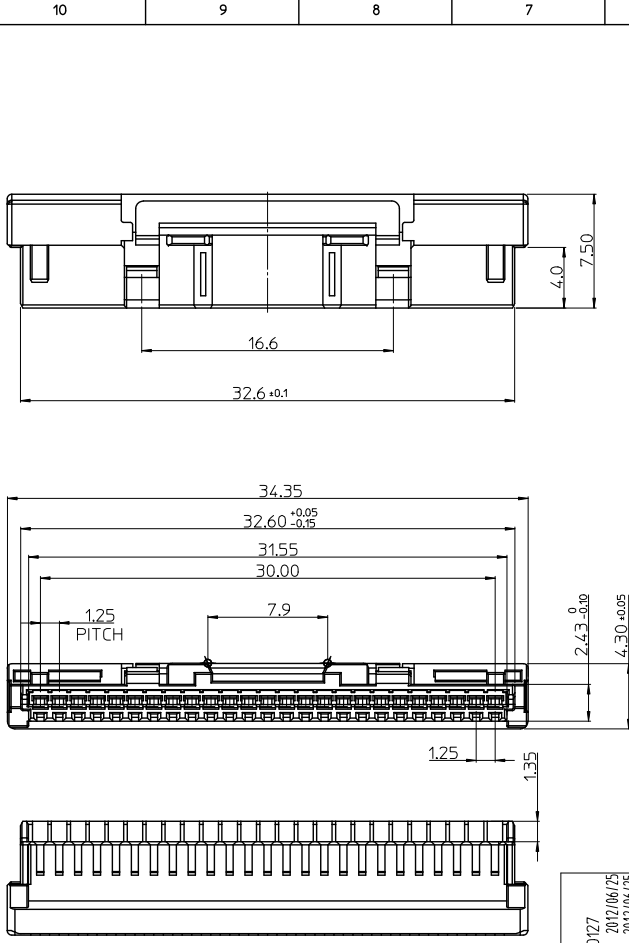
Stocking Distributor

Click to view price, real time Inventory, Delivery & Lifecycle Information:

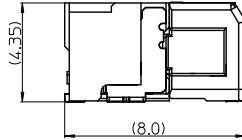
[Molex Connector Corporation](#)
[1040922500](#)

For any questions, you can email us directly:

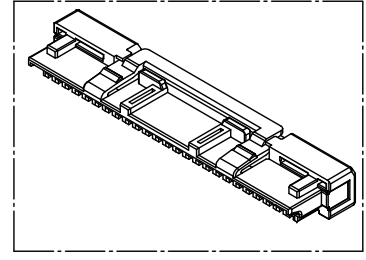
sales@integrated-circuit.com



MATED WITH HEADER ASSEMBLY
[REFERENCE]

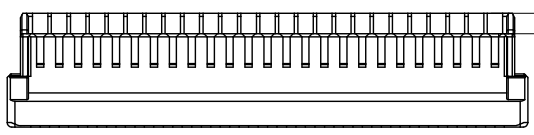
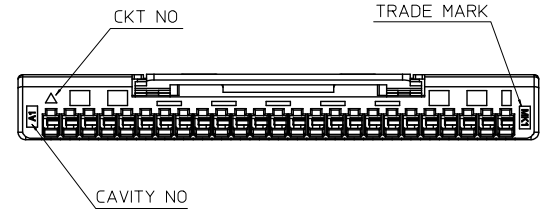
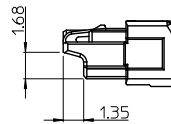


MATED WITH HEADER ASSEMBLY
[REFERENCE]



NOTES.

1. MATERIAL : LIQUID CRYSTAL POLYMER(LCP),
GLASS FILLED, UL94 V-0;
COLOR: NATURAL(IVORY)
2. PRODUCT SPECIFICATION : PS-104091-001
3. PACKAGING SPECIFICATION : PK-104091-001
4. MATED WITH :
HEADER ASS'Y: 104091-2520
TERMINAL : 502381-6001, 104521-6001



ORDER NO 104082-2500

RELEASED	EC NO: KOR2012-0127	2012/06/25
	DRWN:SKCHU	2012/06/25
	CHKD:SKCHU	2012/06/25
	APPR:YSKIM02	2012/08/06

QUALITY SYMBOLS	DESCRIPTION
▽=0	
▽=0	

GENERAL TOLERANCES (UNLESS SPECIFIED)	
	mm INCH
4 PLACES ± ---	± ---
3 PLACES ± ---	± ---
2 PLACES ± 0.15	± ---
1 PLACE ± 0.20	± ---
ANGULAR ± 1 °	
DRAFT WHERE APPLICABLE MUST REMAIN WITHIN DIMENSIONS	

DIMENSION STYLE	
MM ONLY	
DRAWN BY	DATE
JHPARK	2011/04/11
CHECKED BY	DATE
SKCHU	2011/04/11
APPROVED BY	DATE
YSKIM02	2012/08/06
MATERIAL NO.	1040922500

SCALE	DESIGN UNITS	THIRD ANGLE PROJECTION
4/1	METRIC	☉ □
TITLE		
1.25 WTB CONN. R/A -25P PLUG HOUSING		
MOLEX INCORPORATED		
DOCUMENT NO.	SHEET NO.	
SD-104092-007	1 OF 1	

THIS DRAWING CONTAINS INFORMATION THAT IS PROPRIETARY TO MOLEX INCORPORATED AND SHOULD NOT BE USED WITHOUT WRITTEN PERMISSION