

Excellent Integrated System Limited

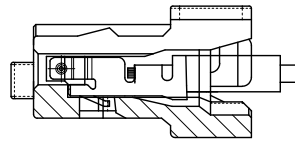
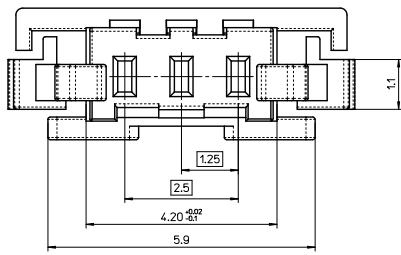
Stocking Distributor

Click to view price, real time Inventory, Delivery & Lifecycle Information:

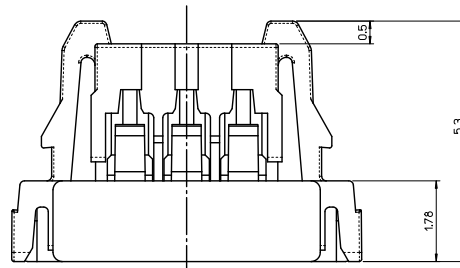
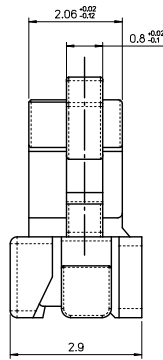
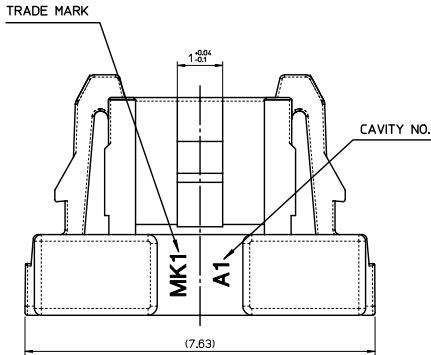
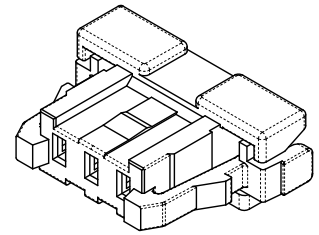
[Molex Connector Corporation](#)
[1041310300](#)

For any questions, you can email us directly:
sales@integrated-circuit.com

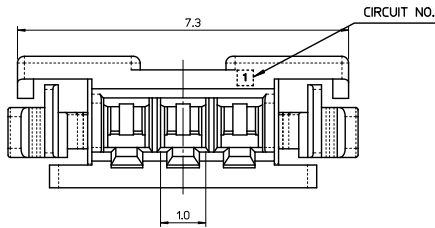
10 9 8 7 6 5 4 3 2 1



MATED CONDITION
(REFERENCE)



- NOTES.
- MATED WITH : 104130-0310
 - MATERIAL :
LCP E130I, GLASS FILLED, UL94V-0
HALOGEN FREE, COLOR OF NATURAL
 - APPLICABLE TERMINAL : 104539-8102



ORDER NUMBER 104131-0300

RELEASED EC NO: K052012-0059 DRWN: JHPARK01 2011/12/19 CHKO: SHCHU 2011/12/19 APPR: YUNSIKKIM 2011/12/29	QUALITY SYMBOLS ▽=0 ▽=0	GENERAL TOLERANCES (UNLESS SPECIFIED)		DIMENSION STYLE MM ONLY		SCALE	DESIGN UNITS METRIC	THIRD ANGLE PROJECTION			
		4 PLACES ± --- ± ---	3 PLACES ± --- ± ---	2 PLACES ± 0.15 ± ---	1 PLACE ± 0.20 ± ---	ANGULAR ± 1°	DRAWN BY JHPARK01	DATE 2011/12/19	TITLE 1.25MM WTB CONN. HOUSING 3P (POSITIVE LOCKING)		
		DRAFT WHERE APPLICABLE MUST REMAIN WITHIN DIMENSIONS					CHECKED BY SHCHU	DATE 2011/12/19	MOLEX INCORPORATED		
		MATERIAL NO. 1041310300					APPROVED BY YUNSIKKIM	DATE 2011/12/29	DOCUMENT NO. SD-104131-001	SHEET NO. 1 OF 01	

9 8 7 6 5 4 3 2 1