

Excellent Integrated System Limited

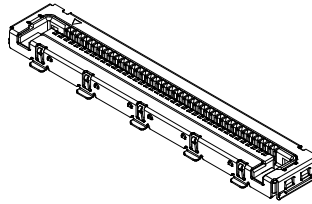
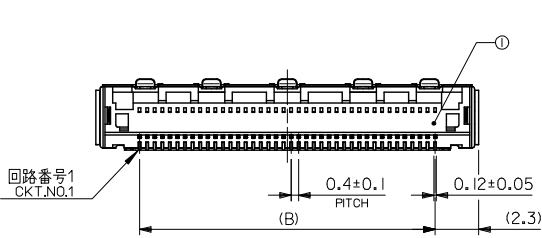
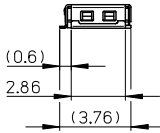
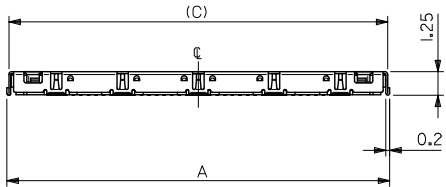
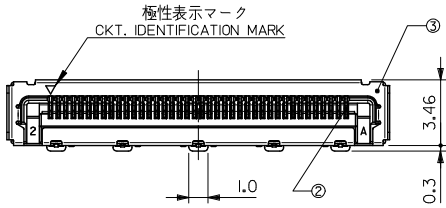
Stocking Distributor

Click to view price, real time Inventory, Delivery & Lifecycle Information:

[Molex Connector Corporation](#)
[5010834010](#)

For any questions, you can email us directly:
sales@integrated-circuit.com

10 9 8 7 6 5 4 3 2 1

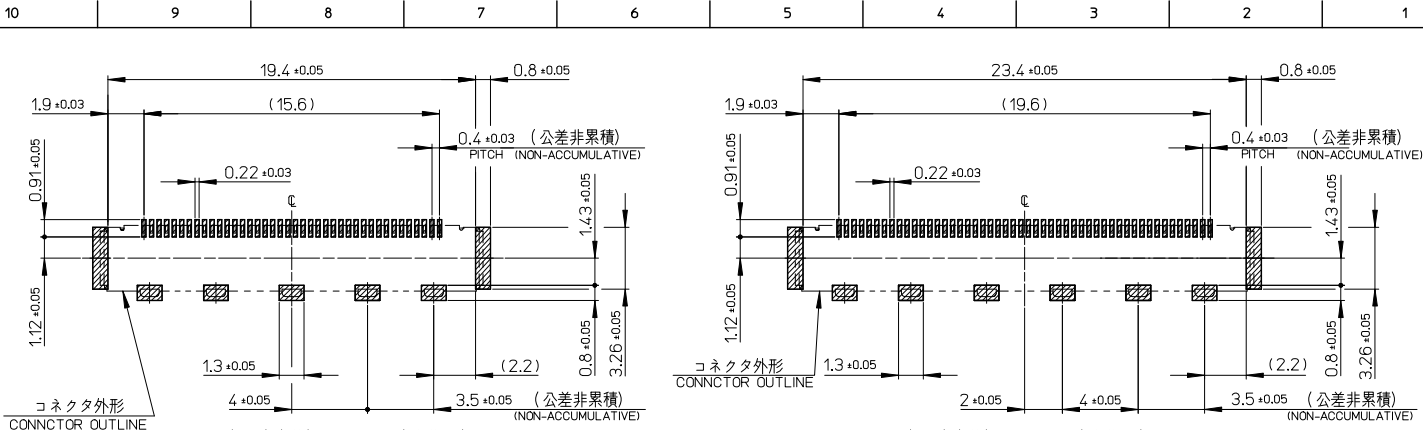


注記
NOTES

1. テール及びネールの平坦度は0.1MAX.
TAIL AND NAIL COPLANARITY TO BE 0.1MAX.

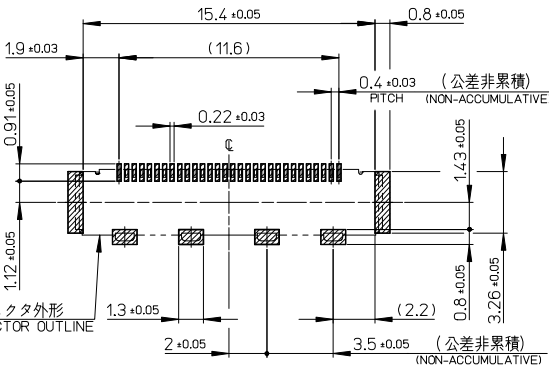
| | | | | |
|----|------|------|----------------------|--------------|
| 24 | 19.6 | 24.2 | 501083-5009 | 50 |
| 20 | 15.6 | 20.2 | 501083-4009 | 40 |
| 16 | 11.6 | 16.2 | 501083-3009 | 30 |
| C | B | A | 製品番号 MATERIAL NO. | 極数 CKT. |
| | | | MODEL NO. | 501083-**-09 |

| | | | | | | | |
|---|--|--------------|----------------------------|--|--|------------------------|---------------------------|
| REVISED EC NO. J2007-1019 DRAWN BY FUJII 2006/10/06 CHKD: IKANEKO 2006/10/06 APPR: IKANEKO 2006/10/10 | GENERAL TOLERANCES (UNLESS SPECIFIED) | | DIMENSION STYLE MM ONLY | | SCALE 5:1 | DESIGN UNITS METRIC | THIRD ANGLE PROJECTION |
| | 10 UNDER | ± 0.2 | DRAWN BY KTAKETOMI | DATE 2004/02/10 | TITLE 0.4 WIRE TO BOARD CONN. REC. HOUSING ASSEMBLY TOP ENTRY -LEAD FREE- | | |
| | 10 OVER 30 UNDER | ± 0.25 | CHECKED BY TKANEKO | DATE 2004/02/10 | | | |
| | 30 OVER | ± 0.3 | APPROVED BY AHORINO | DATE 2004/02/10 | MOLEX INCORPORATED | | |
| ANGULAR ±3° | | MATERIAL NO. | | DOCUMENT NO. SD-501083-001 | | | |
| DRAFT WHERE APPLICABLE MUST REMAIN WITHIN DIMENSIONS | | SEE CHART | | THIS DRAWING CONTAINS INFORMATION THAT IS PROPRIETARY TO MOLEX INCORPORATED AND SHOULD NOT BE USED WITHOUT WRITTEN PERMISSION | | | |

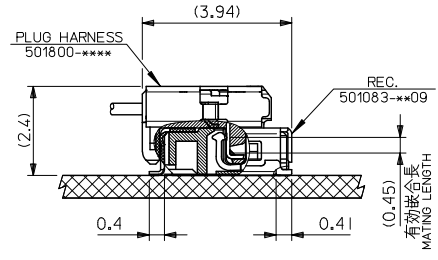


40極用参考基板レイアウト (実装面)
P.C.BOARD PATTERN DIMENSION FOR 40ckts
(REFERENCE)
(MOUNTING SIDE)

50極用参考基板レイアウト (実装面)
P.C.BOARD PATTERN DIMENSION FOR 50ckts
(REFERENCE)
(MOUNTING SIDE)



30極用参考基板レイアウト (実装面)
P.C.BOARD PATTERN DIMENSION FOR 30ckts
(REFERENCE)
(MOUNTING SIDE)



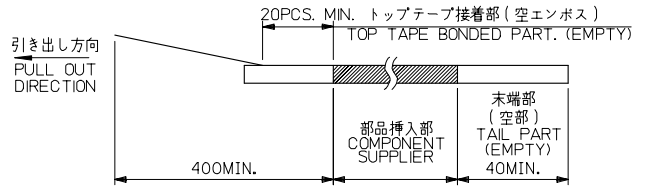
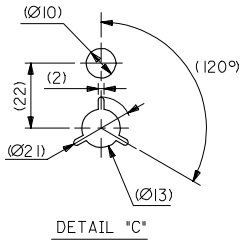
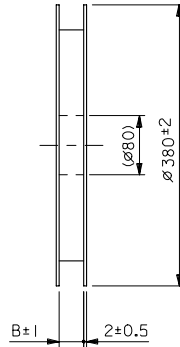
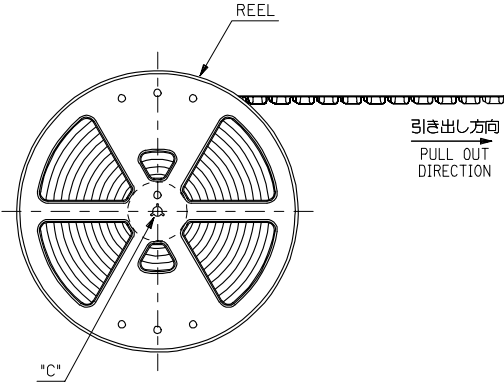
嵌合断面図 (参考)
CROSS-SECTION VIEW OF MATED CONNECTOR
(REFERENCE)

| | | | | | | |
|---|--|--------------|--|--|------------------------|---------------------------|
| REVISED EC NO. J2007-1019 DRAWN BY FUJII CHKD: IKANEKO APPR: IKANEKO REV H | GENERAL TOLERANCES (UNLESS SPECIFIED) | | DIMENSION STYLE MM ONLY | SCALE 5:1 | DESIGN UNITS METRIC | THIRD ANGLE PROJECTION |
| | 10 UNDER | ± 0.2 | DRAWN BY DATE KTAKETOMI 2004/02/10 | 0.4 WIRE TO BOARD CONN. REC. HOUSING ASSEMBLY TOP ENTRY -LEAD FREE- MOLEX INCORPORATED SEE 1 OF 2 DOCUMENT NO. SD-501083-001 SHEET NO. 2 OF 2 | | |
| | 10 OVER 30 UNDER | ± 0.25 | CHECKED BY DATE TKANEKO 2004/02/10 | | | |
| | 30 OVER | ± 0.3 | APPROVED BY DATE AHORINO 2004/02/10 | | | |
| ANGULAR ± 3 ° | | MATERIAL NO. | | | | |
| DRAFT WHERE APPLICABLE MUST REMAIN WITHIN DIMENSIONS | | | SIZE A3 | THIS DRAWING CONTAINS INFORMATION THAT IS PROPRIETARY TO MOLEX INCORPORATED AND SHOULD NOT BE USED WITHOUT WRITTEN PERMISSION | | |

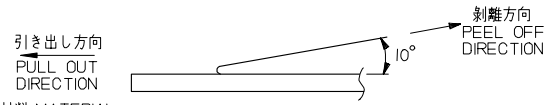
10 9 8 7 6 5 4 3 2 1

注記 NOTES

- 製品詳細寸法については図面 SD-501083-001 を参照下さい。
RE DETAILED DIMENSION, SEE SD-501083-001
- 梱包数量: 3000 個/リール
NUMBER OF CONNECTORS: 3000PCS/REEL
- リードテープ長さ LEAD TAPE LENGTH

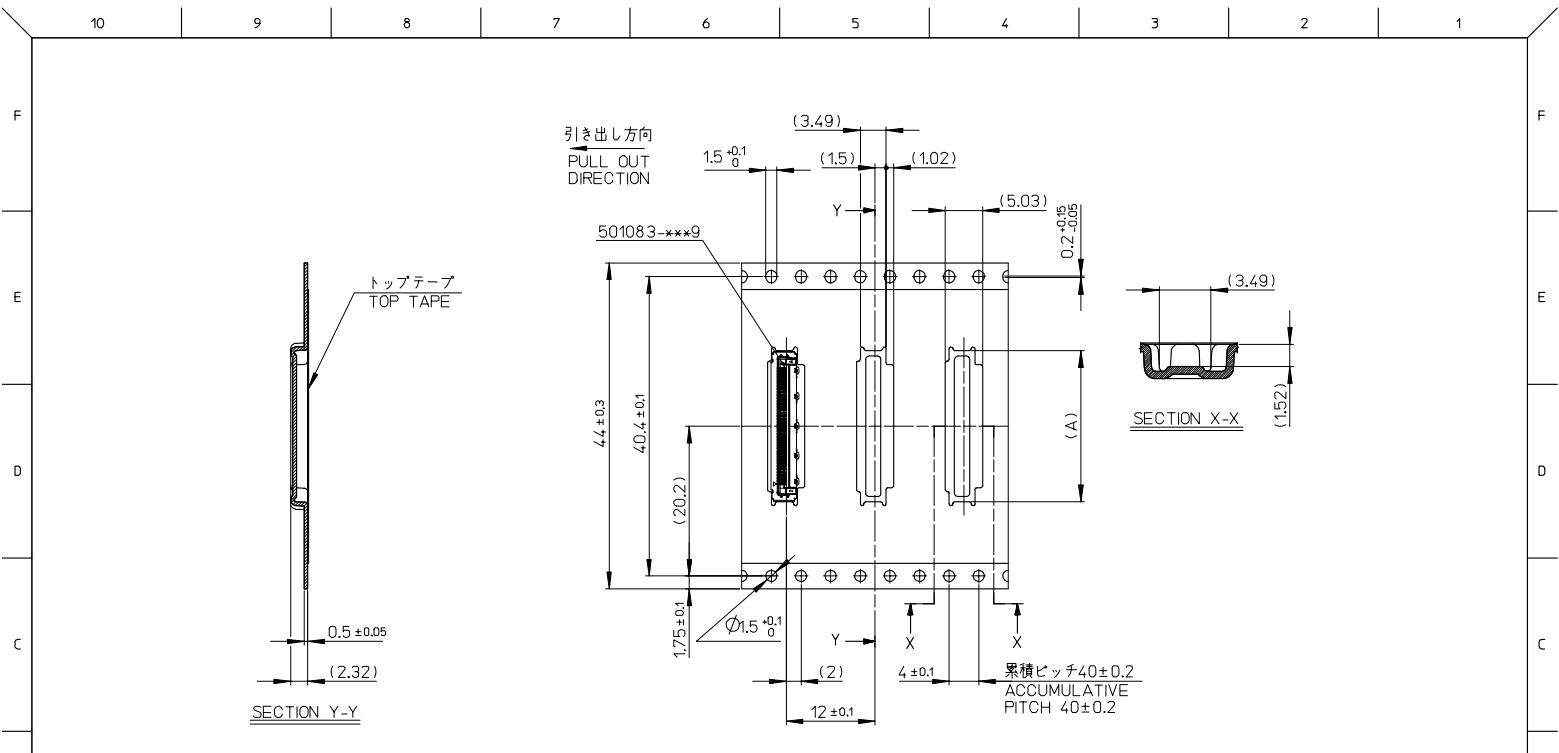


- トップテープの剥離強度: $0.1\text{N} \sim 0.7\text{N} (10.2\text{gf} \sim 71.4\text{gf})$
(剥離方向は下図参照)
尚、本規格値は出荷時に適用。(但し、輸送時に剥離が発生しないこと。)
PEELING OFF FORCE OF TOP TAPE: $0.1\text{N} \sim 0.7\text{N} (10.2\text{gf} \sim 71.4\text{gf})$
(PEELING DIRECTION AS SHOWN IN FOLLOWING FIG.)
THIS REQUIREMENT SHOULD BE APPLIED AT SHIPMENT.
PEEL OFF SHOULD NOT BE ALLOWED, DURING TRANSPORTION.



- 材料 MATERIAL
キャリアテープ (CARRIER TAPE): ポリプロピレン (POLYPROPYLENE)
トップテープ (TOP TAPE): PET, PE, PEF
リール (REEL): ポリスチレン (PS) <リサイクル材を含む>
POLYSTYRENE (PS) <RECYCLE MATERIAL CONTAINED>

| | | | | | | | | | | | | | | | | | | | | | |
|--|--|---------------------------------------|--|-----------------|--|-----------------|--|--------------|--|------------------------|--|-------------|--|--------------|--|-----------------------|--|-----------------------|--|----------------|--|
| REVISED | | EC NO: J2007-4508 | | 2006/11/27 | | DRAWING BY FUJI | | 2006/11/27 | | CHKD: KANEKO | | 2006/11/27 | | APPR: KANEKO | | 2006/11/27 | | MODEL NO. | | 501083-***10 | |
| DESCRIPTION | | GENERAL TOLERANCES (UNLESS SPECIFIED) | | DIMENSION STYLE | | SCALE | | DESIGN UNITS | | THIRD ANGLE PROJECTION | | DRAWN BY | | DATE | | TITLE | | 0.4 W/B CONN. REC.HSG | | ASSY TOP ENTRY | |
| 10 UNDER | | ± 0.2 | | MM ONLY | | 5:1 | | METRIC | | DRAWN BY | | DATE | | TITLE | | EMBOSSED TAPE PACKAGE | | MOLEX INCORPORATED | | SHEET NO. | |
| 10 OVER 30 UNDER | | ± 0.25 | | DRAWN BY | | DATE | | CHECKED BY | | DATE | | APPROVED BY | | DATE | | MATERIAL NO. | | DOCUMENT NO. | | 1 OF 3 | |
| 30 OVER | | ± 0.3 | | DATE | | DATE | | DATE | | DATE | | DATE | | DATE | | DATE | | DATE | | DATE | |
| ANGULAR | | $\pm 3^\circ$ | | DATE | | DATE | | DATE | | DATE | | DATE | | DATE | | DATE | | DATE | | DATE | |
| DRAFT WHERE APPLICABLE | | MUST REMAIN | | DATE | | DATE | | DATE | | DATE | | DATE | | DATE | | DATE | | DATE | | DATE | |
| WITHIN DIMENSIONS | | MUST REMAIN | | DATE | | DATE | | DATE | | DATE | | DATE | | DATE | | DATE | | DATE | | DATE | |
| SIZE | | SEE CHART | | DATE | | DATE | | DATE | | DATE | | DATE | | DATE | | DATE | | DATE | | DATE | |
| A3 | | SEE CHART | | DATE | | DATE | | DATE | | DATE | | DATE | | DATE | | DATE | | DATE | | DATE | |
| THIS DRAWING CONTAINS INFORMATION THAT IS PROPRIETARY TO MOLEX | | SD-501083-002 | | DATE | | DATE | | DATE | | DATE | | DATE | | DATE | | DATE | | DATE | | DATE | |
| INCORPORATED AND SHOULD NOT BE USED WITHOUT WRITTEN PERMISSION | | SD-501083-002 | | DATE | | DATE | | DATE | | DATE | | DATE | | DATE | | DATE | | DATE | | DATE | |



44mm 幅キャリアテープ
44mm WIDTH CARRIER TAPE

| | | | | |
|--------------------------------|------|------|----------------------|------------|
| 44 | 45.5 | 24.4 | 501083-5010 | 50 |
| キャリアテープ幅 CARRIER TAPE WIDTH | B | (A) | 501083-4010 | 40 |
| | | | 製品番号 MATERIAL NO. | 極数 CKT. |
| | | | 501083-**10 | |

| | | | | | | |
|---|---------------------------------------|--------------|----------------------------|---|----------------------------|--|
| REVISED EC NO: J2007-4508 DRAWN BY: FUJI 2006/11/27 CHKD: KANEKO 2006/11/27 APPR: KANEKO 2006/11/27 | GENERAL TOLERANCES (UNLESS SPECIFIED) | | DIMENSION STYLE MM ONLY | SCALE 5:1 | DESIGN UNITS METRIC | 0.4 W/B CONN. REC.HSG ASSY TOP ENTRY EMBOSSED TAPE PACKAGE MOLEX INCORPORATED |
| | 10 UNDER | ±0.2 | DRAWN BY KTAKETOMI | DATE 2004/12/10 | MODEL NO. SD-501083-002 | |
| | 10 OVER 30 UNDER | ±0.25 | CHECKED BY TKANEKO | DATE 2004/12/10 | | |
| | 30 OVER | ±0.3 | APPROVED BY AHORINO | DATE 2004/12/10 | | |
| ANGULAR | ±3° | MATERIAL NO. | | DOCUMENT NO. SD-501083-002 | | SHEET NO. 2 OF 3 |
| DRAFT WHERE APPLICABLE MUST REMAIN WITHIN DIMENSIONS | | SEE CHART | | THIS DRAWING CONTAINS INFORMATION THAT IS PROPRIETARY TO MOLEX INCORPORATED AND SHOULD NOT BE USED WITHOUT WRITTEN PERMISSION | | |

10 9 8 7 6 5 4 3 2 1

F

E

D

C

B

A

F

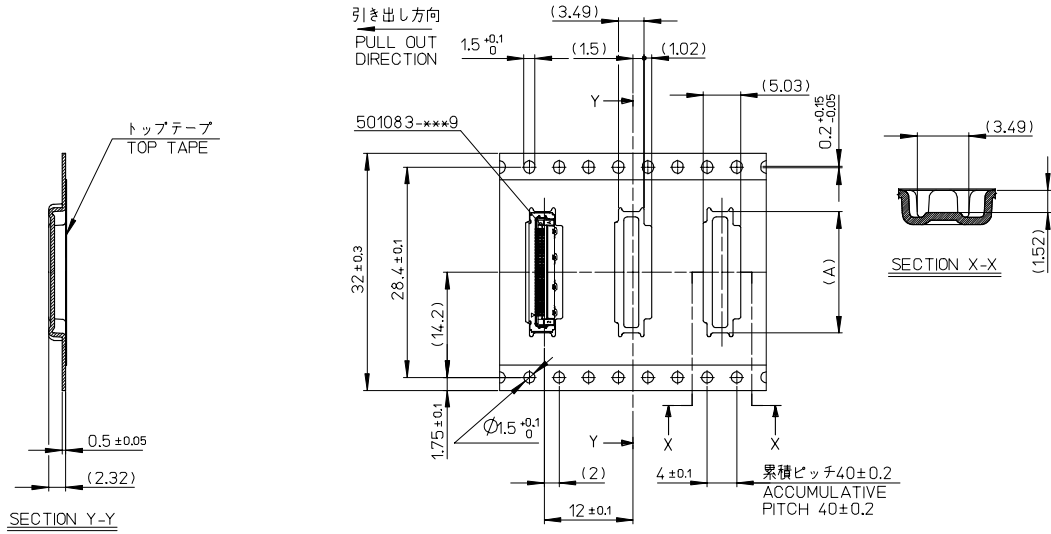
E

D

C

B

A



32mm 幅キャリアテープ
32mm WIDTH CARRIER TAPE

| | | | | |
|--------------------------------|------|------|----------------------|-------------|
| 32 | 33.5 | 16.4 | 501083-3010 | 30 |
| キャリアテープ幅 CARRIER TAPE WIDTH | B | (A) | 製品番号 MATERIAL NO. | 極数 CKT. |
| | | | MODEL NO. | 501083-**10 |

| | | | | | | |
|--|--|--------|---|--------------------|--|-------------------------------|
| REVISED EC NO: J2007-4508 DRAWN BY: FUJI CHKD: KANEKO APPR: KANEKO 2006/11/27 2006/11/27 2006/11/27 | GENERAL TOLERANCES (UNLESS SPECIFIED) | | DIMENSION STYLE MM ONLY | SCALE 1:1 | DESIGN UNITS METRIC | THIRD ANGLE PROJECTION |
| | 10 UNDER | ± 0.2 | DRAWN BY KTAKETOMI | DATE 2004/12/10 | TITLE 0.4 W/B CONN. REC. HSG ASSY TOP ENTRY EMBOSSED TAPE PACKAGE | |
| | 10 OVER 30 UNDER | ± 0.25 | CHECKED BY TKANEKO | DATE 2004/12/10 | MOLEX INCORPORATED | |
| | 30 OVER | ± 0.3 | APPROVED BY AHORINO | DATE 2004/12/10 | MATERIAL NO. SEE CHART | DOCUMENT NO. SD-501083-002 |
| A | DRAFT WHERE APPLICABLE MUST REMAIN WITHIN DIMENSIONS | | SIZE A3 THIS DRAWING CONTAINS INFORMATION THAT IS PROPRIETARY TO MOLEX INCORPORATED AND SHOULD NOT BE USED WITHOUT WRITTEN PERMISSION | | | |