



Distributor of Panduit: Excellent Integrated System Limited

Datasheet of DNF10-250FIMB-K - Connector Quick Connect Tab 10-12 AWG 0.250" (6.35mm)
Crimp

Contact us: sales@integrated-circuit.com Website: www.integrated-circuit.com

Excellent Integrated System Limited

Stocking Distributor

Click to view price, real time Inventory, Delivery & Lifecycle Information:

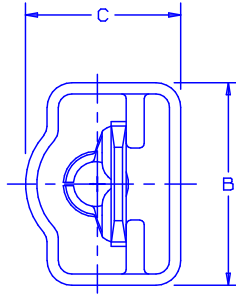
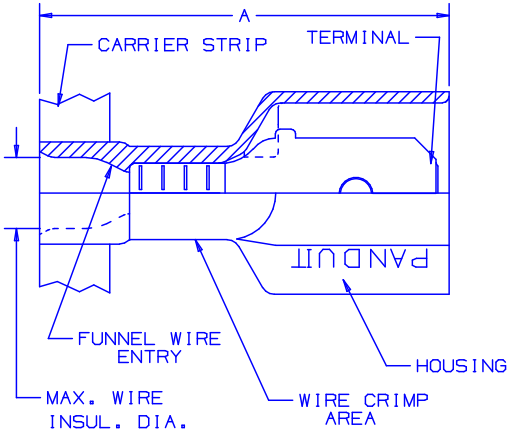
[Panduit](#)

[DNF10-250FIMB-K](#)

For any questions, you can email us directly:

sales@integrated-circuit.com

Contact us: sales@integrated-circuit.com Website: www.integrated-circuit.com



- UL LISTED AND CSA CERTIFIED FOR:
 - 600V MAX VOLTAGE RATING
 - 221°F (105°C) MAX TEMP RATING (CSA).
 - 257°F (125°C) MAX. TEMP. RATING (UL).
 - 257°F (125°C) MAX. TEMP. RATING (UL & CSA) FOR DNF10-250FIMB-K ONLY.
 - STRANDED COPPER WIRE ONLY
- PACKAGE QTY: 1K=1000 PIECES CONTINUOUS MOLDED STRIP CARRIER
- MATERIAL:
 - STAMPING- BRASS, NICKEL PLATED - COPPER, NICKEL PLATED (FOR DNF10-250FIMB-K)
 - HOUSING-TYPE 6/6 NYLON
- DIMENSIONS IN BRACKETS ARE IN mm
- COLORS ARE TRANSLUCENT
- WIRE STRIP LENGTH: $9/32^{+1/32}_{-0}$ (7,1⁺⁸₋₀)
 $3/8^{+1/32}_{-0}$ (9,5⁺⁸₋₀) (FOR DNF10-250FIMB-K)



TOOL CHART - RECOMMENDED PRESSES: CP-861, CP-860, CP-851, CP-862

PART NUMBER	TAB SIZE	WIRE RANGE AWG	COLOR (note 5)	MAX. INSUL.	DIMENSIONS in			CA-800 & CA9 APPLICATOR DIE INSERTS
					A ±.03	B ±.01	C ±.01	
DNF18-250FIMB-K	.250 X .032 (6,3 X 0,8)	22-18 (0,5-1,0)	RED	.135 (3,43)	.91 (23,1)	.45 (11,4)	.34 (8,6)	CD-800-4, CA9-4B
DNF14-250FIMB-K	.250 X .032 (6,3 X 0,8)	16-14 (1,5-2,5)	BLUE	.160 (4,06)	.91 (23,1)	.46 (11,7)	.34 (8,6)	CD-800-5, CA9-5B
DNF10-250FIMB-K	.250 X .032 (6,3 X 0,8)	12-10 (4,0-6,0)	YELLOW	.220 (5,59)	.96 (24,4)	.45 (11,4)	.36 (9,1)	CD-800-18, CA9-18B

08	7/03	KLFU		UPDATED DRAWING					A41411_08		
07	1/01	RM	SKB	FILESPEC WAS N41411AA_PCD_06	8925	JAC	CCH				
06	11/00	EJS		ADDED "-" TO PART NUMBERS, WIRE RANGE FOR PART DNF18-250FIMB-K WAS (0,5-1,5)	08862						
05	7/99	JKD	SKB	ADDED CP-862, CA9	07848	JCJ	TRO				
04	12/98	ED	RLS	MATERIAL WAS TIN PLATED/ DNF10-250FIMB-K ADDED	07382	JCJ	CTN				
REV	DATE	BY	CHK	DESCRIPTION	ECN #	CUST	PM	DRAWN BY JV	CHK'D LM	SCALE	DRAWING NO. A41411



DISCO FULLY INSULATED UNI-MALE DISCONNECT .250 X .032