

Excellent Integrated System Limited

Stocking Distributor

Click to view price, real time Inventory, Delivery & Lifecycle Information:

[Panduit](#)

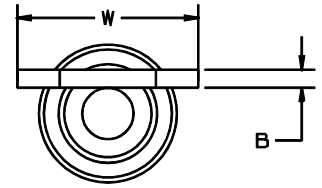
[PMNF2-3F-C](#)

For any questions, you can email us directly:

sales@integrated-circuit.com

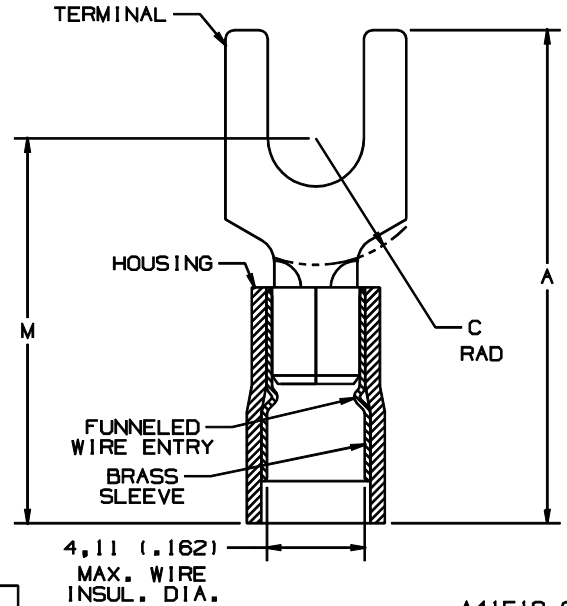
THIS COPY IS PROVIDED ON A RESTRICTED BASIS AND IS NOT TO BE USED IN ANY WAY DETRIMENTAL TO THE INTERESTS OF PANDUIT CORP.

PART NUMBER		STUD SIZE	WIRE RANGE mm ²	DIMENSIONS mm				
PREFIX	PK			A ^{±.25}	W ^{±.25}	C ^{±.38}	B ^{±.25}	M ^{±.50}
PMNF2-3F	-C -M	M3	1,5-2,5 (.16-14)	19,81 (.78)	5,89 (.23)	5,05 (.20)	.81 (.03)	16,26 (.64)
PMNF2-4F	-C -M	M4	1,5-2,5 (.16-14)	21,34 (.84)	7,87 (.31)	5,89 (.23)	.81 (.03)	17,27 (.68)
PMNF2-5F	-C -M	M5	1,5-2,5 (.16-14)	21,85 (.86)	8,58 (.34)	6,35 (.25)	.81 (.03)	17,78 (.70)
PMNF2-6F	-C -M	M6	1,5-2,5 (.16-14)	26,16 (1.02)	11,18 (.44)	8,45 (.33)	.81 (.03)	18,81 (.74)



NOTES:

- USED FOR:
 - A. 600V MAX. VOLTAGE RATING
 - B. 105°C (221°F) MAX. TEMP. RATING
 - C. SOLID & STRANDED COPPER WIRE
- PACKAGE QTY:
 - A. STD: C=100
 - B. BULK: M=1000
- MATERIAL:
 - A. STAMPING: ETP 110 COPPER, TIN PLATED
 - B. HOUSING: TYPE 6/6 NYLON, BLUE
- WIRE STRIP LENGTH: 5,6⁺⁸₋₀ (7/32^{+1/32}₋₀)
- INSTALLATION TOOLS: REF DWGS. A41522, A41523, A41524, A41525
- DIMENSIONS IN BRACKETS ARE IN INCHES OR AWG



4,11 (.162)
MAX. WIRE
INSUL. DIA.

A41518_04

04	10/97	JAMB		CHANGED PERIODS TO COMMAS ON ALL METRIC DIMENSIONS.			
03	1/97	TM	RLS	UPDATE DIMENSIONS FILESPEC WAS NPC_A41518_02	05478	DBH	LA
02	1/92	BK	RLS	CHANGED COMMAS TO PERIODS #5 WAS A41511, #1C ADDED COPPER	00765	KS	LA
01	8/91	SJ	SJ	LM WIRE STRIP LENGTH WAS 7.1 mm	00563	KS	LA
00	6/91	BK	SJ	RELEASED	00538	KS	LA
REV	DATE	BY	CHK	DESCRIPTION	ECN #	PM	CUST

PANDUIT

CORP.

TINLEY PARK, ILLINOIS

1,5-2,5 mm² METRIC NYLON INSULATED,
FUNNELED ENTRY FORK TERMINAL

DRAWN BY: BDK CHK'D: LM SCALE: NONE DRAWING NO.: A41518