

Excellent Integrated System Limited

Stocking Distributor

Click to view price, real time Inventory, Delivery & Lifecycle Information:

[Panduit](#)

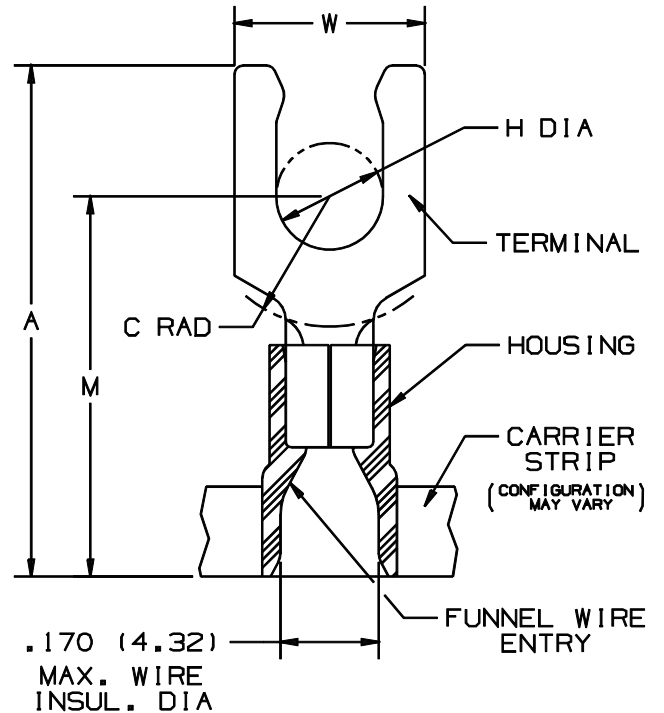
[PV14-10LFB-3K](#)

For any questions, you can email us directly:

sales@integrated-circuit.com

THIS COPY IS PROVIDED ON A RESTRICTED BASIS AND IS NOT TO BE USED IN ANY WAY DETRIMENTAL TO THE INTERESTS OF PANDUIT CORP.

| PANDUIT PART NUMBER | STUD SIZE | DIMENSIONS in. | | | | |
|---------------------|-----------|----------------|---------------|---------------|----------------|---------------|
| | | A ±.03 | W ±.01 | C ±.02 | M ±.03 | H ±.01 |
| PV14-6LFB-3K | #6 | .85 (21.59) | .25 (6.35) | .18 (4.57) | .63 (16.00) | .14 (3.56) |
| PV14-6LFWB-3K | #6 | .85 (21.59) | .29 (7.37) | .18 (4.57) | .63 (16.00) | .14 (3.56) |
| PV14-8LFB-3K | #8 | .92 (23.37) | .29 (7.37) | .23 (5.84) | .68 (17.27) | .16 (4.06) |
| PV14-10LFB-3K | #10 | .92 (23.37) | .33 (8.38) | .23 (5.84) | .68 (17.27) | .19 (4.83) |
| PV14-10LFNB-3K | #10 | .92 (23.37) | .28 (7.11) | .23 (5.84) | .68 (17.27) | .19 (4.83) |



NOTES :

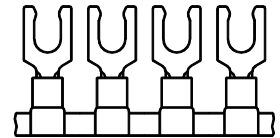
- UL LISTED AND CSA CERTIFIED FOR :
 - 600 V MAX. VOLTAGE RATING
 - 221°F (105°C) MAX. TEMP. RATING
 - #16-14 AWG (1.5-2.5 mm²) SOLID OR STRANDED, COPPER WIRE
- PACKAGE QTY. : - 3K = 3000 PCS. CONTINUOUS MOLDED CARRIER STRIP
- MATERIAL :
 - STAMPING - .03" THK COPPER, TIN PLATED
 - HOUSING - BLUE VINYL
- DIMENSIONS IN BRACKETS ARE IN MILLIMETERS
- INSTALLATION TOOLS :
 - PRESSES - CP-851, CP-860, CP-861
 - APPLICATOR - CA-800
 - DIE INSERTS - CD-800-2
- WIRE STRIP LENGTH: 1/4" ± 1/32" (6.4 ± 0.8)



LISTED
587H
E52164



CERTIFIED
LR31212



A41071_03

• PV14-10LFNB-3K IS NOT UL LISTED OR CSA CERTIFIED

| | | | | | | | | |
|-----|-------|-----|-----|--|-------|----|-----|---|
| 03 | 12/00 | ED | | FILESPEC WAS: N41071AA_PCD_02 | 08925 | | | TINLEY PARK, ILLINOIS TERMO 2PC. CONTINUOUSLY MOLDED VINYL INSULATED, #16-14 BARREL, LOCKING FORKS |
| 02 | 1/96 | ED | | REV.S TO NOTES AND DIM.S \ FILESPEC WAS: A41071A.PRT | 03925 | | | |
| 01 | 3/88 | DSM | | REDRAWN ON CAD | | KS | LA | |
| REV | DATE | BY | CHK | DESCRIPTION | ECN # | PM | SUP | DRAWN BY: DSM CHK'D: FS SCALE: NONE DRAWING NO.: A41071 |