

Excellent Integrated System Limited

Stocking Distributor

Click to view price, real time Inventory, Delivery & Lifecycle Information:

[Panduit](#)
[LAMA1000-58-6Y](#)

For any questions, you can email us directly:
sales@integrated-circuit.com

THIS COPY IS PROVIDED ON A RESTRICTED BASIS AND IS NOT TO BE USED IN ANY WAY DETRIMENTAL TO THE INTERESTS OF PANDUIT CORP.

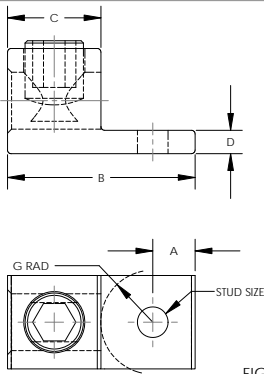


FIGURE 1

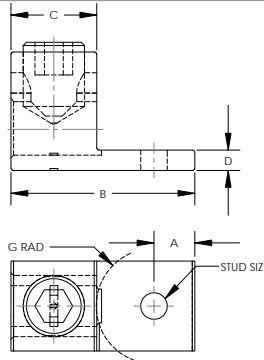


FIGURE 2

- NOTES:**
- MATERIAL:
BODY - ALUMINUM, TIN PLATED
SCREW - ALUMINUM, TIN PLATED
 - UL LISTED & CSA CERTIFIED FOR USE UP TO 600V & TEMPERATURE RATED 90 °C (AL9CU)
NOTE: LAMA300-56-QY, LAMA600S-38-6Y, & LAMA1000-58-6Y ARE CULUS.
 - DUAL RATED FOR USE WITH COPPER OR ALUMINUM STRANDED CODE CONDUCTOR
 - THESE PARTS ARE ROHS COMPLIANT
 - USE OF OXIDE INHIBITING JOINT COMPOUND LIKE PANDUIT CMP-100 RECOMMENDED FOR PAD TO PAD AND CONDUCTOR SURFACES
 - SEE PACKAGING LABEL FOR TIGHTENING TORQUE INFORMATION
 - PKG QTY:
O = 25
6 = 6



PART NUMBER	FIG.	WIRE RANGE COPPER/ALUMINUM	WIRE STRIP LENGTH IN[mm]	STUD SIZE IN	DIMENSIONS - IN [mm]							HEX KEY*
					A	B	C	D	E	F	G	
LAMA300-56-QY	1	6 AWG - 300kcmil	1.00 [25.4]	5/16	.45 [11.4]	2.00 [50.8]	1.00 [25.4]	.25 [6.4]	1.00 [25.4]	1.13 [28.7]	.55 [14.0]	5/16
LAMA350-38-QY	1	6 AWG - 350kcmil	1.13 [28.6]	3/8	.50 [12.7]	2.25 [57.3]	1.13 [28.6]	.25 [6.4]	1.13 [28.6]	1.25 [31.7]	.62 [15.8]	5/16
LAMA500-38-6Y	1	4 AWG - 500kcmil	1.22 [31.0]	3/8	.88 [22.2]	2.81 [71.5]	1.22 [31.0]	.31 [7.9]	1.50 [38.0]	1.56 [39.7]	.71 [18.0]	1/2
LAMA600-38-6Y	1	2 AWG - 600kcmil	1.38 [35.1]	3/8	.63 [15.9]	3.18 [80.9]	1.38 [35.1]	.44 [11.1]	1.60 [40.6]	1.57 [39.8]	1.17 [29.7]	1/2
LAMA600S-38-6Y	2	4 AWG - 600kcmil	1.31 [33.3]	3/8	.63 [16.0]	2.81 [71.4]	1.31 [33.3]	.31 [7.9]	1.38 [35.1]	1.81 [46.0]	.88 [22.4]	3/8
LAMA1000-58-6Y	1	500kcmil - 1000kcmil	1.63 [41.3]	5/8	.81 [20.6]	3.50 [88.9]	1.63 [41.3]	.50 [12.7]	1.75 [44.5]	1.94 [49.2]	1.06 [27.0]	3/8

* HEX SIZE MAY DIFFER FROM CHART. DIFFERENCE IN SIZE WILL NOT AFFECT FIT, FORM, OR FUNCTION OF PART

REV	DATE	BY	CHK	DESCRIPTION	ECN	-R	SUP	CHKD	DATE	DRAWN BY	MATL:	SCALE	DWG NO / CAD FILE	DWG B SIZE
04	9/10	JHNU	JHNU	J: REMOVED LAMA1000-58-6Y FROM DRAWINGS I: REVISED DIMENSIONS FOR LAMA300-56-QY H: REVISED DIMENSIONS FOR LAMA600S-38-6Y G: REVISED DIMENSIONS FOR LAMA1000-58-6Y F: REVISED NOTES	10N006AS-NC		FLD	FLD						
03	7/10	JHNU	JHNU	E: REVISED DWG NUMBER: 10N006AS-NC WAS C-1367 D: REVISED LAMA350-38-QY DIMS: WIRE STRIP LENGTH WAS 1.12, G WAS .63, HEX KEY WAS .516 C: REVISED LAMA500-38-6Y DIMS: WIRE STRIP LENGTH WAS 1.25, A WAS .62, B WAS .375, C WAS 1.25, E WAS 1.38, F WAS 1.50, G WAS .88 B: REVISED LAMA600-38-6Y DIMS: WIRE STRIP LENGTH WAS 1.25, A WAS .62, D WAS .31, E WAS 1.25, F WAS 1.50, G WAS .88 A: REMOVED TORQUE COLUMN FROM TABLE	10N006AS-NC		FLD	FLD						
02	7/07	JHNU	JHNU	REMOVED MADE IN USA NOTE. REMOVED ROHS NOTE CONVERTED DRAWING TO SOLDERWORKS										
01	3/06	JHNU	LEM	REMOVED ROHS NOTE	PC00334					JHNU		NONE		
00	2/06	JHNU	LEM	DRAWING RELEASED - ROHS COMPLIANT	PC00299				2/06		SEE NOTES			
REV	DATE	BY	CHK	DESCRIPTION	ECN	-R	SUP	CHKD	DATE	DRAWN BY	MATL:	SCALE	DWG NO / CAD FILE	DWG B SIZE
													10N006AS-NC	B

10N006AS-NC/00B

PANDUIT CORP. TINLEY PARK, ILLINOIS
 LAMA SERIES 300kcmil THRU 1000kcmil
 ALUMINUM MECHANICAL LUGS
 CUSTOMER DRAWING

UNLESS OTHERWISE SPECIFIED:
 DIMENSIONAL TOLERANCES ARE:
 (X) ± ... (XXX) ± ...
 (XX) ± ... ANGLES ± ...

UNLESS OTHERWISE SPECIFIED,
 ALL DIMENSIONS ARE GIVEN IN
 INCHES, THIRD ANGLE PROJECTION

