

Excellent Integrated System Limited

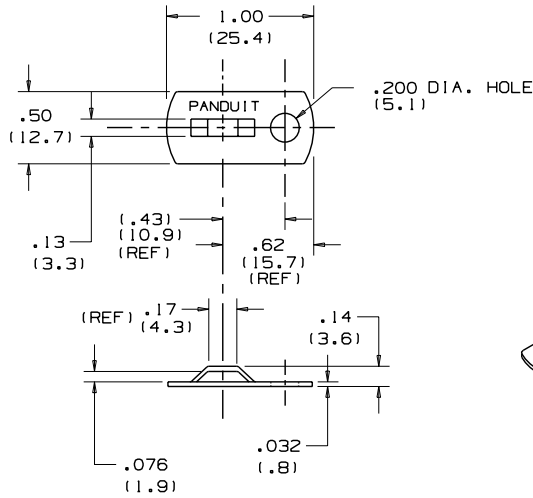
Stocking Distributor

Click to view price, real time Inventory, Delivery & Lifecycle Information:

[Panduit](#)
[MBMS-S10-CY](#)

For any questions, you can email us directly:
sales@integrated-circuit.com

THIS COPY IS PROVIDED ON A RESTRICTED BASIS AND IS NOT TO BE USED IN ANY WAY DETRIMENTAL TO THE INTERESTS OF PANDUIT CORP.



PANDUIT PART NUMBER*	WEIGHT lbs/100 pcs (g)/100 pcs	USE WITH ANY OF THESE CABLE TIE CROSS-SECTIONS	MAX. SCREW SIZE
MBMS-S10Y	.123 (55.8)	MINIATURE INTERMEDIATE STANDARD	#10 (M5)

NOTES:

1. SEE CURRENT PRICE SHEET FOR PART NUMBER SUFFIX DESIGNATION FOR PACKAGE SIZE.
2. MATERIAL: ALUMINUM ALLOY - 3003-H14 (HALF HARD, TEMPER).
3. FINISH: RoHS COMPLIANT TCP COATING CORROSION RESISTANCE: 168 HRS SALT SPRAY PER ASTM-B-117



DIMENSIONS IN BRACKETS ARE METRIC [mm]

CAD FILENAME/LAYERS



PANDUIT CORP. TINLEY PARK, ILLINOIS

MBMS-S10Y
METAL MOUNT

UNLESS OTHERWISE SPECIFIED,
DIMENSIONAL TOLERANCES ARE:
(.X) ±0.05 (1.3) (.XXX) ±0.010 (0.25)
(.XX) ±0.02 (0.5) ANGLES ± 5°

UNLESS OTHERWISE SPECIFIED,
ALL DIMENSIONS ARE GIVEN
IN INCHES, THIRD ANGLE PROJECTION.

DRAWN BY JAD

MAT'L:

SCALE NONE

DATE 7/27/06

SEE NOTE 2, 3

DRAWING NO.

GB0239LW

DWG
SIZE
A

REV	DATE	BY	CHK	DESCRIPTION	ECN	R	CUST	SUP
R	7/27/06	JAD		INITIAL RELEASE	GB0239LW	R		