

Excellent Integrated System Limited

Stocking Distributor

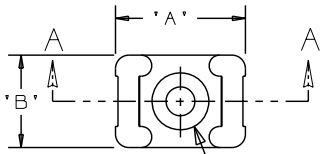
Click to view price, real time Inventory, Delivery & Lifecycle Information:

[Panduit](#)
[TM3S8-M69](#)

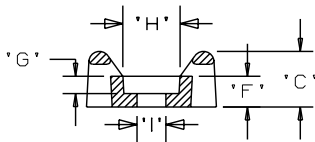
For any questions, you can email us directly:
sales@integrated-circuit.com

THIS COPY IS PROVIDED ON A RESTRICTED BASIS AND IS NOT TO BE USED IN ANY WAY DETRIMENTAL TO THE INTERESTS OF PANDUIT CORP.

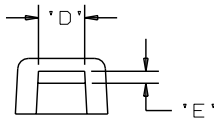
PANDUIT PART NO.**	RECOMMENDED FASTENER	*A*	*B*	*C*	*D*	*E*	*F*	*G* *REF*	*H* *REF*	*I* *REF*	USE WITH THESE CABLE TIE CROSS SECTIONS	WEIGHT (g) lbs/100 pcs.
TM3S8-_69	#8 (M4) SCREW	0.86 (21.8)	0.61 (15.5)	0.38 (9.5)	0.320 (8.17)	0.088 (2.2)	0.21 (5.3)	0.105 (2.7)	0.319	0.175	MINIATURE INTERMEDIATE STANDARD LT. HEAVY	0.369 (167.5)
TM3S10-_69	#10 (M5) SCREW				±.020 (.5)	±.020 (.5)		0.115 (2.9)	0.380	0.193		0.363 (165.0)



SEE NOTE 2



SECTION A-A



NOTES:

- *1. SEE CURRENT PRICE SHEET FOR PART NUMBER SUFFIX DESIGNATION FOR PACKAGE SIZE.
- 2. HOLE DIMENSIONS SHOULD ACCOMMODATE SPECIFIED RECOMMENDED FASTENER.

DIMENSIONS IN BRACKETS ARE METRIC (mm)

CAD FILENAME/LAYERS

G00239MW_PB_TM3S69_00



TINLEY PARK, ILLINOIS

TM3S__-_69 - TIE MOUNT
FLAME RETARDANT NYLON

UNLESS OTHERWISE SPECIFIED,
DIMENSIONAL TOLERANCES ARE:
(.X) ±0.05 (1.3) (,XXX) ±0.010 (0.25)
(.XX) ±0.02 (0.5) ANGLES ±5°

UNLESS OTHERWISE SPECIFIED,
ALL DIMENSIONS ARE GIVEN
IN INCHES, THIRD ANGLE
PROJECTION.

DRAWN BY

DJSM

MAT'L:

FLAME
RETARDANT
NYLON

SCALE

NONE

DATE

4/4/07

DRAWING NO.

GB0239MW

CHK'D

DWG

A

SIZE

REV	DATE	BY	CHK	DESCRIPTION	ECN	R	CUST	SUP
R	4/4/07	DJSM		INITIAL DRAWING -- PULLED FROM G00239EN_PB_TM3S_10	GB0239MW	R		