

Excellent Integrated System Limited

Stocking Distributor

Click to view price, real time Inventory, Delivery & Lifecycle Information:

[FCI](#)

[51752-025LF](#)

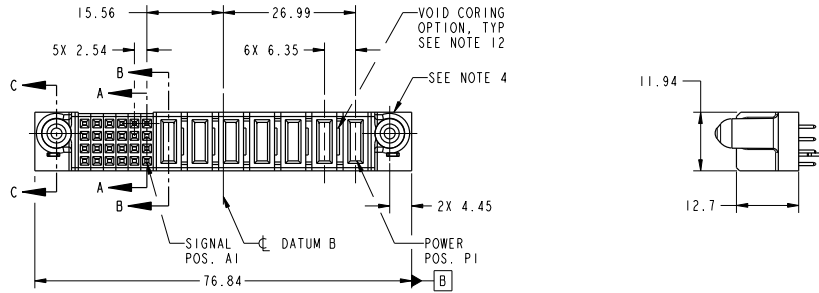
For any questions, you can email us directly:

sales@integrated-circuit.com

Tous droits strictement réservés. Reproduction ou communication à des tiers interdite sans aucune forme que ce soit sans autorisation écrite du propriétaire. Propriété de FCI. Droits de reproduction FCI.

All rights strictly reserved. Reproduction or issue to third parties in any form whatever is not permitted without written authority from the proprietor. Property of FCI. Copyright FCI.

PRODUCT NO.	ROWS	SIGNAL				POWER							
		E2	1	2	3	P7	P6	P5	P4	P3	P2	P1	E1
51752-025- NOTE: 3	HA	HA	HA	HA	HA	PA	PA	PA	PA	PA	PA	PA	HA



CODE	DIM "M" MATING LENGTH	CONTACT TYPE
E	[N/A]	SIGNAL
PA	[1.07]	POWER
HA	[N/A]	HOLD-DOWN

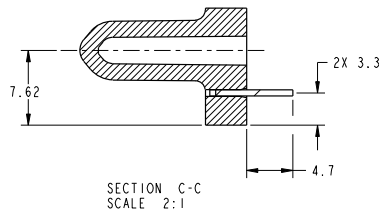
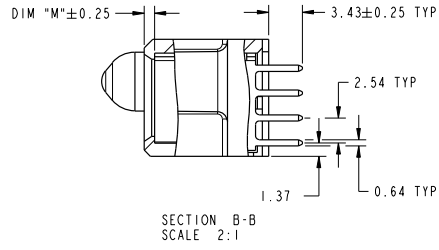
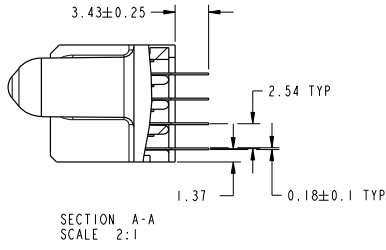
mat'l code				SEE NOTES	tolerances unless otherwise specified	CUSTOMER	FCI
lfr	ecm no.	dr	date	linear	0.X ±0.5	COPY	www.fciconnect.com
A	DG08-0119	JC	05/20/08		0.XX ±0.25	projection	
				angles	0.XXX ±0.1		title
				dr	0° ±2°	MM	7P + 24S
				engr	Jerome Chen 04/17/08	scale	VERTICAL SOLDER RECEPT
				chr	Jerome Chen 04/17/08	1:1	product family
				oppd	Gary Hsieh 04/17/08		PwrBlade
					Joseph Hsiao 04/17/08		code
sheet index	revision sheet	A	A	A	A		size
		1	2	3	4		dwg no
							A
							51752-025
							code
							213
							sheet
							1 of 4

Tous droits strictement réservés. Reproduction ou communication à des tiers interdite sous quelque forme que ce soit sans autorisation écrite du propriétaire. Propriété de FCI. Droits de reproduction FCI.

All rights strictly reserved. Reproduction or issue to third parties in any form whatever is not permitted without written authority from the proprietor. Property of FCI. Copyright FCI.



PRODUCT NUMBER
51752-025..
NOTE: 3



mat'l code				tolerances unless otherwise specified		CUSTOMER		FCI	
ltr	ecm no.	dr	date	linear	0.X ±0.5	COPY		www.fciconnect.com	
A					0.XX ±0.25	projection	title		7P + 24S
					0.XXX ±0.1		VERTICAL SOLDER RECEPT		
				angles	0° ±2°		product family	PwrBlade	code
		dr	Jerome Chen	04/17/08		scale	size	dwg no	213
		eng	Jerome Chen	04/17/08		1:1	A	51752-025	sheet
		chr	Gary Hsieh	04/17/08					2 of 4
		appd	Joseph Hsiao	04/17/08					
sheet index	revision sheet								

Pro/E

code code 22526

PDM: Rev:A

STATUS: **Released**

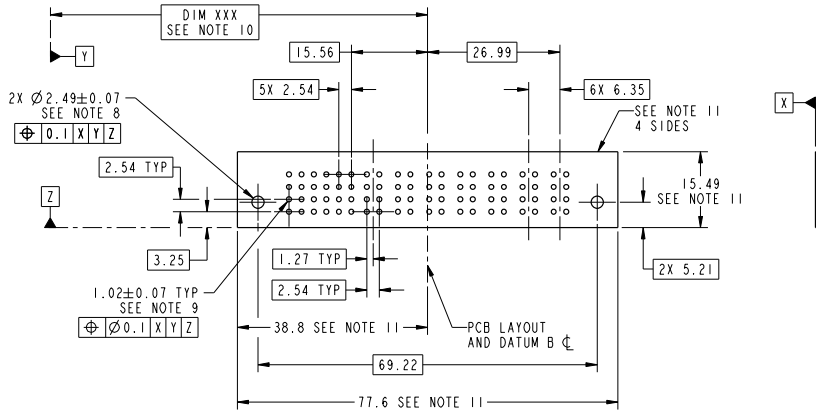
Printed: Dec 20, 2010

Tous droits strictement réservés. Reproduction ou communication à des tiers interdite sans aucune forme que ce soit sans autorisation écrite du propriétaire. Propriété de FCI. Droits de reproduction FCI.



All rights strictly reserved. Reproduction or issue to third parties in any form whatever is not permitted without written authority from the proprietor. Property of FCI. Copyright FCI.

PRODUCT NUMBER
51752-025..
NOTE: 3



RECOMMENDED PCB LAYOUT

mat'l code				tolerances unless otherwise specified		CUSTOMER		FCI	
lfr	ecm no.	dr	date	linear	0.X ±0.5	COPY	www.fciconnect.com		
A					0.XX ±0.25	projection	title	7P + 24S	
				angles	0° ±2°		VERTICAL SOLDER RECEPT		
				dr	Jerome Chen 04/17/08	MM	product family	PwrBlade	code
				eng	Jerome Chen 04/17/08	scale	size	dwg no	213
				chr	Gary Hsieh 04/17/08	1:1	A	51752-025	sheet
				appd	Joseph Hsiao 04/17/08				3 of 4
sheet index	revision sheet								

Pro/E

code code 22526

PDM: Rev:A

STATUS: Released

Printed: Dec 20, 2010

Tous droits strictement réservés. Reproduction ou communication à des tiers interdite sous quelque forme que ce soit sans autorisation écrite du propriétaire. Propriété de FCI. Droits de reproduction FCI.

All rights strictly reserved. Reproduction or issue to third parties in any form whatever is not permitted without written authority from the proprietor. Property of FCI. Copyright FCI.

PRODUCT NUMBER
 51752-025-
 NOTE: 3

NOTES:

1. DIMENSIONS AND TOLERANCES ARE IN ACCORDANCE WITH ASME Y14.5M, 1994 UNLESS OTHERWISE SPECIFIED.

CONNECTOR NOTES:

- ② HOUSING MATERIAL: UL 94 V-0 GLASS FILLED HIGH-TEMP THERMOPLASTIC
 POWER CONTACT MATERIAL: COPPER ALLOY
 SIGNAL PIN MATERIAL: COPPER ALLOY
 - 3. PLATING SPEC.
 51752-025, 51752-025LF PLATING SPEC. WAS SHOWN IN THE PRINT OF 10064183.
 - ④ MANUFACTURER'S NAME, P/N, AND DATE CODE TO APPEAR ON THIS SURFACE.
 - 5. PRODUCT SPECIFICATION GS-12-149.
 APPLICATION SPECIFICATION BUS-20-067.
 - 6. PACKAGED IN TRAYS.
- PCB NOTES:
- 7. ALL HOLE DIAMETERS ARE FINISHED HOLE SIZE.
 - ⑧ MOUNTING HOLES, WHERE APPLICABLE, ARE UNPLATED.
 - ⑨ $\varnothing 1.151 \pm 0.025$ DRILLED HOLES PLATED WITH 0.008 MIN SnPb OR Sn OVER 0.03 TO 0.08 Cu PLATING TO ACHIEVE $\varnothing 1.02 \pm 0.07$ HOLE.
 - ⑩ "DIM XXX" TO BE DETERMINED BY THE CUSTOMER.
 - ⑪ CONNECTOR KEEP-OUT ZONE.
12. THE VOID CORING IN BETWEEN POWER MODULES, SIGNAL MODULES AND END MODULES ARE OPTIONAL AND THE SHAPE MAY BE DIFFERENT FOR OPTIMIZE THE MOLDING PROCESS. THE VOID CORING WILL NOT EFFECT TO PRODUCT FUNCTION.

mat'l code				tolerances unless otherwise specified		CUSTOMER		FCI	
ltr	ecm no.	dr	date	linear	0.X ± 0.5	COPY		www.fciconnect.com	
A					0.XX ± 0.25	projection	title		
				angles	0.XXX ± 0.1		7P + 24S		
				dr	0° ± 2°	MIM	VERTICAL SOLDER RECEPT		
				eng	Jerome Chen 04/17/08	scale	product family	PwrBlade	code
				chr	Jerome Chen 04/17/08	1:1	size	dwg no	213
				appd	Gary Hsieh 04/17/08		A	51752-025	sheet
					Joseph Hsia 04/17/08				4 of 4
sheet index	revision sheet								

Pro/E

code code 22526

PDM: Rev:A

STATUS: Released

Printed: Dec 20, 2010