

## **Excellent Integrated System Limited**

Stocking Distributor

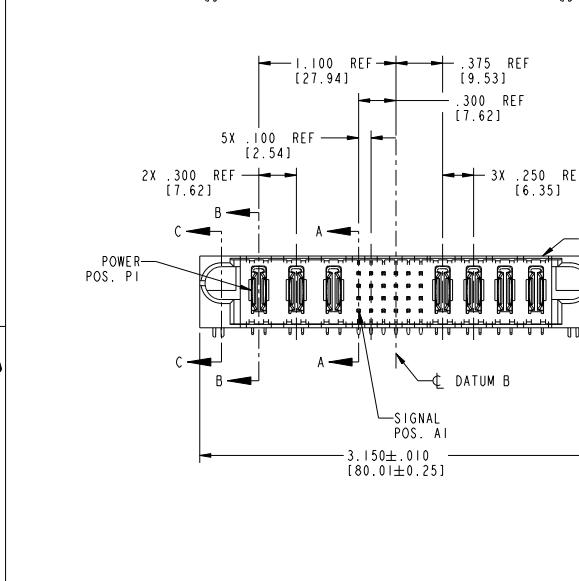
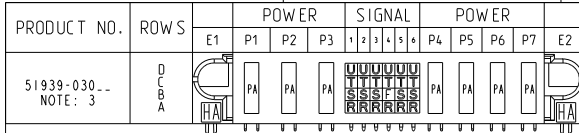
Click to view price, real time Inventory, Delivery & Lifecycle Information:

[FCI](#)  
[51939-030LF](#)

For any questions, you can email us directly:  
[sales@integrated-circuit.com](mailto:sales@integrated-circuit.com)

Tous droits strictement réservés. Reproduction ou communication, en des lieux interdite sans aucune forme que ce soit sans autorisation écrite du propriétaire. Propriété de c FCI. Droits de reproduction FCI.

All rights strictly reserved. Reproduction or issue in any form wherever is not permitted without written authority from the proprietor. Property of FCI. Copyright FCI.



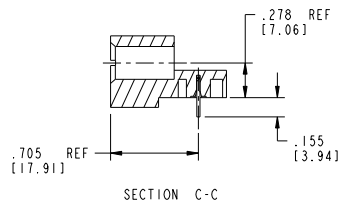
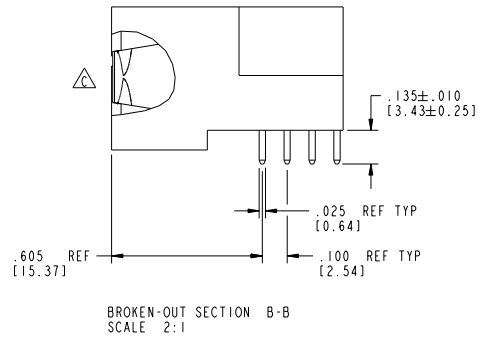
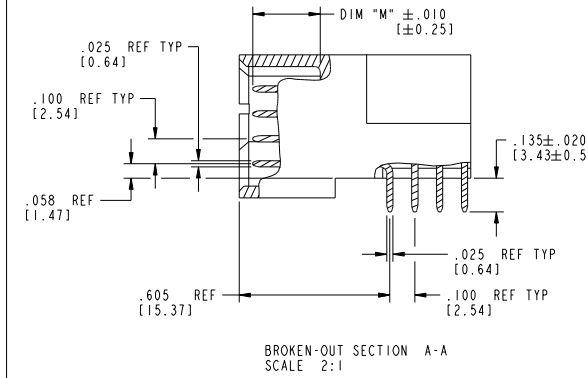
CODE	DIM "M" MATING LENGTH	CONTACT TYPE
F	.220 [5.59]	SIGNAL
R	.270 [6.86]	SIGNAL
S	.270 [6.86]	SIGNAL
T	.270 [6.86]	SIGNAL
U	.270 [6.86]	SIGNAL
PA	N/A [N/A]	POWER
HA	N/A [N/A]	HOLD-DOWN

mat'l code		SEE NOTE 2		tolerances unless otherwise specified	
ltr	ecm no.	dr	date	linear	XX±.01/0.XX+0.3
A	V21527	CGD	09/23/02		XXX±.005/0.XX+0.13
B	DG06-0008	JMG	01/09/06		XXX±.002/0.XX+0.051
C	DG10-0009	WD	12/25/09	angles	0°±
				dr	C. DAILY 09/24/02
				enr	M. MOSTOLLER 09/24/02
				chr	M. MOSTOLLER 09/24/02
				oppd	M. MOSTOLLER 09/24/02
sheet index	revision sheet	C	C	C	C
		1	2	3	4

CUSTOMER		FCI	
COPY		www.fciconnect.com	
projection	title	#	
INCH/MM	RIGHT ANGLE SOLDER HEADER		
scale	product family	PwrB	code
1:1	size	dwg no	213
	A	51939-030	sheet 1 of 4
		code code	22526

Tous droits strictement réservés. Reproduction ou communication de ces lignes infidèle sans aucune forme que ce soit sans autorisation écrite du propriétaire. Propriété de c FCI. Droits de reproduction FCI.

PRODUCT NUMBER  
51939-030...  
NOTE: 3



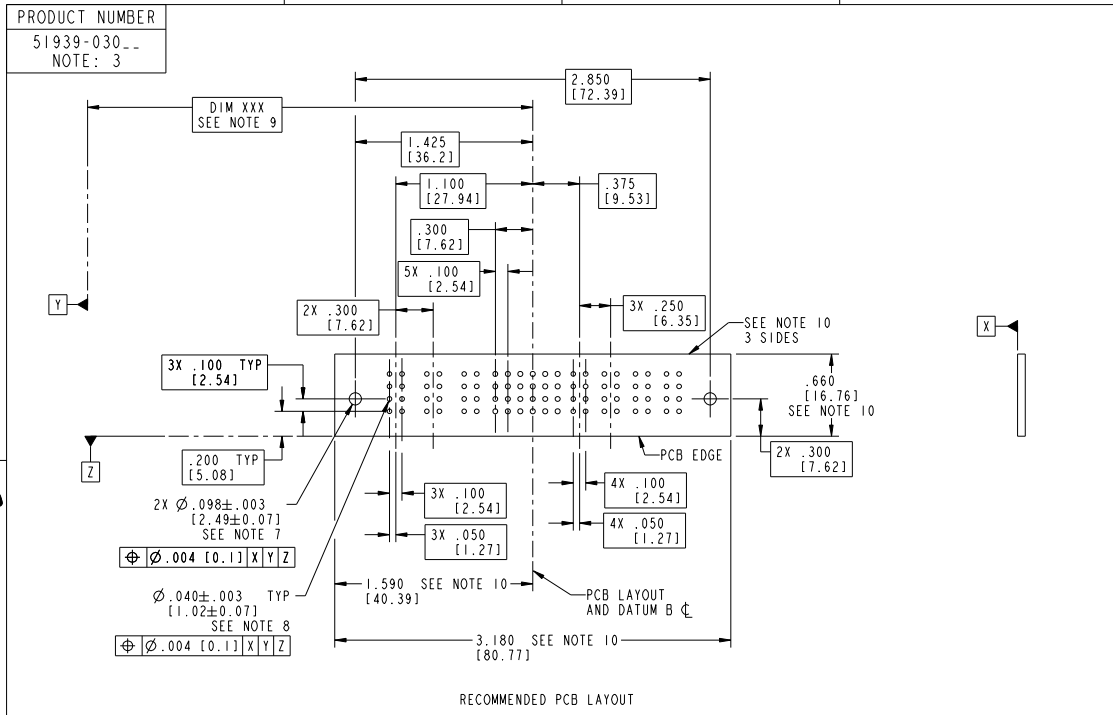
All rights strictly reserved. Reproduction or issue in any form without written authority from the proprietor. Property of FCI. Copyright FCI.

mat'l code		SEE NOTE 2	tolerances unless otherwise specified		CUSTOMER	<b>FCI</b>		www.fciconnect.com	
ltr	ecm no.	dr	date	linear	XX±.01/0.XX±0.3	COPY		title	
C				angles	XXX±.005/0.XX±0.13	projection		RIGHT ANGLE SOLDER HEADER	
				dr	XXX±.002/0.XX±0.051	INCH/MM		product family PwrBlade	
				enr	C. DAILY 09/24/02	scale		size	
				chr	M. MOSTOLLER 09/24/02	1:1		dwg no	
				oppd	M. MOSTOLLER 09/24/02			51939-030	
sheet index	revision sheet							code	
								22526	

Tous droits strictement réservés. Reproduction ou communication, en des lieux interdite sans aucune forme que ce soit sans autorisation écrite du propriétaire. Propriété de c FCI. Droits de reproduction FCI.



All rights strictly reserved. Reproduction or issue in any form anywhere is not permitted without written authority from the proprietor. Property of FCI. Copyright FCI.



RECOMMENDED PCB LAYOUT

mat'l code		SEE NOTE 2	tolerances unless otherwise specified		CUSTOMER	FCI		www.fciconnect.com	
ltr	ecm no.	dr	date	linear	XX±.01/0.XY±0.3	COPY	projection	title #	
C				angles	XXX±.005/0.XY±0.13			RIGHT ANGLE SOLDER HEADER	
				dr	XXX±.002/0.XY±0.051			product	family
				enr	C. DAILY 09/24/02	INCH/MM		PwrBlade	code
				chr	M. MOSTOLLER 09/24/02	scale	1:1	size	dwg no
				oppd	M. MOSTOLLER 09/24/02			A	51939-030
sheet index	revision sheet								213
									3 of 4

Pro/E 3 cage code 22526 4

Tous droits strictement réservés. Reproduction ou communication, en tous lieux interdite sans aucune forme que ce soit sans autorisation écrite du propriétaire. Propriété de c FCI. Droits de reproduction FCI.



All rights strictly reserved. Reproduction or issue in any form wherever is not permitted without written authority from the proprietor. Property of FCI. Copyright FCI.

PRODUCT NUMBER  
51939-030...  
NOTE: 3

NOTES:

1. DIMENSIONS AND TOLERANCES ARE IN ACCORDANCE WITH ASME Y14.5M, 1994 UNLESS OTHERWISE SPECIFIED.

CONNECTOR NOTES:

- 2. HOUSING MATERIAL: UL 94 V-0 GLASS FILLED HIGH-TEMP THERMOPLASTIC  
POWER CONTACT MATERIAL: COPPER ALLOY  
SIGNAL PIN MATERIAL: COPPER ALLOY
  - 3. SEE ITEM 1 & 2 IN PRINT 10064183 FOR PLATING SPEC OF 51939-030 AND 51939-030LF RESPECTIVELY.
  - 4. MANUFACTURER'S NAME, DATE CODE AND OPTIONAL P/N TO APPEAR ON THIS SURFACE. THE P/N CAN BE OMITTED IF THERE IS NOT ENOUGH SPACE ON THIS SURFACE.
  - 5. PRODUCT SPECIFICATION GS-12-149.  
APPLICATION SPECIFICATION BUS-20-067.
- PCB NOTES:
- 6. ALL HOLE DIAMETERS ARE FINISHED HOLE SIZE.
  - 7. MOUNTING HOLES, WHERE APPLICABLE, ARE UNPLATED.
  - 8.  $\varnothing .0453 \pm .0010$  [1.151  $\pm$  0.025] DRILLED HOLES PLATED WITH .0003 [0.008] MIN SnPb OVER .001 [0.03] TO .003 [0.08] Cu PLATING TO ACHIEVE  $\varnothing .040 \pm .003$  [1.02  $\pm$  .07] HOLE.
  - 9. "DIM XXX" TO BE DETERMINED BY THE CUSTOMER.
  - 10. CONNECTOR KEEP-OUT ZONE.

mat'l code		SEE NOTE 2		tolerances unless otherwise specified		CUSTOMER		FCI		www.fciconnect.com	
ltr	ecm no.	dr	date	linear	$.XX \pm .01/0$ $.YY \pm 0.3$	COPY		projection		title	
C					$.XXX \pm .005/0$ $.YY \pm 0.13$					#	
				angles	$.XXX \pm .0020/0$ $.YY \pm 0.051$					RIGHT ANGLE SOLDER HEADER	
				dr	C. DAILY 09/24/02	INCH/MM		product family		PwrBlade	
				enrg	M. MOSTOLLER 09/24/02	scale		size		code	
				chr	M. MOSTOLLER 09/24/02	1:1		dwg no		213	
				oppd	M. MOSTOLLER 09/24/02			51939-030		sheet	
sheet index	revision sheet							A		4 of 4	

cage code 22526