

## **Excellent Integrated System Limited**

Stocking Distributor

Click to view price, real time Inventory, Delivery & Lifecycle Information:

[FCI](#)

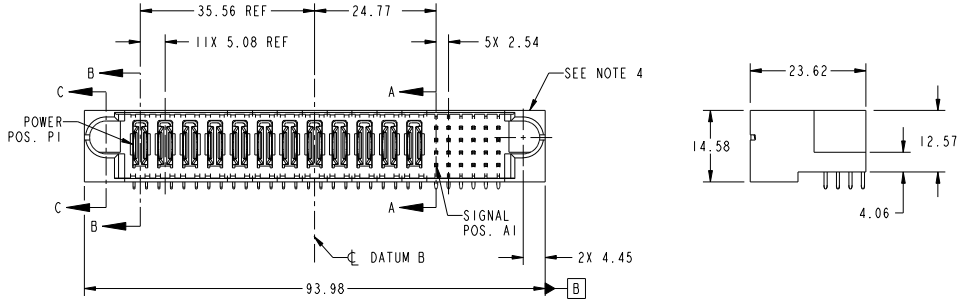
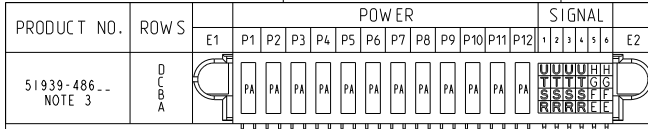
[51939-486LF](#)

For any questions, you can email us directly:

[sales@integrated-circuit.com](mailto:sales@integrated-circuit.com)

Tous droits strictement réservés. Reproduction ou communication à des tiers interdite sous quelque forme que ce soit sans autorisation écrite du propriétaire. Propriété de FCI. Droits de reproduction FCI.

All rights strictly reserved. Reproduction or issue to third parties in any form whatever is not permitted without written authority from the proprietor. Property of FCI. Copyright FCI.



CODE	DIM "M" MATING LENGTH	CONTACT TYPE
U	[6.86]	SIGNAL
T	[6.86]	SIGNAL
S	[6.86]	SIGNAL
R	[6.86]	SIGNAL
PA	[N/A]	POWER
H	[5.59]	SIGNAL
G	[5.59]	SIGNAL
F	[5.59]	SIGNAL
E	[5.59]	SIGNAL

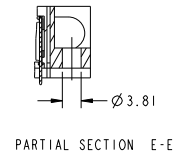
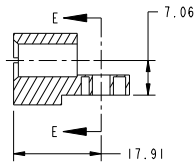
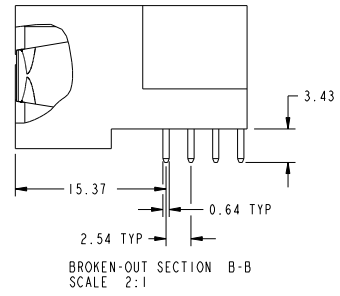
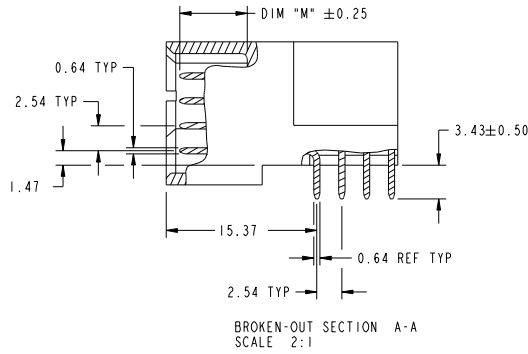
SEE NOTE				tolerances unless otherwise specified		CUSTOMER	
ltr	ecm no.	dr	date	0.X	+0.5	COPY	www.fciconnect.com
A	DG09-0365	WD	11/21/09	0.XX	+0.25	projection	title
				0.XXX	+0.1		12P + 24S RIGHT ANGLE SOLDER HEADER
				angles	0° ± 2°		product family PwrBlade
		dr	WARREN DU	11/10/09		size	code
		enr	WARREN DU	11/10/09		dwg no	213
		chr	PM ZHENG	11/10/09		51939-486	sheet
		oppd	JOSEPH HSTA	11/10/09		scale	1 of 4
sheet index	revision sheet	A	A	A	A		
		1	2	3	4		

cage code 22526

Tous droits strictement réservés. Reproduction ou communication à des tiers interdite sous quelque forme que ce soit sans autorisation écrite du propriétaire. Propriété de FCI. Droits de reproduction FCI.

All rights strictly reserved. Reproduction or issue to third parties in any form whatever is not permitted without written authority from the proprietor. Property of FCI. Copyright FCI.

PRODUCT NUMBER  
51939-486...  
NOTE: 3



SECTION C-C

mat'l code		SEE NOTE		tolerances unless otherwise specified		CUSTOMER	
ltr	ecm no.	dr	date	linear	0.X ±0.5	COPY	www.fciconnect.com
A					0.XX ±0.25	projection	title
				angles	0.XXX ±0.1		12P + 24S
				dr	0° ±2°	MM	RIGHT ANGLE SOLDER HEADER
				enr	WARREN DU 11/10/09	product family	PwrBlade
				chr	PM ZHENG 11/10/09	size	dwg no
				oppd	JOSEPH HSTA 11/10/09	scale	51939-486
sheet index	revision sheet					1:1	code
							213 sheet 2 of 4

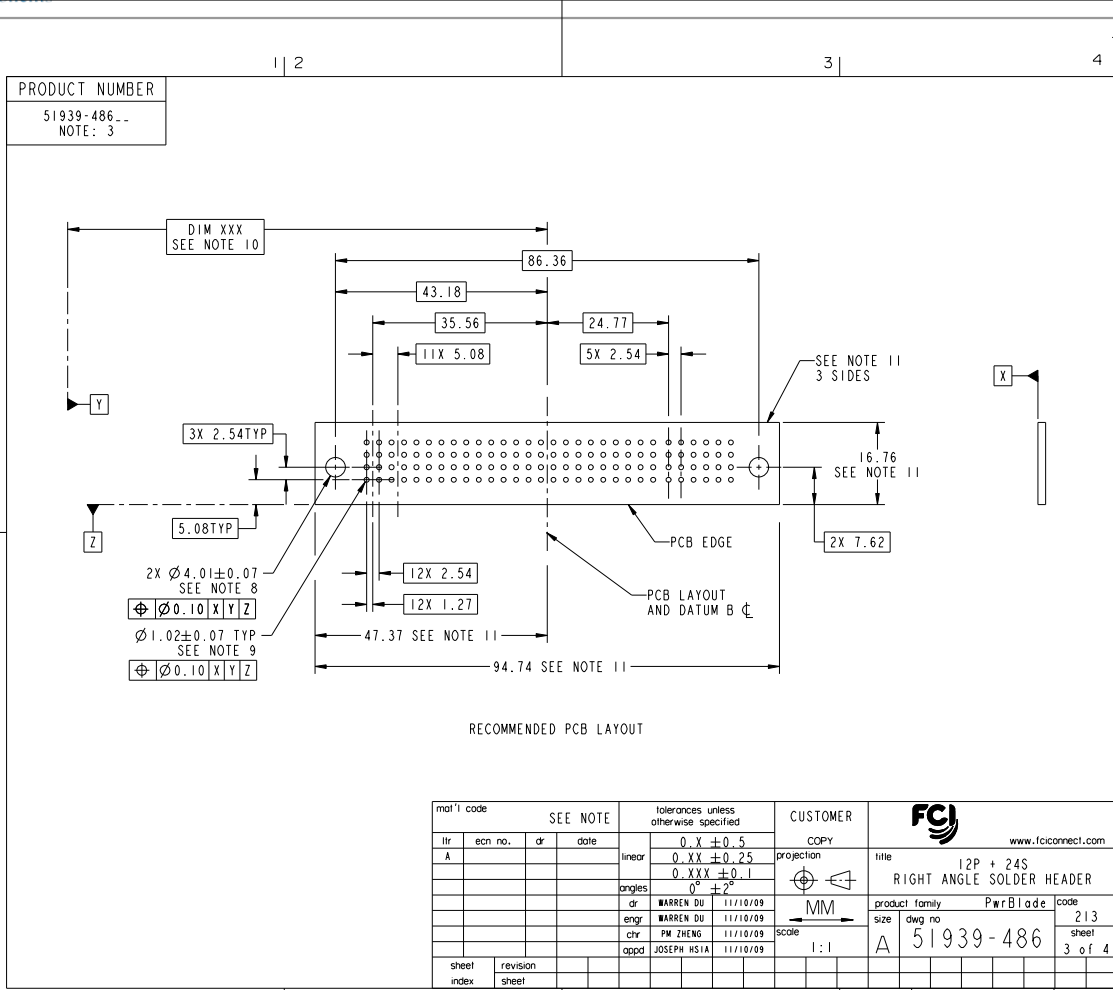
Pro/E

cage code 22526

Tous droits strictement réservés. Reproduction ou communication à des tiers interdite sous quelque forme que ce soit sans autorisation écrite du propriétaire. Propriété de FCI. Droits de reproduction FCI.



All rights strictly reserved. Reproduction or issue to third parties in any form whatever is not permitted without written authority from the proprietor. Property of FCI. Copyright FCI.



RECOMMENDED PCB LAYOUT

mat'l code		SEE NOTE		tolerances unless otherwise specified		CUSTOMER	
ltr	ecm no.	dr	date	linear	0.X ± 0.5	COPY	www.fciconnect.com
A					0.XX ± 0.25	projection	title
				angles	0.XXX ± 0.1		12P + 24S
					0° ± 2°	MM	RIGHT ANGLE SOLDER HEADER
				dr	WARREN DU 11/10/09	product family	PwrBlade
				enr	WARREN DU 11/10/09	size	dwg no
				chr	FW ZHENG 11/10/09	scale	51939-486
				oppd	JOSEPH HSIA 11/10/09	A	213
sheet index	revision sheet						3 of 4

Pro/E

cage code 22526

Tous droits strictement réservés. Reproduction ou communication à des tiers interdite sous quelque forme que ce soit sans autorisation écrite du propriétaire. Propriété de FCI. Droits de reproduction FCI.

All rights strictly reserved. Reproduction or issue to third parties in any form whatever is not permitted without written authority from the proprietor. Property of FCI. Copyright FCI.

PRODUCT NUMBER  
51939-486..  
NOTE: 3

NOTES:

1. DIMENSIONS AND TOLERANCES ARE IN ACCORDANCE WITH ASME Y14.5M, 1994 UNLESS OTHERWISE SPECIFIED.

CONNECTOR NOTES:

- 2. HOUSING MATERIAL: UL 94 V-0 GLASS FILLED HIGH-TEMP THERMOPLASTIC  
POWER CONTACT MATERIAL: COPPER ALLOY  
SIGNAL P-IN MATERIAL: COPPER ALLOY
  - 3. PLATING:  
SEE ITEM 1 & 2 IN PRINT 10064183 FOR PLATING SPEC OF 51939-486 AND 51939-486LF RESPECTIVELY.
  - 4. MANUFACTURER'S NAME, DATE CODE AND OPTIONAL P/N TO APPEAR ON THIS SURFACE. THE P/N CAN BE OMITTED IF THERE IS NOT ENOUGH SPACE ON THIS SURFACE.
  - 5. PRODUCT SPECIFICATION GS-12-149.  
APPLICATION SPECIFICATION BUS-20-067.
  - 6. PACKAGED IN TRAYS.
- PCB NOTES:
- 7. ALL HOLE DIAMETERS ARE FINISHED HOLE SIZE.
  - 8. MOUNTING HOLES, WHERE APPLICABLE, ARE UNPLATED.
  - 9.  $\varnothing 1.151 \pm 0.025$  DRILLED HOLES PLATED WITH 0.008 MIN SnPb OR Sn OVER 0.03 TO 0.08 Cu PLATING TO ACHIEVE  $\varnothing 1.02 \pm 0.07$  HOLE.
  - 10. "DIM XXX" TO BE DETERMINED BY THE CUSTOMER.
  - 11. CONNECTOR KEEP-OUT ZONE.

SEE NOTE				tolerances unless otherwise specified		CUSTOMER	
ltr	ecn no.	dr	date	linear	0.X ± 0.5	COPY	
A					0.XX ± 0.25	projection	title
				angles	0.XXX ± 0.1		12P + 24S
				dr	0° ± 2°		RIGHT ANGLE SOLDER HEADER
				enr	WARREN DU 11/10/09	product family	PwrBlade
				chr	WARREN DU 11/10/09	size	dwg no
				oppd	PM ZHENG 11/10/09	scale	51939-486
					JOSEPH HSIA 11/10/09	1:1	213
sheet index	revision sheet						sheet 4 of 4

cage code 22526