

Excellent Integrated System Limited

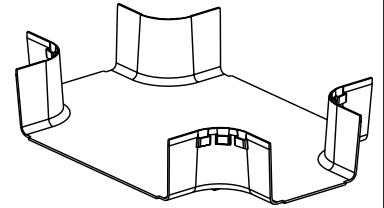
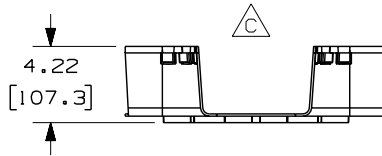
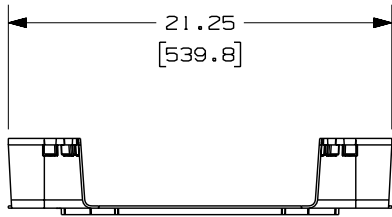
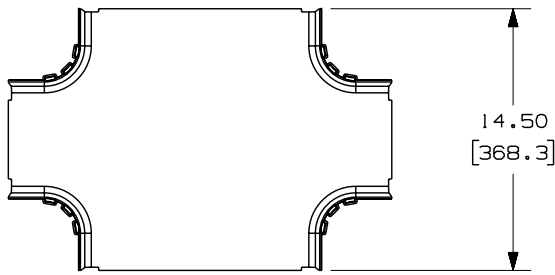
Stocking Distributor

Click to view price, real time Inventory, Delivery & Lifecycle Information:

[Panduit](#)
[FRFWC12X4W6BL](#)

For any questions, you can email us directly:
sales@integrated-circuit.com

THIS COPY IS PROVIDED ON A RESTRICTED BASIS AND IS NOT TO BE USED IN ANY WAY DETRIMENTAL TO THE INTERESTS OF PANDUIT CORP.



PANDUIT PART NUMBER	WEIGHT
FRFWC12X4W6	2.05 LB/EACH (929g/EACH)

NOTES:

- SEE CURRENT CATALOG FOR ADDITIONAL PART SUFFIXES TO INDICATE COLOR AND/OR PACKAGE QUANTITY.
- THE FIBERRUNNER 12x4 FOUR-WAY CROSS WITH 6" EXITS IS DESIGNED WITH A MINIMUM 2" (50.8) BEND RADIUS TO PROTECT FIBER OPTIC CABLES.
- DIMENSIONS IN PARENTHESES ARE IN METRIC.

ENG. REF.: D37617CA_DC_FRFWC12X4W6_01.prt

CAD FILENAME/LAYERS		△ FRFWC12X4W6.pdf	
PANDUIT CORP TINLEY PARK, ILLINOIS		FIBERRUNNER 12x4 FOUR-WAY CROSS WITH 6" EXITS (FRFWC12X4W6)	
		CUSTOMER DRAWING	
		UNLESS OTHERWISE SPECIFIED, DIMENSIONAL TOLERANCES ARE: (.X) ± (XXX) ± (.XX) ±.03 (.8) ANGLES ±	
UNLESS OTHERWISE SPECIFIED, ALL DIMENSIONS ARE GIVEN IN INCHES, THIRD ANGLE PROJECTION.		SCALE	NONE
REV	DATE	BY	CHK'D
1	6-28-06	DTP	JHNU
R	1-3-01	JHNU	HIW
REV	DATE	BY	CHK'D
1	6-28-06	DTP	JHNU
R	1-3-01	JHNU	HIW

REV	DATE	BY	CHK	DESCRIPTION	ECN	R	CUST	SUP	GMBH
-	-----	---	---	D. REVISED GENERAL NOTES C. ADDED RIGHT SIDE VIEW	-----	--	--		
1	6-28-06	DTP	RN	B. REVISED PART WEIGHT A. REVISED CAD FILENAME	37617-75	RN	RN		
R	1-3-01	JHNU	CEO	RELEASED TO PRODUCTION	37617-75	HIW	HIW		