

Excellent Integrated System Limited

Stocking Distributor

Click to view price, real time Inventory, Delivery & Lifecycle Information:

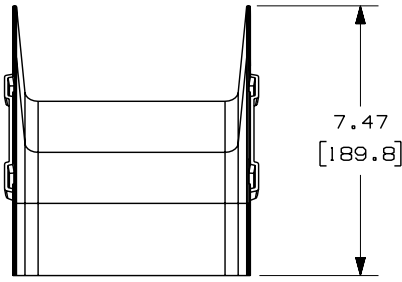
[Panduit](#)

[FROV456X4BL](#)

For any questions, you can email us directly:

sales@integrated-circuit.com

THIS COPY IS PROVIDED ON A RESTRICTED BASIS AND IS NOT TO BE USED IN ANY WAY DETRIMENTAL TO THE INTERESTS OF PANDUIT CORP.

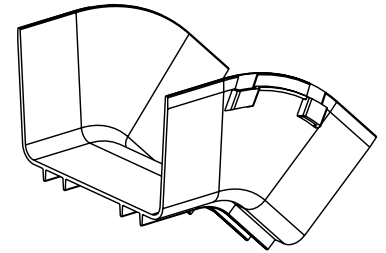
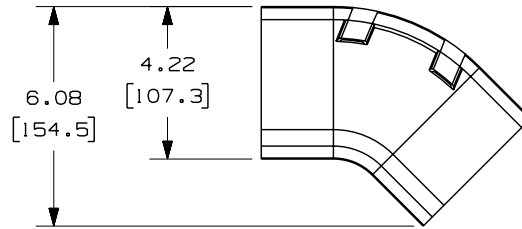
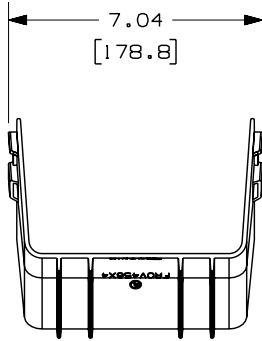


PANDUIT PART NUMBER	WEIGHT
FROV456X4	0.49 LB/EACH (220g/EACH)



NOTES:

- SEE CURRENT CATALOG FOR ADDITIONAL PART SUFFIXES TO INDICATE COLOR AND/OR PACKAGE QUANTITY.
- THE FIBERRUNNER 6x4 OUTSIDE VERTICAL 45° ANGLE FITTING IS DESIGNED WITH A MINIMUM 2" (50.8) BEND RADIUS TO PROTECT FIBER OPTIC CABLES.
- DIMENSIONS IN PARENTHESES ARE IN METRIC.



ENG. REF.: D37185EP_DC_FROV456X4_01.prt

CAD FILENAME/LAYERS: F\FROV456X4.pdf

										PANDUIT CORP TINLEY PARK, ILLINOIS				
										FIBERRUNNER 6x4 OUTSIDE VERTICAL 45° ANGLE FITTING (FROV456X4) CUSTOMER DRAWING				
										UNLESS OTHERWISE SPECIFIED, DIMENSIONAL TOLERANCES ARE: (.X) ± (XXX) ± (.XX) ±.03 (.8) ANGLES ±		UNLESS OTHERWISE SPECIFIED, ALL DIMENSIONS ARE GIVEN IN INCHES, THIRD ANGLE PROJECTION.		
-	-----	---	---	H. REVISED PART WEIGHT	-----	--	--			DRAWN BY	MAT'L:	SCALE	NONE	
-	-----	---	---	G. REVISED GENERAL NOTES F. REVISED CAD FILENAME	-----	--	--			REWE	ABS	DRAWING NO.	DWG	
2	7-6-06	DTP	RN	E. REVISED DRAWING TITLE D. REVISED AND REDRAWN	37185-62	RN	RN			DATE		5-1-00	37185-62	A
REV	DATE	BY	CHK	DESCRIPTION	ECN	R	CUST	SUP	GMBH	CHK'D	HIW		SIZE	