

Excellent Integrated System Limited

Stocking Distributor

Click to view price, real time Inventory, Delivery & Lifecycle Information:

[Panduit](#)
[PMR40BAL10](#)

For any questions, you can email us directly:
sales@integrated-circuit.com

Search Results

- Evaluate
 - FAQ's
- Design a Solution
 - Part Drawings
 - DWG-PMR40 Metal
 - PDF-PMR40 Metal
- How to Buy
 - Bill of Material
 - Favorite Products List
 - Locate Distributor

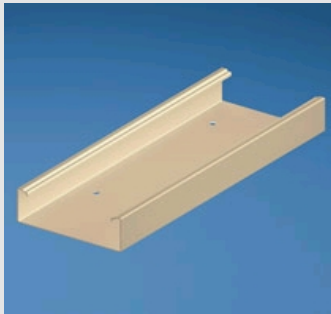
Home > Products Overview > Search Results >

Current refinements (click to remove) Search Tips

Text Search: 'PMR40BAL10'

Your search criteria matched only one product, shown below

PMR40BAL10



Pan-Way® PMR40 Metal Raceway is a multi-channel channel surface mounted solution for routing and terminating both electrical wire and data cable.

- c-UL-us listed and rated to 600V; meets UL5 and CSA22.2 No. 62 -93 safety standards
- Patent pending offset snap -on faceplate and divider wall design locates data terminations outside the data channel for greater cable capacity
- Fully compliant TIA/EIA 568B and 569B solution maintains a 2" bend radius throughout the system for routing high performance 10 Gigabit copper and fiber cable for reliable cable performance
- System accepts both snap -on and NEMA standard double gang faceplates, increasing versatility for termination of power and data cabling for increased termination options
- Pre-punched mounting holes eliminate the need to remove knockouts or drill holes for quick and easy installation

All AW (Arctic White) and two and three meter products are only available outside of North America as a standard item. Contact customer service for minimum order quantities, stock and

other color availability.

Part Number	PMR40BAL10
RoHS Compliance Status	Compliant
Part Description	PMR40 raceway base available in 10' lengths. Supplied with prepunched mounting holes.
Product Type	Power Rated
Material	Galvanized Steel
Color	Almond
Length (ft.)	10
Internal Area (in ²)	7.45" (189.2mm)
CE Compliant	No
Pricing Description	PMR40 Power Rated Multi Channel Metal Raceway Bas#0ft.
Product Length	10'
Product Size	40
Raceway Size	5.04" x 1.61" (128.0mm x 40.9mm)
Min. Order UOM	FT
Min. Order Qty.	50
BOM Qty. (# of Pkgs.)	<input type="text" value="0"/>
Add to Favorite Product List	<input type="button" value="e"/>

Please [register](#) to utilize the 'Bill of Materials', 'Submit Quotes' and 'Favorite Product List' features.