

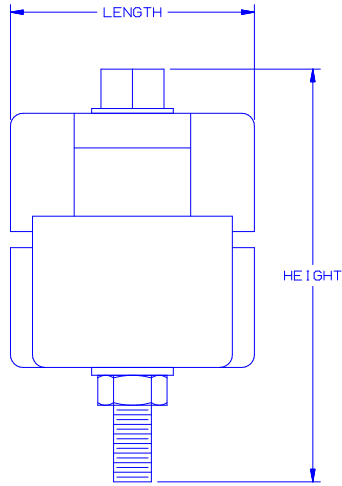
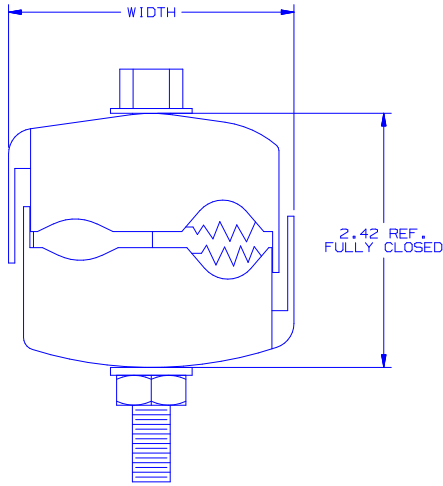
Excellent Integrated System Limited

Stocking Distributor

Click to view price, real time Inventory, Delivery & Lifecycle Information:

[Panduit](#)
[IPC500-250-2](#)

For any questions, you can email us directly:
sales@integrated-circuit.com



NOTES:

1. DUAL RATED FOR INSULATED COPPER AND ALUMINUM WIRE.
2. FOR OUTDOOR OR INDOOR INSTALLATION ON ENERGIZED CONDUCTOR (NOT UNDER LOAD).
3. MOLDED OF GLASS-FILLED NYLON FOR LONG LIFE
4. EXTRA HARD COPPER TEETH FOR PROPER PENETRATION.
5. USE AS TAP, SPLICE, OR DEAD END.
6. NO NEED TO STRIP INSULATION.



CATALOG NUMBER	VOLTS	COND. RANGE		CURRENT RATING		DIMENSIONS (IN)			RECOMM. TORQUE FT. LBS.	BOLT - NUT	NO. OF BOLTS
		RUN	TAP	CU	AL	WIDTH	HEIGHT	LENGTH			
IPC500-250-2	600	500-350	250-4	260	205	2.90	3.75	2.42	60	5/8 - 11/16	1

										DAD FILENAME/LAYERS		C41364_00							
										PANDUIT				CORP TINLEY PARK, ILLINOIS					
										INSULATION - PIERCING CONNECTOR				IPC500-250-2 CUSTOMER DRAWING					
										UNLESS OTHERWISE SPECIFIED, DIMENSIONAL TOLERANCES ARE: (.XX) ± (.XXX) ± (.XXX) ±		UNLESS OTHERWISE SPECIFIED, ALL DIMENSIONS ARE GIVEN IN INCHES, THIRD ANGLE PROJECTION							
										DRAWN BY	CJW	MAT'L:	NONE		SCALE				
										DATE	11/02	SEE NOTE #3	DRAWING NO.		C41364	DWG	B		
										REV	DATE	BY	CHK	DESCRIPTION		ECN	R	CUST	SUP
										00	11/02	CJW		DRAWING RELEASED					