

Excellent Integrated System Limited

Stocking Distributor

Click to view price, real time Inventory, Delivery & Lifecycle Information:

[Hirose Electric Co Ltd](#)
[3560-16P-PG](#)

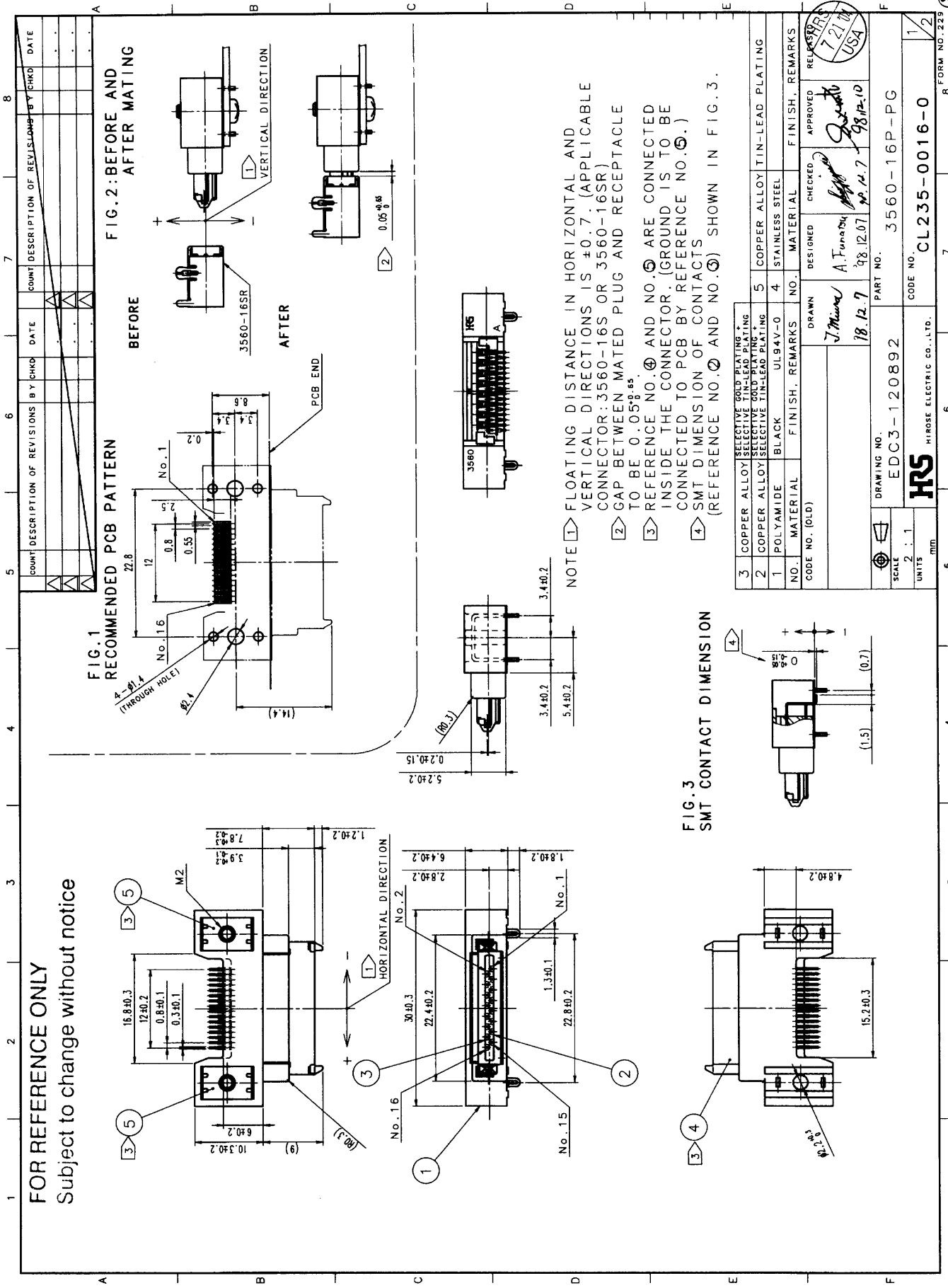
For any questions, you can email us directly:

sales@integrated-circuit.com

COUNT	DESCRIPTION OF REVISIONS	BY	CHKD	DATE	COUNT	DESCRIPTION OF REVISIONS	BY	CHKD	DATE
△					△				
△					△				
APPLICABLE STANDARD									
RATING	OPERATING TEMPERATURE RANGE	-40 °C TO +85°C			STORAGE TEMPERATURE RANGE	°C TO °C			
	VOLTAGE	AC 125 V			OPERATING HUMIDITY RANGE	% TO %			
	CURRENT	1 A			APPLICABLE CABLE				
SPECIFICATIONS									
ITEM		TEST METHOD			REQUIREMENTS			QT	AT
CONSTRUCTION									
GENERAL EXAMINATION		VISUALLY AND BY MEASURING INSTRUMENT.			ACCORDING TO DRAWING.			○	○
MARKING		CONFIRMED VISUALLY.						○	○
ELECTRIC CHARACTERISTICS									
CONTACT RESISTANCE		100 mA (DC OR 1000 Hz).			40 mΩ MAX.			○	○
INSULATION RESISTANCE		250 V DC.			1000 MΩ MIN.			○	-
VOLTAGE PROOF		350 V AC FOR 1 min.			NO FLASHOVER OR BREAKDOWN.			○	○
MECHANICAL CHARACTERISTICS									
INSERTION AND WITHDRAWAL FORCES		MEASURED BY APPLICABLE CONNECTOR.			INSERTION FORCE 29.4 N MAX. EXTRACTION FORCE 29.4 N MAX.			○	-
MECHANICAL OPERATION		20000 TIMES INSERTIONS AND EXTRACTIONS.			① CONTACT RESISTANCE: 60 mΩ MAX. ② NO DAMAGE, CRACK AND LOOSENESS, OF PARTS.			○	-
VIBRATION		FREQUENCY 10 TO 55 Hz, SINGLE AMPLITUDE 1.5 mm, - m/s ² AT 2 h, FOR 3 DIRECTIONS.			① NO ELECTRICAL DISCONTINUITY OF 10 μs. ② CONTACT RESISTANCE: 60 mΩ MAX. ③ NO DAMAGE, CRACK AND LOOSENESS, OF PARTS.			○	-
SHOCK		490 m/s ² DIRECTIONS OF PULSE 11 ms AT 3 TIME FOR 3 DIRECTION.						○	-
ENVIRONMENTAL CHARACTERISTICS									
RESISTANCE TO DRY HEAT		EXPOSED IN 85 °C, 500h.			① CONTACT RESISTANCE: 60 mΩ MAX. ② INSULATION RESISTANCE: 1000 MΩ MIN. ③ NO DAMAGE, CRACK AND LOOSENESS, OF PARTS.			○	-
RAPID CHANGE OF TEMPERATURE		TEMPERATURE -55→15~35 → 85 → 15~35 °C TIME 30 → 10~15 → 30 → 10~15 min UNDER 5 CYCLES.			① CONTACT RESISTANCE: 60 mΩ MAX. ② INSULATION RESISTANCE: 1000 MΩ MIN. ③ NO DAMAGE, CRACK AND LOOSENESS, OF PARTS.			○	-
DAMP HEAT (STEADY STATE)		EXPOSED AT 40 °C, 90~95 %, 96 h.			① CONTACT RESISTANCE: 60 mΩ MAX. ② INSULATION RESISTANCE: 1000 MΩ MIN. (AFTER DRY) ③ NO DAMAGE, CRACK AND LOOSENESS, OF PARTS.			○	-
CORROSION SALT MIST		EXPOSED IN 5 % SALT WATER SPRAY FOR 48 h.			① CONTACT RESISTANCE: 60 mΩ MAX. ② NO DAMAGE, CRACK AND LOOSENESS, OF PARTS.			○	-
HYDROGEN SULPHIDE		EXPOSED IN SO ₂ 10ppm, H ₂ S 3ppm, 70~80%, 96 h.						○	-
REMARKS									
FOR REFERENCE ONLY Subject to change without notice Unless otherwise specified, refer to JIS C 5402.					DRAWN	DESIGNED	CHECKED	APPROVED	RELEASED
					J. Minra	A. Funatsu			
					98.12.7	98.12.07	98.12.7	98.12.10	
Note QT: Qualification Test AT: Assurance Test ○: Applicable Test									
HRS HIROSE ELECTRIC CO., LTD.		SPECIFICATION SHEET			PART NO. 3560-16P-PG				
CODE NO.(OLD)	DRAWING NO.	CODE NO.							
CL	SLC4-120892	CL235-0016-0			1/1				

TO
Q1

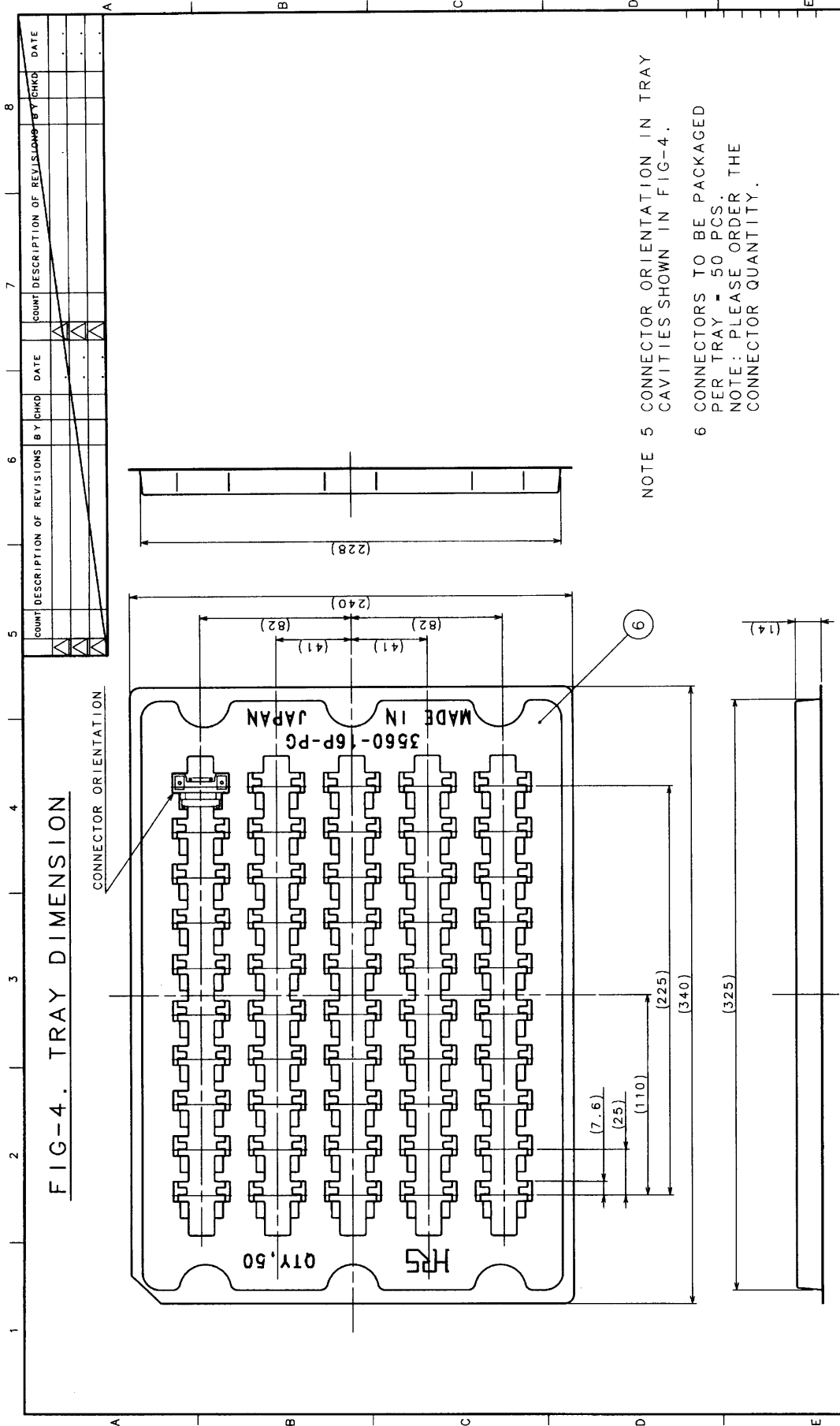




FOR REFERENCE ONLY
 Subject to change without notice

NOTE ① FLOATING DISTANCE IN HORIZONTAL AND VERTICAL DIRECTIONS IS ±0.7. (APPLICABLE CONNECTOR: 3560-16S OR 3560-16SR)
 ② GAP BETWEEN MATED PLUG AND RECEPTACLE TO BE 0.05^{±0.05}
 ③ REFERENCE NO. ④ AND NO. ⑤ ARE CONNECTED INSIDE THE CONNECTOR. (GROUND IS TO BE CONNECTED TO PCB BY REFERENCE NO. ⑤.)
 ④ SMT DIMENSION OF CONTACTS (REFERENCE NO. ④ AND NO. ⑤) SHOWN IN FIG. 3.

TO	
Q1	



PVC MATERIAL		FINISH. REMARKS		MATERIAL		FINISH. REMARKS	
NO.	MATERIAL	NO.	FINISH. REMARKS	NO.	MATERIAL	NO.	FINISH. REMARKS
6							
CODE NO. (OLD)		DRAWN		DESIGNED		CHECKED	
		J. Minami		A. Furuta		S. Ueda	
PACKAGING SPECIFICATION		98.12.7		98.12.7		98.12.10	
DRAWING NO.		EDC3-120892		PART NO.		3560-16P-PG	
SCALE		2:1		CODE NO.		CL235-0016-0	
UNITS		mm		FORM NO.		223	

FOR REFERENCE ONLY
 Subject to change without notice

TO	
?	