

Excellent Integrated System Limited

Stocking Distributor

Click to view price, real time Inventory, Delivery & Lifecycle Information:

[Molex Connector Corporation](#)
[0349501210](#)

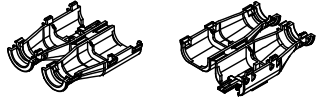
For any questions, you can email us directly:

sales@integrated-circuit.com

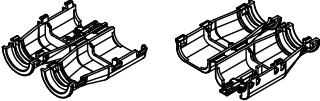
20 19 18 17 16 15 14 13 12 11 10 9 8 7 6 5 4 3 2 1

TABLE OF CONTENTS	
SHEET NO.	SHEET DESCRIPTION
1	NOTES AND BOM
2	CONFIGURATIONS
3	BACKSHELL DETAIL

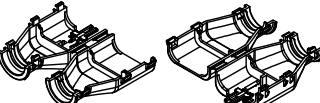
BILL OF MATERIALS (BOM)				
PART NUMBER	CIRCUIT SIZE	RBS	STATUS	MATING ASSEMBLY DRAWING
34950-0610	2X3	YES	SALEABLE	SD-33482-061
34950-0620	2X3	NO	SALEABLE	SD-33482-061
34950-0810	2X4	YES	DESIGN CONCEPT	SD-33482-081
34950-0820	2X4	NO	DESIGN CONCEPT	SD-33482-081
34950-1210	2X6	YES	SALEABLE	SD-33482-121
34950-1220	2X6	NO	SALEABLE	SD-33482-121



2X3 BLADE



2X4 BLADE



2X6 BLADE

BACKSHELL NOTES: VALID UNLESS OTHERWISE SPECIFIED

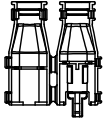
1. GENERAL:
 - a. APPLICATION SPECIFICATION SEE: AS-31951-001
 - DESIGNED TO MATE WITH RECEPTACLE SEALED ASSEMBLY AS SPECIFIED IN BOM
 - COMPONENTS ARE OPTIONAL AND MUST BE PURCHASED SEPARATELY
 - BACKSHELL DESIGN IS OWNED BY SChLEMMER
 - b. PRODUCT SPECIFICATION
 - THESE PRODUCTS ARE ONE TIME USE ONLY.
 - REMOVAL FORCE OF THE BACKSHELL FROM THE MOLEX CONNECTOR TO BE 100N MIN.
 - REMOVAL FORCE OF SLIT CONVOLUTE FROM THE WITH RB OPTION BACKSHELLS TO BE 100N MIN.
 - REMOVAL FORCE OF UNSLIT CONVOLUTE FROM THE WITH RB OPTION BACKSHELLS TO BE 100N MIN.
 - c. PACKAGING SPECIFICATION SEE PK-31902-118
 - d. PARTS MUST BE IN COMPLIANCE TO MOLEX CHEMICAL SUBSTANCES FOR PRODUCTS AND PACKAGING SPECIFICATION: OHS-69900-300
 - e. DATA MUST BE SUBMITTED UNDER THE MOLEX PART NUMBER TO IMDS (COMPANY ID#13255)
 - f. FOLLOWING PRODUCTION CODES TO BE PRESENT
 - DATE CODE
 - HOLD CAVITY CODE
 - MOLEX LOGO
 - RECYCLE CODE
 - SUPPLIER PART NUMBER
2. DESIGN - MATERIALS:
 - a. PA66 0% GLASS FILLED
 - b. BLACK
3. DESIGN GEOMETRY:
 - a. THIS IS A 100% CAD GENERATED PART. THE CAD MATHEMATICAL DATA IS THE MASTER FOR THIS PART. FOR DIMENSIONAL OR ANY INFORMATION NOT SHOWN ON THIS DRAWING, ANALYZE THE CAD MODEL.
 - b. GEOMETRIC DIMENSIONS AND TOLERANCES PER ASME Y14.5M - 2009
 - c. CORNERS SHOWN AS SHARP TO BE R 0.1.
 - d. VISUAL DEFECTS SHALL MEET COSMETIC STANDARD PS-45499-002 (CLASS BL)
 - e. DRAFT 2° PRESENT.
 - f. ALLOWABLE FLASH, PARTING LINES MISMATCH, EJECTOR PINS MARK, AND GATE VESTIGE TO BE +0.30 MAX PROTUSION.

A6	UPDATED BILL OF MATERIALS
A5	UPDATED STATUS COLUMN
A4	MINOR NOMENCLATURE CLEAN UP
A3	UPDATED VIEWSET & NOTES
A2	UPDATED REFERENCE DRAWINGS
A1	UPDATED NOTES
A	INITIAL RELEASE
REV	DESCRIPTION
SCALE	1:1
DESIGN UNITS	METRIC
THIRD ANGLE	PROJECTION

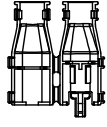
ENTER DESCRIPTION EC NO. VAL2015-1633 DRAWING NUMBER: 2015/05/11 CHKD: 349501210 APPR: MISHRA REV:	QUALITY SYMBOLS	GENERAL TOLERANCES (UNLESS SPECIFIED)	DIMENSION STYLE	DRAWN BY	DATE	TITLE
	▽=0	4 PLACES ±--- ±---	MM ONLY	DAHALL	2013/03/19	MX150 BLADE DUAL ROW BACKSHELL
	▽=0	3 PLACES ±--- ±---		CHECKED BY	DATE	
	▽=0	2 PLACES ±0.1 ±---		APPROVED BY	DATE	
▽=0	1 PLACE ±0.3 ±---		WKOSHY	2013/04/08		
		ANGULAR ± 3 °		MATERIAL NO.	DOCUMENT NO.	SHEET NO.
		DRAFT WHERE APPLICABLE MUST REMAIN WITHIN DIMENSIONS		SEE BOM	SD-34950-0001	1 OF 3
				THIS DRAWING CONTAINS INFORMATION THAT IS PROPRIETARY TO MOLEX INCORPORATED AND SHOULD NOT BE USED WITHOUT WRITTEN PERMISSION		

19 18 17 16 15 14 13 12 11 10 9 8 7 6 5 4 3 2 1

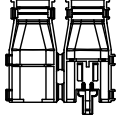
CONFIGURATIONS



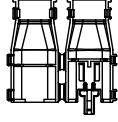
34950-0610
2X3 BLADE WITH RIBS



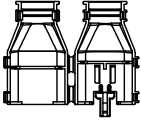
34950-0620
2X3 BLADE WITHOUT RIBS



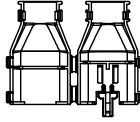
34950-0810
2X4 BLADE WITH RIBS



34950-0820
2X4 BLADE WITHOUT RIBS



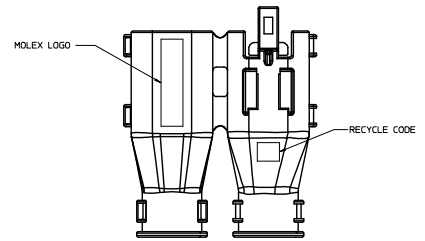
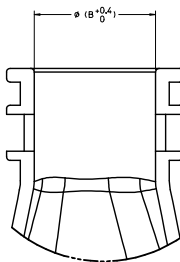
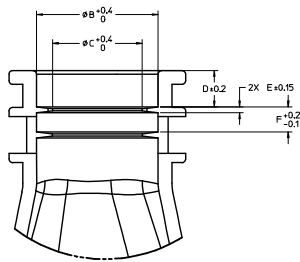
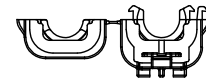
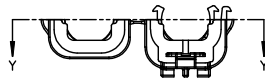
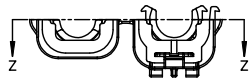
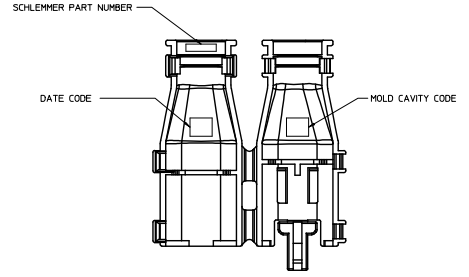
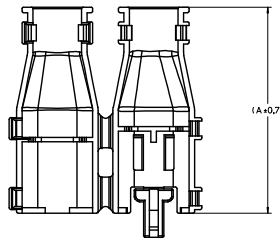
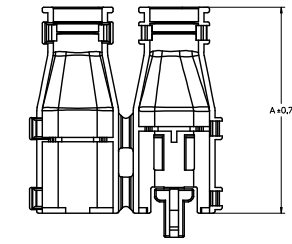
34950-1210
2X6 BLADE WITH RIBS



34950-1220
2X6 BLADE WITHOUT RIBS

ENTER DESCRIPTION EC NO. VAL2015-1693 DRAWN: RABUSZKA 2015/05/11 CHKD: APPR: MOJIB 2015/05/12 REV:	QUALITY SYMBOLS	GENERAL TOLERANCES (UNLESS SPECIFIED)	DRIMENSION STYLE	SCALE	DESIGN UNITS	THIRD ANGLE PROJECTION	
	∇=0 ∇=0 ∇=0	mm INCH 4 PLACES ± --- ± --- 3 PLACES ± --- ± --- 2 PLACES ± 0.1 ± --- 1 PLACE ± 0.3 ± --- 0 PLACE ± --- ± ---	MM ONLY 1:1 METRIC	DRAWN BY DATE DAHAL 2013/03/19 CHECKED BY DATE APPROVED BY DATE WKOSHY 2013/04/08	TITLE MX150 BLADE DUAL ROW BACKSHELL	MATERIAL NO. SEE BOM	DOCUMENT NO. SD-34950-0001
	ANGULAR ± 3 ° DRAFT WHERE APPLICABLE MUST REMAIN WITHIN DIMENSIONS	SIZE D	THIS DRAWING CONTAINS INFORMATION THAT IS PROPRIETARY TO MOLEX INCORPORATED AND SHOULD NOT BE USED WITHOUT WRITTEN PERMISSION	SHEET NO. 2 OF 3			
	15_1frame_01_P_Alt.T Rev. 5 2015/05/11						

BACKSHELL DETAIL



Partial Z-Z
SCALE 5:1
WITH RBS

Partial Y-Y
SCALE 5:1
WITHOUT RBS

PART NUMBER	DIMENSIONS					
	A	B	C	D	E	F
34950-0620	56	13.2	9.8	3.9	0.25	2.7
34950-0620	56	13.2	N/A	N/A	N/A	N/A
34950-1210	56	17.7	13.6	4.7	0.83	3.1
34950-1220	56	17.7	N/A	N/A	N/A	N/A

ENTER DESCRIPTION EC NO. VAL2005-1693 DRAWING NUMBER: 2015/05/11 CHKD: [blank] APPR: [blank] REV: [blank]	QUALITY SYMBOLS	GENERAL TOLERANCES (UNLESS SPECIFIED)	DIMENSION STYLE	SCALE	DESIGN UNITS	THIRD ANGLE PROJECTION	
	∇=0 ∇=0 ∇=0	mm INCH 4 PLACES ±--- ±--- 3 PLACES ±--- ±--- 2 PLACES ±0.1 ±--- 1 PLACE ±0.3 ±--- 0 PLACE ±--- ±---	MM ONLY 2:1 METRIC	DRAWN BY: DAHAL DATE: 2013/03/19 CHECKED BY: [blank] DATE: [blank] APPROVED BY: WKOSHY DATE: 2013/04/08			
		ANGULAR ± 3° DRAFT WHERE APPLICABLE MUST REMAIN WITHIN DIMENSIONS	SEE BOM THIS DRAWING CONTAINS INFORMATION THAT IS PROPRIETARY TO MOLEX INCORPORATED AND SHOULD NOT BE USED WITHOUT WRITTEN PERMISSION	MATERIAL NO.: [blank] DOCUMENT NO.: SD-34950-0001	MOLEX	SHEET NO.: 3 OF 3	