

Excellent Integrated System Limited

Stocking Distributor

Click to view price, real time Inventory, Delivery & Lifecycle Information:

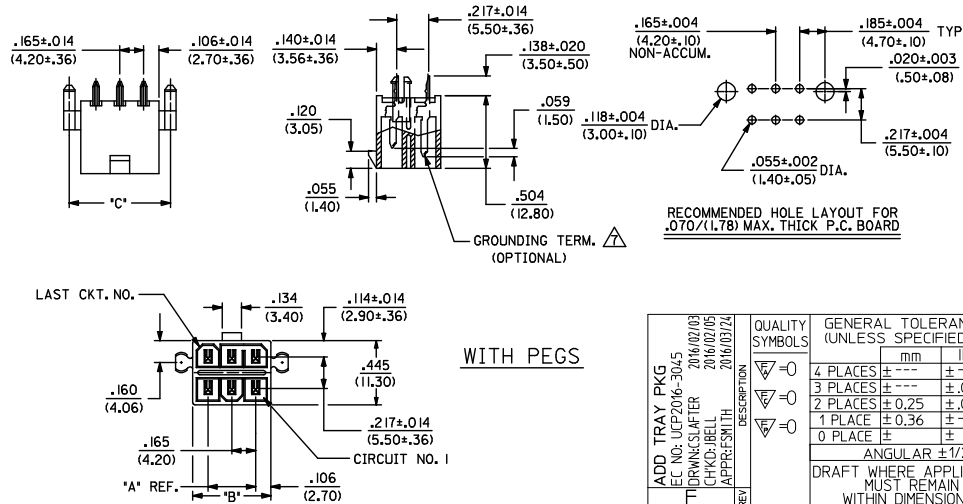
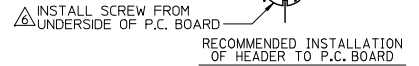
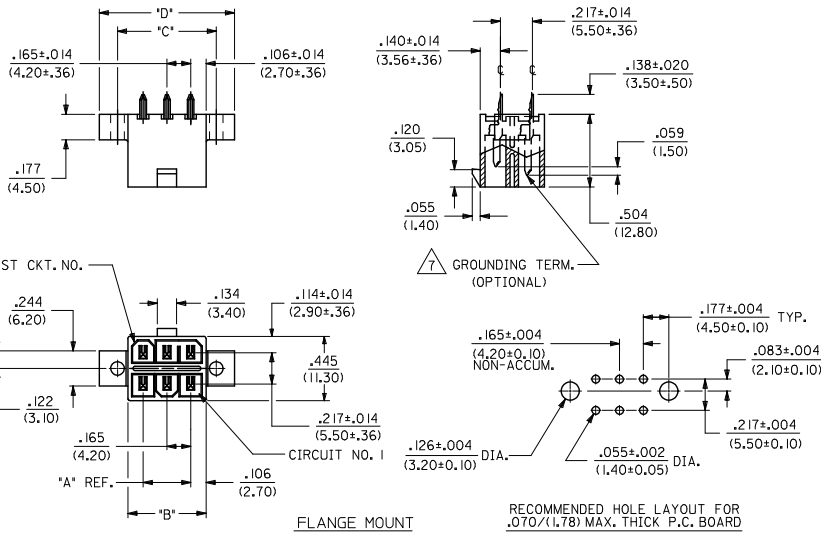
[Molex Connector Corporation](#)
[0444820005](#)

For any questions, you can email us directly:

sales@integrated-circuit.com

NOTES:

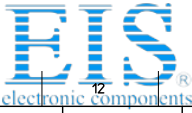
- HOUSING MAT'L.: POLYESTER, UNFILLED, 94V-0, COLOR: BLACK.
TERMINAL MATERIAL: BRASS ALLOY.
- PLATINGS:
2 = .000030/(.00076) MIN. SELECT GOLD AND .000100/(.00254) MIN. SELECT MATTE TIN OVER .000050/(.00127) MIN. NICKEL OVERALL.
3 = .000100/(0.00254) MIN. BRIGHT TIN OVER .000050/(0.00127) MIN. NICKEL OVERALL.
- PRODUCT SPECIFICATION: PS-5556-003.
- PACKAGING SPECIFICATION: BULK PER PK-30069-001.
TRAY PER 30069000-PK
- PART MATES WITH RECEPTACLE 30067-*.
⚠️ FLANGE MOUNT PART IS DESIGNED FOR USE WITH #4 OR M3 SELF TAPPING SCREWS.
- SEE CHART ON SHEET 3 FOR STD. TERMINAL, GROUNDING TERMINAL AND VOID LOCATIONS.
- PARTS ARE NOT TO BE MATED OR UNMATED WHILE CIRCUITS ARE LIVE.
- ITEM NUMBERS PRECEDED BY AN 'X' IN THE CHART ON SHEET 3 ARE NOT AVAILABLE.
- PART CONFORMS TO CLASS 'B' REQUIREMENTS OF COSMETIC SPECIFICATION PS-45499-002.



CKT. SIZE	LETTER DIMENSIONS FOR ASSEMBLIES WITH PEGS		
	DIM. 'A'	DIM. 'B'	DIM. 'C'
2	.213 (5.40)	.370 (9.40)	
4	.165 (4.20)	.378 (9.60)	.535 (13.60)
6	.331 (8.40)	.543 (13.80)	.701 (17.80)
8	.496 (12.60)	.709 (18.00)	.866 (22.00)
10	.661 (16.80)	.874 (22.20)	1.031 (26.20)
12	.827 (21.00)	1.039 (26.40)	1.197 (30.40)
14	.992 (25.20)	1.205 (30.60)	1.362 (34.60)
16	1.157 (29.40)	1.370 (34.80)	1.528 (38.80)

CKT. SIZE	LETTER DIMENSIONS FOR ASSEMBLIES WITH FLANGES			
	DIM. 'A'	DIM. 'B'	DIM. 'C'	DIM. 'D'
2	.213 (5.40)	.354 (9.00)	.606 (15.40)	
4	.165 (4.20)	.378 (9.60)	.712 (18.00)	.112 (2.80)
6	.331 (8.40)	.543 (13.80)	.885 (22.40)	.197 (5.00)
8	.496 (12.60)	.709 (18.00)	1.016 (25.80)	.268 (6.80)
10	.661 (16.80)	.874 (22.20)	1.166 (29.60)	.346 (8.80)
12	.827 (21.00)	1.039 (26.40)	1.433 (36.40)	.424 (10.80)
14	.992 (25.20)	1.205 (30.60)	1.598 (40.60)	.502 (12.80)
16	1.157 (29.40)	1.370 (34.80)	1.764 (44.80)	.580 (14.80)

ADD TRAY PKG EC NO: UCP2016-3045 DRAWING: 2016/02/03 CHKD: BELL APPROV: SMITH DATE: 2016/03/24	QUALITY SYMBOLS 0 0 0	GENERAL TOLERANCES (UNLESS SPECIFIED) mm INCH 4 PLACES ± .10 ± .010 3 PLACES ± .15 ± .015 2 PLACES ± 0.25 ± .014 1 PLACE ± 0.36 ± .014 0 PLACE ± .000 ± .000 ANGULAR ± 1/2° DRAFT WHERE APPLICABLE MUST REMAIN WITHIN DIMENSIONS	DIMENSION STYLE IN/MM SCALE 2:1 DESIGN UNITS METRIC THIRD ANGLE PROJECTION	DRAWN BY: GEP DATE: 1994/07/28 CHECKED BY: RJF DATE: 1994/07/28 APPROVED BY: FSMITH DATE: 2011/02/11	TITLE: VERT. HEADER ASSY., SELECTIVELY LOADED, MINI-FIT T.P.A. SERIES 	MATERIAL NO. SDA-44482-**** DOCUMENT NO. SDA-44482-**** SHEET NO. 1 OF 2
				THIS DRAWING CONTAINS INFORMATION THAT IS PROPRIETARY TO MOLEX INCORPORATED AND SHOULD NOT BE USED WITHOUT WRITTEN PERMISSION		
				SEE CHART		
				SIZE C		



Distributor of Molex Connector Corporation: Excellent Integrated System Limited

Datasheet of 0444820005 - MINIFIT VERT HDR ASSY 12CKT SEL

Contact us: sales@integrated-circuit.com Website: www.integrated-circuit.com

ITEM NO.	CHARACTERISTIC DESCRIPTION	TERMINAL VERSION REQUIRED AT EACH CIRCUIT LOCATION (SEE CODES AT RIGHT)																PACKAGING
		1	2	3	4	5	6	7	8	9	10	11	12	13	14	15	16	
44482-0001	I2A12	2	2	2	4	2	2	2	2	2	-	2	2					BULK
X 44482-0002	I2A22	2	2	2	4	2	2	2	2	2	2	2	2					BULK
																		BULK
44482-0004	12A12	2	2	2	4	2	2	2	2	2	2	2	-					BULK
44482-0005	12A12	2	2	2	4	2	2	2	2	2	-	2	-					BULK
44482-0006	16A13	5	5	5	-	5	5	5	5	5	5	5	5	5	5	5	5	BULK
44482-0007	16A13	5	5	5	5	5	5	5	5	5	-	5	5	5	5	5	5	BULK
44482-0008	12A12	2	-	2	2	2	2	2	2	2	2	2	2					BULK
44482-0009	12A12	2	2	2	4	-	2	2	2	2	-	2	-					BULK
44482-9901	12A12	2	2	2	4	2	2	2	2	2	-	2	2					BULK

TERM. I.D. CODES FOR CHART AT LEFT	
TERMINAL TYPE	PLATING (NOTE 2)
*1 = VOID LOC.	N/A
*2 = STD. TERM., SELECT. GOLD	2
*4 = GROUNDING TERM., SELECT. GOLD	2
*5 = STD. TERM. TIN	3
*6 = STD. GROUNDING TERM. TIN	3

SEE NOTE 9

CHARACTERISTICS LEGEND:

CIRCUIT SIZE (02-16)

HOUSING STYLE
A = FLANGES
C = PEGS

VOIDS
1 = WITH VOID
2 = W/O VOID

PLATING COMBINATIONS (SEE NOTE 2)
2 = SELECT GOLD
3 = OVERALL TIN

SEE SHEET 1 EC NO: UCP2016-3045 DRAWN BY: AFTER 2016/02/09 CHKD: BELL 2016/02/05 APPR: SMITH 2016/03/24	QUALITY SYMBOLS 	GENERAL TOLERANCES (UNLESS SPECIFIED)		DIMENSION STYLE		SCALE	DESIGN UNITS	THIRD ANGLE PROJECTION	
				IN/MM			METRIC		
		4 PLACES ±	mm	INCH	DRAWN BY	DATE	TITLE		
		3 PLACES ±	---	± .010	GEP	1994/07/28	VERT. HEADER ASSY., SELECTIVELY LOADED, MINI-FIT T.P.A. SERIES		
2 PLACES ±	0.25	± .014	RJF	1994/07/28					
1 PLACE ±	0.36	±	APPROVED BY	DATE					
0 PLACE ±	±	±	SMITH	2011/02/11	MATERIAL NO.	DOCUMENT NO.	SHEET NO.		
ANGULAR ±1/2°		SEE CHART		SDA-44482-****		2 OF 2			
DRAFT WHERE APPLICABLE MUST REMAIN WITHIN DIMENSIONS		THIS DRAWING CONTAINS INFORMATION THAT IS PROPRIETARY TO MOLEX INCORPORATED AND SHOULD NOT BE USED WITHOUT WRITTEN PERMISSION							