

Excellent Integrated System Limited

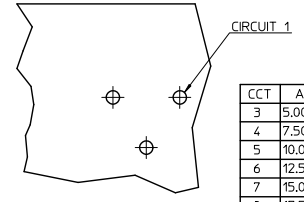
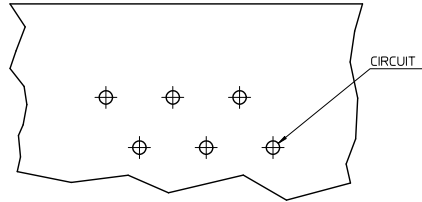
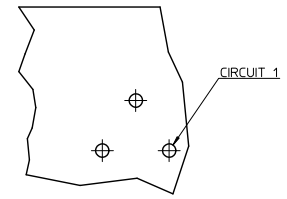
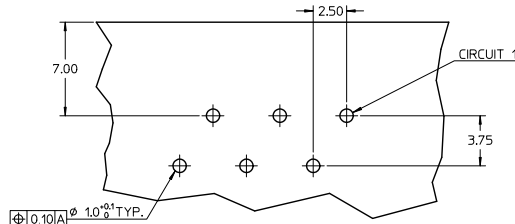
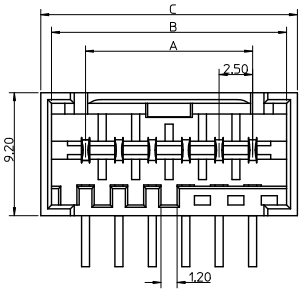
Stocking Distributor

Click to view price, real time Inventory, Delivery & Lifecycle Information:

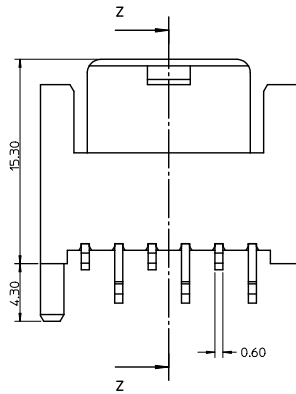
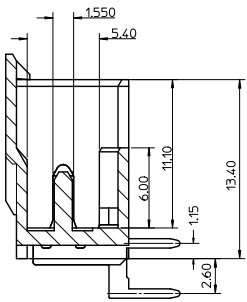
[Molex Connector Corporation](#)
[0932311703](#)

For any questions, you can email us directly:

sales@integrated-circuit.com



CCT	A	B	C
3	5.00	10.10	11.70
4	7.50	12.60	14.20
5	10.00	15.10	16.70
6	12.50	17.60	19.20
7	15.00	20.10	21.70
8	17.50	22.60	24.20
9	20.00	25.10	26.70
10	22.50	27.60	29.20
11	25.00	30.10	31.70
12	27.50	32.60	34.20
13	30.00	35.10	36.70
14	32.50	37.60	39.20
15	35.00	40.10	41.70



NOTES:

- MATERIAL: HOUSING - PA66 25% G/F, UL94 V-0
COLOUR: NATURAL
TERMINAL - BRASS
PLATING - 3-7um Sn over 1.27um Min Ni
- PARTS PACKED AS PER PK-93070-001
- PRODUCT SPECIFICATION: PS-93070-001
- RECOMMENDED PCB THICKNESS: 1.5+/-0.14mm

ADDED 93070-001 EC NO: E2011-0284 DRAWN: BGOUBEN CHKD: APPR: BMAGUIRE	2011/01/19 2011/10/05	QUALITY SYMBOLS ▽=0 ▽=0	GENERAL TOLERANCES (UNLESS SPECIFIED)		DIMENSION STYLE MM ONLY		SCALE 5:1	DESIGN UNITS METRIC	THIRD ANGLE PROJECTION
			mm	INCH	DRAWN BY TTOURISH	DATE 2008/03/14	TITLE RAST 2.5 APPLI-MATE RIGHT ANGLE MALE HEADER 2.5 PITCH		
A	REV	DESCRIPTION	4 PLACES ±---	±---	CHECKED BY BRUTTLE	DATE 2008/03/14	MOLEX INCORPORATED		
			3 PLACES ±0.05	±---	APPROVED BY BMAGUIRE	DATE 2011/10/05			
DRAFT WHERE APPLICABLE MUST REMAIN WITHIN DIMENSIONS			2 PLACES ±0.10	±---	MATERIAL NO. SEE SHEET 2&3		DOCUMENT NO. SD-93072-001	SHEET NO. 1 OF 4	
			1 PLACE ±0.20	±---	THIS DRAWING CONTAINS INFORMATION THAT IS PROPRIETARY TO MOLEX INCORPORATED AND SHOULD NOT BE USED WITHOUT WRITTEN PERMISSION				
			ANGULAR ± 2 °						

20 19 18 17 16 15 14 13 12 11 10 9 8 7 6 5 4 3 2 1

3 CIRCUIT

MOLEX PART NO.	BLOCKED POSITION KEYS	TERMINAL VOID POSITION	CONFIGURATION	LATCH	CCT 1 LOCATION
93072-0001	NONE	NONE		YES	STANDARD
93072-0002	b d	NONE		YES	STANDARD
93072-0003	b c	NONE		YES	STANDARD
93072-0004	d	NONE		YES	STANDARD
93072-0005	a	NONE		YES	STANDARD
93072-0006	a b	NONE		YES	STANDARD
93072-0007	a c	NONE		YES	STANDARD
93072-0008	a d	NONE		YES	STANDARD
93072-0009	c d	NONE		YES	STANDARD
93072-0010	b	NONE		YES	STANDARD
93072-0011	NONE	NONE		NO	STANDARD
93072-0012	b d	NONE		YES	STANDARD BLUE
93072-0013	b c	NONE		YES	STANDARD RED
93072-0014	d	NONE		YES	STANDARD GREEN
93072-0015	a	NONE		YES	STANDARD BLACK

4 CIRCUIT

MOLEX PART NO.	BLOCKED POSITION KEYS	TERMINAL VOID POSITION	CONFIGURATION	LATCH	CCT 1 LOCATION
93072-0501	NONE	NONE		YES	STANDARD
93072-0502	b c	NONE		YES	STANDARD
93072-0503	b c	CCT 4		YES	STANDARD
93072-0504	c d	NONE		YES	STANDARD
93072-0505	NONE	CCT 1		YES	STANDARD
93072-0601	b c	NONE		YES	OPPOSITE
93072-0506	b	NONE		YES	STANDARD
93072-0507	c	NONE		YES	STANDARD
93072-0508	d	NONE		YES	STANDARD
93072-0509	a c d	NONE		YES	STANDARD
93072-0510	b c d	NONE		YES	STANDARD
93072-0511	b c d	NONE		YES	STANDARD
93072-0512	d	NONE		YES	STANDARD RED

5 CIRCUIT

MOLEX PART NO.	BLOCKED POSITION KEYS	TERMINAL VOID POSITION	CONFIGURATION	LATCH	CCT 1 LOCATION
93072-1001	NONE	NONE		YES	STANDARD
93072-1002	c d	NONE		YES	STANDARD
93072-1003	a d f	NONE		YES	STANDARD
93072-1101	NONE	NONE		YES	OPPOSITE
93072-1004	d	NONE		YES	STANDARD
93072-1005	a b e f	NONE		YES	STANDARD
93072-1006	b c d e	NONE		YES	STANDARD
93072-1007	c d	NONE		YES	STANDARD RED
93072-1008	a b e f	NONE		YES	STANDARD BLUE
93072-1009	b c d e	NONE		YES	STANDARD GREEN

NOTES:
 1. + DENOTES TERMINAL VOIDED POSITION
 2. @ DENOTES TERMINAL LOADED POSITION

SEE SHEET 1 EC. NO. E201-0284 DRAWN: GOLDEN CHECKED: APPROVED: JURE DATE: 2011/10/05 DATE: 2011/10/05	QUALITY SYMBOLS	GENERAL TOLERANCES (UNLESS SPECIFIED)	DIMENSION STYLE	SCALE	DESIGN UNITS	THIRD ANGLE PROJECTION
	$\nabla=0$ $\nabla=0$	mm INCH 4 PLACES ±--- ±--- 3 PLACES ± 0.05 ±--- 2 PLACES ± 0.10 ±--- 1 PLACE ± 0.20 ±--- ANGULAR ± 2°	DRAWN BY: T. TOURISH DATE: 2008/03/14 CHECKED BY: DATE: BRITTLE 2008/03/14 APPROVED BY: DATE: BMAGUIRE 2011/10/05	1:1	METRIC	
	DRAFT WHERE APPLICABLE MUST REMAIN WITHIN DIMENSIONS	SEE CHARTS	TITLE: RAST 2.5 APPLI-MATE RIGHT ANGLE MALE HEADER 2.5 PITCH PARTIAL NO.: MOLEX INCORPORATED DOCUMENT NO.: SD-93072-001 SHEET NO.: 2 OF 4			
	THIS DRAWING CONTAINS INFORMATION THAT IS PROPRIETARY TO MOLEX INCORPORATED AND SHOULD NOT BE USED WITHOUT WRITTEN PERMISSION					

Rev. E 2008/03/15 19 18 17 16 15 14 13 12 11 10 9 8 7 6 5 4 3 2 1

20 19 18 17 16 15 14 13 12 11 10 9 8 7 6 5 4 3 2 1

6 CIRCUIT

MOLEX PART NO.	BLOCKED POSITION KEYS	TERMINAL VOID POSITION	CONFIGURATION	LATCH	CCT 1 LOCATION
93072-1501	NONE	NONE		YES	STANDARD
93072-1502	d f	CCT 2, 5		YES	STANDARD
93072-1503	c e	NONE		YES	STANDARD
93072-1505	d f	NONE		YES	STANDARD
93072-1506	b d f	CCT 4, 5		YES	STANDARD
93072-1507	NONE	CCT 2		YES	STANDARD
93072-1508	c f	CCT 2		YES	STANDARD
93072-1509	d	NONE		YES	STANDARD
93072-1510	a b c e f	NONE		YES	STANDARD
93072-1511	e f	NONE		YES	STANDARD
93072-1512	d f	NONE		YES	STANDARD GREEN

7 CIRCUIT

MOLEX PART NO.	BLOCKED POSITION KEYS	TERMINAL VOID POSITION	CONFIGURATION	LATCH	CCT 1 LOCATION
93072-2001	NONE	NONE		YES	STANDARD
93072-2002	a f	CCT 2, 6		YES	STANDARD
93072-2003	d g	CCT 4		YES	STANDARD
93072-2004	a e	CCT 4		YES	STANDARD
93072-2005	d f g	CCT 4		YES	STANDARD
93072-2006	a f	CCT 4		YES	STANDARD
93072-2007	a	NONE		YES	STANDARD
93072-2008	NONE	CCT 2		YES	STANDARD
93072-2009	a	CCT 4		YES	STANDARD
93072-2010	h	CCT 2		YES	STANDARD
93072-2011	b e g	NONE		YES	STANDARD
93072-2012	NONE	NONE		YES	STANDARD
93072-2007	h	CCT 2		YES	STANDARD

8 CIRCUIT

MOLEX PART NO.	BLOCKED POSITION KEYS	TERMINAL VOID POSITION	CONFIGURATION	LATCH	CCT 1 LOCATION
93072-2501	NONE	NONE		YES	STANDARD
93072-2502	c f h i	NONE		YES	STANDARD
93072-2503	b c d h i	CCT 4, 7		YES	STANDARD
93072-2601	NONE	CCT 4, 7		YES	OPPOSITE
93072-2504	b c d h i	NONE		YES	STANDARD

ENTER DESCRIPTION EC NO. E 2011-0284 DRAWN BY: D. WANG CHECKED BY: D. WANG APPROVED BY: D. WANG DATE: 2011/10/05	QUALITY SYMBOLS 0	GENERAL TOLERANCES (UNLESS SPECIFIED) 4 PLACES ± 0.25 3 PLACES ± 0.05 2 PLACES ± 0.10 1 PLACE ± 0.20 ANGULAR ± 2°	DIMENSION STYLE MM ONLY	SCALE 5:1	DESIGN UNITS METRIC	FIRST ANGLE PROJECTION	
	DRAWN BY: T. TOURISH DATE: 2008/03/14	CHECKED BY: DATE: 2008/03/14	APPROVED BY: DATE: 2011/10/05	MATERIAL NO.: SD-93072-001	DOCUMENT NO.: SD-93072-001	SHEET NO.: 3 OF 4	TITLE: RAST 2.5 APPLI-MATE RIGHT ANGLE MALE HEADER 2.5 PITCH
	DRAFT WHERE APPLICABLE MUST REMAIN WITHIN DIMENSIONS	SEE CHARTS	THIS DRAWING CONTAINS INFORMATION THAT IS PROPRIETARY TO MOLEX INCORPORATED AND SHOULD NOT BE USED WITHOUT WRITTEN PERMISSION	MOLEX INCORPORATED	MOLEX INCORPORATED	MOLEX INCORPORATED	MOLEX INCORPORATED
	MOLEX INCORPORATED						

19 18 17 16 15 14 13 12 11 10 9 8 7 6 5 4 3 2 1

9 CIRCUIT					
MOLEX PART NO.	BLOCKED POSITION KEYS	TERMINAL VOID POSITION	CONFIGURATION	LATCH	CCT 1 LOCATION
93072-3001	NONE	NONE		YES	STANDARD
93072-3002	ALL	CCT 2, 5, 8		YES	STANDARD
93072-3101	NONE	CCT 3, 5, 8		YES	OPPOSITE
93072-3003	c d e i j	CCT 3, 5, 8		YES	STANDARD
93072-3004	NONE	CCT 2, 5, 8		YES	STANDARD
93072-3005	b c d e f g i	CCT 3, 5, 8		YES	STANDARD

10 CIRCUIT					
MOLEX PART NO.	BLOCKED POSITION KEYS	TERMINAL VOID POSITION	CONFIGURATION	LATCH	CCT 1 LOCATION
93072-3501	NONE	NONE		YES	STANDARD
93072-3502	NONE	CCT 2, 5, 7, 9		YES	STANDARD
93072-3503	a b d e f g i j	NONE		YES	STANDARD

11 CIRCUIT					
MOLEX PART NO.	BLOCKED POSITION KEYS	TERMINAL VOID POSITION	CONFIGURATION	LATCH	CCT 1 LOCATION
93072-4001	NONE	NONE		YES	STANDARD

12 CIRCUIT					
MOLEX PART NO.	BLOCKED POSITION KEYS	TERMINAL VOID POSITION	CONFIGURATION	LATCH	CCT 1 LOCATION
93072-4501	NONE	NONE		YES	STANDARD
93072-4502	NONE	CCT 2, 5, 8, 11		YES	STANDARD

13 CIRCUIT					
MOLEX PART NO.	BLOCKED POSITION KEYS	TERMINAL VOID POSITION	CONFIGURATION	LATCH	CCT 1 LOCATION
93072-5001	NONE	NONE		YES	STANDARD
93072-5002	NONE	CCT 4, 6, 8, 10, 12		YES	STANDARD

14 CIRCUIT					
MOLEX PART NO.	BLOCKED POSITION KEYS	TERMINAL VOID POSITION	CONFIGURATION	LATCH	CCT 1 LOCATION
93072-5501	NONE	NONE		YES	STANDARD

15 CIRCUIT					
MOLEX PART NO.	BLOCKED POSITION KEYS	TERMINAL VOID POSITION	CONFIGURATION	LATCH	CCT 1 LOCATION
93072-6001	NONE	NONE		YES	STANDARD
93072-6002	o p	CCT 4, 6, 8, 10, 12, 14		YES	STANDARD
93072-6003	a d g i j n o p	NONE		YES	STANDARD

NOTES:
 1. + DENOTES TERMINAL VOIDED POSITION
 ● DENOTES TERMINAL LOADED POSITION

SEE SHEET 1 SEC. NO. E201-0284 DR. W. NGOLDEN CHKD. APPROVED DATE 2011/10/05	QUALITY SYMBOLS	GENERAL TOLERANCES (UNLESS SPECIFIED)	DIMENSION STYLE	SCALE	DESIGN UNITS	THIRD ANGLE PROJECTION
		mm INCH	MM ONLY	1:1	METRIC	
		4 PLACES ± 0.10 ± 0.05 ± 0.20	DRAWN BY	DATE	TITLE	
		ANGULAR ± 2°	1 TOURISH	2008/03/14	RAST 25 APPLI-MATE RIGHT ANGLE MALE HEADER 2.5 PITCH	
		DRAFT WHERE APPLICABLE MUST REMAIN WITHIN DIMENSIONS	CHECKED BY	DATE	MOLEX INCORPORATED	
			BRITTLE	2008/03/14	SD-93072-001	
			APPROVED BY	DATE	SHEET NO. 4 OF 4	
			BMAGUIRE	2011/10/05	THIS DRAWING CONTAINS INFORMATION THAT IS PROPRIETARY TO MOLEX INCORPORATED AND SHOULD NOT BE USED WITHOUT WRITTEN PERMISSION	