



Excellent Integrated System Limited

Stocking Distributor

Click to view price, real time Inventory, Delivery & Lifecycle Information:

[Amphenol RF](#)
[031-70352](#)

For any questions, you can email us directly:

sales@integrated-circuit.com

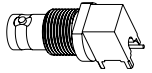
NOTES:

1. MATERIALS AND FINISHES:
 - FRONT BODY - BRASS, NICKEL PLATING (.000100" MIN THICK)
 - REAR CUBE BODY - BRASS, MATTE TIN PLATING (.000100" MIN THICK)
 - FEMALE CONTACT - BERYLLIUM COPPER, GOLD PLATING (.000030" MIN THICK)
 - INSULATOR - PTFE
2. ELECTRICAL:
 - A. IMPEDANCE: 75 OHM
 - B. FREQUENCY RANGE: DC - 1 GHz
 - C. VSWR(RETURN LOSS): 1.12 (25dB), MAX @ DC - 1.5 GHz
 - 1.22 (20dB), MAX @ 1.5 - 3 GHz
 - VSWR PERFORMANCE DEPENDANT UPON PCB LAUNCH CONFIGURATION
 - D. DIELECTRIC WITHSTANDING VOLTAGE: 1000 VRMS
4. PACKAGING:
 - A. QUANTITY: TRAY PACK
 - B. MARKING: TRAY TO BE MARKED "AMPHENOL, 31-70352, AND DATE CODE"

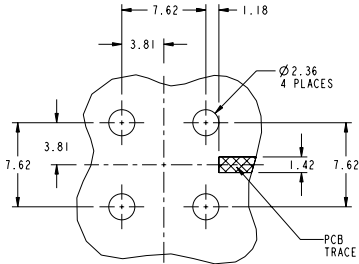
THIRD ANGLE PROJ.

REVISIONS

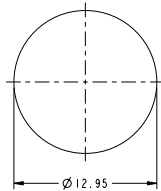
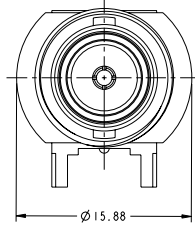
REV	DESCRIPTION	DATE	ECO	APPR
A	RELEASE TO MFG.	11/9/07	46835	SH
B	ADD STAKING TWO PLACES/RD-DMI2050401J7	30-May-12	49112	SH
C	REVISED DESIGN TO MEET 1000 VRMS DWV RD-DMI6050501I1	18-May-16	00801	JTS



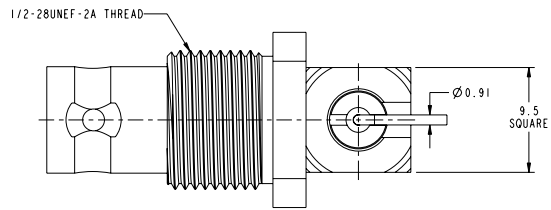
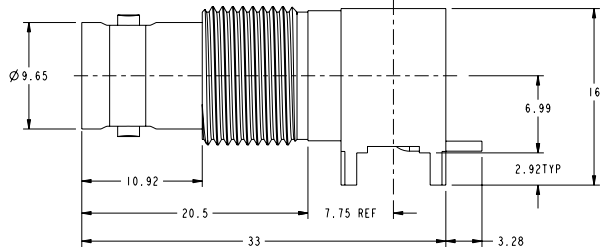
SCALE 1.000



RECOMMENDED PCB FOOTPRINT
SCALE 3.000



RECOMMENDED PANEL HOLE
SCALE 3.000



CUSTOMER OUTLINE DRAWING
ALL OTHER SHEETS ARE FOR INTERNAL USE ONLY

UNLESS OTHERWISE SPECIFIED, DIMENSIONS ARE IN METRIC AND TOLERANCES ARE:
 <0.5mm ±0.05mm 0.5 - 6mm ±0.1mm 6 - 30mm ±0.2mm 30 - 120mm ±0.3mm ANGLES ±1°

NOTICE - These drawings, specifications, or other data (1) are, and remain the property of Amphenol Corp. (2) must be returned upon request; and (3) are confidential and not to be disclosed to any person other than those to whom they are given by Amphenol Corp. The furnishing of these drawings, specifications, or other data by Amphenol Corp., or to any other person to anyone for any purpose is not to be regarded by implication or otherwise in any manner licensing, granting rights to permitting such holder or any other person to manufacture, use or sell any product, process or design, patented or otherwise, that may in any way be related to or disclosed by said drawings, specifications, or other data.

MATERIAL	DRAWN	DATE	TITLE	Amphenol RF Danbury CT USA, Tainan, Taiwan, Shenzhen, China www.amphenolrf.com
	TANGOR	18-May-16		
	ENGINEER	DATE		
REFERENCE	M. HOYACK	31-Oct-07	BNC R/A PCB JACK THRU LEG, SMT CONTACT BULKHEAD	DRAWING NO. 31-70352
	APPROVED	DATE	SCALE: 3.0:1.0 SHEET 2 OF 2	ITEM NO. 31-70352
	S. HSIEH	18-May-16	DWG SIZE B REV C	PART NO. 31-70352
TEKTRONIX PN: 131-8271-00	CAD FILE			
FINISH	1-BNC/31-70352			