



Excellent Integrated System Limited

Stocking Distributor

Click to view price, real time Inventory, Delivery & Lifecycle Information:

[Amphenol RF](#)
[901-10128](#)

For any questions, you can email us directly:

sales@integrated-circuit.com

NOTES:

1. MATERIALS AND FINISHES:

- BODY - BRASS, GOLD PLATED (.000030 MIN.) OVER NICKEL (.000080 MIN.)
- COUPLING NUT - STAINLESS STEEL, PASSIVATED
- CONTACT - BRASS, GOLD PLATED (.000050 MIN.) OVER COPPER (.000020 MIN.)
- RETAINING RING - BERYLLIUM COPPER
- INSULATOR - PTFE
- GASKET - SILICONE RUBBER, COLOR: RED

2. ELECTRICAL:

- A. IMPEDANCE = 50 OHM, NOMINAL
- B. FREQUENCY RANGE = DC - 18.0 GHz
- C. VSWR = 1.050 + (.008 X FREQ.)
- D. D.W.V. = 1,000 VRMS MIN.
- E. INSULATION RESISTANCE = 5,000 VRMS MIN.

3. MECHANICAL:

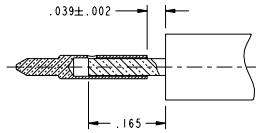
- A. DURABILITY: 500 CYCLES MIN.
- B. TEMPERATURE RANGE: -65° C TO +105° C

4. PACKAGING:

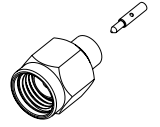
- A. QUANTITY: BULK PACK (50 PER)
- B. CONTACT IS SUPPLIED BULK PACKED (50 PER)
- C. BULK PACK TO BE MARKED: AMPHENOL RF, 901-10128, DATE CODE (YYWW)

901-10128
 DRAWING NO.
 THIRD ANGLE PROJ.

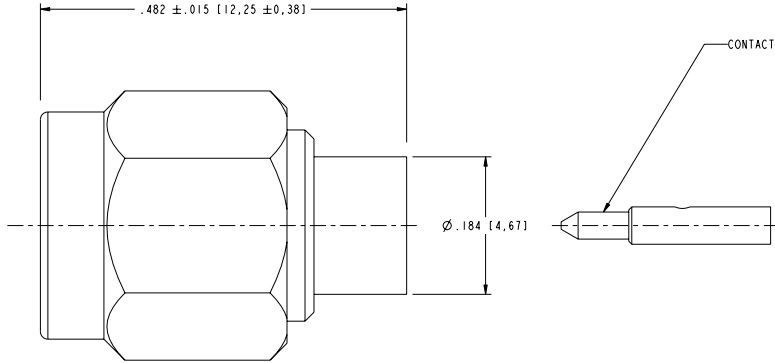
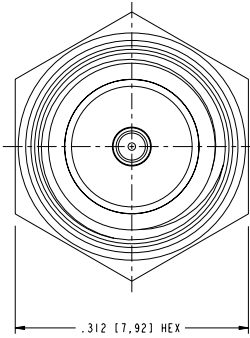
REV.		REVISIONS		
REV.	DESCRIPTION	DATE	ECO	APPR
A	RELEASE TO MFG.	10/24/03	44681	BCG
B	A) INSULATOR WAS SUPPLIED LOOSE		44742	BCG
C	SEE ECO.	2/10/04	44762	KJC
D	CHANGED FROM SINGLE PACK TO BULK PACK	4/29/04	44943	



RECOMMENDED CABLE STRIPPING DIMENSIONS
 SECTION A-A
 SCALE 5.000



SCALE 2.000



CUSTOMER OUTLINE DRAWING

ALL OTHER SHEETS ARE FOR INTERNAL USE ONLY

UNLESS OTHERWISE SPECIFIED, DIMENSIONS ARE IN INCHES AND TOLERANCES ARE:
 2 PLACE DECIMAL ±.015 (0.381 mm) 3 PLACE DECIMAL ±.005 (0.127 mm) ANGLES ± 1°

NOTICE - These drawings, specifications, or other data (1) are, and remain the property of Amphenol Corp. (2) must be returned upon request; and (3) are confidential and not to be disclosed to any person other than those to whom they are given by Amphenol Corp. The furnishing of these drawings, specifications, or other data by Amphenol Corp., or to any other person to anyone for any purpose is not to be regarded by implication or otherwise in any manner licensing, granting rights or permitting such holder or any other person to manufacture, use or sell any product, process or design, patented or otherwise, that may in any way be related to or disclosed by said drawings, specifications, or other data.

MATERIAL

REFERENCE

615X-1844-100
 SIMILAR TO: KJ-SMA1181A1-3GT50G-.141-50
 EAR# 729
 GEN# KJ-SMA1181A1-3GT50G-141-50

DRAWN

B.C. GLEISSNER

ENGINEER

B.C. GLEISSNER

APPROVED

KEN CAPOZZI

CAD FILE

1:\SMA\901-10128

DATE

23-Oct-03

DATE

23-Oct-03

DATE

24-Oct-03

TITLE

SMA PLUG, STRAIGHT,
 DIRECT SOLDER
 FOR .141 SRC

Amphenol RF

Danbury, CT, USA
 Tainan, Taiwan
 Shenzhen, China
 www.amphenolrf.com

SCALE: 8.0:1 SHEET 2 OF 2

CODE ID
 74868

DWG SIZE
 B

DRAWING NO.

901-10128

REV
 D