

Excellent Integrated System Limited

Stocking Distributor

Click to view price, real time Inventory, Delivery & Lifecycle Information:

[Cinch Connectivity Solutions](#)

[PL220-003](#)

For any questions, you can email us directly:

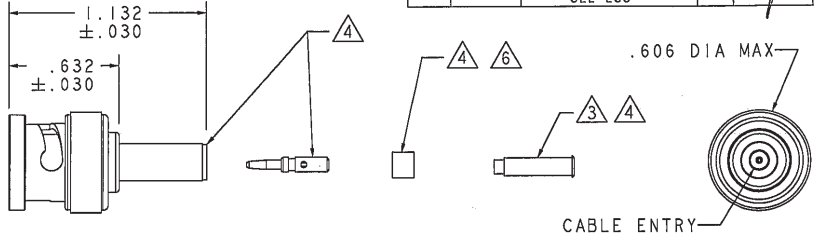
sales@integrated-circuit.com

RED INDICATES ORIGINAL

DASH NO	CABLES ACCOMMODATED	A HEX	ASSEMBLE PER	
-001	RG-178, -196	.178	TAI-A118	
-002	HEWLETT PACKARD 8120-1107	.197		
-003	RG-174, -188, -316	.178		
-004	RG-179, -187			
-005	MIL 17/094			
-006	GC875GPI, GRUMMAN DBL-SHLD RG-188	.197		
-007	275-3991, MICRODOT	.178		
-008	RG-195, -180 421-111, ESSEX			
-009	8218, BELDEN YR23023 BELDEN 21-597, ESSEX			
-010	RG-122			
-011	RG-58; -141; -303 21-537 ESSEX, TCC-50-2	.213	TAI-A118	
-012	RG-55, -142, -223 RG-400			
-013	RG-59	.255		
-013A	TCC-75-2			
-013B	RG-62			
-014	8212, BELDEN			
-015	730A, AT&T	.290		
-015A	RG-71			
-016	724, AT&T 8281, BELDEN	.324		TAI-A118
-017	RG-6	.344		
-018	9268, BELDEN	.255		
-019	8279, BELDEN			
-020	9248, BELDEN	.290		
-021	88240, BELDEN	.213		
-022	88241, 89269, BELDEN	.255		
-023	89108, BELDEN			
-024	89120, BELDEN	.290		
-025	734A, AT&T	.255		
-026	735A, AT&T			
-027	KS19224L2, AT&T	.178		

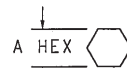
DATA CONTAINED IN THIS DOCUMENT IS PROPRIETARY TO TROMPETER ELECTRONICS INC AND SHALL NOT BE DISCLOSED, COPIED OR USED FOR PROCUREMENT OR MANUFACTURE WITHOUT EXPRESS WRITTEN PERMISSION

REVISIONS			1-0442	SH 1
REV	ECO NO.	DESCRIPTION	DWN	APPROVED
AA	12007	ADDED 8-1613 TO DASH NO'S -009, -024, -026, & -027; SEE ECO		AAH <i>Bun</i> / <i>K</i>



- 8 FOR CABLE GROUP -011 SUPPLY 1 EA ACC011 FOR CABLE GROUP -013, -013A & -013B SUPPLY 1 EA ACC013 MAY BE ASSEMBLED TO CABLE/CONNECTOR ASSY USING 3M SCOTCHGRIP NO 1099 PLASTIC ADHESIVE OR EQUIV
- 7 IF ACCESSORY PLASTIC STRAIN RELIEF REQUIRED ADD SUFFIX "BT" TO MODEL NO (ONLY AVAILABLE WITH CABLE GROUPS -011, -013, -013A, & -013B)
- 6 CONTACT SUPPORT BUSHING REQUIRED ON -0138, -015A & -022 ONLY
- 5. RF COAXIAL BNC FULL CRIMP CABLE PLUG (EQUIV MIL-CAT "D")
- 4 PIN, SLEEVE, CRIMP SLEEVE & CONTACT SUPPORT BUSHING ARE SUPPLIED LOOSE

INCH	MM
.005	0.13
.030	0.76
.178	4.52
.197	5.00
.213	5.41
.255	6.48
.290	7.37
.324	8.23
.344	8.73
.606	15.39
.632	16.05
1.132	28.75



RECOMMENDED HEX CRIMP

- 3 SLEEVE REQUIRED ON -001 THRU -007 ONLY

QTY	DESCRIPTION	PART NUMBER	ITEM
TOL UNLESS SPECIFIED		PL220	
FIN ± .005			
SIZE ± .005			
ANGLE ±			
DWG	AAH 5-7-97	MATERIAL	CODE IDENT 14949
CHK	<i>Bun</i> 5-12-97	DRAWING NO.	1-0442
ENGR		REV	AA
APPR	<i>K</i> 5-13-97	SCALE	2/1
		DATE	2-1-77
		SHEET	1 C

2. FINISH: TFS-1A (TOTAL BUILD-UP .000180-.000450) (NICKEL)
 1. ALL DIM ARE IN INCHES