

Excellent Integrated System Limited

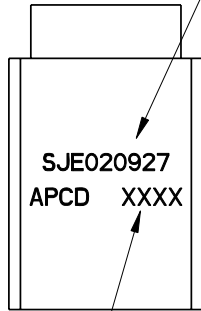
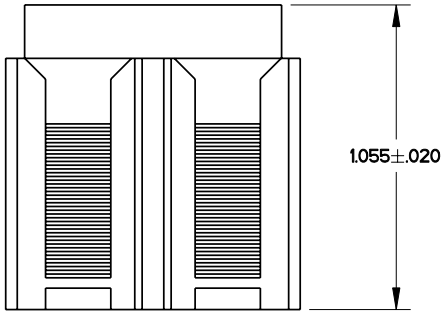
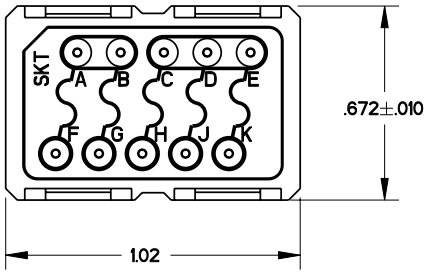
Stocking Distributor

Click to view price, real time Inventory, Delivery & Lifecycle Information:

[Amphenol Pcd](#)
[SJE020927](#)

For any questions, you can email us directly:
sales@integrated-circuit.com

REV	ECN	APP'D
-	5823	



PART MARKING
COLOR: WHITE
.06 HIGH

NOTES:

- MATERIALS:**
 BODY: POLYETHERIMIDE PER MIL-P-46184
 GROMMET: SILICONE BLEND ELASTOMER
 FUSE: 1 AMP, 125 V, QTY 5.
 INTERNAL PIN CONTACTS: COPPER ALLOY, HARD GOLD PLATE PER MIL-G-45204.
- PERFORMANCE SPECIFICATIONS PER MIL-T-81714**
 (SUBJECT TO THE LIMITATIONS OF THE FUSE SPEC.)
 OPERATING TEMP: -65°C TO 200°C
 INSULATION RESISTANCE: 5000 MEGOHMS AT 25°C
 DIELECTRIC WITHSTANDING VOLTAGE:
 1500Vrms AT SEA LEVEL
 200Vrms AT 100,000 FT ALTITUDE
 CURRENT RATING: 7.5A FOR SIZE 20 CONTACTS
 VIBRATION AND SHOCK: MIL-T-81714, PARA. 3.5.8, 3.5.9
- MODULE ACCEPTS M39029/22-192 SOCKET CONTACTS (NOT INCLUDED.)
- MODULE OCCUPIES 2 POSITIONS WHEN INSTALLED IN M81714/67 MOUNTING RAIL.

DIMENSIONS	TOLERANCES	PROJECTION	Amphenol PCD <i>SPECIFICATION DRAWING</i>		TITLE	
ANSI Y14.5M UNITS: INCHES Pro/E FILE	.XX ±0.01 .XXX ±0.005 ANGLES ±10°		ENGR D. LANG 2/1/06		SJE SERIES ELECTRONIC MODULE QTY 5, 1 AMP FUSES	
ORIGINAL	THIS DOCUMENT CONTAINS PROPRIETARY INFORMATION WHICH IS THE CONFIDENTIAL PROPERTY OF AMPHENOL PCD PEABODY, MA, USA	CHKD	SIZE	DWG NO.	REV	
		APPD	A	SJE020927	-	
			CODE: 58982	SCALE: NONE	SHEET 1 OF 1	