

## **Excellent Integrated System Limited**

Stocking Distributor

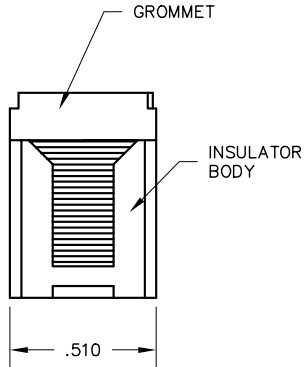
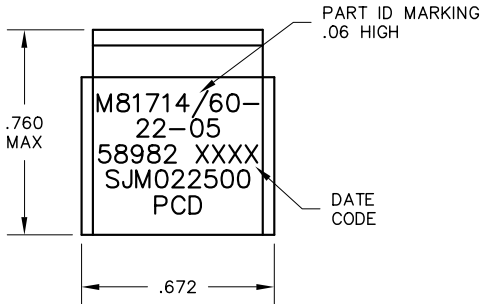
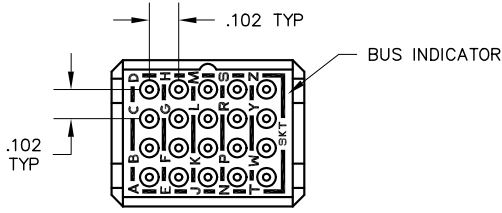
Click to view price, real time Inventory, Delivery & Lifecycle Information:

[Amphenol Pcd](#)  
[SJM022501](#)

For any questions, you can email us directly:

[sales@integrated-circuit.com](mailto:sales@integrated-circuit.com)

REV	ECN	APP'D
H	3963	JC 4/25/00
J	4127	



**NOTES:**

- MATERIALS:**  
 BODY: POLYETHERIMIDE PER MIL-P-46184.  
 GROMMET: SILICONE BLEND ELASTOMER.  
 CONTACT RETAINERS: BERYLLIUM COPPER.  
 INTERNAL PIN CONTACTS: COPPER ALLOY, HARD GOLD PLATE PER MIL-G-45204.
- PERFORMANCE SPECIFICATIONS:**  
 OPERATING TEMP: -65° TO 200°C  
 INSULATION RESISTANCE: 5000 MEGOHMS MIN @ 25°C  
 DIELECTRIC WITHSTANDING VOLTAGE:  
 1500 VRMS AT SEA LEVEL  
 AND 200 VRMS AT 110,000 FT. ALTITUDE.  
 CURRENT RATING: 5 AMPS  
 VIBRATION AND SHOCK: PER MIL-T-81714, PARAGRAPH 3.5.5 AND 3.5.8.
- MODULE SUPPLIED WITH 21 SOCKET CONTACTS PER M39029/22-191 AND TWO (2) MS27488-22 SEALING PLUGS.**

DIMENSIONS ANSI Y14.5M UNITS: INCHES ACAD FILE	TOLERANCES .XX ± .XXX ±.010 ANGLES ±2°	PROJECTION 	<b>SPECIFICATION DRAWING</b>			<i>TITLE</i> SOCKET JUNCTION MODULE SIZE 22 - 5-BUS M81714/60-22-05		
			<i>ENGR</i> A. PATRIE 4/19/00			<i>SIZE</i> A	<i>DWG NO.</i> SJM022500	<i>REV</i> J
ORIGINAL	THIS DOCUMENT CONTAINS PROPRIETARY INFORMATION WHICH IS THE CONFIDENTIAL PROPERTY OF PCD, INC. PEABODY, MA, USA			<i>CHKD</i> J. TON 4/24/00	CODE: 58982		SCALE: 2:1	SHEET 1 OF 1
			<i>APPD</i> J. CAHALY 4/25/00					