

Excellent Integrated System Limited

Stocking Distributor

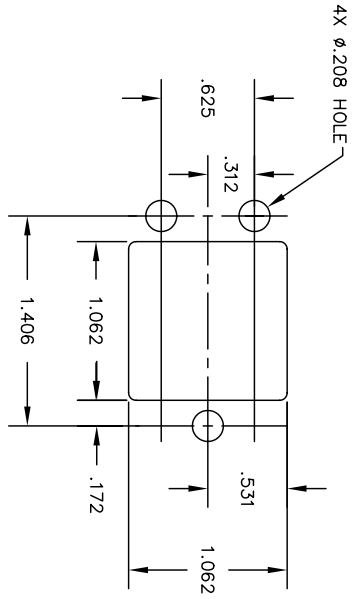
Click to view price, real time Inventory, Delivery & Lifecycle Information:

[Amphenol Pcd](#)
[RSE112064](#)

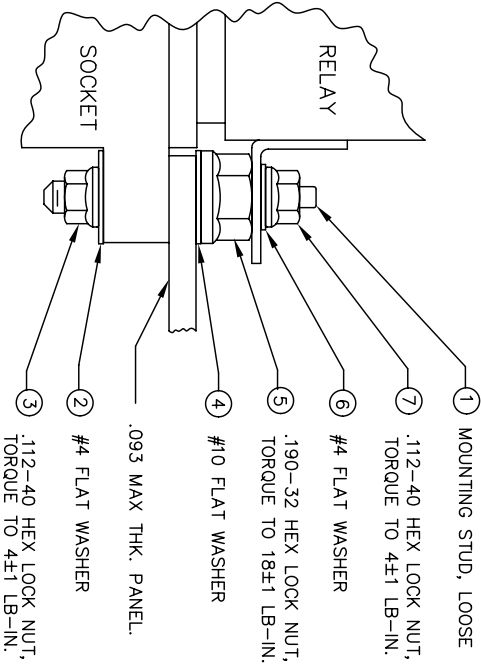
For any questions, you can email us directly:

sales@integrated-circuit.com

RSE112064



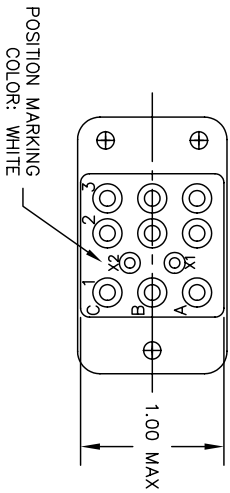
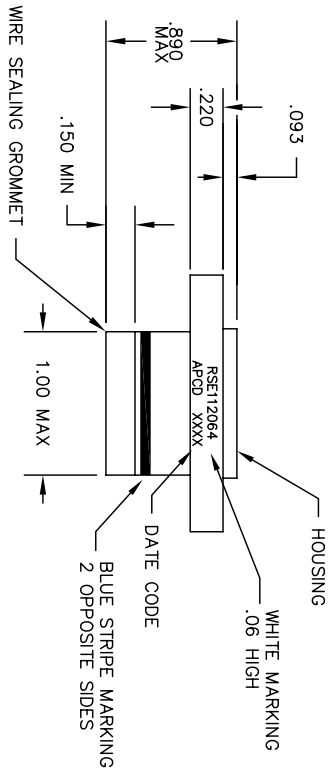
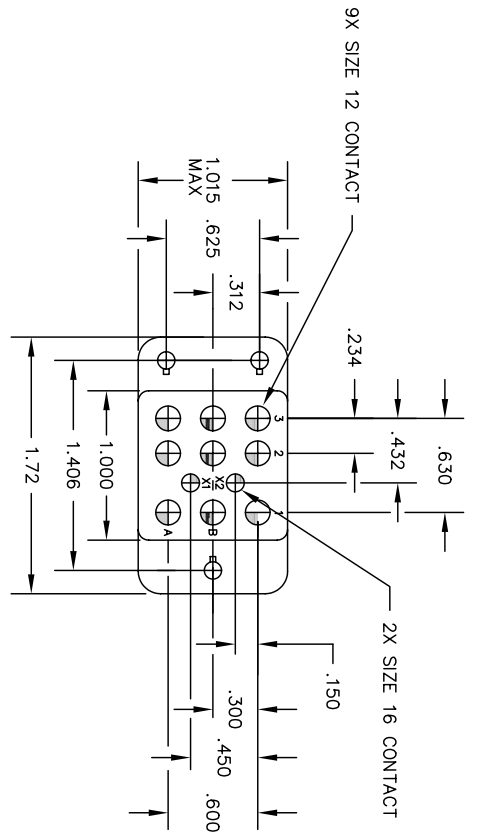
RECOMMENDED MOUNTING PANEL HOLE



MOUNTING HARDWARE

INSTALLATION SEQUENCE BY ITEM NUMBER TYP 4 PLACES

- ① MOUNTING STUD, LOOSE
- ⑦ .112-40 HEX LOCK NUT, TORQUE TO 4±1 LB-IN.
- ⑥ #4 FLAT WASHER
- ⑤ .190-32 HEX LOCK NUT, TORQUE TO 18±1 LB-IN.
- ④ #10 FLAT WASHER
- ③ .093 MAX THK. PANEL.
- ② #4 FLAT WASHER
- ③ 112-40 HEX LOCK NUT, TORQUE TO 4±1 LB-IN.



NOTES:

1. CONFORMS TO PERFORMANCE REQUIREMENTS
2. MATERIALS:
 - A. HOUSING - POLYETHERIMIDE, COLOR: BLACK
 - B. GROMMET - SILICONE ELASTOMER
3. SOCKET CONTACTS CONFORM TO PERFORMANCE OF MIL-C-39029, GOLD OVER NICKEL
4. OPERATING TEMPERATURE: +125°C/-55°C
5. CONTACT INSTALLATION TOOLS:
 - #12 CONTACT CRIMP TOOL: M22520/1-01
 - POSITIONER: M22520/1-01
 - INSERTION/REMOVAL: M81969/14-01

DIMENSIONS	ANSI Y14.5M UNITS: INCHES	TOLERANCES	XX ±.01	PROJECTION	
	ACAD FILE		.XXX ±.005		
ORIGINAL	THIS DOCUMENT CONTAINS PROPRIETARY INFORMATION WHICH IS THE CONFIDENTIAL PROPERTY OF AMPHENOL PCD INC., PEABODY, MA				
	ENGR	R. SWAINE	9/20/05	CHKD	APPD

Amphenol Pcd
SPECIFICATION DRAWING

TITLE	RELAY S
SIZE	SIZE 12
DWG NO.	LOOSE
CODE:	RSE111
58982	1:1

PART NO.	RSE112064
----------	-----------