

Excellent Integrated System Limited

Stocking Distributor

Click to view price, real time Inventory, Delivery & Lifecycle Information:

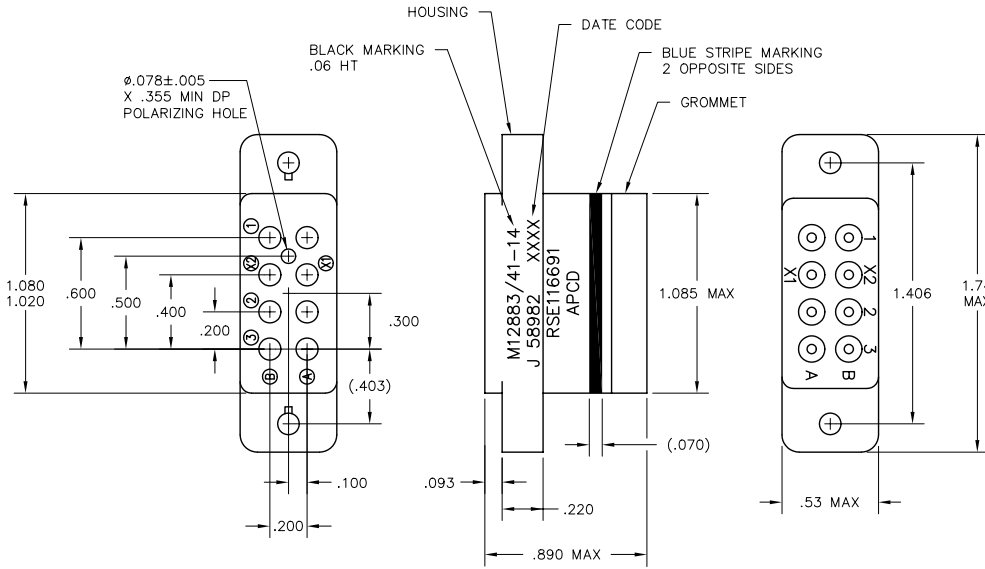
[Amphenol Pcd](#)
[RSE116690](#)

For any questions, you can email us directly:

sales@integrated-circuit.com

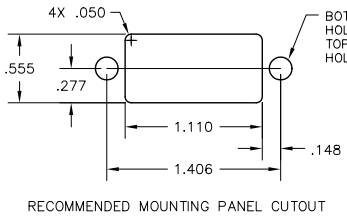
RSE116690

REV	ECN	APP'D
G	5515	JT 9/14/04



- NOTES:
- PART MEETS REQUIREMENTS PER MIL-PRF-12883.
 - MATERIALS:
 - SOCKET BODY: POLYETHERIMIDE PER MIL-P-46184
 - GROMMET: SILICONE RUBBER PER ZZ-R-765
 - HARDWARE: CRES STEEL AND CADMIUM CHROMATE FINISH.
 - CONTACT RETAINERS: BERYLLIUM COPPER
 - SOCKET CONTACTS: COPPER ALLOY, HARD GOLD PLATED PER MIL-G-45204
 - OPERATING RANGE:
 - TEMPERATURE: -65°C TO 125°C
 - INSULATION RESISTANCE: 1000 MEGOHMS MIN.
 - DIELECTRIC WITHSTANDING VOLTAGE:
 - 1500 VRMS AT SEA LEVEL,
 - 500 VRMS AT 80,000 FT. ALTITUDE
 - VIBRATION: MIL-STD-202, METHOD 204, TEST CONDITION G
 - SHOCK: MIL-STD-202, METHOD 213, TEST CONDITION C
 - PART SUPPLIED WITH MOUNTING HARDWARE.
 - PART SUPPLIED WITH CONTACTS PER TABLE BELOW.

PART NO.	CONTACTS SUPPLIED	MARKING
RSE116690	NONE	
RSE116691	8X 16/20 M39029/92-534	RSE116691



DIMENSIONS	TOLERANCES	PROJECTION	Amphenol Pcd	TITLE
ANSI Y14.5M UNITS: INCHES ACAD FILE	.XX ±.01 .XXX ±.005 ANGLES ±2°		Amphenol Pcd SPECIFICATION DRAWING ENGR S. KONDO 9/14/2004	RELAY SOCKET 8 POSITION, SIZE 16 M12883/41-14
ORIGINAL	THIS DOCUMENT CONTAINS PROPRIETARY INFORMATION WHICH IS THE CONFIDENTIAL PROPERTY OF AMPHENOL PCD INC. PEABODY, MA		CHKD D. GANDHI 9/14/2004 APPD J. TON 9/14/2004	SIZE B DWG NO. RSE116690 REV G
				CODE: 58982 SCALE: 2X SHEET 1 OF 1

RSE116690

RSE116690