

Excellent Integrated System Limited

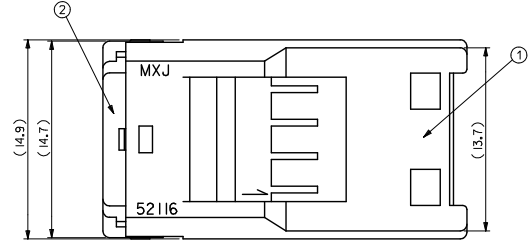
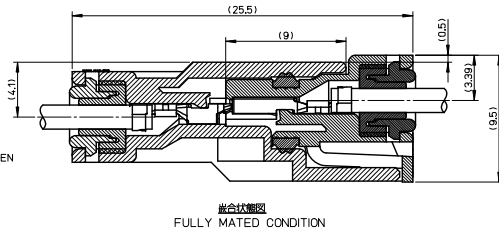
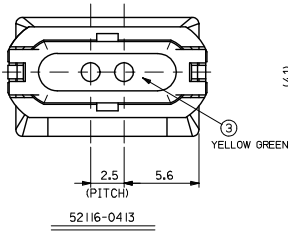
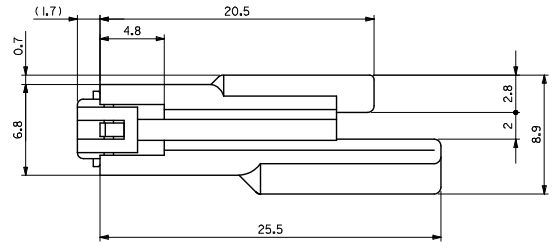
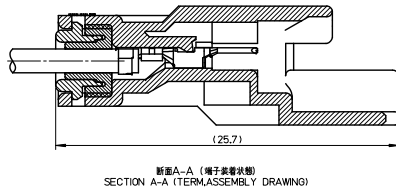
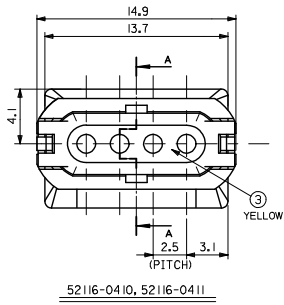
Stocking Distributor

Click to view price, real time Inventory, Delivery & Lifecycle Information:

[Molex Connector Corporation](#)
[0521160411](#)

For any questions, you can email us directly:

sales@integrated-circuit.com



注 記
NOTE

- 適合端子: 50038-8*00
APPLICABLE TERMINAL: 50038-8*00
- 適合相手: 52117-041*
MATES WITH: 52117-041*
- 製品仕様書: PS-52117-008
PRODUCT SPECIFICATION: PS-52117-008
- 取扱説明書: AS-52117-001
APPLICATION SPECIFICATION: AS-52117-001
- ELV及RoHS適合品
ELV AND RoHS COMPLIANT

■ BLACK	52116-0413	2
■ BLACK	52116-0411	4
□ WHITE	52116-0410	4
色 COLOR	MATERIAL NO.	極数 CKT

シリコーン SILICONE	封止材料 SEE DRAWING	ワイヤーエンドシール WIRE END SEAL	③
ポリエステル (15%GF.F.) POLYESTER	封止材料 SEE CHART	キャップ CAP	②
ポリエステル (15%GF.F.) POLYESTER	封止材料 SEE CHART	プラグハウジング PLUG HOUSING	①
材料 MATERIAL	色 COLOR	名称 TITLE	

GENERAL TOLERANCES (UNLESS SPECIFIED)	
10 UNDER	±0.2
10 OVER 30 UNDER	±0.25
30 OVER	±0.3
ANGULAR	±3 °
DRAFT WHERE APPLICABLE MUST REMAIN WITHIN DIMENSIONS	

REVISED	DESCRIPTION
EC NO: JTR2016-003	
DRW: Y.FUSHIMI	2016/04/26
CHK: TAITO	2016/04/26
APP: YAMAMOTO	2016/04/27
D1	

DIMENSION STYLE MM ONLY		SCALE 5:1	DESIGN UNITS METRIC	THIRD ANGLE PROJECTION
DRAWN BY Y. ASHI ZAWA	DATE 1988/07/12	TITLE 2.5 WATERPROOF CONN. PLUG HSG ASSY W/POSITIVE LOCK		
CHECKED BY M. SAKANO	DATE 1994/04/12			
APPROVED BY M. ENOMOTO	DATE 1994/04/12			
MATERIAL NO.		DOCUMENT NO.	SHEET NO.	
SEE CHART		SD-52116-002	1 OF 1	

MATERIAL NO.		DOCUMENT NO.	SHEET NO.	
SEE CHART		SD-52116-002	1 OF 1	
THIS DRAWING CONTAINS INFORMATION THAT IS PROPRIETARY TO MOLEX INCORPORATED AND SHOULD NOT BE USED WITHOUT WRITTEN PERMISSION				