

Excellent Integrated System Limited

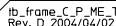
Stocking Distributor

Click to view price, real time Inventory, Delivery & Lifecycle Information:

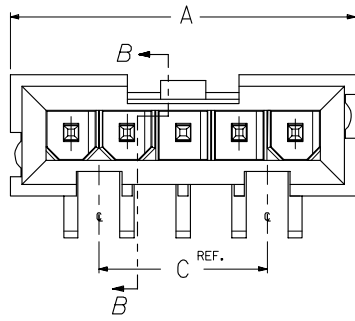
[Molex Connector Corporation](#)
[71233-0005](#)

For any questions, you can email us directly:

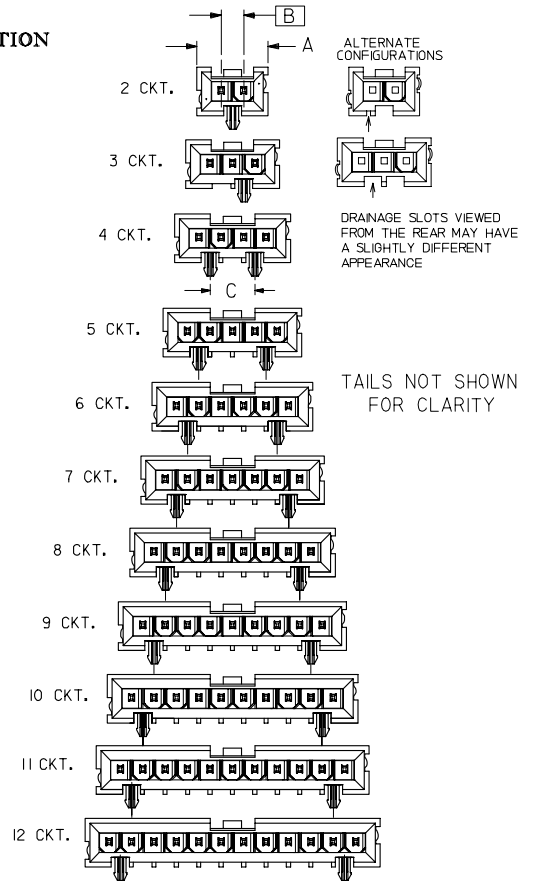
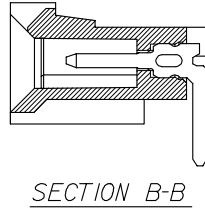
sales@integrated-circuit.com



SEE SHEET 1 FOR ALL OTHER INFORMATION



NO PEG OPTION



OVERALL DIMENSIONS

ASSEMBLIES WITH & WITHOUT PEGS

SIZE	DIM. "A"		DIM. "B"		DIM. "C" REF.	
	INCH	(MM)	INCH	(MM)	INCH	(MM)
2	0.524	(13.31)	0.1654	(4.200)	N/A	N/A
3	0.689	(17.50)	0.3307	(8.400)	N/A	N/A
4	0.855	(21.71)	0.4961	(12.600)	0.330	(8.40)
5	1.020	(25.91)	0.6614	(16.800)	0.496	(12.60)
6	1.185	(30.10)	0.8268	(21.000)	0.661	(16.80)
7	1.351	(34.31)	0.9921	(25.200)	0.826	(21.00)
8	1.516	(38.50)	1.1575	(29.400)	0.992	(25.20)
9	1.682	(42.72)	1.3228	(33.600)	1.157	(29.40)
10	1.847	(46.91)	1.4882	(37.800)	1.322	(33.60)
11	2.012	(51.10)	1.6535	(42.000)	1.488	(37.80)
12	2.177	(55.30)	1.8189	(46.200)	1.653	(42.00)

SHOW ALT. CFG. HSGS. EC NO: UCF2007-0516 DRAWN BY: DRWINBARKER CHKD BY: CHKDJORGAN APPR: SMILLER DATE: 2006/09/07 2006/09/08 2006/09/12 M REV	QUALITY SYMBOLS ▽=0 ▽=0	GENERAL TOLERANCES (UNLESS SPECIFIED)		DIMENSION STYLE IN/MM		SCALE ---		DESIGN UNITS INCH		THIRD ANGLE PROJECTION		
		mm		INCH		DRAWN BY		DATE		TITLE		
		4 PLACES ±.000 ±.000		RWB		8/2/93		SINGLE ROW RIGHT ANGLE THRU HOLE MINIFIT HEADER ASSEMBLY MOLEX INCORPORATED				
		3 PLACES ±.000 ±.010		CHECKED BY		DATE						
		2 PLACES ±.025 ±.015		PAR		8/2/93						
		1 PLACE ±.038 ±.015		APPROVED BY		DATE						
		ANGULAR ±1/2°		FAH		8/2/93		MATERIAL NO.		DOCUMENT NO.		
		DRAFT WHERE APPLICABLE MUST REMAIN WITHIN DIMENSIONS		SEE TABLES		SDA-71233-****		SHEET NO.				
		SIZE C		THIS DRAWING CONTAINS INFORMATION THAT IS PROPRIETARY TO MOLEX INCORPORATED AND SHOULD NOT BE USED WITHOUT WRITTEN PERMISSION				2 OF 4				

HOUSINGS WITH PEGS

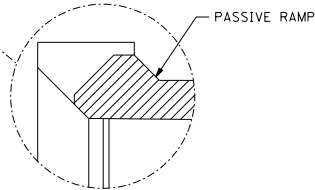
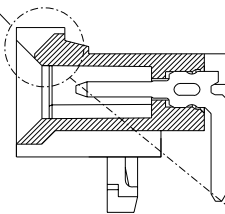
SIZE	STAT	ASSEMBLY ITEM NUMBER	PLATING SEE NOTE 4
2		71233-0001	TIN OVERALL
3		71233-0003	
4		71233-0005	
5		71233-0007	
6		71233-0009	
7		71233-0011	
8		71233-0013	
9		71233-0015	
10		71233-0017	
11		71233-0019	
12		71233-0021	
2		71233-0101	30 GOLD
3		71233-0103	
4		71233-0105	
5		71233-0107	
6		71233-0109	
7		71233-0111	
8		71233-0113	
9		71233-0115	
10		71233-0117	
11		71233-0119	
12		71233-0121	

(POSITIVE LOCK, TRAY PACK)

SIZE	STAT	ASSEMBLY ITEM NUMBER	PLATING SEE NOTE 4
2		71233-0002	TIN OVERALL
3		71233-0004	
4		71233-0006	
5		71233-0008	
6		71233-0010	
7		71233-0012	
8		71233-0014	
9		71233-0016	
10		71233-0018	
11		71233-0020	
12		71233-0022	
2		71233-0102	30 GOLD
3		71233-0104	
4		71233-0106	
5		71233-0108	
6		71233-0110	
7		71233-0112	
8		71233-0114	
9		71233-0116	
10		71233-0118	
11		71233-0120	
12		71233-0122	

(PASSIVE LOCK, TRAY PACK)

POSITIVE LOCK VERSION SHOWN



PASSIVE RAMP

HOUSINGS WITHOUT PEGS

SIZE	STAT	ASSEMBLY ITEM NUMBER	PLATING SEE NOTE 4
2		71233-0201	TIN OVERALL
3		71233-0203	
4		71233-0205	
5		71233-0207	
6		71233-0209	
7		71233-0211	
8		71233-0213	
9		71233-0215	
10		71233-0217	
11		71233-0219	
12		71233-0221	
2		71233-0301	30 GOLD
3		71233-0303	
4		71233-0305	
5		71233-0307	
6		71233-0309	
7		71233-0311	
8		71233-0313	
9		71233-0315	
10		71233-0317	
11		71233-0319	
12		71233-0321	

(POSITIVE LOCK, TRAY PACK)

SIZE	STAT	ASSEMBLY ITEM NUMBER	PLATING SEE NOTE 4
2		71233-0202	TIN OVERALL
3		71233-0204	
4		71233-0206	
5		71233-0208	
6		71233-0210	
7		71233-0212	
8		71233-0214	
9		71233-0216	
10		71233-0218	
11		71233-0220	
12		71233-0222	
2		71233-0302	30 GOLD
3		71233-0304	
4		71233-0306	
5		71233-0308	
6		71233-0310	
7		71233-0312	
8		71233-0314	
9		71233-0316	
10		71233-0318	
11		71233-0320	
12		71233-0322	

(PASSIVE LOCK, TRAY PACK)

L		SEE SHEET I	DIMENSIONS SHOWN (METRIC) INCH		REVISE ONLY ON CAD SYSTEM	
I		SEE SHEET I	UNLESS OTHERWISE SPECIFIED TOLERANCES ARE: ANGULAR ± 1°		TITLE	
G		SEE SHEET I	INCH METRIC		SINGLE ROW MINI-FIT HEADER	
F		SEE SHEET I	± .005 ± .01		RIGHT ANGLE, BLIND MATE, THRU-HOLE SALES ASSEMBLY	
E		SEE SHEET I	± .01 ± .013		MOLEX INCORPORATED	
C		SEE SHEET I	± .025 ± .025		MOLEX INCORPORATED	
A		SEE SHEET I	DRAFT: WHEN APPLICABLE, MUST REMAIN WITHIN DIMENSIONS		PART NO. SDA-71233-***	
LTR.		REVISIONS	DRAWN: RWB CHECKED: PAR		DATE 08/02/93	
			APP'D: FAH SCALE: 1:1		SHEET NO. 3	

13 12 11 10 9 8 7 6 5 4 3 2 1